

UNITED STATES  
DEPARTMENT OF THE INTERIOR  
BUREAU OF LAND MANAGEMENT

APPLICATION FOR PERMIT TO DRILL, DEEPEN, OR PLUG BACK

1a. TYPE OF WORK

DRILL ☒

DEEPEN ☐

PLUG BACK ☐

b. TYPE OF WELL

OIL  
WELL ☒

GAS  
WELL ☐

OTHER

SINGLE  
ZONE ☒

MULTIPLE  
ZONE ☐

2. NAME OF OPERATOR

CANTRO EXPLORATION, INC.

(Bob Green)

(512-826-2981)

3. ADDRESS OF OPERATOR

909 N.E. Loop 410 (Suite 711), San Antonio, Texas 78209

4. LOCATION OF WELL (Report location clearly and in accordance with any State requirements.)

At surface

430' FSL & 390' FEL of Section

At proposed prod. zone  
same

(Unit P)

(SE 1/4 SE 1/4)

14. DISTANCE IN MILES AND DIRECTION FROM NEAREST TOWN OR POST OFFICE

14 air miles south-southeast of Lordsburg, NM

15. DISTANCE FROM PROPOSED\*

LOCATION TO NEAREST  
PROPERTY OR LEASE LINE, FT.  
(Also to nearest drlg. unit line, if any)

390'

(390')

16. NO. OF ACRES IN LEASE

320

17. NO. OF ACRES ASSIGNED  
TO THIS WELL

40

18. DISTANCE FROM PROPOSED LOCATION\*

TO NEAREST WELL, DRILLING, COMPLETED,  
OR APPLIED FOR, ON THIS LEASE, FT.

660'

19. PROPOSED DEPTH

2500'

20. ROTARY OR CABLE TOOLS

Cable

21. ELEVATIONS (Show whether DF, RT, GR, etc.)

3481' G.L.

22. APPROX. DATE WORK WILL START\*

January 15, 1986

23.

PROPOSED CASING AND CEMENTING PROGRAM

SIZE OF HOLE	SIZE OF CASING	WEIGHT PER FOOT	SETTING DEPTH	QUANTITY OF CEMENT
12 1/4"	8 5/8"	23#	300'	Circulate to surface
7 7/8"	5 1/2"	14#	2500'	Circulate back into 8 5/8" csg.

Pay zone will be selectively perforated and stimulated as needed for optimum production.

Attached are: 1. Well Location & Acreage Dedication Plat  
2. Supplemental Drilling Data  
3. Surface Use Plan

Operator's Authority: Designation of Operator from Hanson Oil Corporation,  
record lessee is on file at BLM, Carlsbad, NM.

Bond Coverage: Lessee's \$150,000 nationwide bond.

IN ABOVE SPACE DESCRIBE PROPOSED PROGRAM: If proposal is to deepen or plug back, give data on present productive zone and proposed new productive zone. If proposal is to drill or deepen directionally, give pertinent data on subsurface locations and measured and true vertical depths. Give blowout preventer program, if any.

24.

SIGNED

*James A. Knaut*  
James A. Knaut

TITLE

Agent

DATE

Jan. 6, 1986

(This space for Federal or State office use)

PERMIT NO.

APPROVAL DATE

APPROVED BY

TITLE

DATE

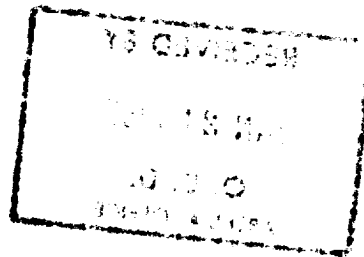
1-23-86

CONDITIONS OF APPROVAL, IF ANY:

APPROVAL SUBJECT TO  
GENERAL REQUIREMENTS AND  
SPECIAL STIPULATIONS

\*See Instructions On Reverse Side

Title 18 U.S.C. Section 1001, makes it a crime for any person knowingly and willfully to make to any department or agency of the United States any false, fictitious or fraudulent statements or representations as to any matter within its jurisdiction.



**NEW MEXICO OIL CONSERVATION COMMISSION  
WELL LOCATION AND ACREAGE DEDICATION PLAT**

Form 100  
Supp. 100-18  
Effective 1-1-86

All distances must be from the outer boundaries of the Section.

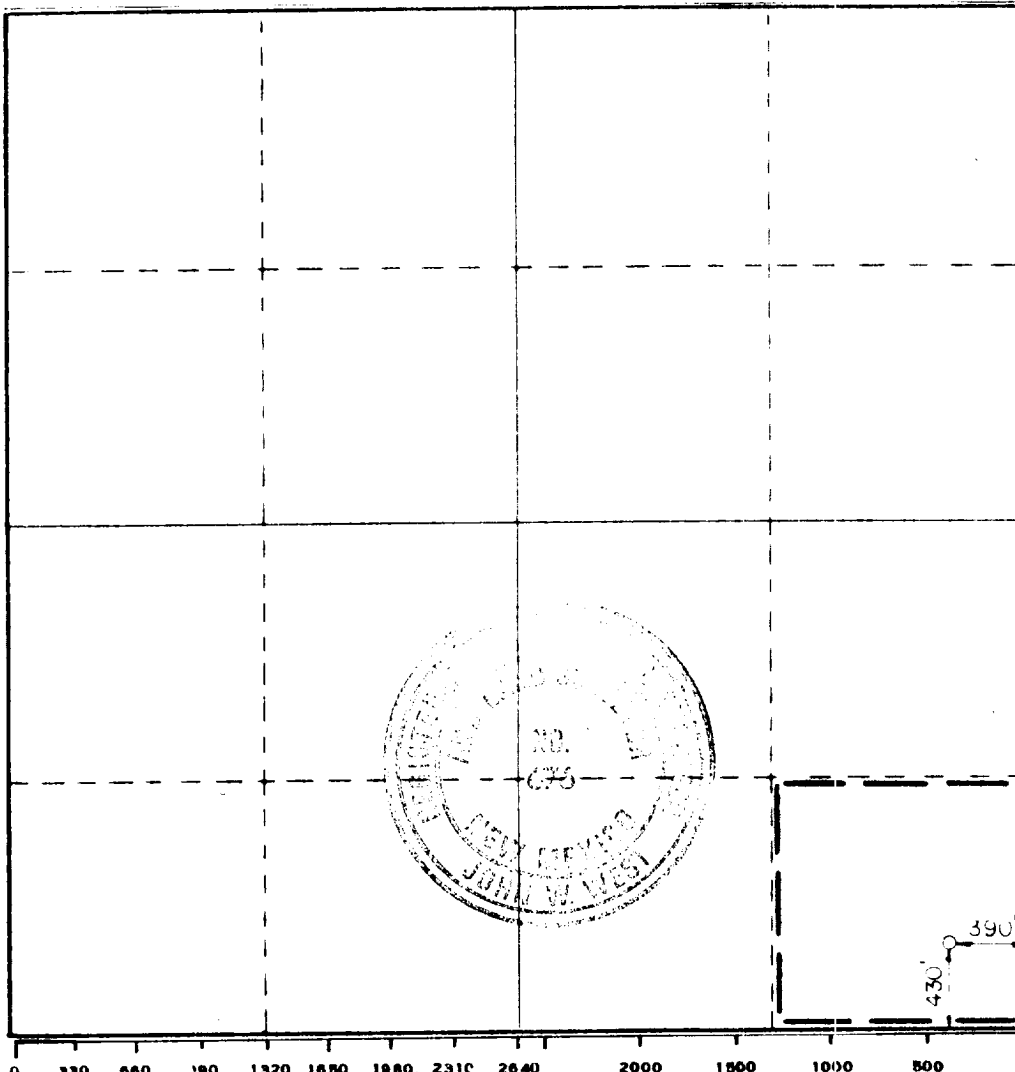
Operator <b>CANTRO EXPLORATION, INC.</b>			Lease <b>HANSON FEDERAL</b>		Well No. <b>2</b>
Unit Letter <b>P</b>	Section <b>20</b>	Township <b>19S</b>	Range <b>31E</b>	County <b>Eddy</b>	
Actual Footage Location of Well: <b>430</b> feet from the <b>South</b> line and <b>390</b> feet from the <b>East</b> line					
Ground Level Elev. <b>3481.4'</b>	Producing Formation <b>Yates, Seven Rivers</b>		Pool <b>North Hackberry</b>	Dedicated Acreage: <b>40</b> Acres	

1. Outline the acreage dedicated to the subject well by colored pencil or hachure marks on the plat below.
2. If more than one lease is dedicated to the well, outline each and identify the ownership thereof (both as to working interest and royalty).
3. If more than one lease of different ownership is dedicated to the well, have the interests of all owners been consolidated by communitization, unitization, force-pooling, etc?

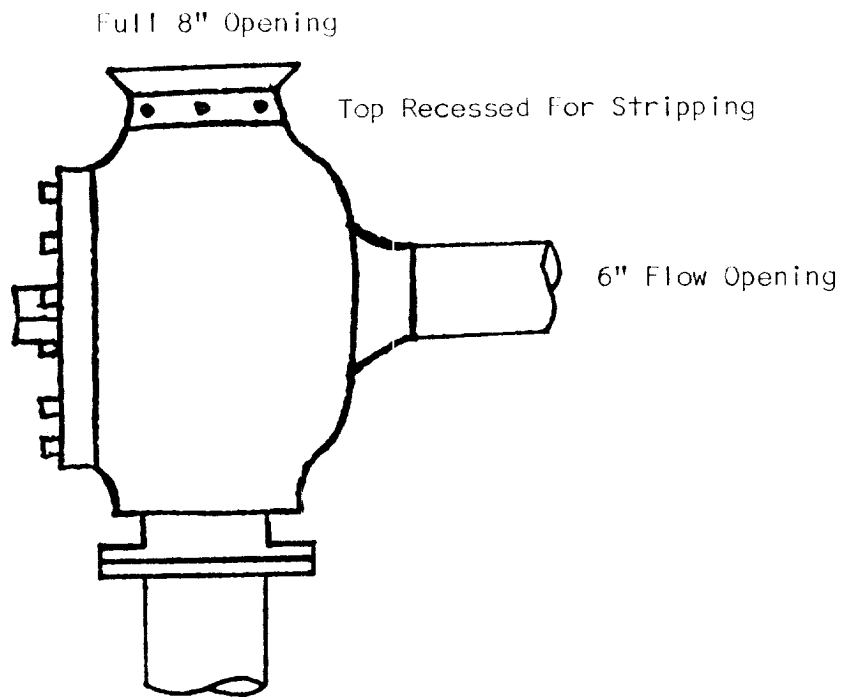
☐ Yes    ☐ No    If answer is "yes," type of consolidation \_\_\_\_\_

If answer is "no," list the owners and tract descriptions which have actually been consolidated. (Use reverse side of this form if necessary.) \_\_\_\_\_

No allowable will be assigned to the well until all interests have been consolidated (by communitization, unitization, forced-pooling, or otherwise) or until a non-standard unit, eliminating such interests, has been approved by the Commission.



## CABLE TOOL MASTER VALVE



Working Pressure -  $\pm$  500 psi

Master Valve can be closed to shut off flow from well bore. It can be operated to close top and open flow side. Recessed top opening can be used for stripping.

BLOWOUT PREVENTER SKETCH

Cantro Exploration, Inc.

Well #2 Hanson Federal

430' /S & 390' /E Sec. 20-19S-31E

## SUPPLEMENTAL DRILLING DATA

CANTRO EXPLORATION, INC.  
WELL #2 HANSON FEDERAL  
430'/S & 390'/E SEC. 20-19S-31E  
EDDY COUNTY, NEW MEXICO

1. SURFACE FORMATION: Sandy soils of Quaternary Age.

2. ESTIMATED TOPS OF GEOLOGIC MARKERS (Ground Elevation 3481'):

Salt	670'	Yates	2140'
Tansill	1950'	Seven Rivers	2360'

3. ANTICIPATED POROSITY ZONES:

Water - Above 200'  
Oil - Yates  
Oil - Capitan Reef

4. CASING DESIGN:

<u>Size</u>	<u>Interval</u>	<u>Weight</u>	<u>Grade</u>	<u>Joint</u>
8 5/8"	0 - 300'	23#	K-55	STC
5 1/2"	0 - 2500'	14#	K-55	STC

5. PRESSURE CONTROL EQUIPMENT: A pressure control valve will be used.

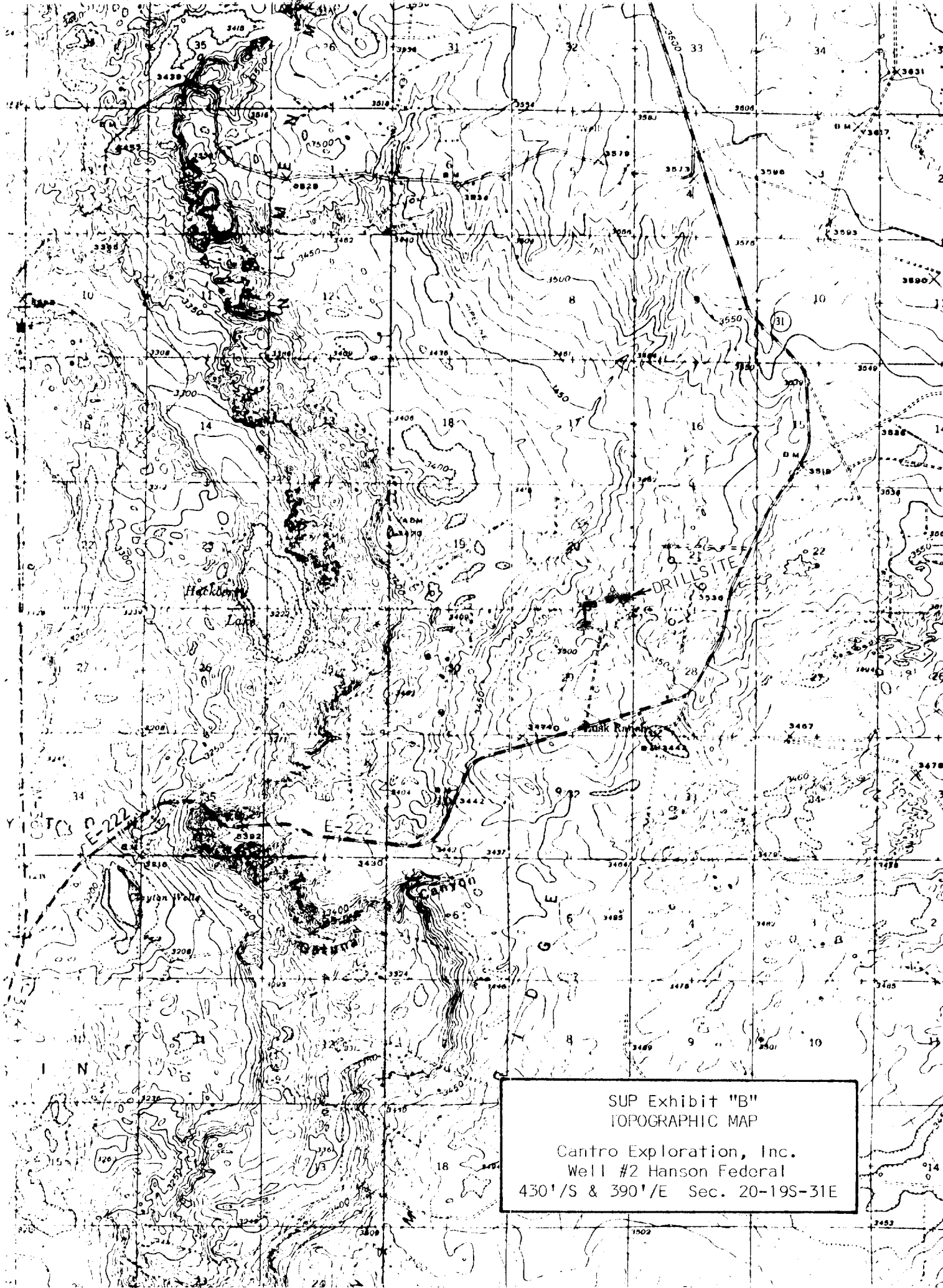
6. CIRCULATING MEDIUM: Not applicable for cable tool hole.

7. AUXILIARY EQUIPMENT: Not applicable.

8. TESTING & LOGGING PROGRAM: Formation tests will be made as warranted by bailing hole down and measuring the fluid entry rate. Electric logs will include a Gamma Ray/Neutron log.

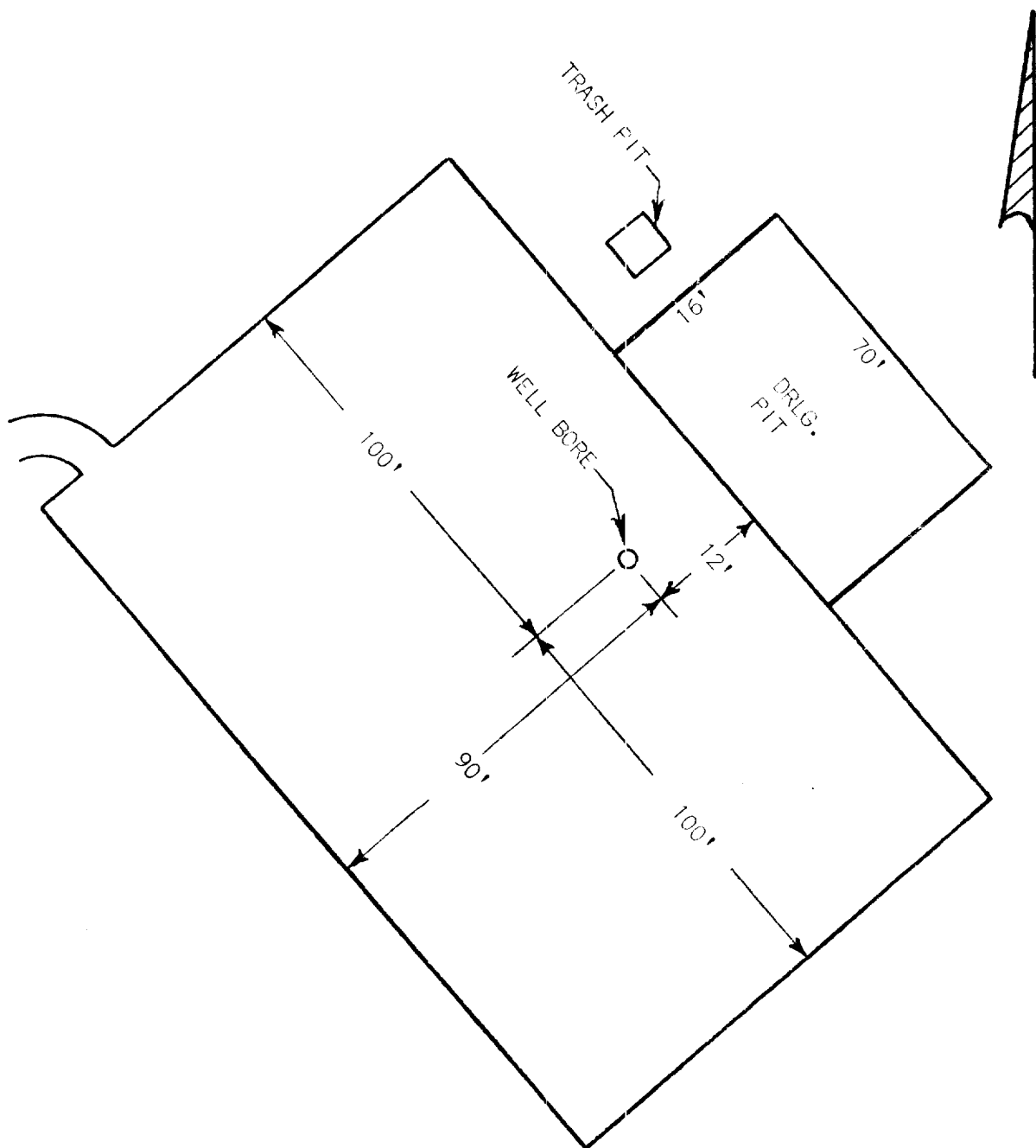
9. ABNORMAL PRESSURES, TEMPERATURES OR GAS: None anticipated.

10. ANTICIPATED STARTING DATE: It is planned that drilling operations will commence about January 15, 1986. Duration of drilling, testing, and completion operations should be two to six weeks.



SUP Exhibit "B"  
TOPOGRAPHIC MAP  
Cantro Exploration, Inc.  
Well #2 Hanson Federal  
430' S & 390' E Sec. 20-19S-31E

# CABLE TOOL DRILL PAD



SUP Exhibit "D"  
SKETCH OF WELL PAD

Cantro Exploration, Inc.  
Well #2 Hanson Federal  
430' /S & 390' /E Sec. 20-19S-31E