

UNITED STATES  
DEPARTMENT OF THE INTERIOR  
BUREAU OF LAND MANAGEMENT

SUBMIT IN TRIPLICATE  
(Other instructions on  
reverse side)

Form approved.  
Budget Bureau No. 1004-0136  
Expires August 31, 1985

30-015-2572/

C/SF

APPLICATION FOR PERMIT TO DRILL, DEEPEN, OR PLUG BACK

1a. TYPE OF WORK

DRILL ☒

DEEPEN ☐

PLUG BACK ☐

b. TYPE OF WELL

OIL  
WELL ☒

GAS  
WELL ☐

OTHER

2. NAME OF OPERATOR

Harvey E. Yates Company

3. ADDRESS OF OPERATOR

P.O. Box 1933 - Roswell, New Mexico 88201

4. LOCATION OF WELL (Report location clearly and in accordance with any State requirements.)

At surface  
2310' FSL & 2310' FWL

At proposed prod. zone

2310' FSL & 2310' FWL

14. DISTANCE IN MILES AND DIRECTION FROM NEAREST TOWN OR POST OFFICE\*

12 miles southeast of Loco Hills

15. DISTANCE FROM PROPOSED\*

LOCATION TO NEAREST  
PROPERTY OR LEASE LINE, FT.  
(Also to nearest drlg. unit line, if any)

330

16. NO. OF ACRES IN LEASE

240

17. NO. OF ACRES ASSIGNED  
TO THIS WELL

40

18. DISTANCE FROM PROPOSED LOCATION\*  
TO NEAREST WELL, DRILLING, COMPLETED,  
OR APPLIED FOR, ON THIS LEASE, FT.

467

19. PROPOSED DEPTH

9500'

20. ROTARY OR CABLE TOOLS

N/A

21. ELEVATIONS (Show whether DF, RT, GR, etc.)

GL 3764.6

22. APPROX. DATE WORK WILL START\*

As soon as possible

23.

PROPOSED CASING AND CEMENTING PROGRAM

SIZE OF HOLE	SIZE OF CASING	WEIGHT PER FOOT	SETTING DEPTH	QUANTITY OF CEMENT
17 1/2	13 3/8	54.5	300 500 550	Circl. to surface
11	8 5/8	24	2400	Circl. to surface
7 7/8	5 1/2	17	9500	600' above pay

Mud Program:

0-300 FW spud mud  
300-2400 Brine water  
2400-9500 FW mud

IN ABOVE SPACE DESCRIBE PROPOSED PROGRAM: If proposal is to deepen or plug back, give data on present productive zone and proposed new productive zone. If proposal is to drill or deepen directionally, give pertinent data on subsurface locations and measured and true vertical depths. Give blowout preventer program, if any.

24.

SIGNED

N.M. Young

TITLE

Drilling Superintendent

DATE

1-8-87

(This space for Federal or State office use)

PERMIT NO.

APPROVAL DATE

APPROVED BY

TITLE

CARLEBAD RESOURCE AREA

DATE

1-16-87

CONDITIONS OF APPROVAL, IF ANY:

APPROVAL SUBJECT TO  
GENERAL REQUIREMENTS AND  
SPECIAL STIPULATIONS

\*See Instructions On Reverse Side

Title 18 U.S.C. Section 1001, makes it a crime for any person knowingly and willfully to make to any department or agency of the United States any false, fictitious or fraudulent statements or representations as to any matter within its jurisdiction.

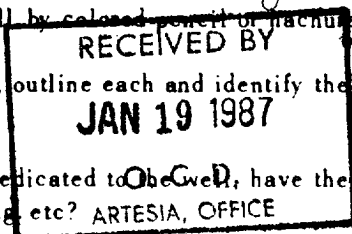
NEW MEXICO OIL CONSERVATION COMMISSION  
WELL LOCATION AND ACREAGE DEDICATION PLAT

Form C-102  
Supersedes C-128  
Effective 1-1-65

All distances must be from the outer boundaries of the Section

Operator Harvey E. Yates Company			Lease Taylor Deep 12 Fed.			Well No. #1		
Unit Letter K	Section 12	Township 18 South	Range 31 East	County Eddy				
Actual Footage Location of Well:								
2310 feet from the South line and			2310 feet from the West line					
Ground Level Elev. 3764.6	Producing Formation Wolfcamp		Pool Wildcat Wolfcamp			Dedicated Acreage: 40 Acres		

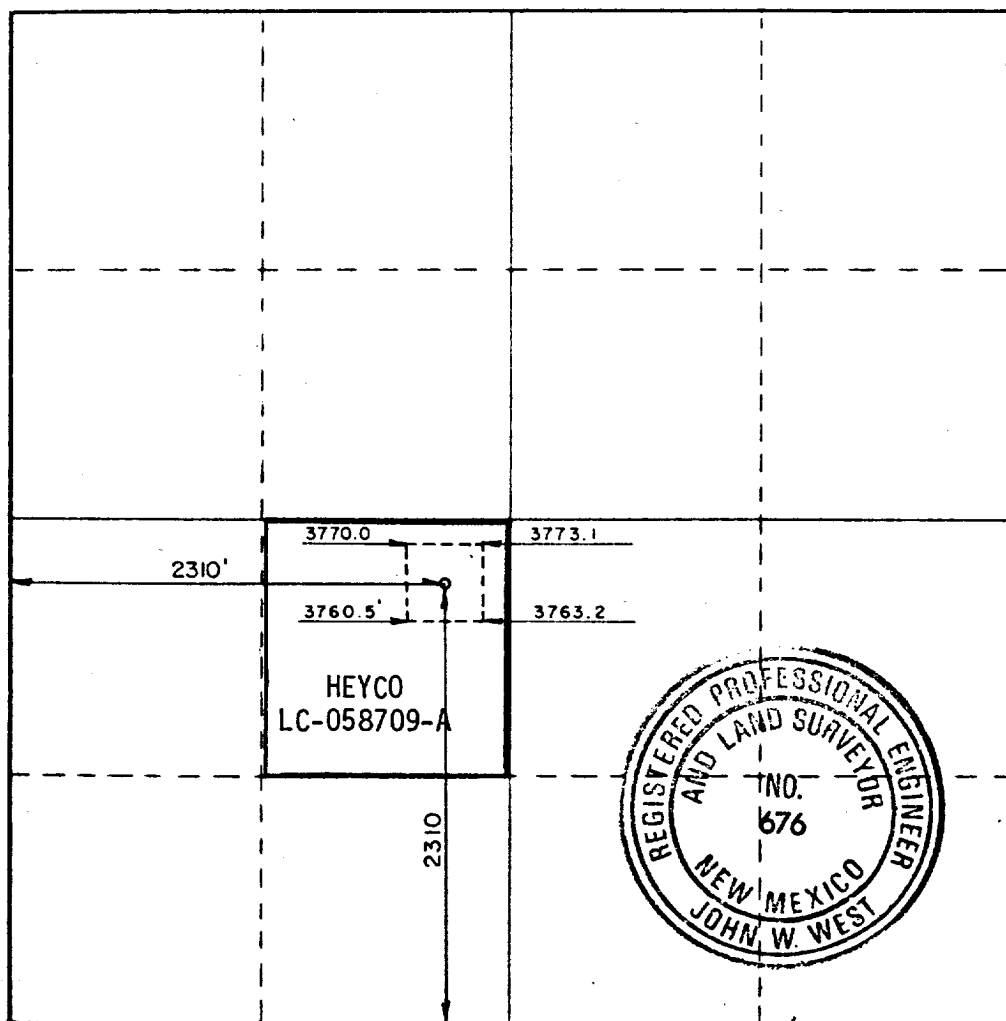
1. Outline the acreage dedicated to the subject well by colored pencil or machine marks on the plat below.
2. If more than one lease is dedicated to the well, outline each and identify the ownership thereof (both as to working interest and royalty).
3. If more than one lease of different ownership is dedicated to the well, have the interests of all owners been consolidated by communitization, unitization, force-pooling, etc? **ARTESIA, OFFICE**



☐ Yes ☐ No If answer is "yes," type of consolidation \_\_\_\_\_

If answer is "no," list the owners and tract descriptions which have actually been consolidated. (Use reverse side of this form if necessary.) \_\_\_\_\_

No allowable will be assigned to the well until all interests have been consolidated (by communitization, unitization, forced-pooling, or otherwise) or until a non-standard unit, eliminating such interests, has been approved by the Commission.



CERTIFICATION

I hereby certify that the information contained herein is true and complete to the best of my knowledge and belief.

*N.M. Young*  
Name  
N.M. Young

Position  
Drilling Superintendent

Company  
Harvey E. Yates Company

Date  
January 8, 1987

I hereby certify that the well location shown on this plat was plotted from field notes of actual surveys made by me or under my supervision, and that the same is true and correct to the best of my knowledge and belief.

Date Surveyed  
December 29, 1986

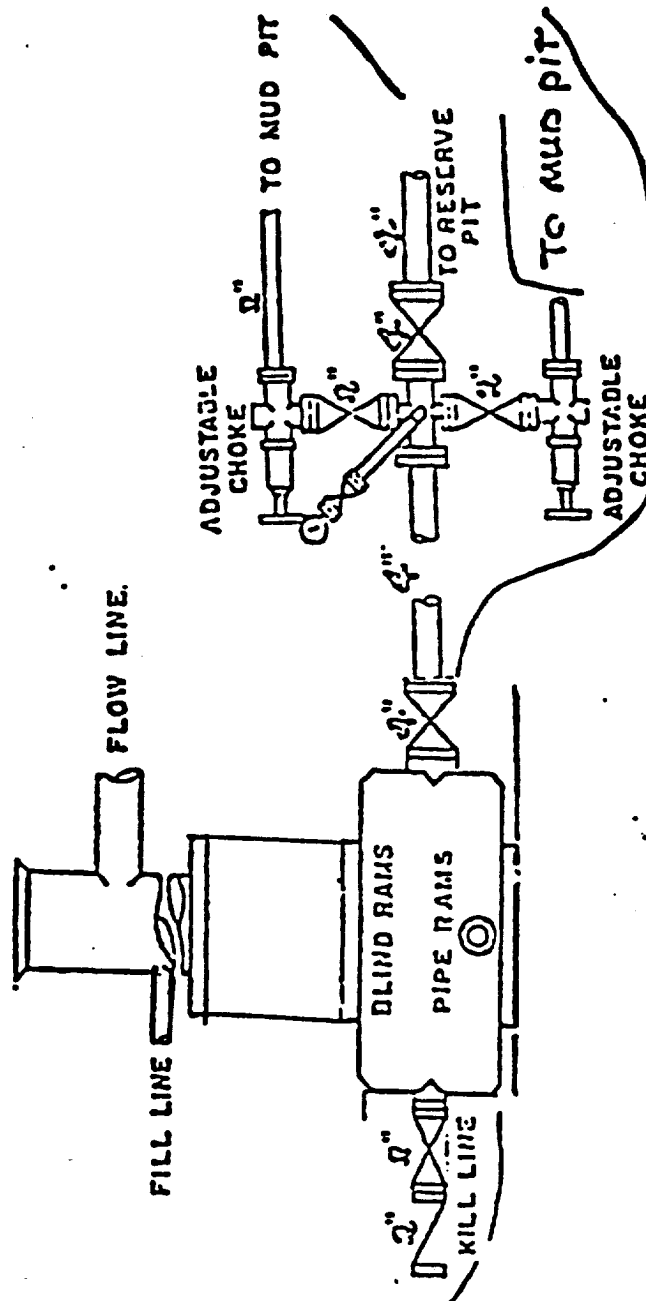
Registered Professional Engineer and/or Land Surveyor

*John W. West*

Certificate No. JOHN W. WEST, 676  
RONALD J. EIDSON, 3239

EXHIBIT C

Harvey E. Yates Co.  
Taylor Deep 12 Federal 1  
Eddy Co., New Mexico



900 SERIES

APPLICATION FOR DRILLING

HARVEY E. YATES COMPANY  
Taylor Deep 12 Federal 1  
Sec. 12, T-18S, R-31E  
Eddy County, New Mexico

In conjunction with Form 9-331C, Application for Permit to Drill the Subject well in Section 12, Township 18 South, Range 31 East, Eddy County, New Mexico, Harvey E. Yates Company submits the following ten items of pertinent information in accordance with Bureau of Land Management requirements:

1. The geologic surface formation is quaternary alluvium and bolson deposits and other surficial deposits.
2. The estimated tops of geologic markers are as follows:

Rustler	891'	Yates "A"	2400'
Yates	2371'	Bowers	3261'
7 Rivers	2801'	Penrose	3732'
Queen	3501'	San Andres	4381'
Grayburg	4031'	Wolfcamp	9350'
Delaware	5081'	TD	9500'
Bone Springs	5806'		
3. We do not anticipate finding water but have listed the formation in which we anticipate finding oil or gas.

Bone Springs	5806'
--------------	-------
4. Proposed casing program: See Form 3160-3
5. Pressure control equipment: See Exhibit C.
6. Mud program: See Form 3160-3.
7. Auxiliary equipment: Blowout preventer
8. Testing, logging and coring programs:  
We do not plan to core or DST. The planned logs are CND w/ GR and caliper; DLL-MSFL.
9. No abnormal pressures or temperatures are anticipated.
10. Anticipated starting date: As soon as possible.

EXHIBIT A

Harvey E. Yates Co.  
Taylor Deep 12 Federal 1  
Eddy Co., New Mexico

Map showing the location of the Harvey E. Yates Taylor Deep 12 Federal Well No. 1 and Access Road, T18S, R31E, Section 12, Centre, NE/4NE/4SW/4 [2310 FSL, 2310 FWL], - Eddy County, New Mexico. Open square shows location of well pad; solid line shows location of access road. U.S.G.S. 7.5 minute series, MALJAMAR, NEW MEXICO, 1985. ASC Project: 87-1.

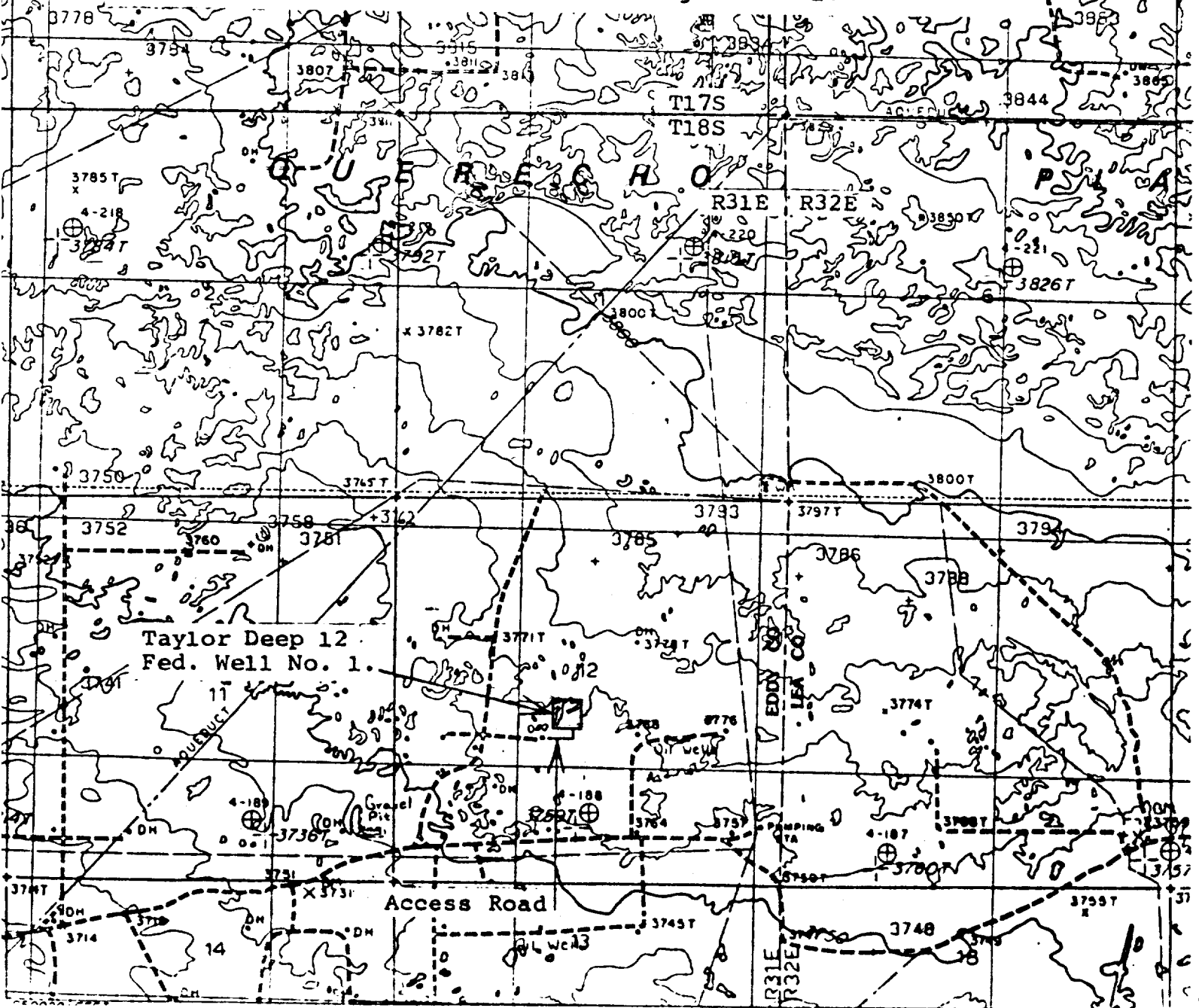


EXHIBIT D

Harvey E. Yates Co.  
Taylor Deep 12 Federal 1  
Eddy Co., New Mexico

