

UNITED STATES RECEIVED BY
DEPARTMENT OF THE INTERIOR
BUREAU OF LAND MANAGEMENT
MAD - 2 1987

30-015-25234
U. LEASE DESIGNATION AND SERIAL NO.

NM-025777

6. IF INDIAN, ALLOTTED OR TRIBE NAME

7. UNIT AGREEMENT NAME

8. FARM OR LEASE NAME

Geronimo Federal

9. WELL NO.

10

10. FIELD AND POOL, OR WILDCAT

East Shugart Delaware

11. SEC., T., R., M., OR BLK.
AND SURVEY OR AREA

Sec. 24: T18S, R31E

12. COUNTY OR PARISH

Eddy

13. STATE

NM

1a. TYPE OF WORK

DRILL ☒

DEEPEN ☐

ARTESIA, OFFICE

PLUG BACK ☐

b. TYPE OF WELL

OIL
WELL ☒

GAS
WELL ☐

OTHER

SINGLE
ZONE ☐

MULTIPLE
ZONE ☐

2. NAME OF OPERATOR

Siete Oil & Gas Corporation

3. ADDRESS OF OPERATOR

P. O. Box 2523, Roswell, NM 88201

4. LOCATION OF WELL (Report location clearly and in accordance with any State requirements.)*
At surface

2310' FSL, 1650' FEL, NW/4 SE/4, Unit Letter J
At proposed prod. zone

14. DISTANCE IN MILES AND DIRECTION FROM NEAREST TOWN OR POST OFFICE*

14.75 miles southeast of Loco Hills, NM

15. DISTANCE FROM PROPOSED*

LOCATION TO NEAREST
PROPERTY OR LEASE LINE, FT.
(Also to nearest drig. unit line, if any)

330'

16. NO. OF ACRES IN LEASE

320'

17. NO. OF ACRES ASSIGNED
TO THIS WELL

40

18. DISTANCE FROM PROPOSED LOCATION*

TO NEAREST WELL, DRILLING, COMPLETED,
OR APPLIED FOR, ON THIS TRACT, FT.

660'

19. PROPOSED DEPTH

5500'

20. ROTARY OR CABLE TOOLS

Rotary

21. ELEVATIONS (Show whether DF, RT, GR, etc.)

3700' GR

22. APPROX. DATE WORK WILL START*

March 1, 1987

23.

PROPOSED CASING AND CEMENTING PROGRAM

SIZE OF HOLE	SIZE OF CASING	WEIGHT PER FOOT	SETTING DEPTH	QUANTITY OF CEMENT
12 1/4"	8 5/8"	24.0#	350'	200 sx (circulate)
7 7/8"	5 1/2"	15.5#	5500'	2200 sx (circulate)

Selectively perforate and treat pay zones.

Attachments:

Survey plat (C-102)

Supplemental drilling data

Surface use plan

IN ABOVE SPACE DESCRIBE PROPOSED PROGRAM: If proposal is to deepen or plug back, give data on present productive zone and proposed new productive zone. If proposal is to drill or deepen directionally, give pertinent data on subsurface locations and measured and true vertical depths. Give blowout preventer program, if any.

24.

SIGNED

Shirley D. Gustaf

TITLE Vice President

DATE 2/23/87

(This space for Federal or State office use)

PERMIT NO.

APPROVAL DATE

APPROVED BY

Roy Green

TITLE

AREA MANAGER
CARLSBAD RESOURCE AREA

DATE

2-26-87

CONDITIONS OF APPROVAL, IF ANY:

*See Instructions On Reverse Side

**NEW MEXICO OIL CONSERVATION COMMISSION
WELL LOCATION AND ACREAGE DEDICATION PLAT**

Form C-102
Supersedes C-128
Effective 1-1-65

All distances must be from the outer boundaries of the Section

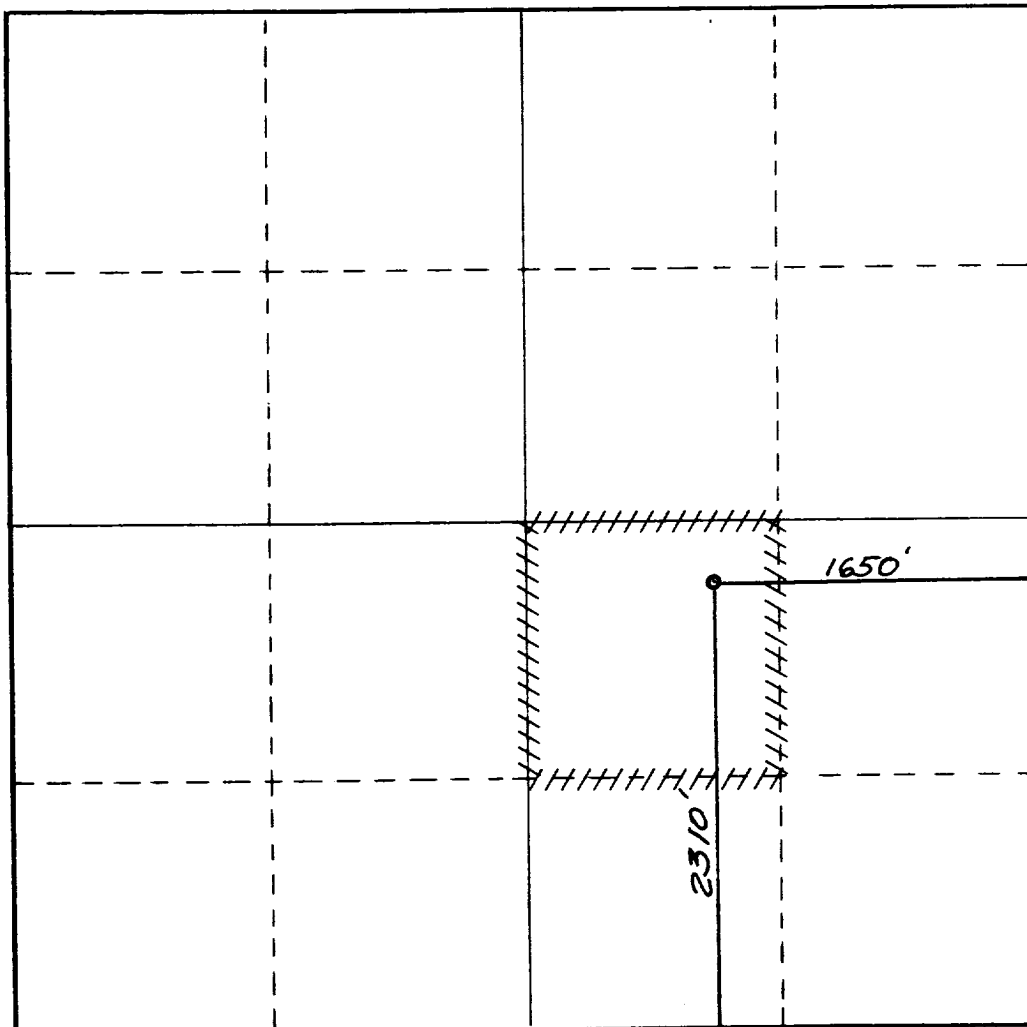
Operator SIETE OIL AND GAS CORPORATION			Lease Geronimo Federal		Well No. 10
Unit Letter J	Section 24	Township 18 South	Range 31 East	County Eddy	
Actual Footage Location of Well: 2310 feet from the South line and 1650 feet from the East line					
Ground Level Elev. 3700.	Producing Formation Delaware		Pool East Shugart Delaware		Dedicated Acreage: 40 Acres

1. Outline the acreage dedicated to the subject well by colored pencil or hatchure marks on the plat below.
2. If more than one lease is dedicated to the well, outline each and identify the ownership thereof (both as to working interest and royalty).
3. If more than one lease of different ownership is dedicated to the well, have the interests of all owners been consolidated by communitization, unitization, force-pooling, etc?

☐ Yes ☐ No If answer is "yes," type of consolidation _____

If answer is "no," list the owners and tract descriptions which have actually been consolidated. (Use reverse side of this form if necessary.) _____

No allowable will be assigned to the well until all interests have been consolidated (by communitization, unitization, forced-pooling, or otherwise) or until a non-standard unit, eliminating such interests, has been approved by the Commission.



CERTIFICATION

I hereby certify that the information contained herein is true and complete to the best of my knowledge and belief.

Name *Harold D. Justice*
 Position *V.P. Drilling & Production*
 Company *Siete Oil & Gas Corporation*
 Date *2/23/87*

I hereby certify that the well location shown on this plat was plotted from field notes of actual surveys made by me or under my supervision, and that the same is true and correct to the best of my knowledge and belief.

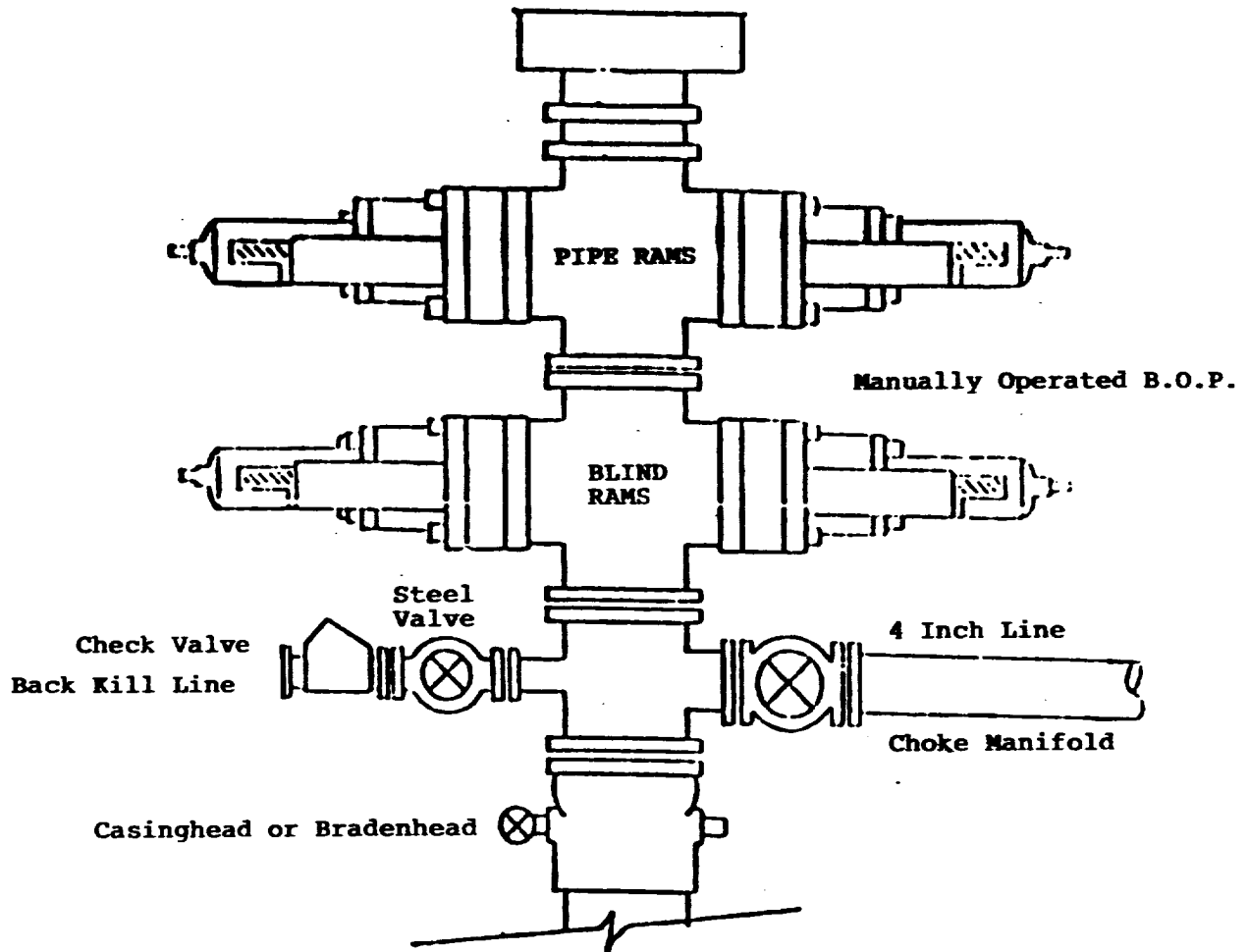
Date Surveyed
February 18, 1987

Registered Professional Engineer and/or Land Surveyor

Dan R. Reddy

Certificate No.
NM PE&LS NO. 5412

BOP DIAGRAM
RATED 3000#



SUPPLEMENTAL DRILLING DATA
SIETE OIL AND GAS CORPORATION
GERONIMO FEDERAL NO. 10
2310' FSL & 1650' FEL
Section 24: T18S, R31E
Eddy County, New Mexico
Lease Number - NM-025777

The following items supplement "Onshore Oil and Gas Order No. 1:

1. The geologic surface is quaternary.
2. The estimated geological marker tops:

Yates	2653'
Queen	3523'
Grayburg	3934'
San Andres	4430'
Delaware	4644'

3. Estimated depths to water, oil or gas:

Water: 220'

Oil or Gas: 4300' - 4900'

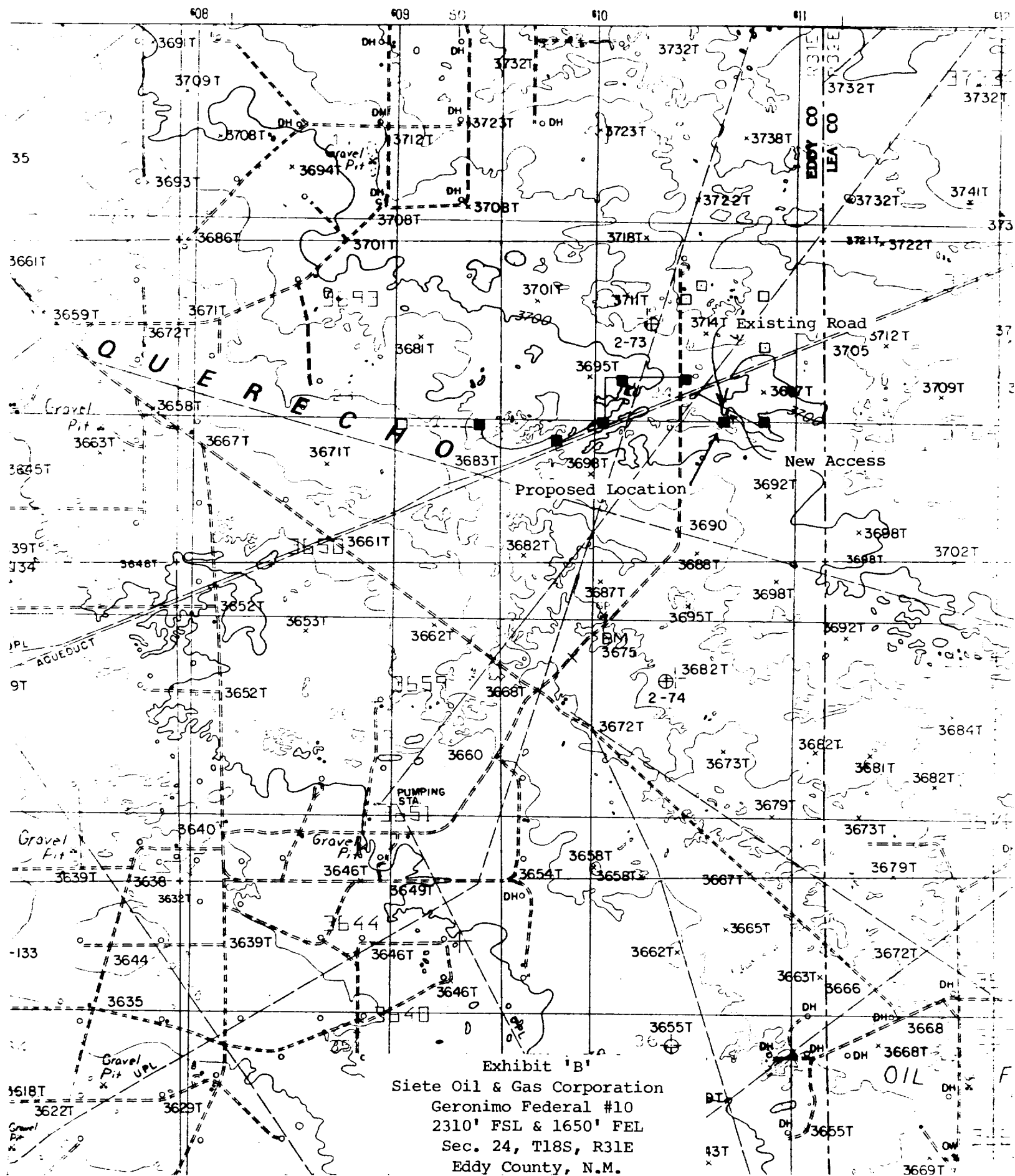
4. Proposed casing program:

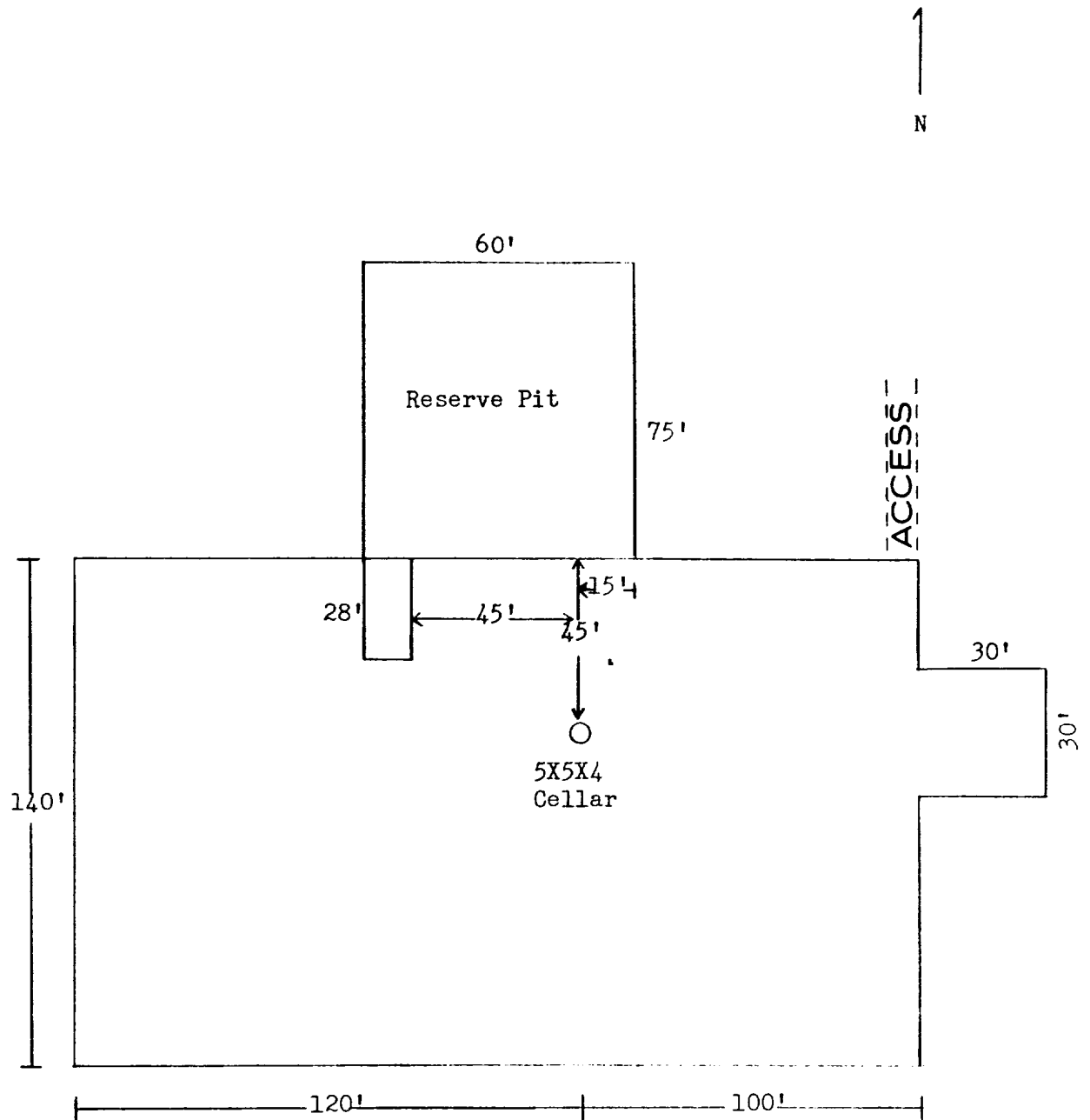
<u>Size</u>	<u>Interval</u>	<u>Weight</u>	<u>Grade</u>	<u>Joint</u>	<u>New or Used</u>
8 5/8"	0 - 350'	24#	J-55	ST&C	New
5 1/2"	0 - 5500'	15.5#	J-55	ST&C	New

5. Pressure Control Equipment: The blowout preventer will be a double ram type preventer. A sketch is attached.
6. Mud Program: 0-350': Native mud adding gel and lime for sufficient viscosity to insure clean hole for running casing.

350' - 5500': Native brine, add lime for ph @10 for corrosion protection. At 4200' add starch and salt gel to establish a viscosity of 32-38, mud weight 9.8 - 10.0#/gallon, water loss of 20 cc or less.
7. Auxiliary Equipment: A kelly cock will be installed on the rig floor while drilling operations are in progress.
8. Testing, Logging and Coring Programs: Possible drill stem tests and/or coring is not planned through the Grayburg Zone.

Logging: Compensated Neutron - Formation Density - Gamma Ray - Caliper - Dual Laterolog - RXO





I&M Drilling Rig No. 1

Exhibit 'D'
 Siete Oil & Gas Corporation
 Geronimo Federal #10
 2310' FSL & 1650' FEL
 Sec. 24, T18S, R31E
 Eddy County, N.M.