

NEW MEXICO OIL CONSERVATION COMMISSION
WELL LOCATION AND ACREAGE DEDICATION PLAT

Form C-102
Supersedes C-128
Effective 1-1-85

All distances must be from the outer boundaries of the Section

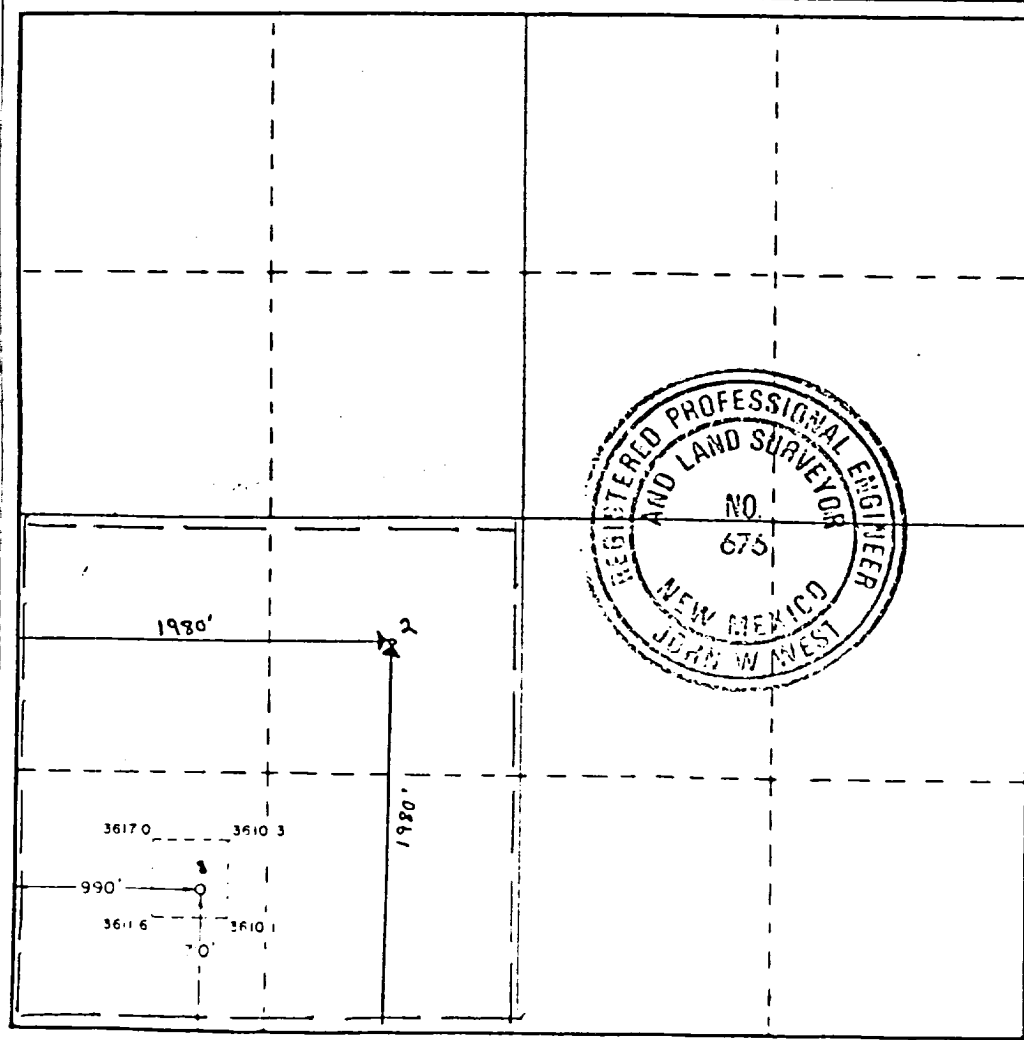
| | | | | | |
|--|--|--------------------------------|---|--|----------------------|
| Operator Conoco, Inc. | | Lease Lehman Federal | | | Well No. 1 |
| Unit Letter M | Section 18 | Township 19 South | Range 25 East | County Eddy | |
| Actual Footage Location of Well: 710 feet from the south line and 990 feet from the west line | | | | | |
| Ground Level Elev. 3612.7 | Producing Formation Cisco Canyon | | Pool No. Dagger Draw Upper Penn | Dedicated Acreage: 160 Acres | |

1. Outline the acreage dedicated to the subject well by colored pencil or hachure marks on the plat below.
2. If more than one lease is dedicated to the well, outline each and identify the ownership thereof (both as to working interest and royalty).
3. If more than one lease of different ownership is dedicated to the well, have the interests of all owners been consolidated by communitization, unitization, force-pooling, etc?

Yes No If answer is "yes," type of consolidation Communitization

If answer is "no," list the owners and tract descriptions which have actually been consolidated. (Use reverse side of this form if necessary.)

No allowable will be assigned to the well until all interests have been consolidated (by communitization, unitization, forced-pooling, or otherwise) or until a non-standard unit, eliminating such interests, has been approved by the Commission.



CERTIFICATION

I hereby certify that the information contained herein is true and complete to the best of my knowledge and belief.

Name D.F. Finney
Position Adm. Supervisor

Company Conoco Inc.

Date 10/3/88

I hereby certify that the well location shown on this plat was plotted from field notes of actual surveys made by me or under my supervision, and that the same is true and correct to the best of my knowledge and belief.

Date Surveyed September 20, 1988

Registered Professional Engineer and Land Surveyor

Ronald J. Eidson
Certificate No. JOHN W. WEST, 676

09550