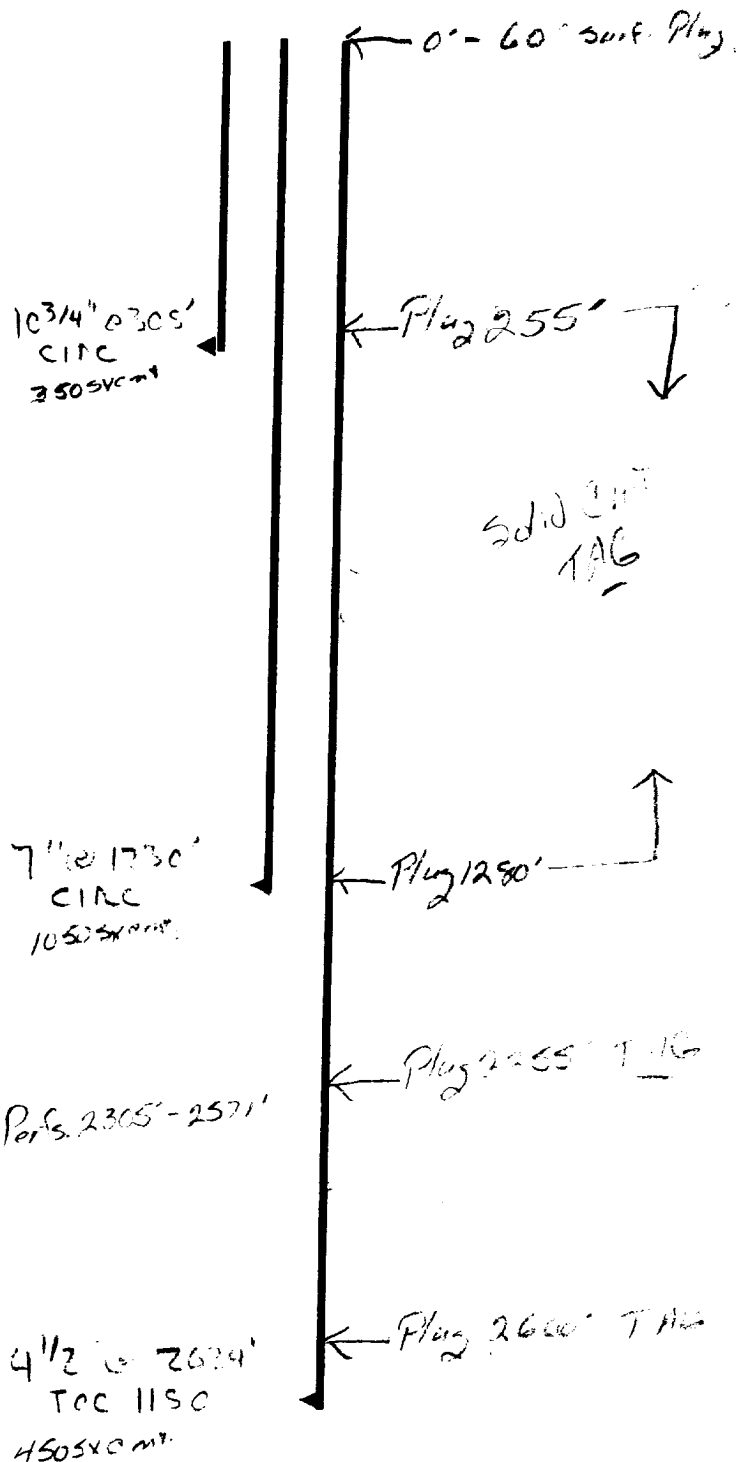


Operator Dwaine Parrish  
 Well Schrennaker State #4  
 Unit 6 Section 12 Township 19 Range 29  
 API # 30-015-26019

# TOPS

Salade	320'
B Salt	1110'
Gates	1410'
T Rivers	1765'
Queen	2700'
Gringburg	2540'



- \* Contact OCD 24 hrs. prior to any work done.
- \* Salt gel mud consisting of 10# brine with 25# of gel per barrel must be placed between each plug.
- \* Install dry hole marker as per Rule 202.B.2
- \* Plugs are to be set from point indicated up.
- \* Plugs must not be less than 100' or 25 Sacks of cement, whichever is greater, unless specifically indicated.
- \* Shoe and stub plugs will be 50' above and below shoe or stub and tagged.
- \* Surface plug will be from 0' - 60'
- \* Where plugs are required, cement must be placed inside and outside of all casing string(s) in the correct footage or sacks required, if no cement exists.
- \* Plugs to be tagged will be indicated.

*Handwritten signature/initials*