

NEW OIL & GAS COMMISSION  
DIRECTOR  
Artesia

UNITED STATES  
DEPARTMENT OF THE INTERIOR  
BUREAU OF LAND MANAGEMENT

SUBMIT IN TR. DATE  
(Other instructions on reverse side)

30-015-26150 YSF  
Form approved.  
Budget Bureau No. 1004-0136  
Expires August 31, 1985

APPLICATION FOR PERMIT TO DRILL, DEEPEN, OR PLUG BACK

1a. TYPE OF WORK  
 DRILL  DEEPEN  PLUG BACK

b. TYPE OF WELL  
 OIL WELL  GAS WELL  OTHER

2. NAME OF OPERATOR  
 Harvey E. Yates Company

3. ADDRESS OF OPERATOR  
 P.O. Box 1933, Roswell, New Mexico 88202

4. LOCATION OF WELL (Report location clearly and in accordance with any State requirements.)  
 At surface: 1650' FSL & 660' FEL  
 At proposed prod. zone: same

14. DISTANCE IN MILES AND DIRECTION FROM NEAREST TOWN OR POST OFFICE\*  
 9 miles south & east of Loco Hills, New Mexico

15. DISTANCE FROM PROPOSED LOCATION TO NEAREST PROPERTY OR LEASE LINE, FT. (Also to nearest drilg. unit line, if any) 660'

16. NO. OF ACRES IN LEASE 240

17. NO. OF ACRES ASSIGNED TO THIS WELL 40

18. DISTANCE FROM PROPOSED LOCATION TO NEAREST WELL, DRILLING, COMPLETED, OR APPLIED FOR, ON THIS LEASE, FT. 1360'

19. PROPOSED DEPTH 5500

20. ROTARY OR CABLE TOOLS Rotary

21. ELEVATIONS (Show whether DF, RT, GR, etc.) 3727.2 GL

22. APPROX. DATE WORK WILL START\* ASAP

5. LEASE DESIGNATION AND SERIAL NO.  
 NM-2537

6. IF INDIAN, ALLOTTEE OR TRIBE NAME

7. UNIT AGREEMENT NAME

8. FARM OR LEASE NAME  
 South Taylor 13 Federal

9. WELL NO.  
 #4

10. FIELD AND POOL, OR WILDCAT  
 East Shugart Delaware

11. SEC., T., R., M., OR BLK. AND SURVEY OR AREA  
 Sec. 13, T18S, R31E

12. COUNTY OR PARISH  
 Eddy

13. STATE  
 NM

RECEIVED  
 JUL 13 '89  
 O. C. D.  
 ARTESIA, OFFICE

PROPOSED CASING AND CEMENTING PROGRAM

SIZE OF HOLE	SIZE OF CASING	WEIGHT PER FOOT	SETTING DEPTH	QUANTITY OF CEMENT
14 3/4	9 5/8	32.30	350	Circ to surface
7 7/8	5 1/2	15.5	5500	Circ to surface

MUD PROGRAM:

0 - 350 Spud mud  
 350 - 5500 Brine Water

APPROVAL SUBJECT TO  
 GENERAL REQUIREMENTS AND  
 SPECIAL STIPULATIONS  
 ATTACHED

POST ID-1  
 NL&API  
 7-21-89

RECEIVED  
 JUN 23 12 31 PM '89  
 CARLSBAD AREA

IN ABOVE SPACE DESCRIBE PROPOSED PROGRAM: If proposal is to deepen or plug back, give data on present productive zone and proposed new productive zone. If proposal is to drill or deepen directionally, give pertinent data on subsurface locations and measured and true vertical depths. Give blowout preventer program, if any.

24. SIGNED N. M. Young NM Young TITLE Drilling Superintendent DATE 6/26/89

(This space for Federal or State office use)

PERMIT NO. \_\_\_\_\_ APPROVAL DATE \_\_\_\_\_  
 AREA MANAGER  
 APPROVED BY Saravindra P. Poretti TITLE CARLSBAD RESOURCE AREA DATE 7-10-89  
 CONDITIONS OF APPROVAL, IF ANY:

\*See Instructions On Reverse Side

Submit to Appropriate District Office  
State Lease - 4 copies  
Fee Lease - 3 copies

State of New Mexico  
Energy, Minerals and Natural Resources Department

Form C-102  
Revised 1-1-89

OIL CONSERVATION DIVISION

P.O. Box 2088  
Santa Fe, New Mexico 87504-2088

DISTRICT I  
P.O. Box 1980, Hobbs, NM 88240

DISTRICT II  
P.O. Drawer DD, Artesia, NM 88210

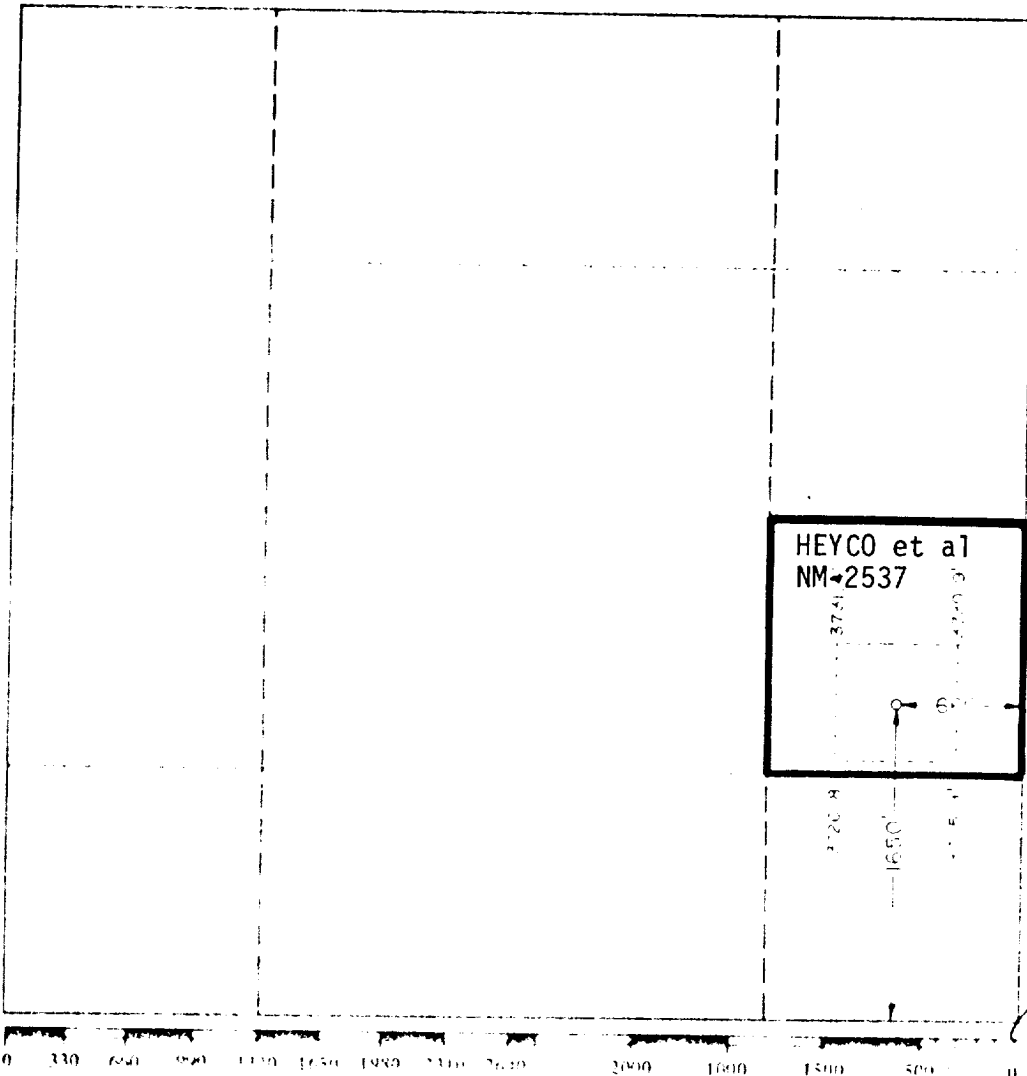
DISTRICT III  
1000 Rio Brazos Rd., Aztec, NM 87410

WELL LOCATION AND ACREAGE DEDICATION PLAT

All Distances must be from the outer boundaries of the section

Operator		Lease		Well No.	
Unit Letter	Section	Township	Range	County	
	13	18 South	31 East	NMPM	Eddy
Actual Footage Location of Well					
Ground level Elev	feet from the	Producing Formation	line and	feet from the	Dedicated Acreage
3727.2	660	Delaware	Pool	East Shugart	40 Acres

- Outline the acreage dedicated to the subject well by colored pencil or hachure marks on the plat below.
  - If more than one lease is dedicated to the well, outline each and identify the ownership thereof (both as to working interest and royalty)
  - If more than one lease of different ownership is dedicated to the well, have the interest of all owners been consolidated by communitization, unitization, force-pooling, etc?
    - Yes  No  If answer is "yes" type of consolidation
 If answer is "no" list the owners and tract descriptions which have actually been consolidated. (Use reverse side of this form if necessary)
- No allowable will be assigned to the well until all interests have been consolidated (by communitization, unitization, forced pooling, or otherwise) or until a non standard unit, eliminating such interest, has been approved by the Division.



OPERATOR CERTIFICATION

I hereby certify that the information contained herein is true and complete to the best of my knowledge and belief

Signature *H. M. Young*

NM Young

Drilling Superintendent

Harvey E. Yates Company

6/26/89

Date

SURVEYOR CERTIFICATION

I have examined the plat and find that the information contained herein is true and complete to the best of my knowledge and belief

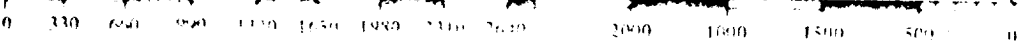
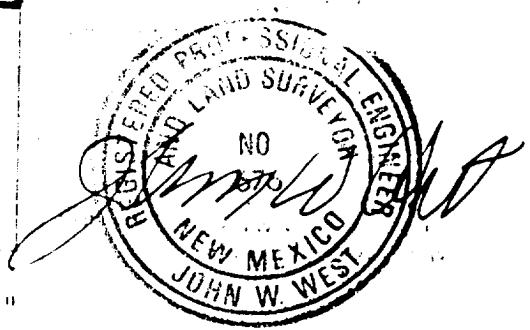
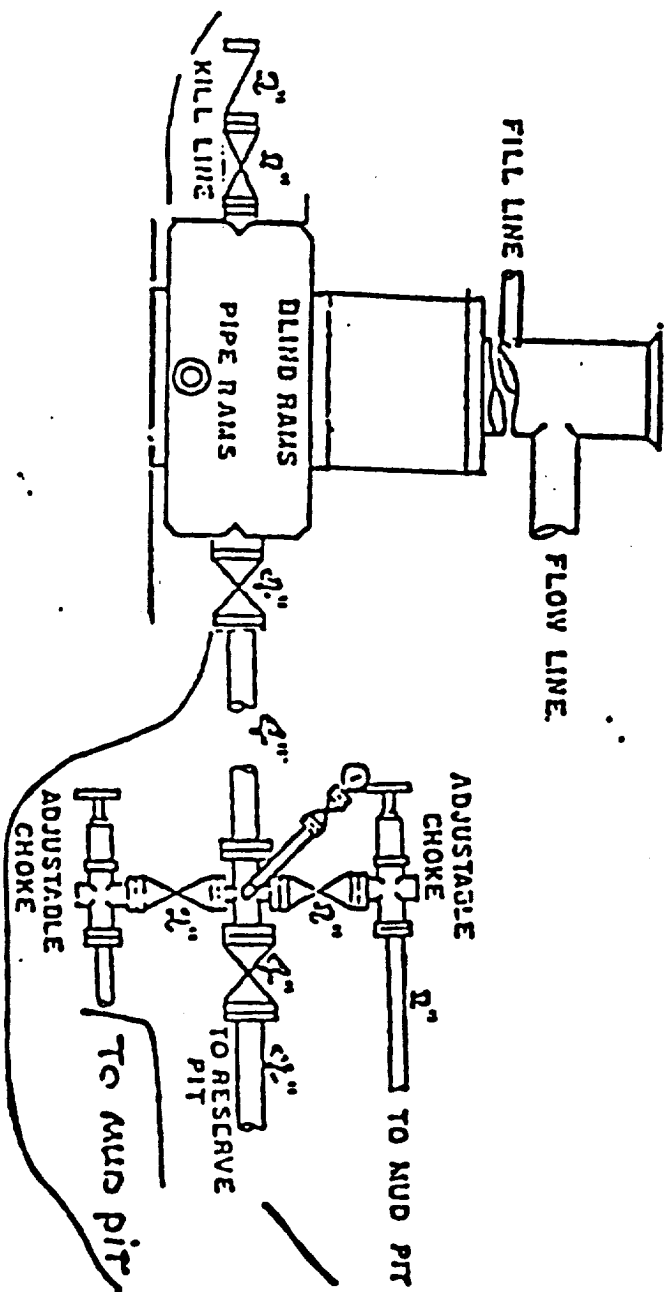


EXHIBIT C

Harvey E. Yates Co.  
South Taylor 13 Federal #4  
1650' FSL & 660' FEL  
Sec. 13 T-18S R-31E  
Eddy Co., New Mexico

900 Series



Application

HARVEY E. YATES COMPANY  
South Taylor 13 Fedal #4  
Sec. 13, T18S, R31E  
Eddy County, New Mexico

In conjunction with Form 3160-3, Application for Permit to Drill the Subject well in Section 13, Township 18 South, Range 31 East, Eddy County, New Mexico, Harvey E. Yates Company submits the following ten items of pertinent information in accordance with Bureau of Land Management requirements:

1. The geologic surface formation is quaternary alluvium and bolson deposits and other surficial deposits.
2. The estimated tops of geologic markers are as follows:

*1900' TOS*  
*12200' BOS* →

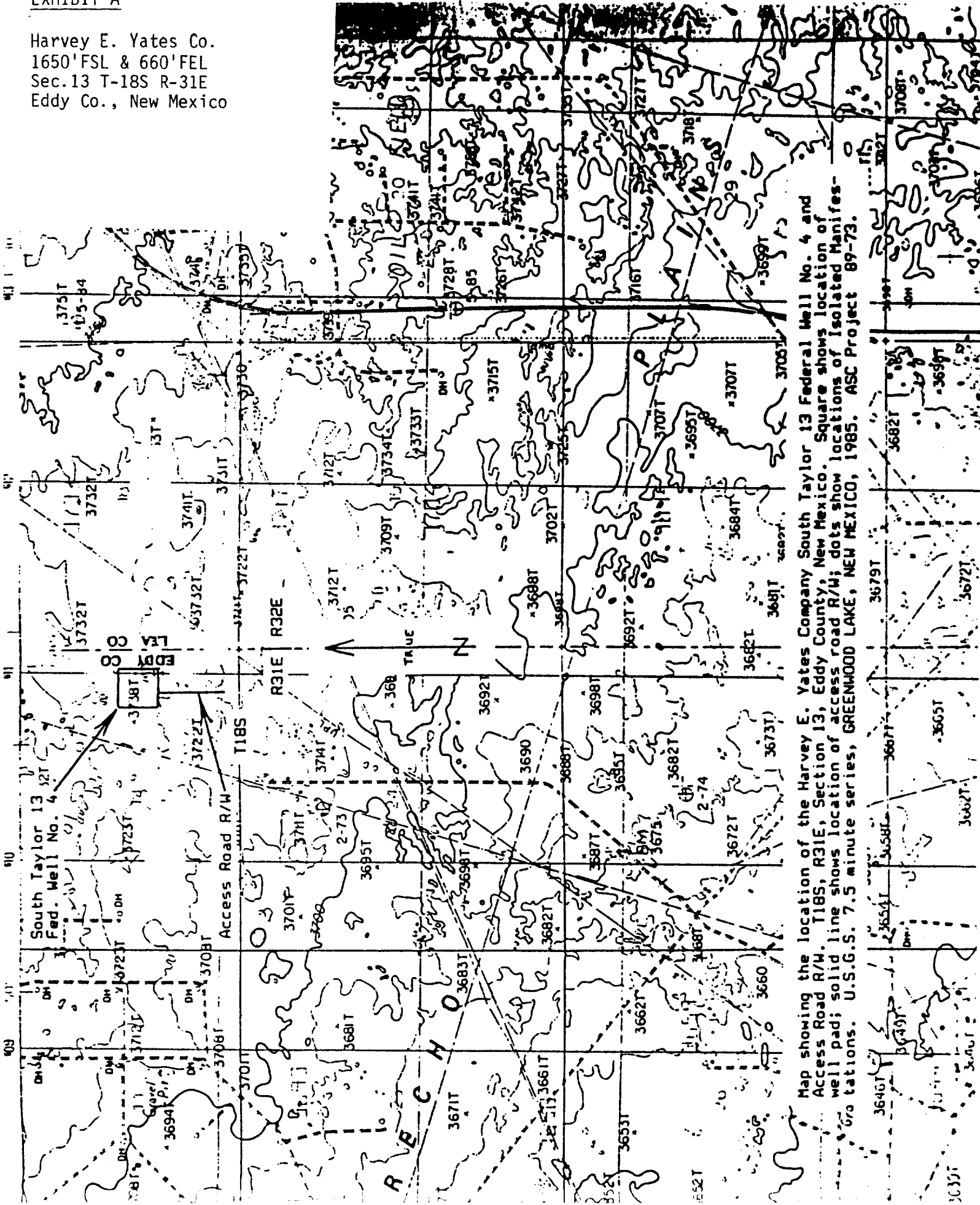
Rustler	865'	Grayburg	4120'
Yates	2445'	Delaware Sand	5325'
Seven Rivers	2840'	TD	5500'
Queen	3520		

3. We do not anticipate finding water but have listed the formation in which we anticipate finding oil or gas.  

Delaware            5325'
4. Proposed casing program: See Form 3160-3
5. Pressure control equipment: See Exhibit C. Although the rig equipment is 3M rated, this is only a 2M PSI rated well.
6. Mud program: See Form 3160-3.
7. Auxiliary equipment: Blowout preventer
8. Testing, logging and coring programs: We are not planning to do any coring or DST's. Planned logs are DLL-Micro w/GR and Caliper, CN-Den w/GR & Caliper.
9. No abnormal pressures or temperatures are anticipated.
10. Anticipated starting date: As soon as possible.

EXHIBIT A

Harvey E. Yates Co.  
1650' FSL & 660' FEL  
Sec. 13 T-18S R-31E  
Eddy Co., New Mexico



Map showing the location of the Harvey E. Yates Company South Taylor 13 Federal Well No. 4 and Access Road R/W. T18S, R31E, Section 13, Eddy County, New Mexico. Square shows location of well pad; solid line shows location of access road R/W; dots show locations of Isolated Manifestations. U.S.G.S. 7.5 minute series, GREENWOOD LAKE, NEW MEXICO, 1985. ASC Project 89-73.

EXHIBIT D

Harvey E. Yates Co.  
South Taylor 13 Federal #4  
1650'FSL & 660'FEL  
Sec.13 T-18S R-31E  
Eddy Co., New Mexico

