

**NEW MEXICO OIL CONSERVATION COMMISSION
WELL LOCATION AND ACREAGE DEDICATION PLAT**

Form C-102
Supersedes C-128
Effective 1-4-65

All distances must be from the outer boundaries of the Section

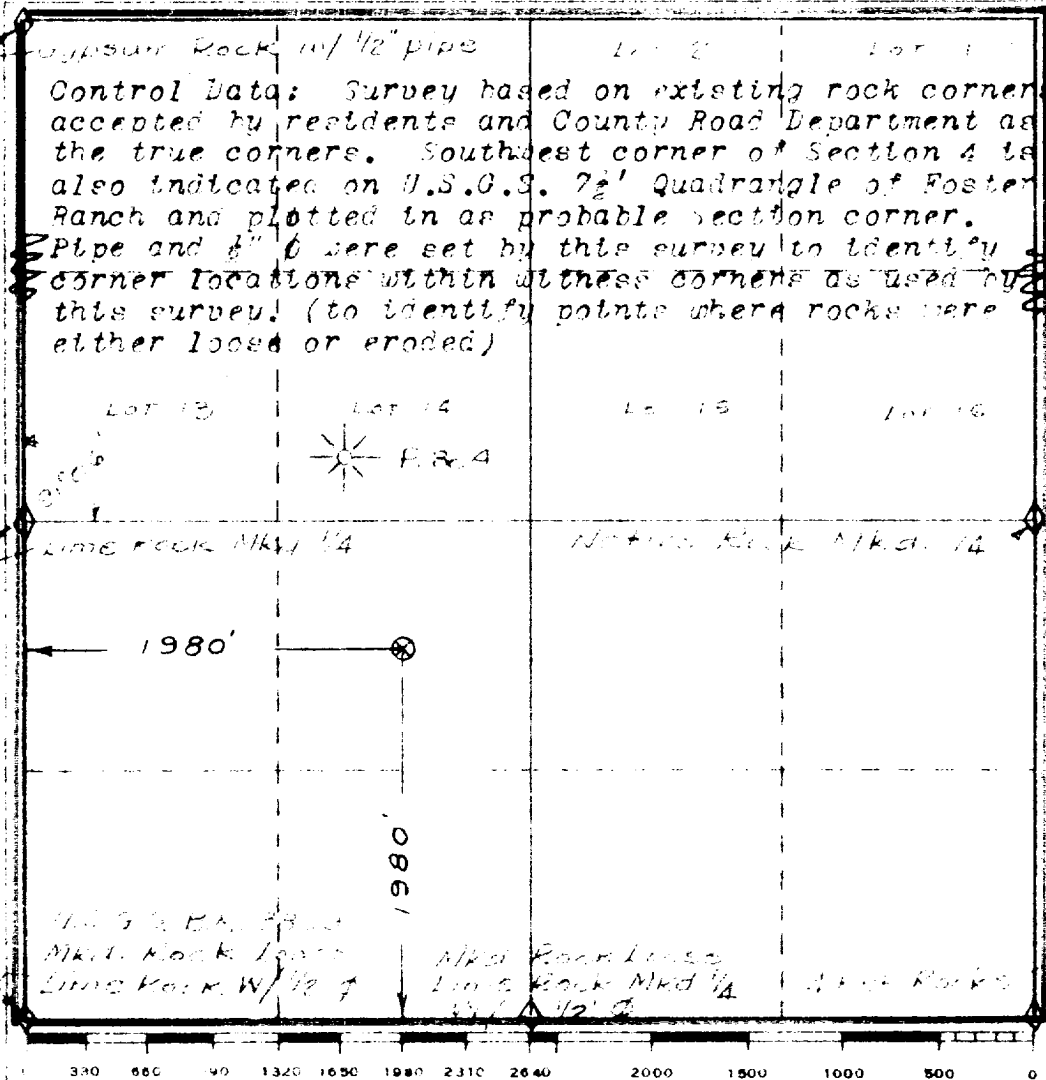
Operator DAVID FASKEN			Lease ROSS - FEDERAL		Well No. 1
Unit Letter S	Section 4	Township 21 South	Range 24 East	County Eddy	
Actual Footage Location of Well:					
1980 feet from the South line and		1980 feet from the West line			
Ground Level Elev. 3795	Producing Formation Miss.	Pool Wildcat	Dedicated Acreage: 924.6 Acres		

1. Outline the acreage dedicated to the subject well by colored pencil or hachure marks on the plat below.
2. If more than one lease is dedicated to the well, outline each and identify the ownership thereof (both as to working interest and royalty). (See Attached Plat)
3. If more than one lease of different ownership is dedicated to the well, have the interests of all ~~when been consolidated~~ by communitization, unitization, force-pooling, etc?

☒ Yes ☐ No If answer is "yes," type of consolidation Communitization **MAR 29 1965**

If answer is "no," list the owners and tract descriptions which have actually been consolidated. (Use reverse side of this form if necessary.) **D. C. C. ARTESIA, OFFICE**

No allowable will be assigned to the well until all interests have been consolidated (by communitization, unitization, forced-pooling, or otherwise) or until a non-standard unit, eliminating such interests, has been approved by the Commission.



CERTIFICATION

I hereby certify that the information contained herein is true and complete to the best of my knowledge and belief.

James B. Henry
Name **James B. Henry**

Position

Agent

Company

DAVID FASKEN

Date

3-18-65

I hereby certify that the well location shown on this plat was plotted from field notes of actual surveys made by me or under my supervision, and that the same is true and correct to the best of my knowledge and belief.

Date Survey

March 15, 1965

Registered Professional Engineer and/or Land Surveyor

John W. Shearn
Certificate No. **1589**