

MEXICO OIL CONSERVATION COMMISSION
 WELL LOCATION AND ACREAGE DEDICATION PLAT

RECEIVED

Supersedes O-125
 Effective 1-1-55

All distances must be from the outer boundaries of the Section.

AUG 16 '89

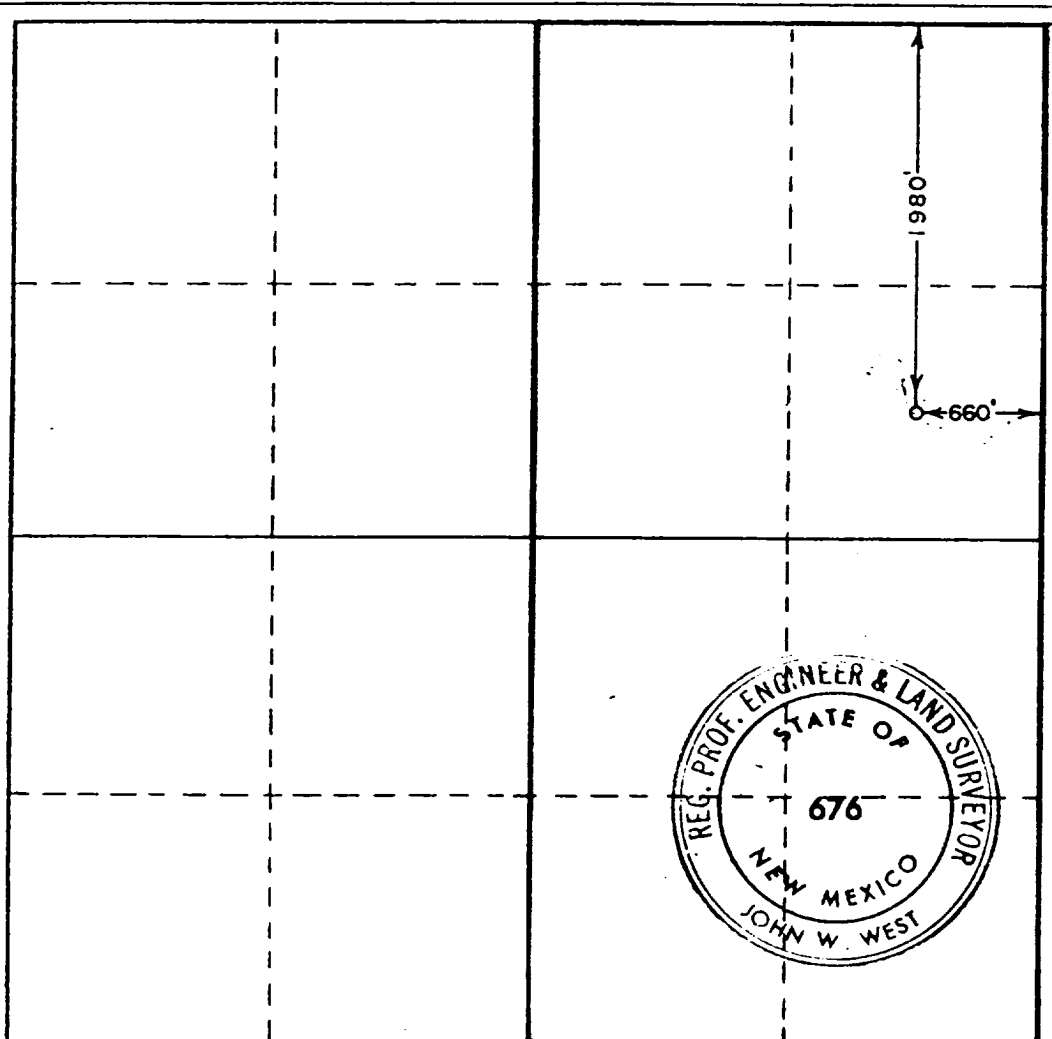
Operator TEXAS OIL & GAS CORPORATION		Lease YATES FEDERAL		Well No. 4	
Unit Letter H	Section 18	Township 20 South	Range 29 East	County ARTESIA, OFFICE Eddy	
Actual Footage Location of Well: 1980 feet from the North line and 660 feet from the East line					
Ground Level Elev. 3265 GL	Producing Formation Strawn	Pool Burton Flat, East		Dedicated Acreage: 320 Acres	

1. Outline the acreage dedicated to the subject well by colored pencil or hachure marks on the plat below.
2. If more than one lease is dedicated to the well, outline each and identify the ownership thereof (both as to working interest and royalty).
3. If more than one lease of different ownership is dedicated to the well, have the interests of all owners been consolidated by communitization, unitization, force-pooling, etc?

Yes No If answer is "yes," type of consolidation _____

If answer is "no," list the owners and tract descriptions which have actually been consolidated. (Use reverse side of this form if necessary.) _____

No allowable will be assigned to the well until all interests have been consolidated (by communitization, unitization, forced-pooling, or otherwise) or until a non-standard unit, eliminating such interests, has been approved by the Commission.



CERTIFICATION

I hereby certify that the information contained herein is true and complete to the best of my knowledge and belief.

J. R. Colter

Name J. R. Colter
Position Petroleum Engineer
Company Texas Oil & Gas Corp.
Date December 26, 1973

I hereby certify that the well location shown on this plat was plotted from field notes of actual surveys made by me or under my supervision, and that the same is true and correct to the best of my knowledge and belief.

Date Surveyed December 14, 1973
Registered Professional Engineer and/or Land Surveyor

John W. West
 Certificate No. **676**

