

UNITED STATES
DEPARTMENT OF THE INTERIOR

GEOLOGICAL SURVEY

30-015-21092

APPLICATION FOR PERMIT TO DRILL, DEEPEN, OR PLUG BACK

1a. TYPE OF WORK

DRILL ☒DEEPEN ☐PLUG BACK ☐

b. TYPE OF WELL

OIL
WELL ☒GAS
WELL ☐

OTHER

SINGLE
ZONE ☒MULTIPLE
ZONE ☐

2. NAME OF OPERATOR

Yates Drilling Company

3. ADDRESS OF OPERATOR

207 South 4th Street - Artesai, NM 88210

4. LOCATION OF WELL (Report location clearly and in accordance with any State requirements.)*

At surface

940' FSL & 1980' FEL of Sec. 35-T20½-R21E

At proposed prod. zone

14. DISTANCE IN MILES AND DIRECTION FROM NEAREST TOWN OR POST OFFICE*

20 miles South of Hope, New Mexico

15. DISTANCE FROM PROPOSED*

LOCATION TO NEAREST

PROPERTY OR LEASE LINE, FT.

(Also to nearest drlg. unit line, if any)

360'

16. NO. OF ACRES IN LEASE

480

17. NO. OF ACRES ASSIGNED

TO THIS WELL

40

18. DISTANCE FROM PROPOSED LOCATION*

TO NEAREST WELL, DRILLING, COMPLETED,

OR APPLIED FOR, ON THIS LEASE, FT.

None

19. PROPOSED DEPTH

Approx. 1200'

20. ROTARY OR CABLE TOOLS

Cable Tools

21. ELEVATIONS (Show whether DP, RT, GR, etc.)

4589' GR

22. APPROX. DATE WORK WILL START*

1-28-74

23.

PROPOSED CASING AND CEMENTING PROGRAM

SIZE OF HOLE	SIZE OF CASING	WEIGHT PER FOOT	SETTING DEPTH	QUANTITY OF CEMENT
15"	13-3/8"	48#	30' Conductor	Ready-mix
8"	4½"	9.5#	1200'	Circulated

Propose to drill with Cable Tools to 1200' to test both lower San Andres and Glorieta formations.

RECEIVED

JAN 31 1974

G. C. C.
ARTESIA, OFFICE

RECEIVED

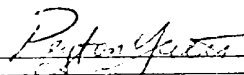
JAN 15 1974

U. S. GEOLOGICAL SURVEY
ARTESIA, NEW MEXICO

IN ABOVE SPACE DESCRIBE PROPOSED PROGRAM: If proposal is to deepen or plug back, give data on present productive zone and proposed new productive zone. If proposal is to drill or deepen directionally, give pertinent data on subsurface locations and measured and true vertical depths. Give blowout preventer program, if any.

24.

SIGNED



TITLE

Engineer

DATE

1-15-74

(This space for Federal or State office use)

JAN 29 1974

PERMIT NO.

APPROVAL DATE

APPROVED BY

CONDITIONS OF APPROVAL, IF ANY:

TITLE

DATE

NOTIFY USGS IN SUFFICIENT TIME TO
WEIGHT CEMENTING THE 4½" CASING.

*See Instructions On Reverse Side

NEW MEXICO OIL CONSERVATION COMMISSION
DECLARATION AND ACREAGE DEDICATION PLAT

Form No. 1
Superseded by 1-74
Effective 1-74

Section boundaries of the Section

YATES DRILLING COMPANY			El Paso		Well No. 1
"G"	35	20 1/2 S.	21 E	County Eddy	
940	South	1980	feet from the East		
4569	San Andres	Wildcat		Dedicated Acreage 40	

Indicate acreage dedication to the subject well by colored pencil or hachure marks on the plat below.

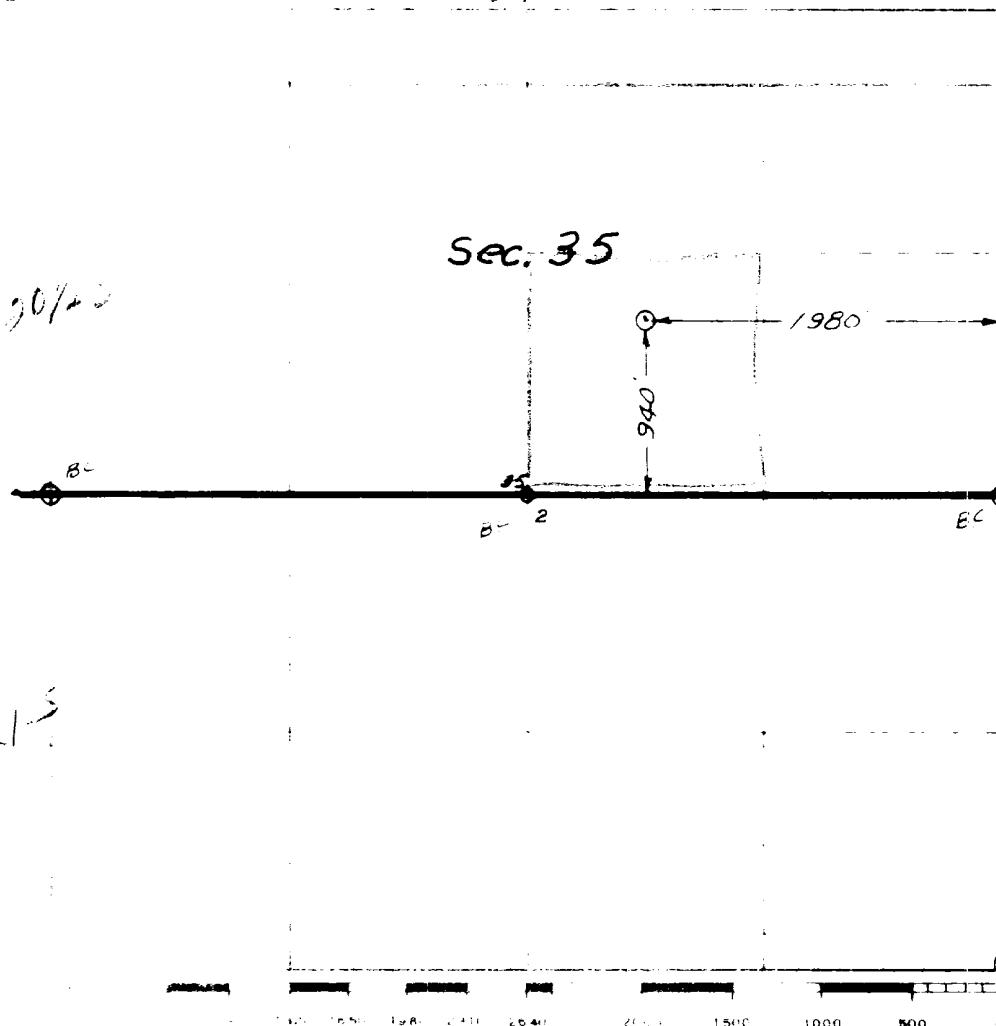
If more than one well is dedicated to the well, outline each and identify the ownership thereof (both as to working interest and leasehold).

If lease of different ownership is dedicated to the well, have the interests of all owners been consolidated by communitization, unitization, or a pooling agreement?

No. If answer is "Yes," specify consolidation _____

List the owners and their leasehold interests which have actually been consolidated. (Use reverse side of this plat for listing.) _____

If leasehold to the well, mineral interests have been consolidated (by communitization, unitization, or otherwise) or if the consolidation unit communitizing such interests, has been approved by the Board of _____



CERTIFICATION

I hereby certify that the information contained herein is true and complete to the best of my knowledge and belief.

Peyton Yates
Name
Peyton Yates

Position
Engineer

Company
Yates Drilling Company

Date
1-15-74
RECEIVED

I hereby certify that the information shown on this plat is a true and correct copy of the notes of actual survey under my supervision, and the same is true and correct to the best of my knowledge and belief.

Date Surveyed

January 13, 1974

Registered Professional Land Surveyor and/or Land Surveyor

Certificate No.

3640

Development plan for surface use to accompany, "Applications to Drill Onshore Oil, Gas, or Geothermal Steam Wells on Public Domain and acquired Federal Lands:"

1. Existing roads. See Attached Maps
2. Planned access roads. Will utilize existing roads. See maps. Proposed location is 20 miles South of Hope, NM.
3. Location of wells. 940' FSL and 1980' FEL, Sec. 35-T20 $\frac{1}{2}$ -R21E
4. Lateral roads to wells locations. See attached map. Approx. 2000' of road will have to be bladed to move in and out Cable Tool Rig & personnel
5. Location of tank batteries and flowlines. See Attached Map
6. Locations and types of water supply. Fresh water purchased at Hope, NM
7. Methods for handling waste disposal. Engine oil & trash will be disposed of in waste pit.
8. Location of camps. None
9. Location of airstrips. None
10. Location layout to include position of the rig, mud tanks, reserve pits, burn pits, pipe racks, etc. See Sketch.
11. Plans for restoration of the surface. Waste pit will be dried & leveled. Burn pit and tank pad will not be built unless producing, then will be fenced. Surface will be restored near to original.
12. Any other information which the Approving Official considers essential to his assessment of the impact on the environment. Location is flanked on North & South by dry drainage gullies. Ground is very rocky. Plant cover is Century, Yucca, Choya and assorted Cacti. Grass is mixture of wild range grasses scattered in clumps.

The affected Federal and State surface managing agencies shall have access to or, if feasible, may be provided with copies of such development

Submitted by:

Yates Drilling Company

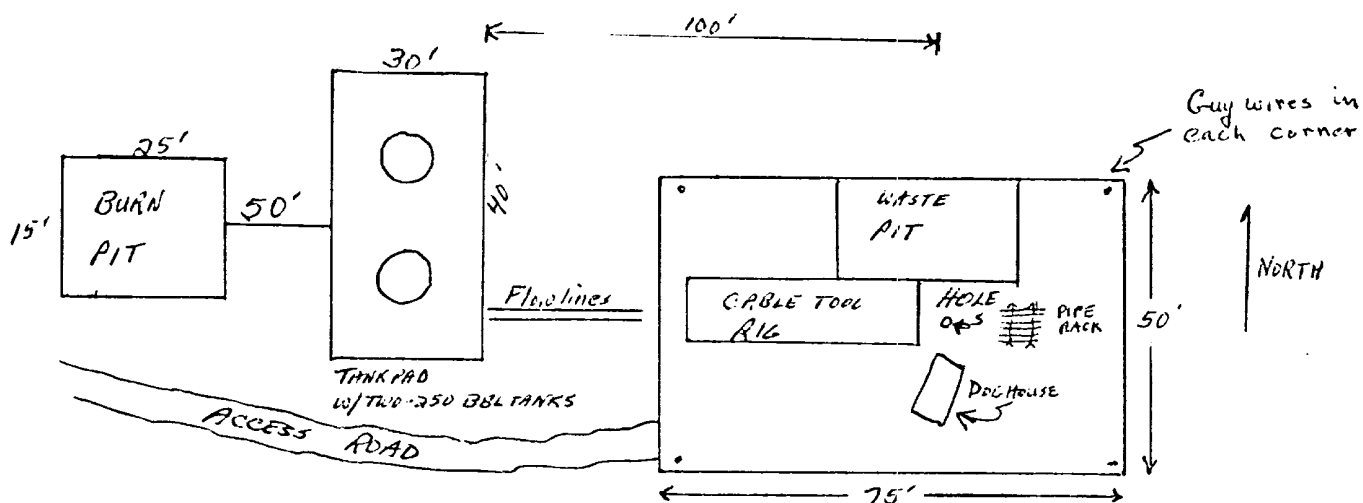
By Peyton Yates
Peyton Yates - Engineer

Approved by:

U. S. Geological Survey

By _____

RECEIVED
JAN 15 1974
U. S. GEOLOGICAL SURVEY
ARTESIA, NEW MEXICO



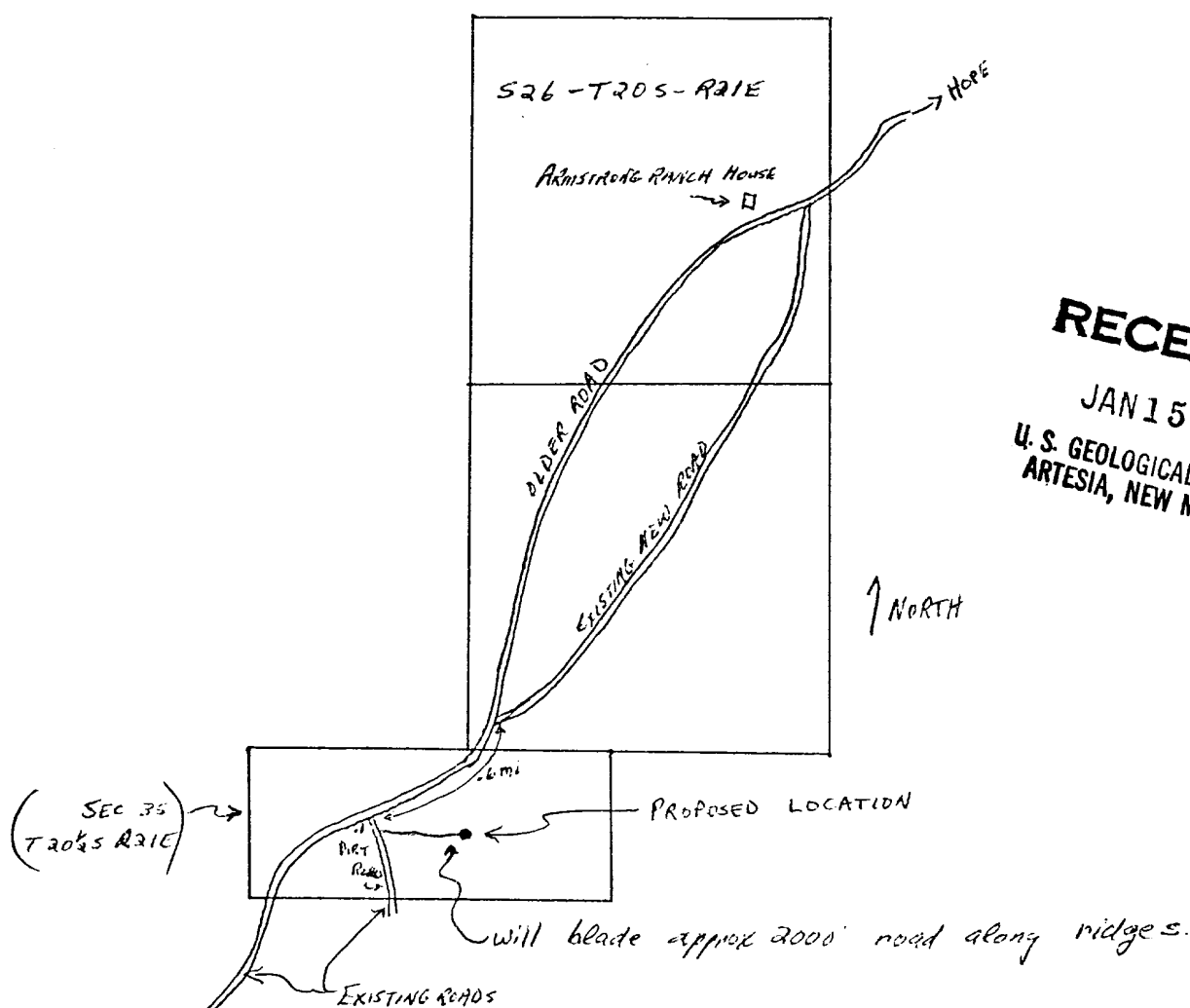
NOT TO SCALE

Proposed well site & battery site.

YATES DRILLING COMPANY

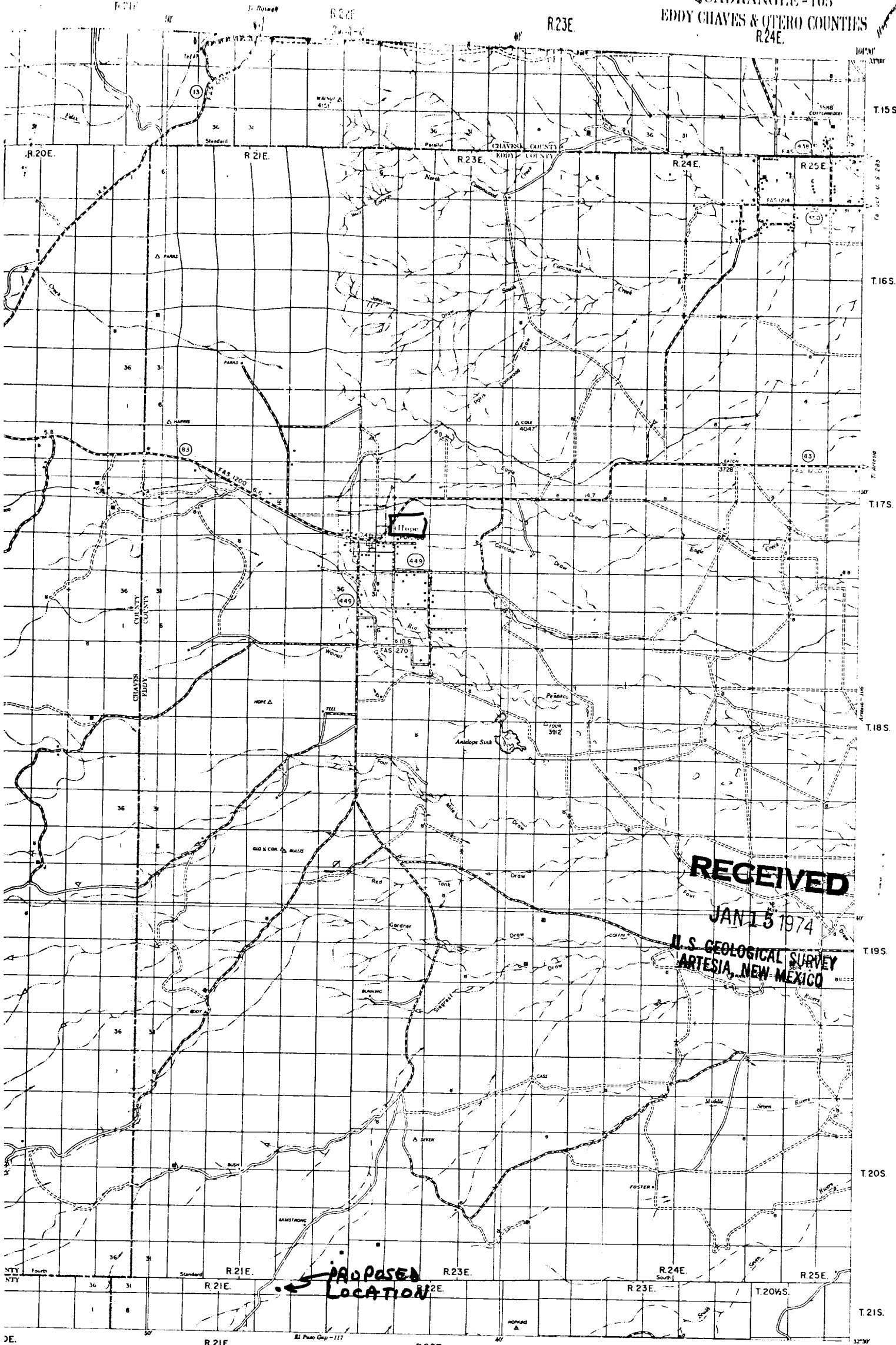
-

EL PASO #1, 940' FSL & 1980' FEL
Sec. 35-T20 $\frac{1}{2}$ S-R21E



RECEIVED
JAN 15 1974
U. S. GEOLOGICAL SURVEY
ARTESIA, NEW MEXICO

HOPE
QUADRANGLE-105
EDDY CHAVES & OTERO COUNTIES
R24E.



RECEIVED
JAN 13 1974
U.S. GEOLOGICAL SURVEY
ARTESIA, NEW MEXICO

Scale 1 inch = 3 Miles
1 1/2 0 1 2 3 4
STATUTE MILES

DATE OF INVENTORY
EDDY COUNTY 1957
CHAVES COUNTY 1959
OTERO COUNTY 1952

HOPE
QUADRANGLE
105

YATES DRILLING CO
EL PASO #1