

NEW MEXICO OIL CONSERVATION COMMISSION
WELL LOCATION AND ACREAGE DEDICATION PLAT

Form C-102
Supersedes C-128
Effective 1-1-65

All distances must be from the outer boundaries of the Section

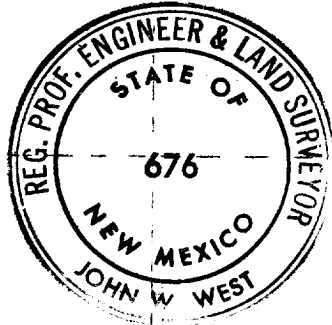
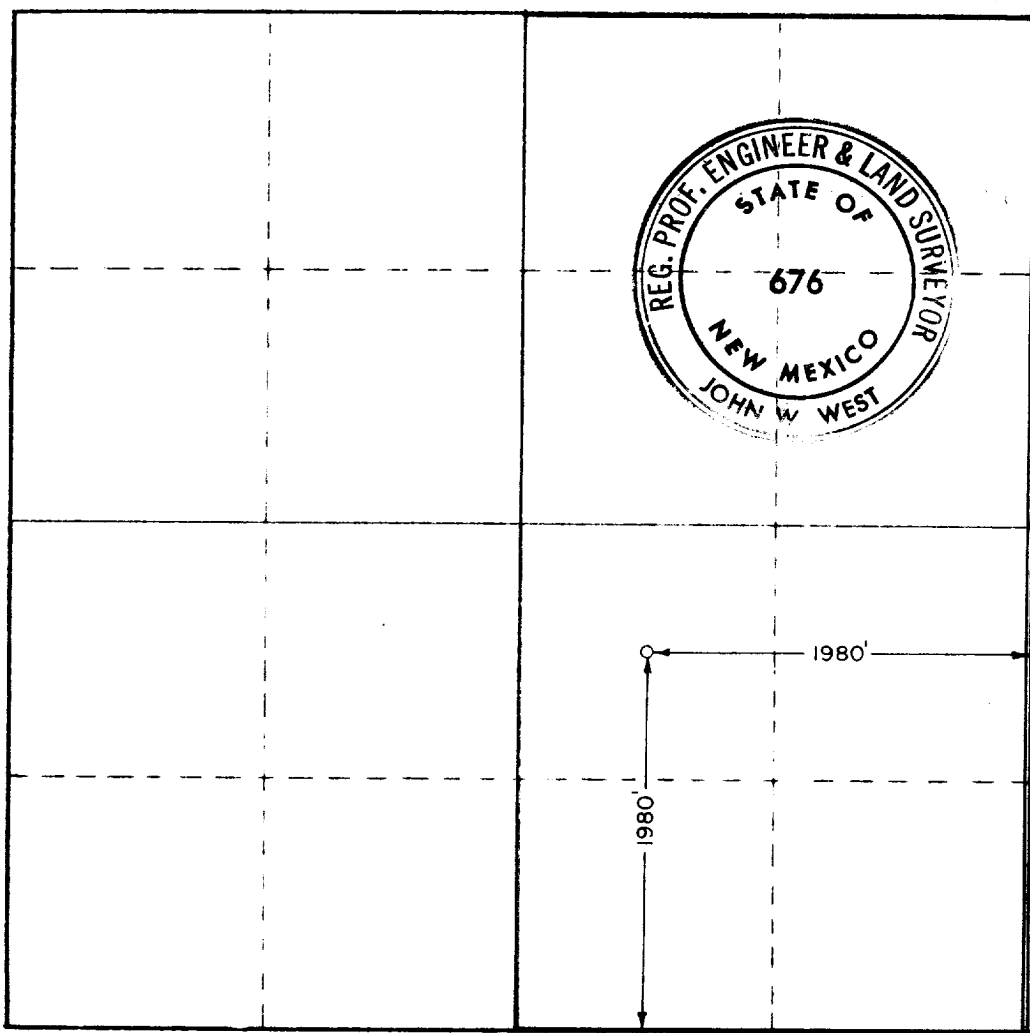
Operator TEXAS OIL AND GAS CORPORATION			Lease WILLIAMSON FEDERAL		Well No. 2
Unit Letter J	Section 9	Township 20 SOUTH	Range 29 EAST	County EDDY	
Actual Encroachment Location of Well: 1980 feet from the SOUTH line and 1980 feet from the EAST line					
Ground Level Elev. 3280.7	Producing Formation Morrow	Foot <i>Underlying Morrow</i> Burton Flat		Dedicated Acreage: 320	

1. Outline the acreage dedicated to the subject well by colored pencil or hachure marks on the plat below.
2. If more than one lease is dedicated to the well, outline each and identify the ownership thereof (both as to working interest and royalty).
3. If more than one lease of different ownership is dedicated to the well, have the interests of all owners been consolidated by communitization, unitization, force-pooling, etc?

Yes No If answer is "yes" type of consolidation _____

If answer is "no" list the owners and tract descriptions which have actually been consolidated. (Use reverse side of this form if necessary.) _____

No allowable will be assigned to the well until all interests have been consolidated (by communitization, unitization, forced-pooling, or otherwise) or until a non-standard unit, eliminating such interests, has been approved by the Commission.



CERTIFICATION

I hereby certify that the information contained herein is true and complete to the best of my knowledge and belief.

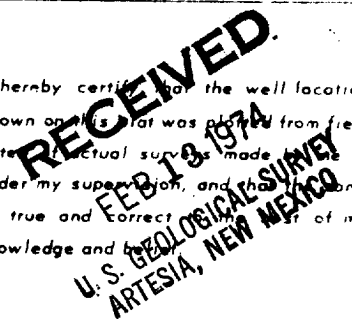
J. R. Colter
Name
J. R. Colter

Position
Petroleum Engineer

Company
Texas Oil & Gas Corp.

Date
February 12, 1974

I hereby certify that the well location shown on this plat was plotted from field notes and actual surveys made by me or under my supervision, and that the same is true and correct to the best of my knowledge and belief.



Date Surveyed
FEBRUARY 6, 1974

Registered Professional Engineer and/or Land Surveyor

John W. West
Certificate No. **676**

