

NMOCC COPY

SUBMIT IN TRIPPLICATE*

(Other Ins. on reverse)

Copy 1727
Form approved.
Budget Bureau No. 42-R1425.

UNITED STATES
DEPARTMENT OF THE INTERIOR

GEOLOGICAL SURVEY

30-015-22499

APPLICATION FOR PERMIT TO DRILL, DEEPEN, OR PLUG BACK

1a. TYPE OF WORK

DRILL

DEEPEN

PLUG BACK

b. TYPE OF WELL

OIL WELL

GAS WELL

OTHER

SINGLE ZONE

MULTIPLE ZONE

2. NAME OF OPERATOR

Inexco Oil Company ✓

3. ADDRESS OF OPERATOR

1100 Milam Bldg., Suite 1900, Houston, Texas 77002

4. LOCATION OF WELL (Report location clearly and in accordance with any State requirements)

At surface

NE 1/4 SE 1/4 Sec. 23-T21S-R22E

At proposed prod. zone

1980' FSL & 810' FEL

14. DISTANCE IN MILES AND DIRECTION FROM NEAREST TOWN OR POST OFFICE*

25 miles west, northwest from Carlsbad, New Mexico

15. DISTANCE FROM PROPOSED* LOCATION TO NEAREST PROPERTY OR LEASE LINE, FT.

(Also to nearest drlg. unit line, if any) 810

16. NO. OF ACRES IN LEASE

1120

17. NO. OF ACRES ASSIGNED TO THIS WELL

320

18. DISTANCE FROM PROPOSED* LOCATION TO NEAREST WELL, DRILLING COMPLETED, OR APPLIED FOR, ON THIS LEASE, FT.

19. PROPOSED DEPTH

9400'

20. ROTARY OR CABLE TOOLS

Rotary

21. ELEVATIONS (Show whether DF, RT, GR, etc.)

4203' Ground

22. APPROX. DATE WORK WILL START*

May 1, 1978

PROPOSED CASING AND CEMENTING PROGRAM

SIZE OF HOLE	SIZE OF CASING	WEIGHT PER FOOT	SETTING DEPTH	QUANTITY OF CEMENT
17 1/2"	13-3/8"	48#	± 200'	To Surface
12 1/4"	8-5/8"	24#	± 2000'	To Surface
7-7/8"	5-1/2"	17#	Thru deepest pay	350 sacks

(SEE ATTACHMENT "A")

Handwritten note:
1. 100' of casing
2. 100' of casing
3. 100' of casing

Gas not dedicated!

RECEIVED

MAR 16 1978

U.S. GEOLOGICAL SURVEY
ARTESIA, NEW MEXICO

IN ABOVE SPACE DESCRIBE PROPOSED PROGRAM: If proposal is to deepen or plug back, give data on present productive zone and proposed new productive zone. If proposal is to drill or deepen directionally, give pertinent data on subsurface locations and measured and true vertical depths. Give blowout preventer program, if any.

24. SIGNED J. J. Konicki TITLE Drilling Engineer DATE 3/10/78

(This space for Federal or State office use)

PERMIT NO. _____ APPROVAL DATE APR 11 1978

APPROVED BY Joe J. Lara TITLE ACTING DISTRICT ENGINEER DATE APR 11 1978

THIS APPROVAL IS RESCINDED IF OPERATIONS ARE NOT COMMENCED WITHIN 3 MONTHS.
EXPIRES JUL 11 1978

*See Instructions On Reverse Side

DECLARED WATER BASIN
CEMENT BEHIND THE CASING MUST BE CIRCULATED
13 3/4"
48.5#

NEW MEXICO OIL CONSERVATION COMMISSION
WELL LOCATION AND ACREAGE DEDICATION PLAT

Form O-117
Supersedes O-128
Effective 1-1-65

All distances must be from the outer boundaries of the Section

Inexco Oil Company			Lease <i>Majores Federal</i>			Well No. 2			
Section 1		T. 23		R. 21 South		R. 22 East		County Eddy	
Section 1980			line and 810			line East			
Ground Level 4203.5		Producing Formation <i>Manzanero</i>		Proven Reserves <i>W. Indian</i>		Estimated Acreage 320 Acres			

- Outline the acreage dedicated to the subject well by colored pencil or hachure marks on the plat below.
- If more than one lease is dedicated to the well, outline each and identify the ownership thereof (both as to working interest and royalty)
- If more than one lease of different ownership is dedicated to the well, have the interests of all owners been consolidated by communitization, unitization, force-pooling, etc?

RECEIVED

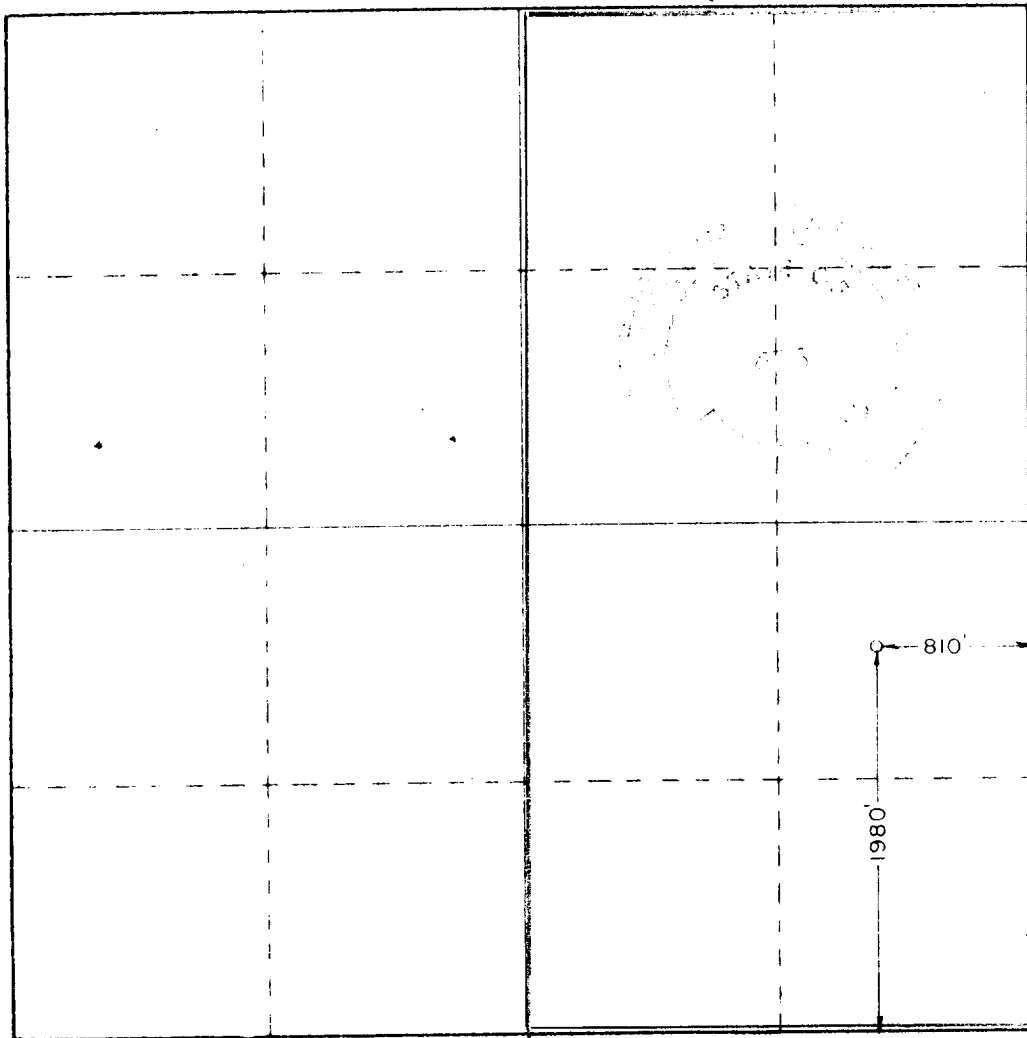
MAR 16 1978

**U. S. GEOLOGICAL SURVEY
ARTESIA, NEW MEXICO**

Yes No If answer is "yes," type of consolidation _____

If answer is "no," list the owners and tract descriptions which have actually been consolidated. (Use reverse side of this form if necessary.) _____

No allowable will be assigned to the well until all interests have been consolidated (by communitization, unitization, forced-pooling, or otherwise) or until a non-standard unit, eliminating such interests, has been approved by the Commission.



CERTIFICATION

I hereby certify that the information contained herein is true and complete to the best of my knowledge and belief

R. P. Foster
Drilling Administrator
Inexco Oil Company

I hereby certify that the well location shown on this plat was plotted from field notes of actual surveys made by me or under my supervision, and that the same is true and correct to the best of my knowledge and belief

Date Surveyed **Feb. 22, 1978**

Registered Professional Engineer
and Land Surveyor

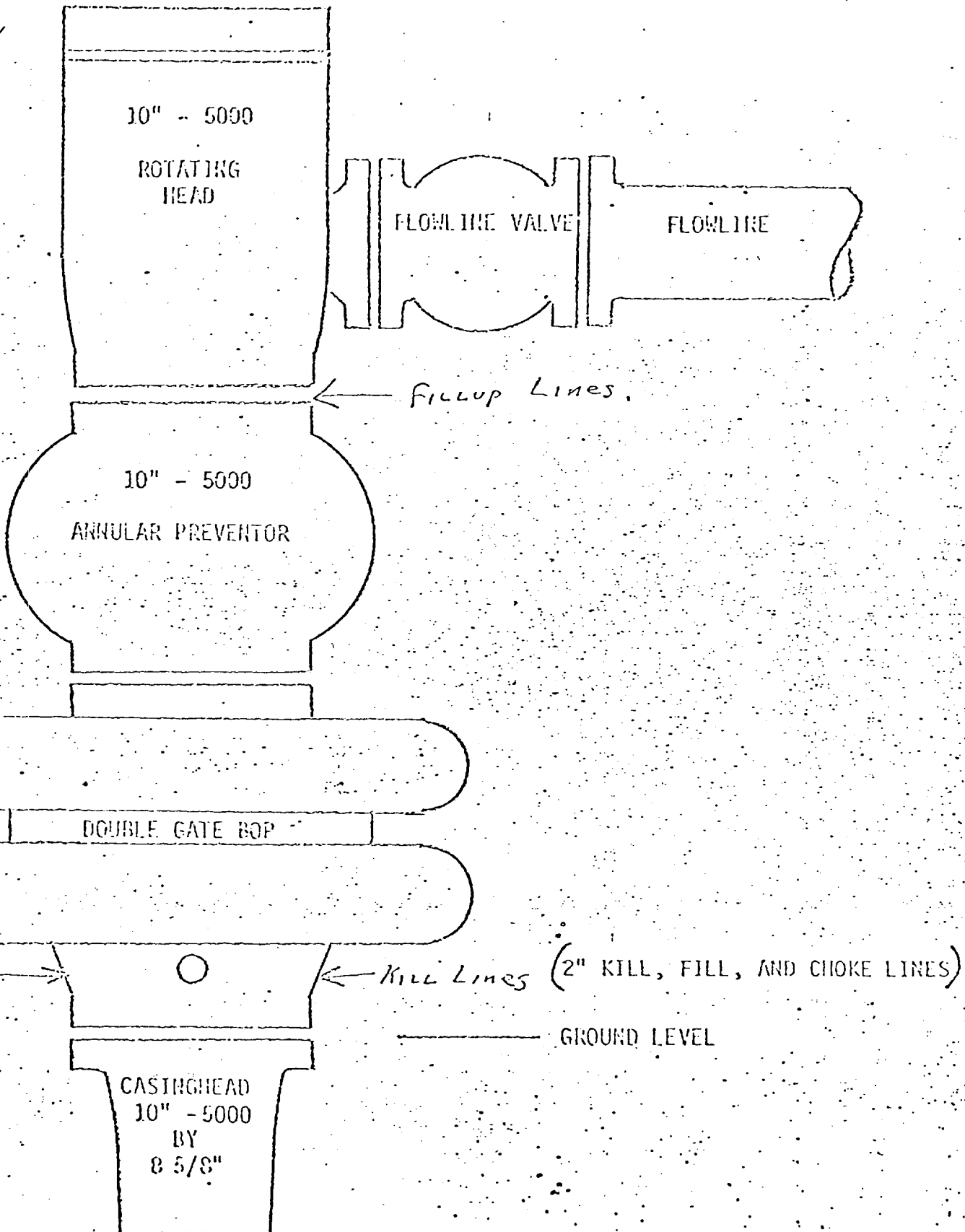
Carl West

Certificate No. **John W. West 676**
Ronald J. Eidson 3239

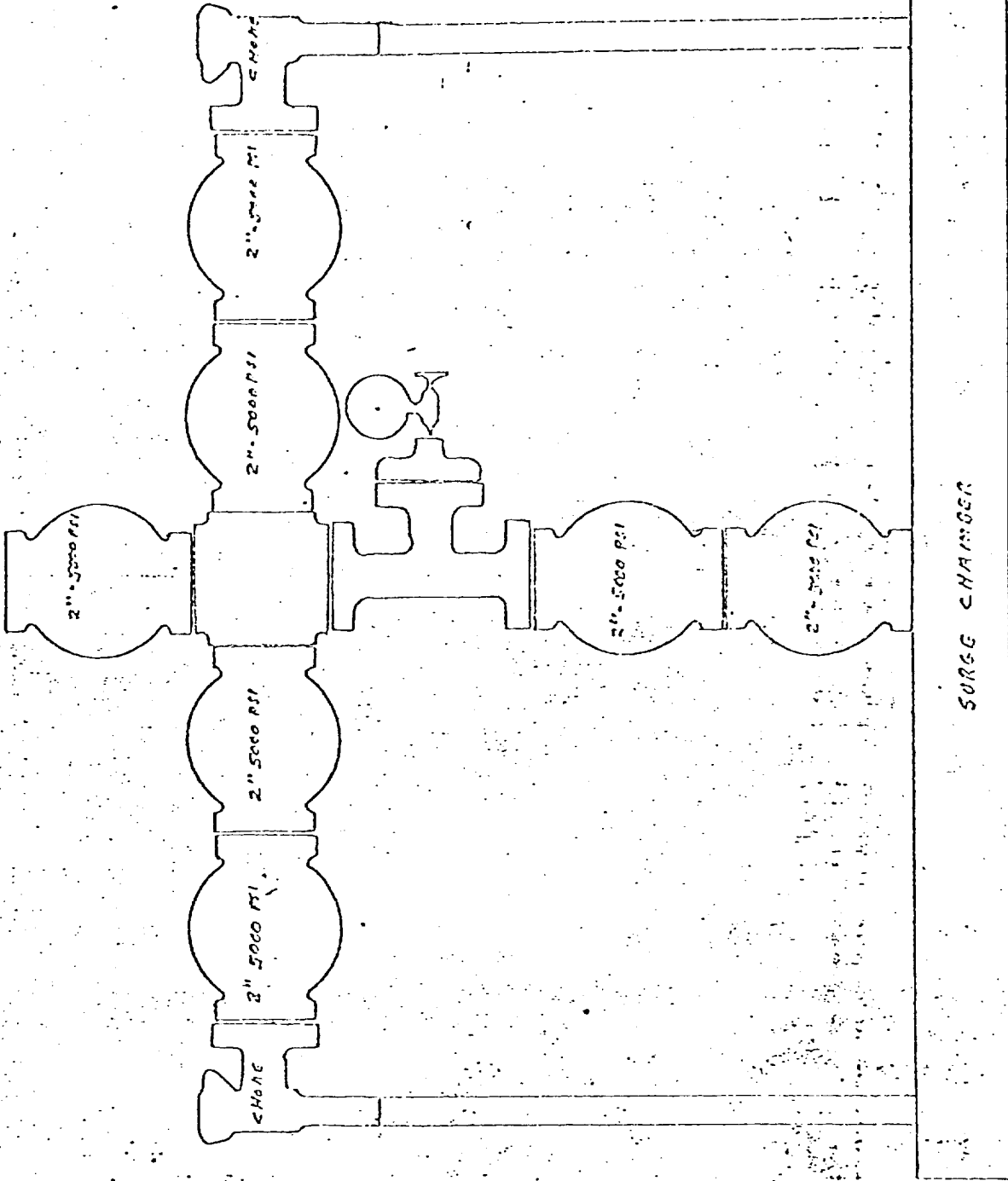


1. Surface Formation: Greyburg
2. Estimated Formation Tops: San Andres-362' (+3861), Glorieta-1848' (+2375), Upr Abo-4523' (-300), Lwr. Abo-4693' (-470), U. Wolfcamp reef-5228' (-1005), M. Wolfcamp reef-6243' (-2020), Lwr. Wolfcamp det-6698' (-2475), basal Wolfcamp det-6873' (-2650), Cisco reef-7293-7373' (3070 to 3150), Canyon limestone 7613-7693' (-3390 to 3470), Lwr Strawn-8153-8233' (3930 to -4010), Atoka-8533-8613' (-4310 to -4390), Morrow limestone-8703-8783' (-4480 to -4560), Morrow A Zone-8818-8898' (-4595 to -4675), Morrow B limestone-8853-8933' (-4630 to -4710), Morrow C Zone 9048'9128' (-4825 to -4905), TD in Miss.-9400' (-5177')
3. Estimated Depths at which oil, water, gas or other mineral bearing formations are expected to be encountered: Fresh Water 0-200', Water Sands 200-TD intermittent, Oil and Gas 200-TD intermittent. Above to be evaluated while drilling.
4. Casing Program: Surface Casing in 17½" hole, 0-200', 13 3/8-48#-H40-ST&C
Intermediate Casing in 12¼" hole, 0-2000', 8 5/8-24#-K55-ST&C
Production Casing in 7 7/8" hole, 0-7700', 5½-17#-K55-LT&C
7700-9400', 5½-17#-N80-LT&C
5. Pressure Control Equipment: 200' to 2000', 12"-900 Series. Double Hydraulic BOP Pressure Tested once with daily operational checks. 2000' to TD. 10"-5000psi WP Double Gate and Hydril. Pressure test will be done to 5000 psi on rams and 2500 psi on annular preventor. A 3" choke manifold will be installed and tested to 5000 psi at intermediate point.
6. Drilling Mud Program: 0-4800'-Fresh water with minimum weight and viscosity. 4800-TD-Brine water with sufficient viscosity to clean hole. Weight 9.0-9.3 ppg with brine and 2-3% KCl.
7. Auxillary Equipment Required: (a) Kelly cocks will be used. (b) No drill pipe floats will be allowed at any time. (c) A full opening floor stabbing valve will be on the floor. (d) Mud system will be visually monitored at all times.
8. Logging, Testing, and Coring Program: DST's as warranted by drilling time and sample shows. Logs: Dual Induction Laterolog 200-TD (2 runs), BHC Acoustic DLL and RXO 2000-TD, GR-BHC Density-Neutron 200-TD (2 runs), Dipmeter 2000-TD
9. Abnormal Conditions: No extreme abnormal of temperature, pressure, or H2S are expected.
10. Anticipated starting date: May 1, 1978, Estimate 45 drilling days and 20 completion days.
11. Productive zones will be perforated, treated and tested. Gas will be flared during testing periods. Produced water during testing will be contained in the unlined drilling reserve pit. All possible oil will be stored and sold.

Majores Fed. #2
NE SE Sec. 23-T21S-R22E
Eddy County, New Mexico



FROM
WELL



TO SEPARATOR

SURGE CHAMBER

BOP REQUIREMENTS

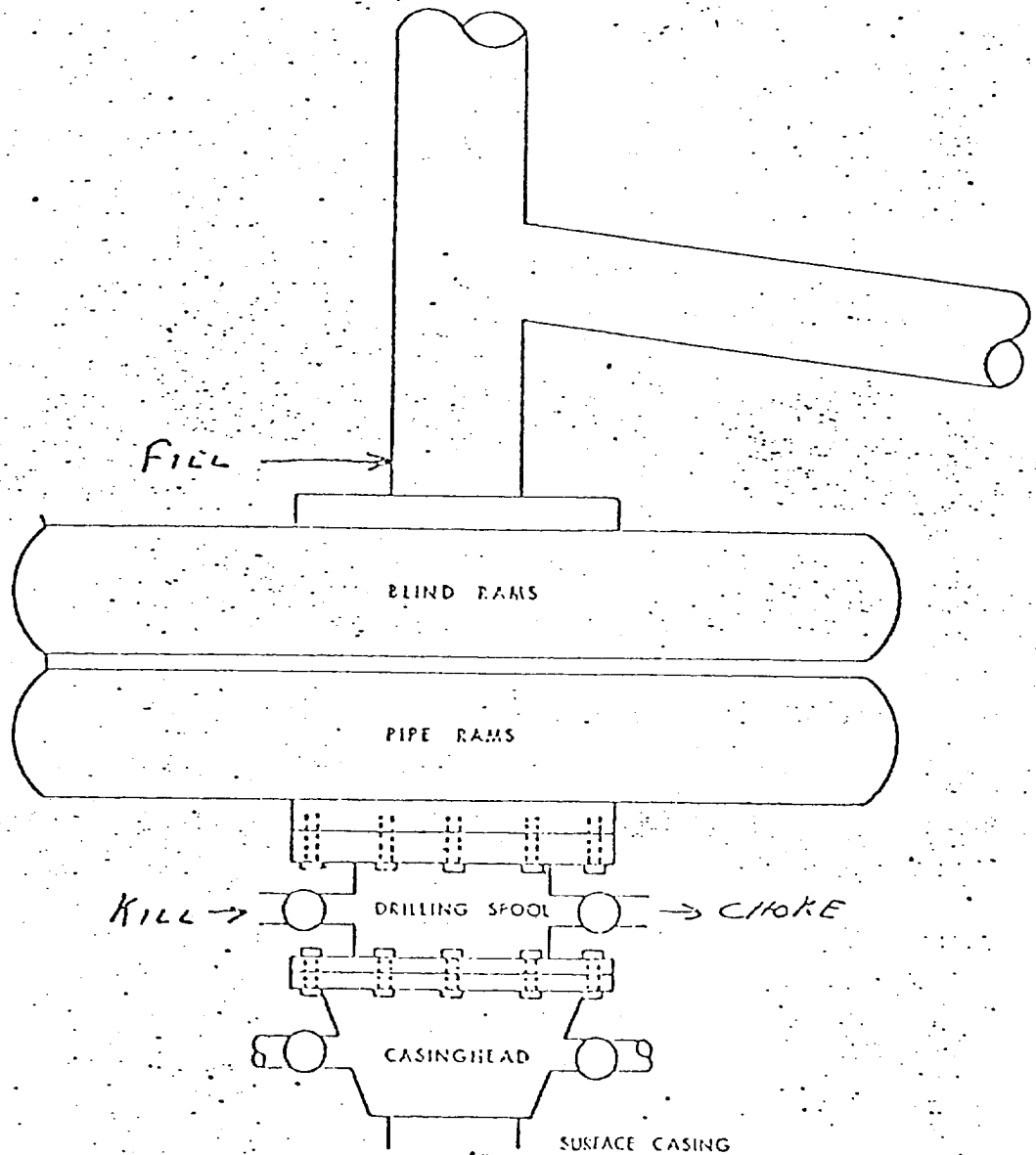
MINIMUM REQUIREMENTS

CASINGHEAD - HURCO CHOICE WITH CONSIDERATION OF DEPTH & PRESSURE

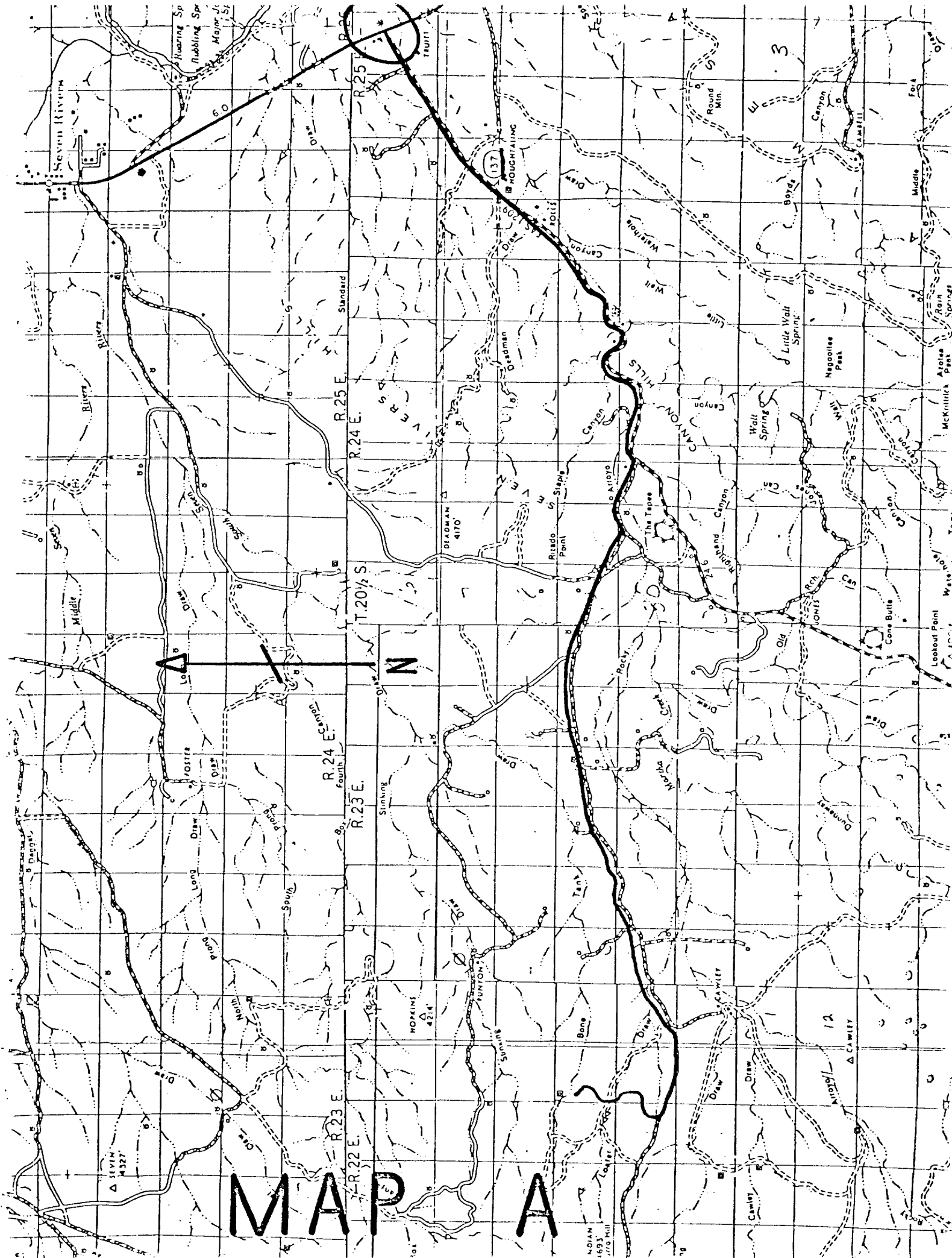
DRILLING SPOOL - 12" - 3000' TOP & BOTTOM WITH 2 - 2" - 3000 PSI OUTLETS W/ 2-2" 3000 PSI VALVES

FLOWOUT PREVENTOR - 12" - 3000 PSI W/ DOUBLE GATE HYDRAULICALLY OPERATED WITH 2 REMOTE STATIONS & HANDWHEELS

BLIND RAMS WILL BE ON TOP



MAP A



NOIAN
4693'
770 Hill

R. 23 E.

R. 22 E.

R. 23 E.

R. 24 E.

R. 25 E.

R. 24 E.

R. 23 E.

R. 24 E.

R. 25 E.

R. 24 E.

R. 23 E.

R. 24 E.

R. 25 E.

R. 24 E.

R. 23 E.

R. 24 E.

R. 25 E.

R. 24 E.

R. 23 E.

R. 24 E.

R. 25 E.

R. 24 E.

R. 23 E.

R. 24 E.

R. 25 E.

R. 24 E.

R. 23 E.

R. 24 E.

R. 25 E.

R. 24 E.

R. 23 E.

R. 24 E.

R. 25 E.

R. 24 E.

R. 23 E.

R. 24 E.

R. 25 E.

R. 24 E.

R. 23 E.

R. 24 E.

R. 25 E.

R. 24 E.

R. 23 E.

R. 24 E.

R. 25 E.

R. 24 E.

R. 23 E.

R. 24 E.

R. 25 E.

R. 24 E.

R. 23 E.

R. 24 E.

R. 25 E.

R. 24 E.

R. 23 E.

R. 24 E.

R. 25 E.

R. 24 E.

R. 23 E.

R. 24 E.

R. 25 E.

R. 24 E.

R. 23 E.

R. 24 E.

R. 25 E.

R. 24 E.

R. 23 E.

R. 24 E.

R. 25 E.

R. 24 E.

R. 23 E.

R. 24 E.

R. 25 E.

R. 24 E.

R. 23 E.

R. 24 E.

R. 25 E.

R. 24 E.

R. 23 E.

R. 24 E.

R. 25 E.

R. 24 E.

R. 23 E.

R. 24 E.

R. 25 E.

R. 24 E.

R. 23 E.

R. 24 E.

R. 25 E.

R. 24 E.

R. 23 E.

R. 24 E.

R. 25 E.

R. 24 E.

R. 23 E.

R. 24 E.

R. 25 E.

R. 24 E.

R. 23 E.

R. 24 E.

R. 25 E.

R. 24 E.

R. 23 E.

R. 24 E.

R. 25 E.

R. 24 E.

R. 23 E.

R. 24 E.

R. 25 E.

R. 24 E.

R. 23 E.

R. 24 E.

R. 25 E.

R. 24 E.

R. 23 E.

R. 24 E.

R. 25 E.

R. 24 E.

R. 23 E.

R. 24 E.

R. 25 E.

R. 24 E.

R. 23 E.

R. 24 E.

R. 25 E.

R. 24 E.

R. 23 E.

R. 24 E.

R. 25 E.

R. 24 E.

R. 23 E.

R. 24 E.

R. 25 E.

R. 24 E.

R. 23 E.

R. 24 E.

R. 25 E.

R. 24 E.

R. 23 E.

R. 24 E.

R. 25 E.

R. 24 E.

R. 23 E.

R. 24 E.

R. 25 E.

R. 24 E.

R. 23 E.

R. 24 E.

R. 25 E.

R. 24 E.

R. 23 E.

R. 24 E.

R. 25 E.

R. 24 E.

R. 23 E.

R. 24 E.

R. 25 E.

R. 24 E.

R. 23 E.

R. 24 E.

R. 25 E.

R. 24 E.

R. 23 E.

R. 24 E.

R. 25 E.

R. 24 E.

R. 23 E.

R. 24 E.

R. 25 E.

R. 24 E.

R. 23 E.

R. 24 E.

R. 25 E.

R. 24 E.

R. 23 E.

R. 24 E.

R. 25 E.

R. 24 E.

R. 23 E.

R. 24 E.

R. 25 E.

R. 24 E.

R. 23 E.

R. 24 E.

R. 25 E.

R. 24 E.

R. 23 E.

R. 24 E.

R. 25 E.

R. 24 E.

R. 23 E.

R. 24 E.

R. 25 E.

R. 24 E.

R. 23 E.

R. 24 E.

R. 25 E.

R. 24 E.

R. 23 E.

R. 24 E.

R. 25 E.

R. 24 E.

R. 23 E.

R. 24 E.

R. 25 E.

R. 24 E.

R. 23 E.

R. 24 E.

R. 25 E.

R. 24 E.

R. 23 E.

R. 24 E.

R. 25 E.

R. 24 E.

R. 23 E.

R. 24 E.

R. 25 E.

R. 24 E.

R. 23 E.

R. 24 E.

R. 25 E.

R. 24 E.

R. 23 E.

R. 24 E.

R. 25 E.

R. 24 E.

R. 23 E.

R. 24 E.

R. 25 E.

R. 24 E.

R. 23 E.

R. 24 E.

R. 25 E.

R. 24 E.

R. 23 E.

R. 24 E.

R. 25 E.

R. 24 E.

R. 23 E.

R. 24 E.

R. 25 E.

R. 24 E.

R. 23 E.

R. 24 E.

R. 25 E.

R. 24 E.

R. 23 E.

R. 24 E.

R. 25 E.

R. 24 E.

R. 23 E.

R. 24 E.

R. 25 E.

R. 24 E.

R. 23 E.

R. 24 E.

R. 25 E.

R. 24 E.

R. 23 E.

R. 24 E.

R. 25 E.

R. 24 E.

R. 23 E.

R. 24 E.

R. 25 E.

R. 24 E.

R. 23 E.

R. 24 E.

R. 25 E.

R. 24 E.

R. 23 E.

R. 24 E.

R. 25 E.

R. 24 E.

R. 23 E.

R. 24 E.

R. 25 E.

R. 24 E.

R. 23 E.

R. 24 E.

R. 25 E.

R. 24 E.

R. 23 E.

R. 24 E.

R. 25 E.

R. 24 E.

R. 23 E.

R. 24 E.

R. 25 E.

R. 24 E.

R. 23 E.

R. 24 E.

R. 25 E.

R. 24 E.

R. 23 E.

R. 24 E.

R. 25 E.

R. 24 E.

R. 23 E.

R. 24 E.

R. 25 E.

R. 24 E.

R. 23 E.

R. 24 E.

R. 25 E.

R. 24 E.

R. 23 E.

R. 24 E.

R. 25 E.

R. 24 E.

R. 23 E.

R. 24 E.

R. 25 E.

R. 24 E.

R. 23 E.

R. 24 E.

R. 25 E.

R. 24 E.

R. 23 E.

R. 24 E.

R. 25 E.

R. 24 E.

R. 23 E.

R. 24 E.

R. 25 E.

R. 24 E.

R. 23 E.

R. 24 E.

R. 25 E.

R. 24 E.

R. 23 E.

R. 24 E.

R. 25 E.

R. 24 E.

R. 23 E.

R. 24 E.

R. 25 E.

R. 24 E.

R. 23 E.

R. 24 E.

R. 25 E.

R. 24 E.

R. 23 E.

R. 24 E.

R. 25 E.

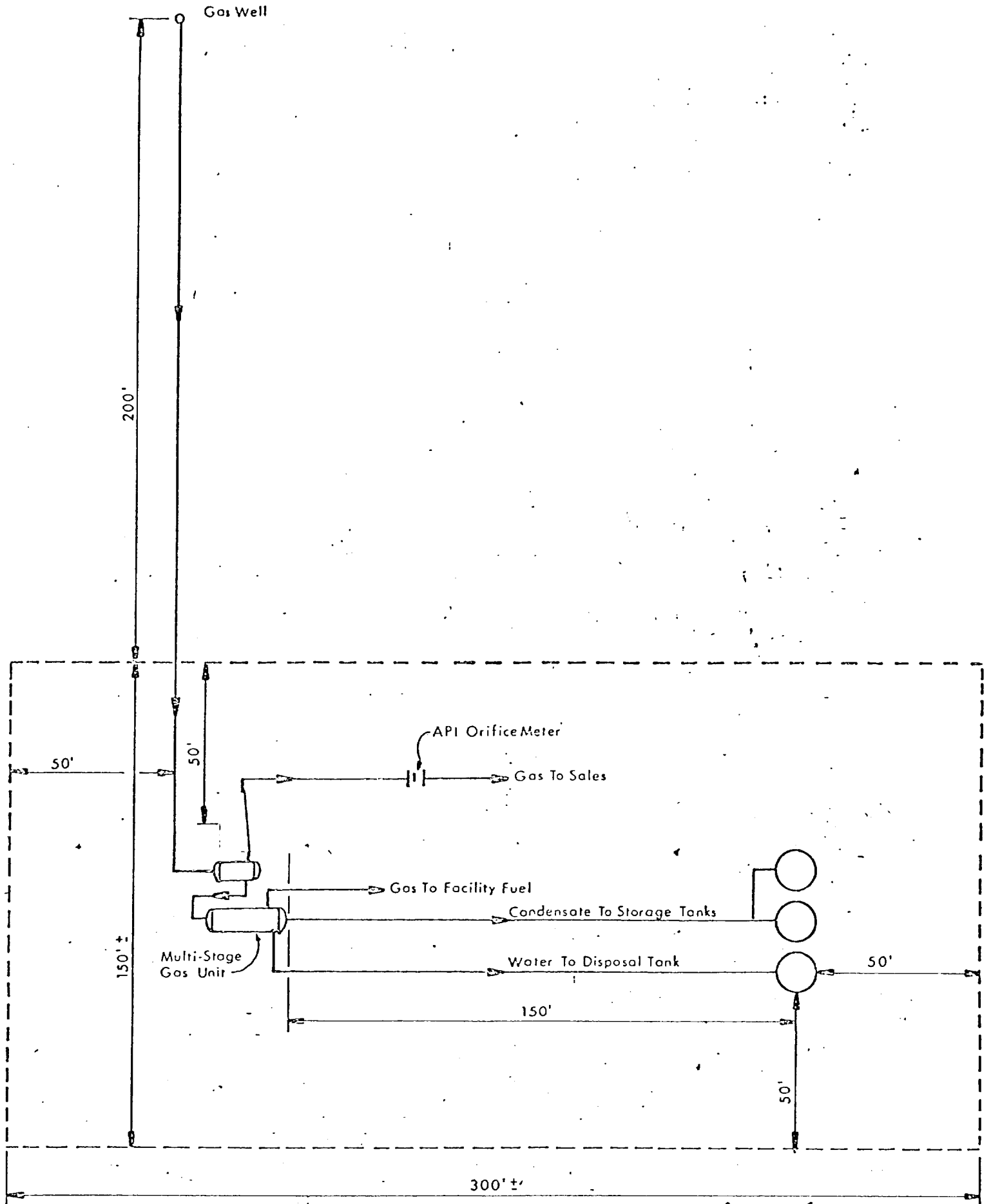
R. 24 E.

R. 23 E.

R. 24 E.

R. 25 E.

R. 24 E.



DIACRAM 'E'