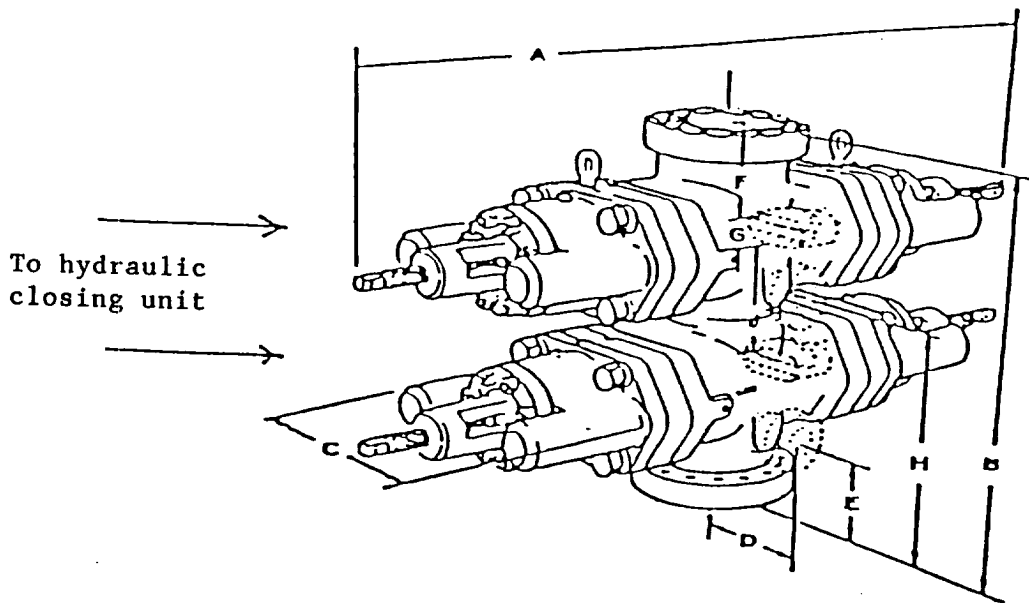


## EXHIBIT "E"

### BOP Diagram

A flanger type Bell lead will be used on this well. After the 13-3/8" casing has been set and cemented, an 11" double ram BOP will be put on and kept in service for the life of this well.

After 8-5/8" intermediate casing has been set and cement placed around the bottom of this pipe, the 13-3/8" casing will be orange peeled into the 8-5/8" casing and then an 11" double ram BOP, as shown below will be put on the hole. This blowout preventer will be connected to a hydraulically controlled closing unit. The pressure rating on this BOP is 3000#, and will have blank and 5-1/2" pipe.



J.C. Williamson  
T.O.G. Federal # 5  
2310' FNL & 1650' FEL  
Sec. 16, T-20-S, R-29-E  
Eddy County, New Mexico