

180
12/6/90

NEW MEXICO OIL CONSERVATION COMMISSION
WELL LOCATION AND ACREAGE DEDICATION PLAT

Form C-102
Supersedes C-128
Effective 1-1-65

All distances must be from the outer boundaries of the Section.

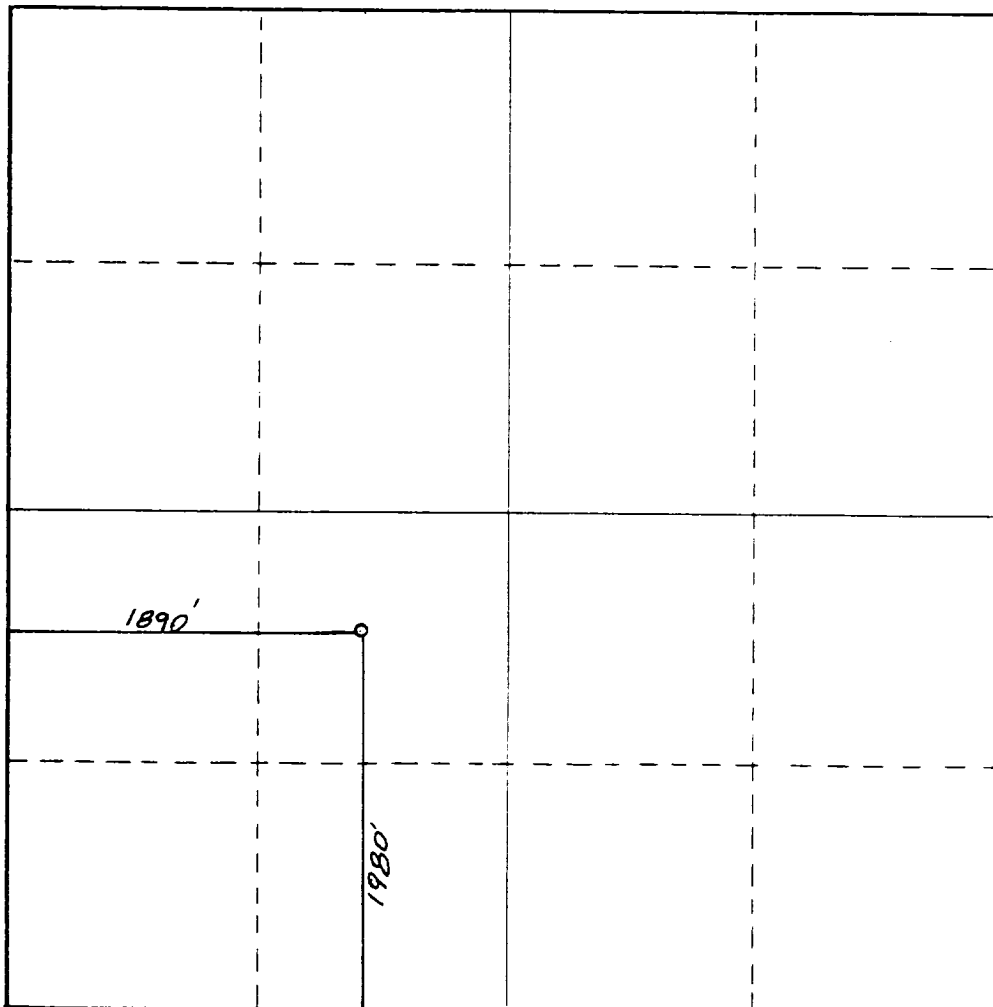
Operator CHI OPERATING, INC.			Lease Wiser Com		Well No. 1
Unit Letter K	Section 9	Township 21 South	Range 26 East	County Eddy County, N.M.	
Actual Footage Location of Well: 1980 feet from the South line and 1890 feet from the West line					
Ground Level Elev. 3226.	Producing Formation DELAWARE		Pool WILDCAT	Dedicated Acreage: 40 Acres	

1. Outline the acreage dedicated to the subject well by colored pencil or hachure marks on the plat below.
2. If more than one lease is dedicated to the well, outline each and identify the ownership thereof (both as to working interest and royalty).
3. If more than one lease of different ownership is dedicated to the well, have the interests of all owners been consolidated by communitization, unitization, force-pooling, etc?

☐ Yes ☐ No If answer is "yes," type of consolidation _____

If answer is "no," list the owners and tract descriptions which have actually been consolidated. (Use reverse side of this form if necessary.) _____

No allowable will be assigned to the well until all interests have been consolidated (by communitization, unitization, forced-pooling, or otherwise) or until a non-standard unit, eliminating such interests, has been approved by the Commission.



CERTIFICATION

I hereby certify that the information contained herein is true and complete to the best of my knowledge and belief.

David H. Harrison

Name

DAVID H. HARRISON

Position

PRESIDENT

Company

CHI OPERATING, INC.

Date

05/25/90

I hereby certify that the well location shown on this plat was plotted from field notes of actual surveys made by me or under my supervision, and that the same is true and correct to the best of my knowledge and belief.

DAN R. REDDY
REGISTERED PROFESSIONAL ENGINEER
NEW MEXICO
5412

Date Surveyed

May 21, 1990

Registered Professional Engineer
and/or Land Surveyor

Dan R. Reddy

Certificate No.

NM PE&LS NO. 5412

0 330 660 990 1320 1650 1980 2310 2640 2000 1500 1000 500 0