

1 / MEXICO OIL CONSERVATION COMMISS
WELL LOCATION AND ACREAGE DEDICATION PLAT

Form C-102
 Supersedes C-128
 Effective 1-1-65

All distances must be from the outer boundaries of the Section.

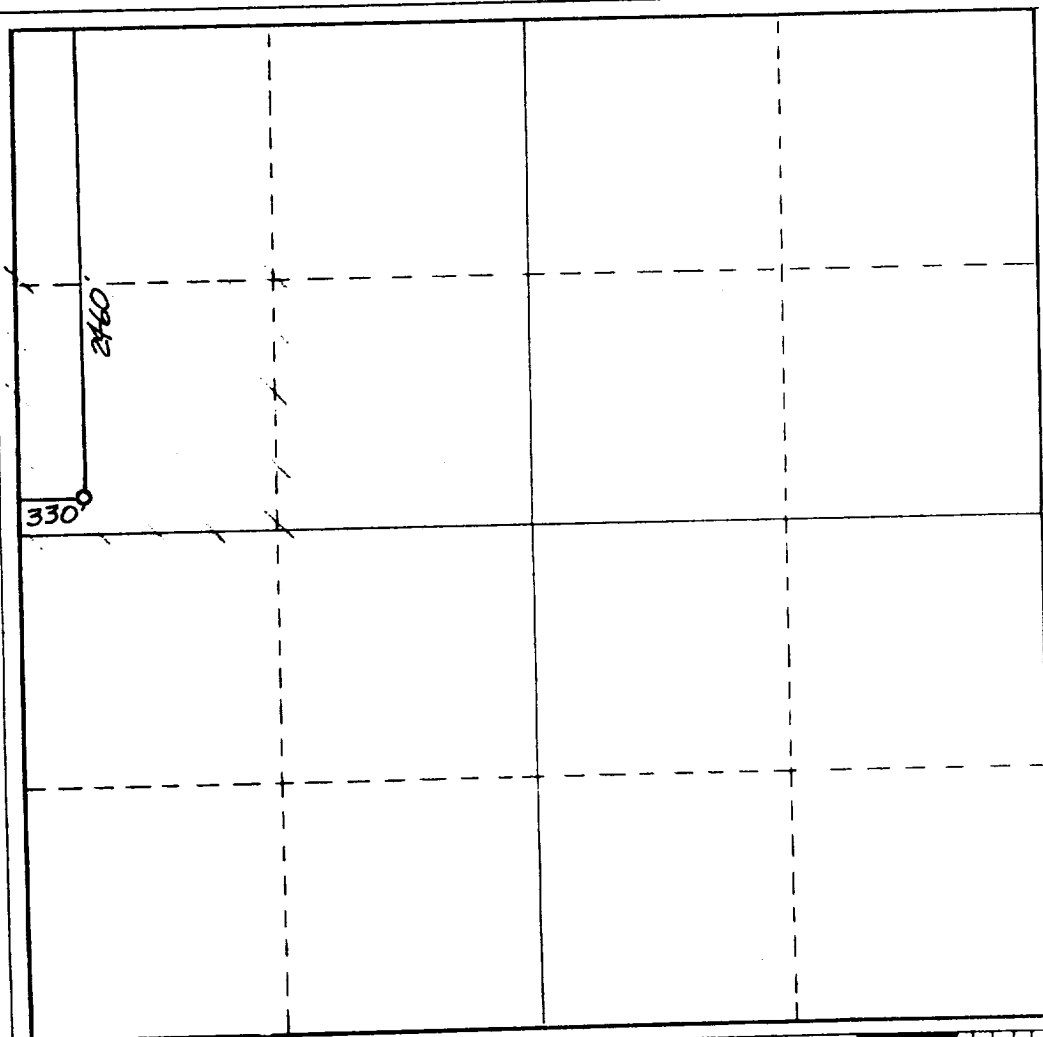
Operator SIETE OIL & GAS CORPORATION			Lease Blackfoot Federal		Well No. 1
Unit Letter E	Section 17	Township 22 South	Range 25 East	County Eddy County, N.M.	
Actual Footage Location of Well: 2460 feet from the North line and 330 feet from the West line					
Ground Level Elev. 3828.	Producing Formation Delaware	Pool Wildcat	Dedicated Acreage: 40 Acres		

1. Outline the acreage dedicated to the subject well by colored pencil or hachure marks on the plat below.
2. If more than one lease is dedicated to the well, outline each and identify the ownership thereof (both as to working interest and royalty).
3. If more than one lease of different ownership is dedicated to the well, have the interests of all owners been consolidated by communitization, unitization, force-pooling, etc?

☐ Yes ☐ No If answer is "yes," type of consolidation _____

If answer is "no," list the owners and tract descriptions which have actually been consolidated. (Use reverse side of this form if necessary.) _____

No allowable will be assigned to the well until all interests have been consolidated (by communitization, unitization, forced-pooling, or otherwise) or until a non-standard unit, eliminating such interests, has been approved by the Commission.



CERTIFICATION

I hereby certify that the information contained herein is true and complete to the best of my knowledge and belief.

Harold D. Justice

Name

Harold D. Justice

Position

V.P. Drilling & Production

Company

Siete Oil and Gas Corporation

Date

April 2, 1990

Date Surveyed

March 14, 1990

Registered Professional Engineer
 and/or Land Surveyor

Dan R. Reddy

Certificate No.

NM PE&LS NO. 5412

