

DISTRICT I

P. O. Box 1980
Hobbs, NM 88240

DISTRICT II

P. O. Drawer DD
Artesia, NM 88210

DISTRICT III

1000 Rio Brazos Rd
Aztec, NM 87410

OIL CONSERVATION DIVISION

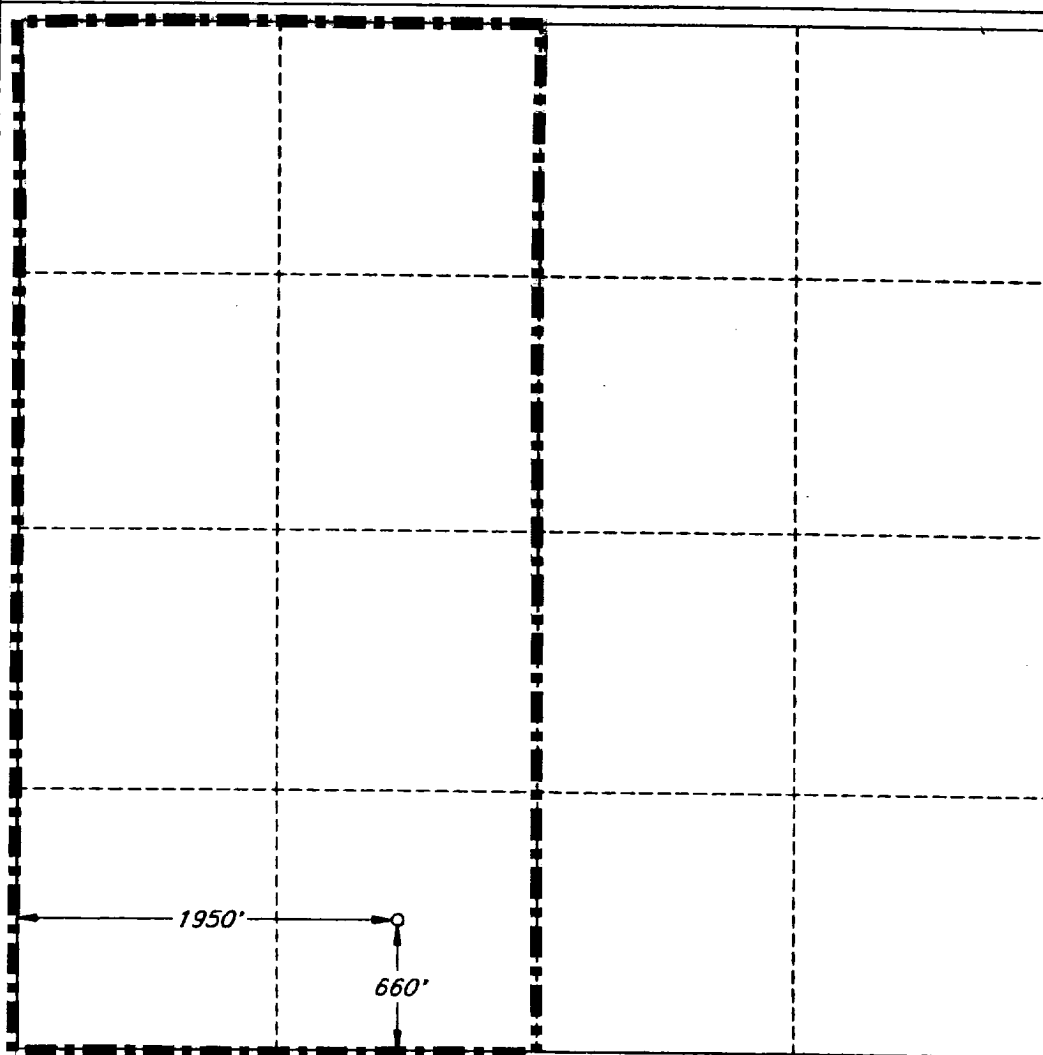
P. O. Box 2088
Santa Fe, New Mexico 87504-2088

WELL LOCATION AND ACREAGE DEDICATION PLAT

All distances must be from the outer boundaries of the section.

Operator SANTA FE ENERGY RESOURCES, INC.			Lease JONES CANYON '4' FEDERAL		Well No. 1
Unit Letter N	Section 4	Township 22 SOUTH	Range 24 EAST, N.M.P.M.	County EDDY	
Actual Footage Location of Well					
880 feet from the SOUTH line and		1200 feet from the WEST line			
Ground Level Elev. 4197'	Producing Formation Upper Penn		Pool Indian Basin (Upper Penn) Assoc.		320 Acres

1. Outline the acreage dedicated to the subject well by colored pencil or hatchure marks on the plat below.
2. If more than one lease is dedicated to the well, outline each and identify the ownership thereof (both as to working interest and royalty).
3. If more than one lease of different ownership is dedicated to the well, have the interest of all the owners been consolidated by communitization, unitization, forced-pooling, etc.?
☐ Yes ☐ No If answer is "yes", type of consolidation _____
If the answer is "no", list the owners and tract descriptions which have actually been consolidated. (Use the reverse side of this form if necessary.) _____
No allowable will be assigned to the well until all interests have been consolidated (by communitization, unitization, forced-pooling, or otherwise) or until a non-standard unit, eliminating such interest, has been approved by the division.



OPERATOR CERTIFICATION

I hereby certify that the information herein is true and complete to the best of my knowledge and belief.

Signature *Terry McCullough*

Printed Name
Terry McCullough

Position
Sr. Production Clerk
Company
Santa Fe Energy Resources

Date
August 17, 1999

SURVEYOR CERTIFICATION

I hereby certify that the well location shown on this plat was plotted from field notes of actual surveys made by me or under my supervision, and that the same is true and correct to the best of my knowledge and belief.

Date Surveyed **MARCH 1, 1998**

Signature and Seal of Professional Surveyor
V. L. BEZNER
V. L. BEZNER
NO. 7920
Certified LAND SURVEYOR
V. L. BEZNER R.P.S. #7920

V.H.B. / 32019 / 51NE