

FIGURE K6-1. The schematic sketch of an accumulator system shows required and optional components.

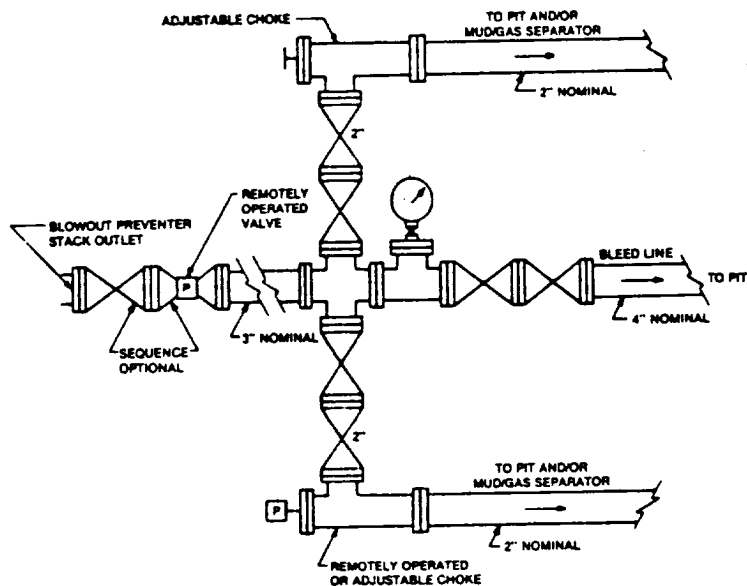


FIGURE K4-2. Typical choke manifold assembly for 5M rated working pressure service — surface installation.

EXHIBIT "E-1"
MARALO INC.
CHOKE MANIFOLD & CLOSING UNIT
D.S. "26" FEDERAL # 1
1783' FNL & 1259' FEL SEC. 26
T20S-R26E
EDDY CO. NM.