

District I
PO Box 1980, Hobbs, NM 88241-1980

District II
PO Drawer DD, Artesia, NM 88211-0719

District III
1000 Rio Brazos Rd., Aztec, NM 87410

District IV
PO Box 2088, Santa Fe, NM 87504-2088

State of New Mexico
Energy, Minerals & Natural Resources Department

OIL CONSERVATION DIVISION
PO Box 2088
Santa Fe, NM 87504-2088

Form C-101
Revised February 10, 1994
Instructions on back
Submit to Appropriate District Office
State Lease - 6 Copies
Fee Lease - 5 Copies

☐ AMENDED REPORT

APPLICATION FOR PERMIT TO DRILL, RE-ENTER, DEEPEN, PLUGBACK, OR ADD A ZONE

² Operator Name and Address. Devon Energy Corporation (Nevada) 1500 Mid America Tower 20 N. Broadway Oklahoma City, OK 73102-8260		¹ OGRID Number 6137
		³ API Number 30-015-28497
⁴ Property Code 3446	⁵ Property Name Cactus State	⁶ Well No. 11

⁷ Surface Location

UL or lot no. 0 L	Section 16	Township 21S	Range 26E	Lot Ids	Feet from the 2310	North/South line South	Feet from the 990	East/West line West	County Eddy
----------------------	---------------	-----------------	--------------	---------	-----------------------	---------------------------	----------------------	------------------------	----------------

⁸ Proposed Bottom Hole Location If Different From Surface

UL or lot no. 0 L	Section 16	Township 21S	Range 26E	Lot Ids	Feet from the 2310	North/South line South	Feet from the 990	East/West line West	County Eddy
----------------------	---------------	-----------------	--------------	---------	-----------------------	---------------------------	----------------------	------------------------	----------------

⁹ Proposed Pool 1 Catclaw Draw Delaware, East (10500)	¹⁰ Proposed Pool 2 Pst ID-1 5-12-95 Drill Hole 8 API
---	--

¹¹ Work Type Code N	¹² Well Type Code O	¹³ Cable/Rotary R	¹⁴ Lease Type Code S	¹⁵ Ground Level Elevation 3260
¹⁶ Multiple No	¹⁷ Proposed Depth 3600	¹⁸ Formation Delaware	¹⁹ Contractor To be Selected	²⁰ Spud Date 6/15/95

²¹ Proposed Casing and Cement Program

Hole Size	Casing Size	Casing weight/feet	Setting Depth	Sacks of Cement	Estimated TOC
17-1/2"	13-3/8"	48	350	400	Surface
12-1/4"	8-5/8"	24	2100 2200	950	Surface
7-7/8"	5-1/2"	15.5	3600	400	Surface

²² Describe the proposed program. If this application is to DEEPEN or PLUG BACK give the data on the present productive zone and casing near the productive zone. Describe the blowout prevention program, if any. Use additional sheets if necessary.

Devon plans to drill this well to a total depth of 3600 feet and complete it as a Delaware development well. If it is deemed non-commercial, then it will be plugged and abandoned in accordance with the rules and regulations established by the New Mexico CD. Blowout prevention equipment will be installed while drilling the intermediate and production holes.

OIL CON. DIV.
DIST. 2

²³ I hereby certify that the information given above is true and complete to the best of my knowledge and belief.		OIL CONSERVATION DIVISION	
Signature: <i>Charles W. Horsman</i>		Approved by: ORIGINAL SIGNED BY TIM W. GUM	
Printed name: Charles W. Horsman		Title: DISTRICT II SUPERVISOR	
Title: District Engineer		Approval Date: MAY 9 1995	Expiration Date: 11-9-95
Date: 4/25/95	Phone: (405) 552-4508	Conditions of Approval: Notify N.M.O.C.C. in sufficient time to witness cementing the 13 3/8" 8 5/8" casing	
		Attached <input type="checkbox"/>	

C-101 Instruction

Measurements and dimensions are to be in feet/inches. Well location will refer to the New Mexico Principal Meridian.

IF THIS IS AN AMENDED REPORT CHECK THE BOX
LABELED "AMENDED REPORT" AT THE TOP OF THIS
DOCUMENT.

1. Operator's OGRID number. If you do not have one it will be assigned and filled in by District office.
2. Operator's name and address
3. API number of this well. If this is a new drill the OCD will assign the number and fill this in.
4. Property code. If this is anew property the OCD will assign the number and fill it in.
5. Property name that used to be called 'well name'.
6. The number of this well on the property.
7. The surveyed location of this well New Mexico Principal Meridian NOTE: If the United States government survey designates a Lot Number for this location use that number in the 'UL or lot no.' box. Otherwise use the OCD Unit Letter.
8. The proposed bottom hole location this well at TD
- 9 and 10. The proposed pool(s) to which this well is being drilled.
11. Work type code from the following table:

N	New well
E	Re-entry
D	Drill deeper
P	Plugback
A	Add a zone
12. Well type code from the following table:

O	Single oil completion
G	Single gas completion
M	Multiple completion
I	Injection well
S	SWD well
W	Water supply well
C	Carbon dioxide well
13. Cable or rotary drilling code

C	Propose to cable tool drill
R	Propose to rotary drill
14. Lease type code from the following table:

F	Federal
S	State
P	Private
N	Navajo
J	Jicarilla
U	Ute
I	Other Indian tribe
15. Ground level elevation above sea level
16. Intend to multiple complete? Yes or No
17. Proposed total depth of this well
18. Geologic formation at TD
19. Name of the intended drilling company if known.
20. Anticipated spud date.
21. Proposed hole size ID inches, proposed casing OD inches, casing weight in pounds per foot, setting depth of the casing or depth and top of liner, proposed cementing volume, and estimated top of cement.
22. Brief description of the proposed drilling program and BOP program. Attach additional sheets if necessary.
23. The signature, printed name, and title of the person authorized to make this report. The date this report was signed and the telephone number to call for questions about this report.

DISTRICT I
P.O. Box 1980, Hobbs, NM 88240

State of New Mexico
Energy, Minerals and Natural Resources Department

Form C-102
Revised February 10, 1994
Instruction on back
Submit to Appropriate District Office
State Lease - 4 Copies
Fee Lease - 3 Copies

DISTRICT II
P.O. Drawer DD, Artesia, NM 88210

OIL CONSERVATION DIVISION

DISTRICT III
1000 Rio Brazos Rd., Aztec, NM 87410

P.O. Box 2088
Santa Fe, New Mexico 87504-2088

☐ AMENDED REPORT

WELL LOCATION AND ACREAGE DEDICATION PLAT

API Number 30-015-28497	Pool Code 10500	Pool Name Catclaw Draw, Delaware, East
Property Code	Property Name CACTUS STATE	Well Number 11
OGRID No.	Operator Name DEVON ENERGY CORP.	Elevation 3260

Surface Location

UL or lot No. L	Section 16	Township 21 S	Range 26 E	Lot Idn	Feet from the 2310	North/South line SOUTH	Feet from the 990	East/West line WEST	County EDDY
---------------------------	----------------------	-------------------------	----------------------	---------	------------------------------	----------------------------------	-----------------------------	-------------------------------	-----------------------

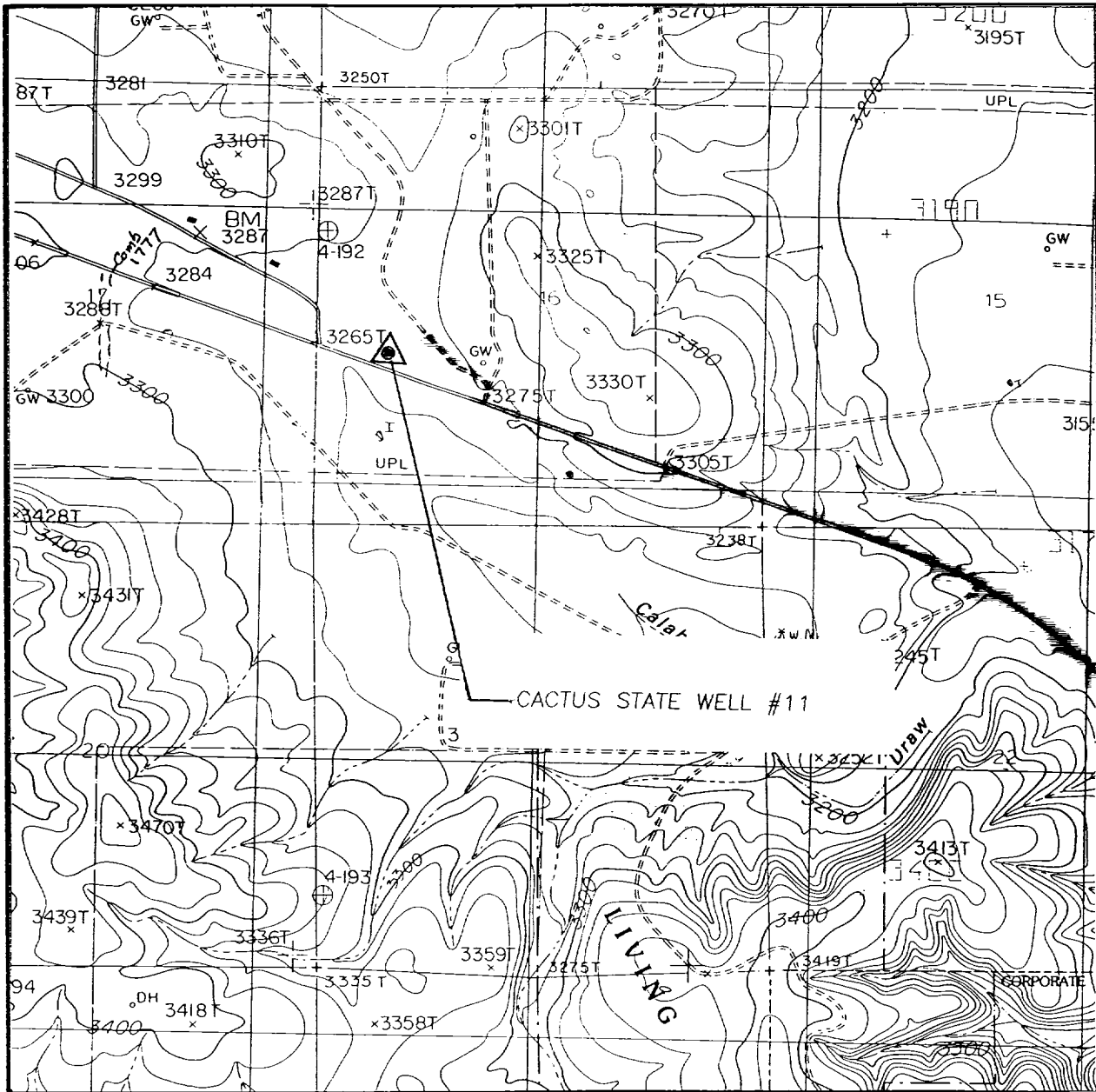
Bottom Hole Location If Different From Surface

UL or lot No.	Section	Township	Range	Lot Idn	Feet from the	North/South line	Feet from the	East/West line	County
Dedicated Acres 40	Joint or Infill	Consolidation Code	Order No.						

NO ALLOWABLE WILL BE ASSIGNED TO THIS COMPLETION UNTIL ALL INTERESTS HAVE BEEN CONSOLIDATED
OR A NON-STANDARD UNIT HAS BEEN APPROVED BY THE DIVISION

				OPERATOR CERTIFICATION I hereby certify the the information contained herein is true and complete to the best of my knowledge and belief. Signature Charles W. Horsman Printed Name District Engineer Title April 25, 1995 Date	
				SURVEYOR CERTIFICATION I hereby certify that the well location shown on this plat was plotted from field notes of actual surveys made by me or under my supervision and that the same is true and correct to the best of my belief. MARCH 24, 1995 Date Surveyed Signature & Seal of Professional Surveyor W.O. Num. 95-11-0455	
				Certificate No. JOHN-W. WEST 676 RONALD J. EIDSON 3239 GARY EIDSON 12641	

LOCATION VERIFICATION MAP



SCALE: 1" = 2000'

CONTOUR INTERVAL - 20'
W.S.S.1.

SEC. 16 TWP. 21-S RGE. 26-E

SURVEY N.M.P.M.

COUNTY EDDY

DESCRIPTION 2310' FSL & 990' FWL

ELEVATION 3260

OPERATOR DEVON ENERGY

LEASE CACTUS STATE

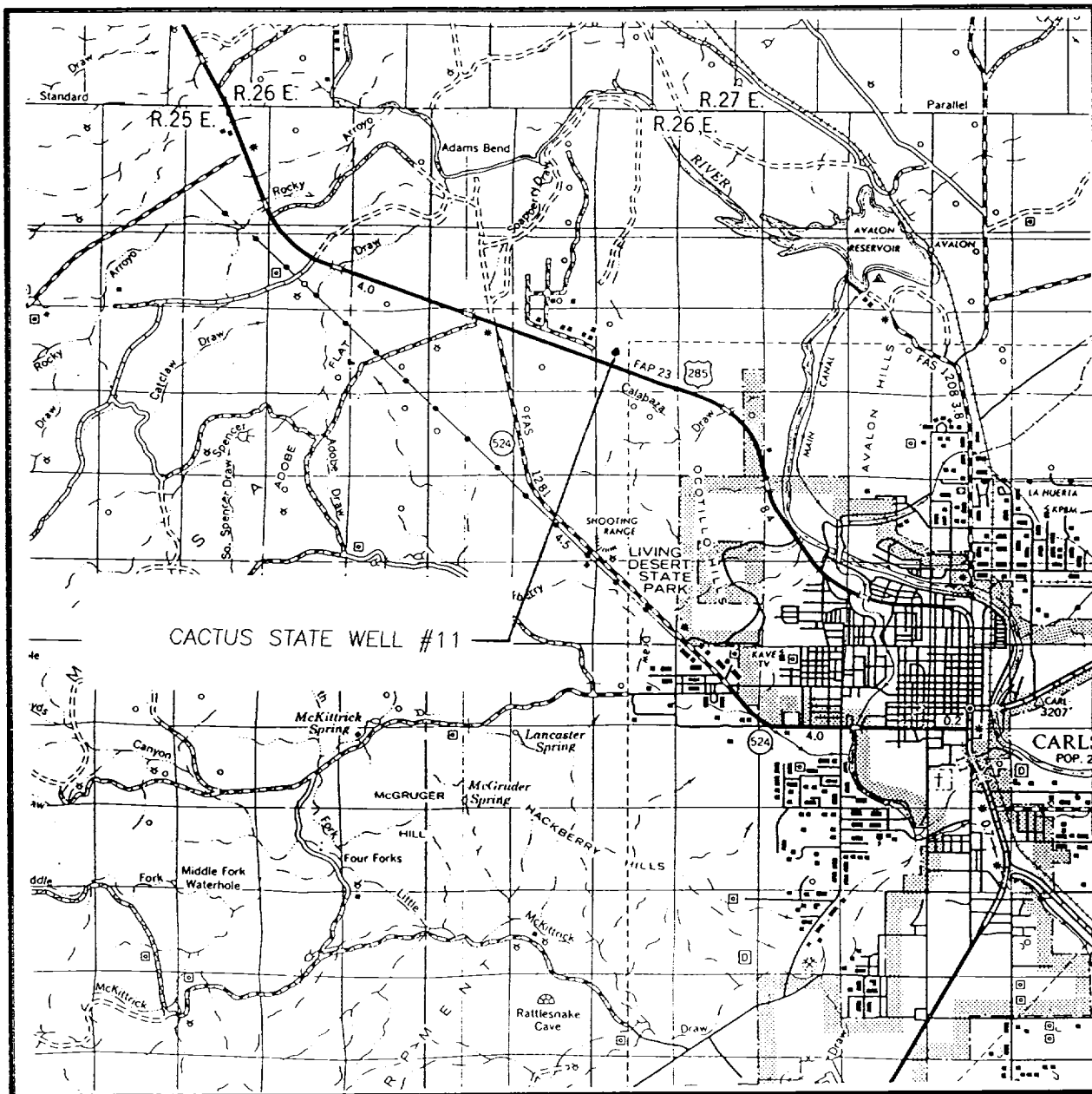
U.S.G.S. TOPOGRAPHIC MAP

WEST CARLSBAD, N.M.

**JOHN WEST ENGINEERING
HOBBS, NEW MEXICO**

(505) 393-3117

VICINITY MAP



SCALE: 1" = 2 MILES

SEC. 16 TWP. 21-S RGE. 26-E

SURVEY N.M.P.M.

COUNTY EDDY

DESCRIPTION 2310' FSL & 990' FWL

ELEVATION 3260

OPERATOR DEVON ENERGY

LEASE CACTUS STATE

JOHN WEST ENGINEERING
HOBBS, NEW MEXICO
(505) 393-3117