



November 20, 1995

RECEIVED

Mr. William LeMay, Director
Energy, Minerals and Natural Resources Department
Oil Conservation Division
2040 S. Pacheco
Santa Fe, NM 87504

NOV 21 1995
OIL CONSERVATION DIV.
SANTA FE

RE: Application for Administrative Approval of Unorthodox
Location on D. S. "26" Federal Lease, Well #2
UL. H, 1683' FNL & 1259' FEL, Section 26, T20S, R26E
Eddy County, New Mexico

Dear Sir:

Maralo, Inc., hereby requests administrative approval of the
above unorthodox location in accordance with Rule 104(E)III.


This well is a twin to the D. S. "26" Federal, Well #1.
(Administration Order NSL-3444) The necessity for the above
unorthodox location is based upon the same topographical
conditions. Form C-102 Well Location and Acreage Dedication
Plat, Vicinity Map and Location Verification Map are
included.

There are no offset operators to the 40-acre proration unit.

If you have any further questions, please contact John
Thoma, Geologist or Mark Wheeler, District Landman at (915)
684-7441.

Thank you for your prompt assistance.

Sincerely,


Dorothea Logan
Regulatory Analyst

attachments (3)

cc: ✓ Oil Conservation Division - Artesia
US Bureau of Land Management - Carlsbad

DISTRICT I
P.O. Box 1980, Hobbs, NM 88241-1980

DISTRICT II
P.O. Drawer DD, Artesia, NM 88211-0719

DISTRICT III
1000 Rio Brazos Rd., Aztec, NM 87410

DISTRICT IV
P.O. BOX 2088, SANTA FE, N.M. 87504-2088

State of New Mexico
Energy, Minerals and Natural Resources Department

Form C-102
Revised February 10, 1994
Submitted to Appropriate District Office
State Seal - 4 Copies
Fee Stamp - 3 Copies

RECEIVED

OIL CONSERVATION DIVISION

P.O. Box 2088
Santa Fe, New Mexico 87504-2088

NOV 21 1995

OIL CON. DIV. AMENDED REPORT

WELL LOCATION AND ACREAGE DEDICATION PLAT DIST. 2

API Number		Pool Code	Wildcat	Pool Name
Property Code	Property Name			Well Number
16299	D S 26 FEDERAL			2
OGRID No.	Operator Name			Elevation
14007	MARALO, INC.			3294

Surface Location

UL or lot No.	Section	Township	Range	Lot Idn	Feet from the	North/South line	Feet from the	East/West line	County
H	26	20 S	26 E		1683	NORTH	1259	EAST	EDDY

Bottom Hole Location If Different From Surface

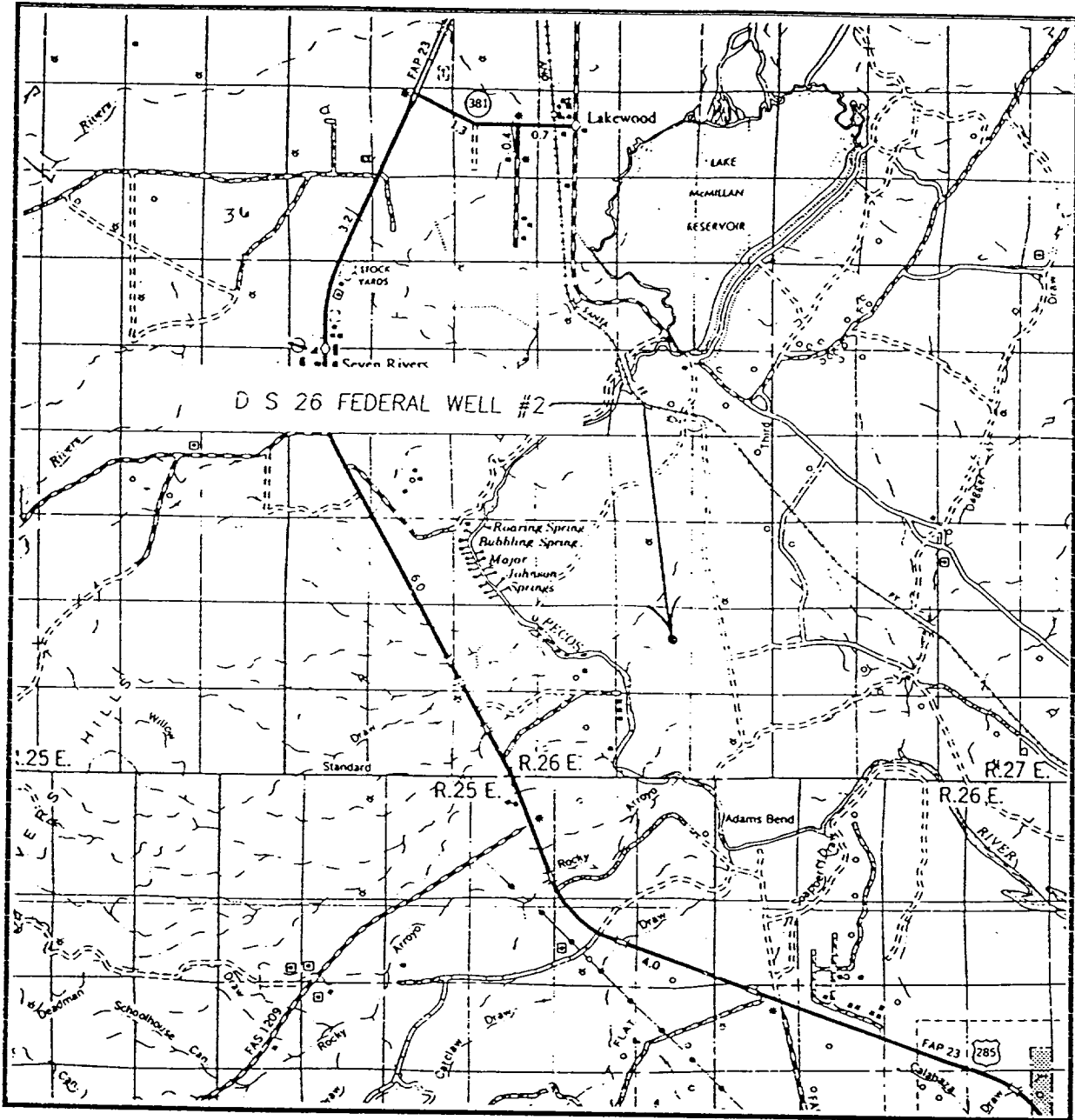
UL or lot No.	Section	Township	Range	Lot Idn	Feet from the	North/South line	Feet from the	East/West line	County

Dedicated Acres	Joint or Infill	Consolidation Code	Order No.
40			

NO ALLOWABLE WILL BE ASSIGNED TO THIS COMPLETION UNTIL ALL INTERESTS HAVE BEEN CONSOLIDATED OR A NON-STANDARD UNIT HAS BEEN APPROVED BY THE DIVISION

	<p>OPERATOR CERTIFICATION</p> <p>I hereby certify the the information contained herein is true and complete to the best of my knowledge and belief.</p> <p><i>Joe T. Janica</i> Signature</p> <p>Joe T. Janica Printed Name</p> <p>Agent Title</p> <p>10/17/95 Date</p>
	<p>SEE DETAIL</p>
	<p>SURVEYOR CERTIFICATION</p> <p>I hereby certify that the well location shown on this plat was plotted from field notes of actual surveys made by me or under my supervision and that the same is true and correct to the best of my belief.</p> <p>OCTOBER 3, 1995 Date Surveyed</p> <p>SJA Signature & Seal of Professional Surveyor</p> <p><i>Ronald W. Edson</i> Professional Surveyor</p> <p>10-06-95 W.O. Num 95-101500</p> <p>Certificate No. RONALD W. WEST 676 RONALD W. EDSON 3239 PROFESSIONAL SURVEYOR EDSON 12641</p>

VICINITY MAP

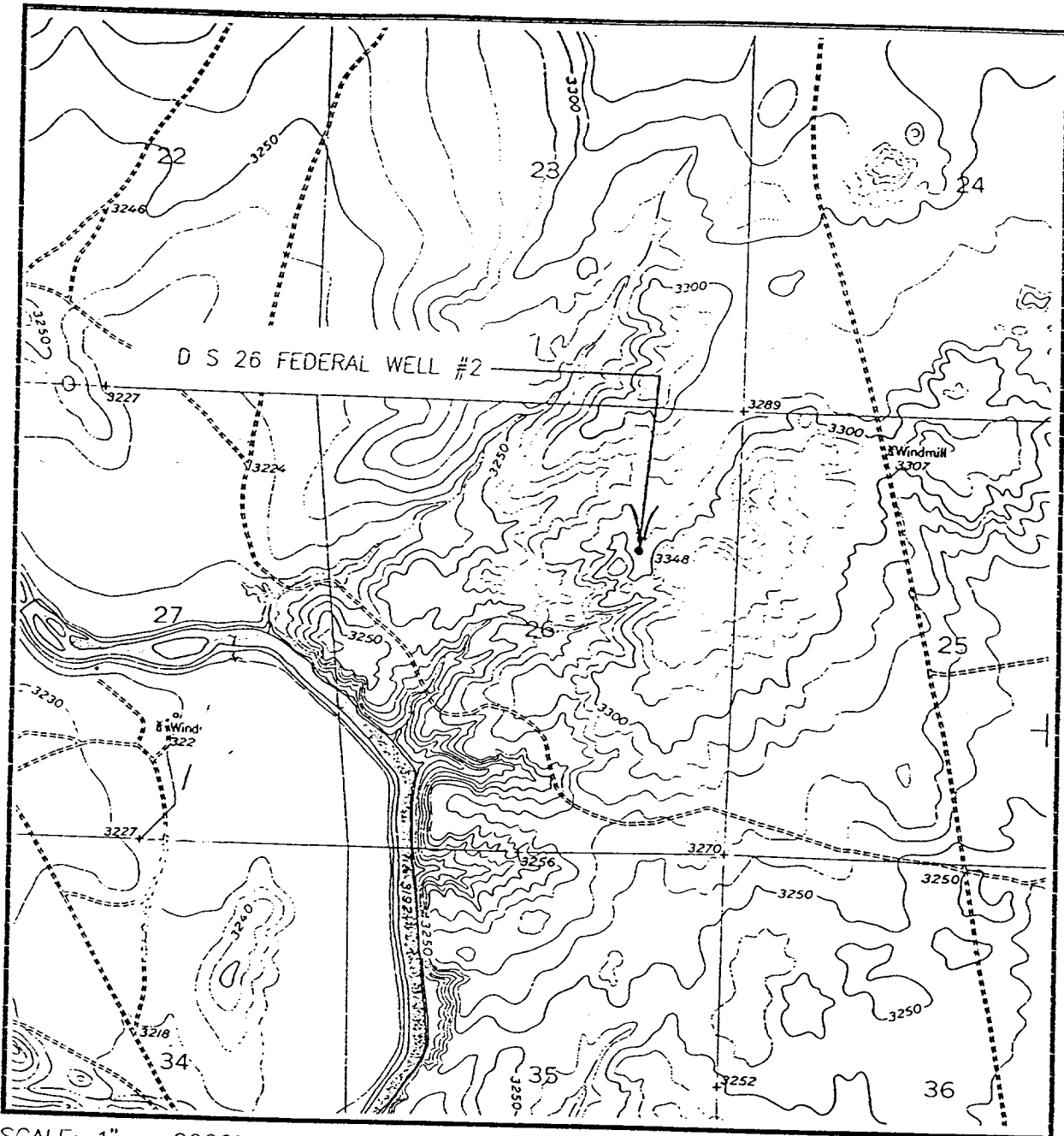


SCALE: 1" = 2 MILES

SEC. 26 TWP. 20-S RGE. 26-E
 SURVEY N.M.P.M.
 COUNTY EDDY
 DESCRIPTION 1683' FNL & 1259' FEL
 ELEVATION 3294
 OPERATOR MARALO, INC.
 LEASE D S 26 FEDERAL

JOHN WEST ENGINEERING
HOBBS, NEW MEXICO
(505) 393-3117

LOCATION VERIFICATION MAP



SCALE: 1" = 2000'

CONTOUR INTERVAL - 10'

SEC. 26 TWP. 20-S RGE. 26-E

SURVEY N.M.P.M.

COUNTY EDDY

DESCRIPTION 1683' FNL & 1259' FEL

ELEVATION 3294

OPERATOR MARALO, INC.

LEASE D S 26 FEDERAL

**JOHN WEST ENGINEERING
HOBBS, NEW MEXICO**

(505) 393-3117

U.S.G.S. TOPOGRAPHIC MAP
LAKE McMILLAN SOUTH, N.M.