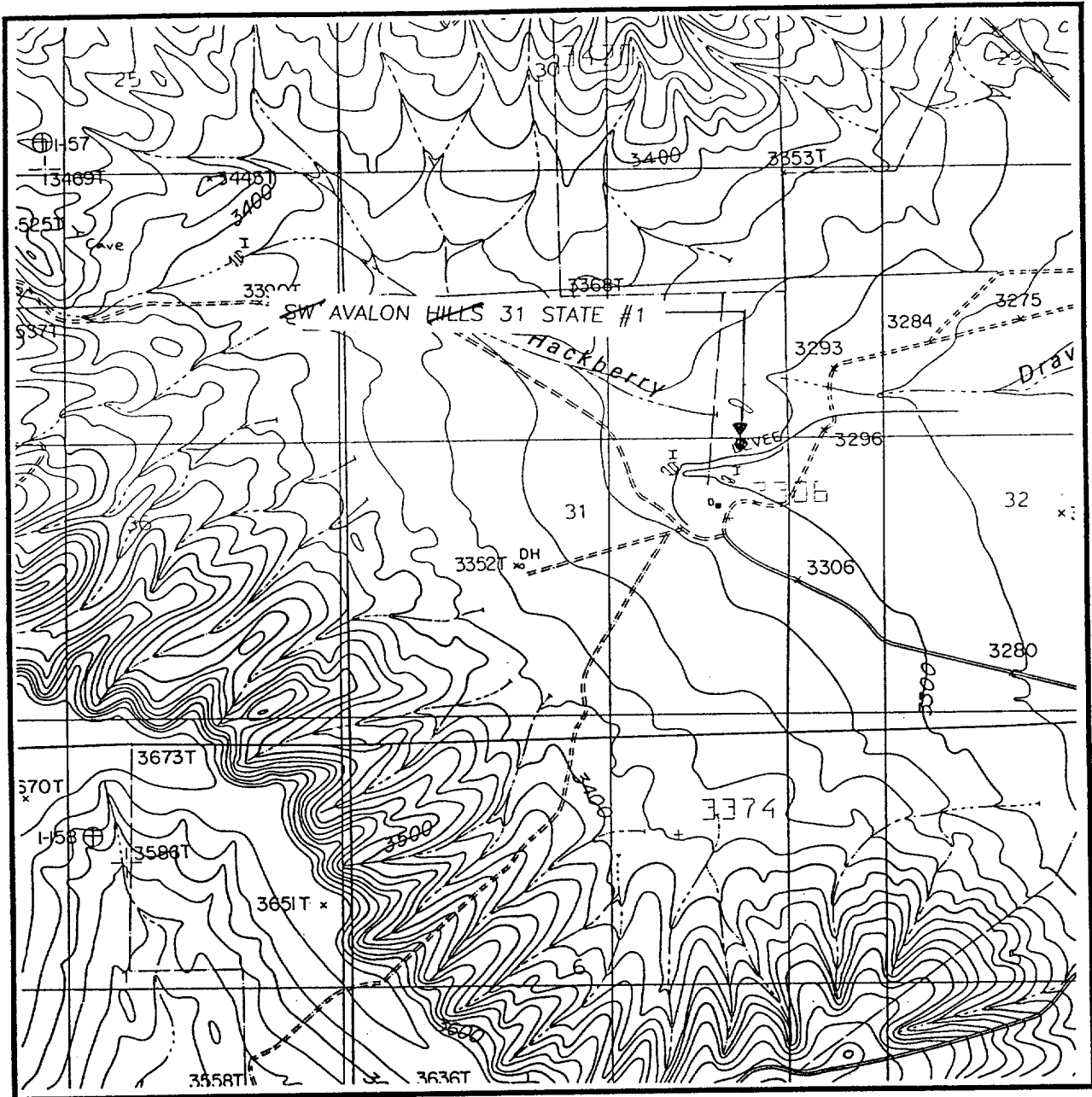


LOCATION VERIFICATION MAP



SCALE: 1" = 2000'

CONTOUR INTERVAL:
CARLSBAD WEST - 20'

SEC. 31 TWP. 21-S RGE. 26-E

SURVEY _____ N.M.P.M.

COUNTY _____ EDDY

DESCRIPTION 1980' FNL & 990' FEL

ELEVATION _____ 3308

OPERATOR _____ MEWBOURNE OIL CO.

LEASE SW AVALON HILLS 31 STATE

U.S.G.S. TOPOGRAPHIC MAP

_____ CARLSBAD WEST, N.M.

**JOHN WEST SURVEYING
HOBBS, NEW MEXICO**

(505) 393-3117