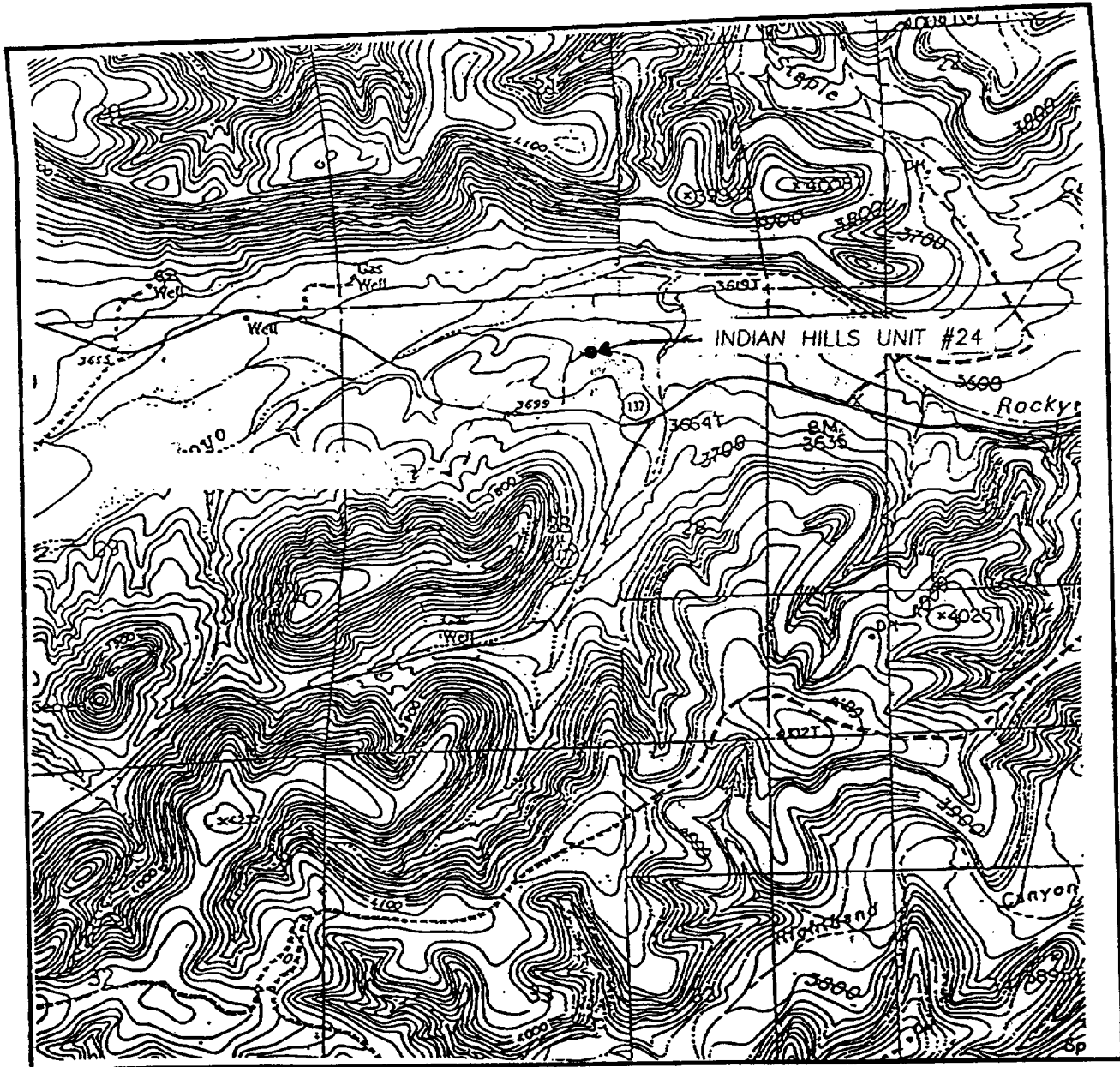


LOCATION VERIFICATION MAP



SCALE: 1" = 2000'

CONTOUR INTERVAL:
AZOTEA PEAK - 20'
MARTHA CREEK - 20'

SEC. 28 TWP. 21-S RGE. 24-E

SURVEY _____ N.M.P.M. _____

COUNTY _____ EDDY _____

DESCRIPTION 685' FNL & 2073' FEL

ELEVATION _____ 3658 _____

OPERATOR MARATHON OIL COMPANY

LEASE _____ INDIAN HILLS UNIT _____

U.S.G.S. TOPOGRAPHIC MAP

AZOTEA PEAK, MARTHA CREEK, N.M.

**JOHN WEST SURVEYING
HOBBS, NEW MEXICO
(505 393-3117)**