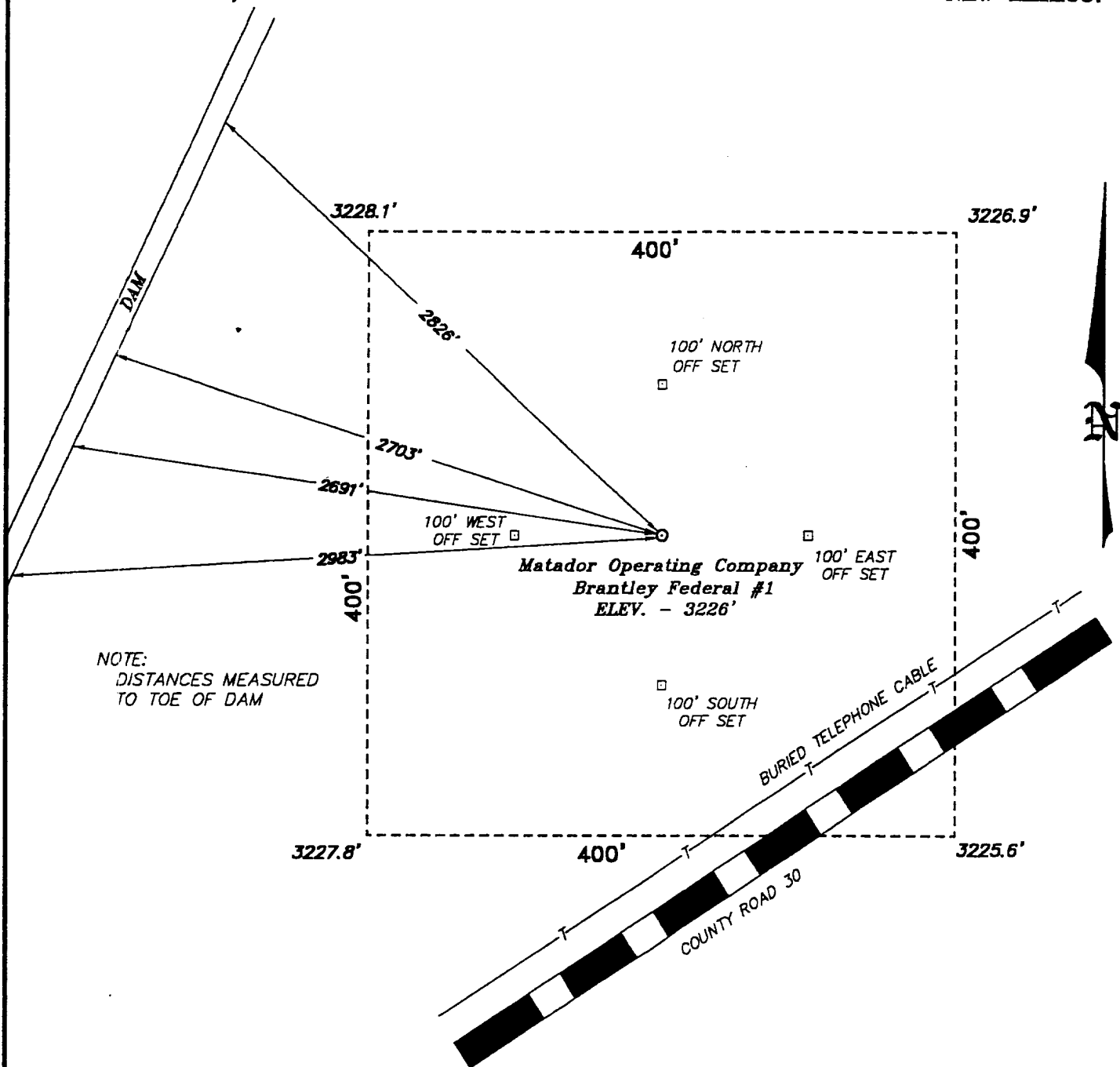


SECTION 34, TOWNSHIP 20 SOUTH, RANGE 26 EAST, N.M.P.M.,
EDDY COUNTY, NEW MEXICO.



Matador Operating Company
Brantley Federal #1
660' FNL; 1500' FWL
Sec 34, T20S, R26E
Eddy County, New Mexico

Exhibit "B-1"
Wellsite Plan

BASIN SURVEYS P.O. BOX 1786 - HOBBS, NEW MEXICO

W.O. Number: 0482

Drawn By: K. GOAD

MATADOR OPERATING COMPANY

REF: Brantley Federal #1 / Well Pad Topo

THE BRANTLEY FED. No. 1 LOCATED 660' FROM THE
NORTH LINE AND 1500' FROM THE WEST LINE OF
SECTION 34, TOWNSHIP 20 SOUTH, RANGE 26 EAST,
N.M.P.M., EDDY COUNTY, NEW MEXICO.