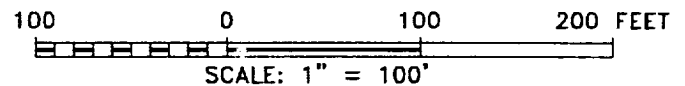
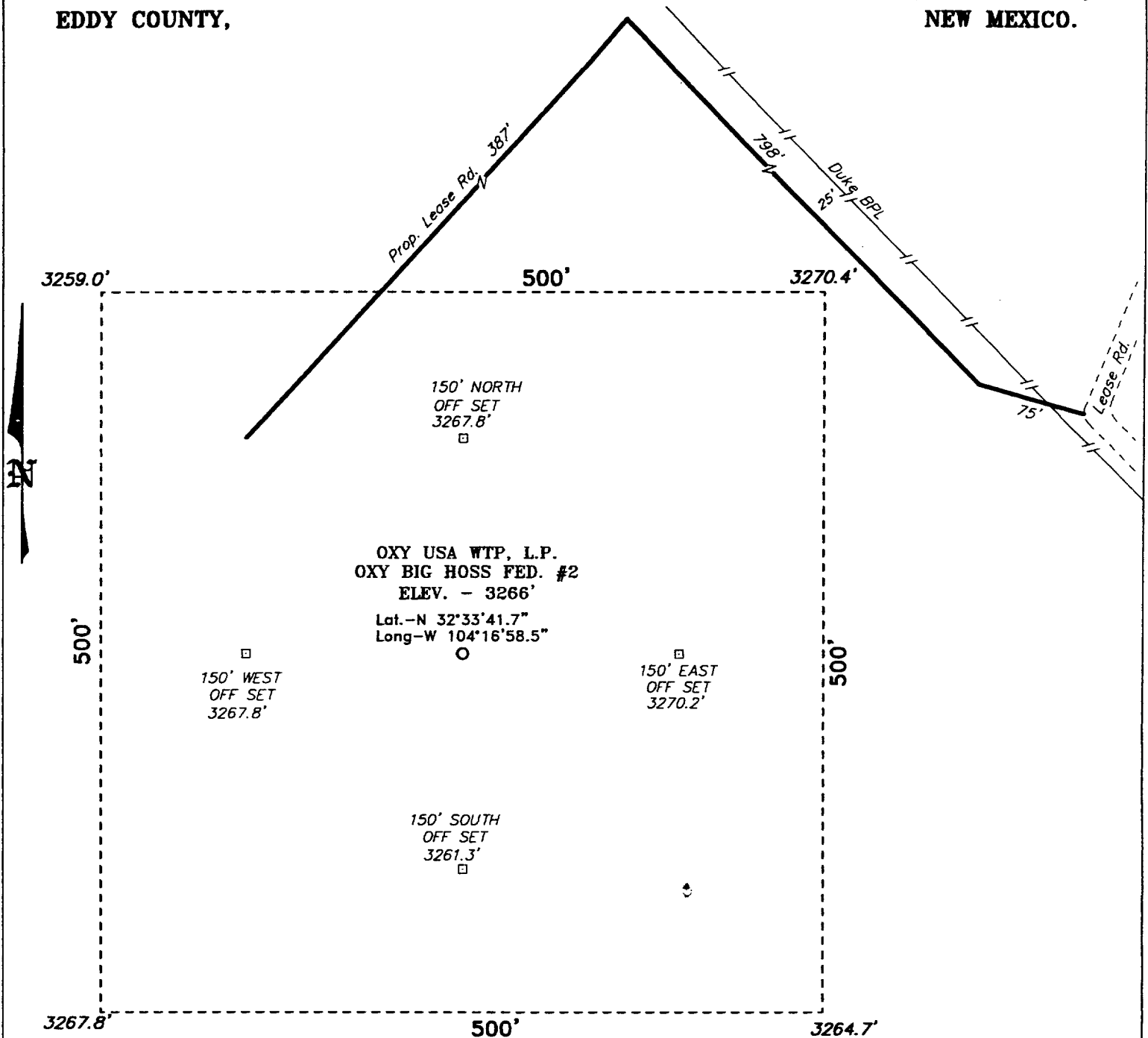


**SECTION 21, TOWNSHIP 20 SOUTH, RANGE 27 EAST, N.M.P.M.,
EDDY COUNTY, NEW MEXICO.**



Directions to Location:

FROM THE JUNCTION OF CO. RD. 34(LAKE RD.) AND ILLINOIS CAMP RD., GO NORTHWEST ON 34 FOR 3.7 MILES TO LEASE; THENCE NORTHEAST ON LEASE ROAD FOR 0.5 MILE; THENCE NORTHWEST 1.0 MILE TO PROPOSED LEASE ROAD.

OXY USA WTP, L.P.

REF: OXY BIG HOSS FED. #2 / Well Pad Topo

THE OXY BIG HOSS FED. No. 2 LOCATED 1700' FROM THE NORTH LINE AND 1650' FROM THE EAST LINE OF SECTION 21, TOWNSHIP 20 SOUTH, RANGE 27 EAST, N.M.P.M., EDDY COUNTY, NEW MEXICO.

BASIN SURVEYS P.O. BOX 1786 - HOBBS, NEW MEXICO

W.O. Number: 2619

Drawn By: K. GOAD

Date: 07-18-2002

Disk: KJG CD#5 - 2619A.DWG

Survey Date: 07-17-2002

Sheet 1 of 1 Sheets