

**NEW MEXICO OIL CONSERVATION COMMISSION
WELL LOCATION AND ACREAGE DEDICATION PLAT**

Form C-102
Supersedes C-128
Effective 1-1-65

All distances must be from the outer boundaries of the Section.

Operator C & K PETROLEUM, INC.			Lease PENNZOIL FEDERAL 15		Well No. 1
Unit Letter K	Section 15	Township 24 SOUTH	Range 26 EAST	County EDDY	
Actual Footage Location of Well:					
1980 feet from the SOUTH line and		1980 feet from the WEST line			
Ground Level Elev. 3321.1	Producing Formation Morrow	Pool White City (Penn)	Dedicated Acreage: 640 Acres		

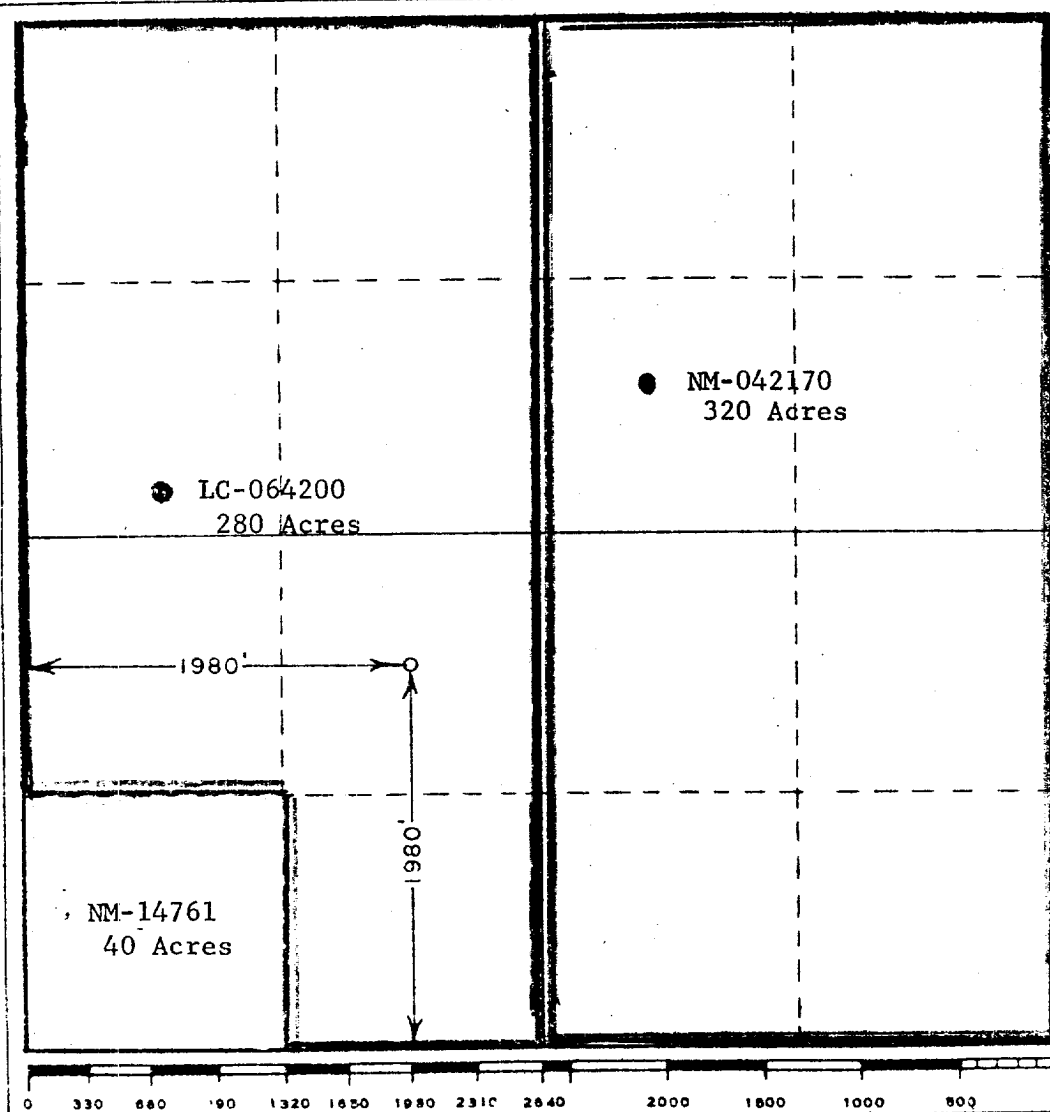
1. Outline the acreage dedicated to the subject well by colored pencil or hachure marks on the plat below.
2. If more than one lease is dedicated to the well, outline each and identify the ownership thereof (both as to working interest and royalty).

See Reverse Side of Form
3. If more than one lease of different ownership is dedicated to the well, have the interests of all owners been consolidated by communitization, unitization, force-pooling, etc?

☐ Yes ☒ No If answer is "yes," type of consolidation _____

If answer is "no," list the owners and tract descriptions which have actually been consolidated. (Use reverse side of this form if necessary.) _____

No allowable will be assigned to the well until all interests have been consolidated (by communitization, unitization, forced-pooling, or otherwise) or until a non-standard unit, eliminating such interests, has been approved by the Commission.



CERTIFICATION

I hereby certify that the information contained herein is true and complete to the best of my knowledge and belief.

[Signature]

Name

Adm. Supervisor

Position

C & K Petroleum, Inc.

Company

May 24, 1976

Date

RECEIVED

I hereby certify that the well location shown on this plat was plotted from field notes of actual survey made by me or under my supervision, and that the same is true and correct to the best of my knowledge and belief.

MAY 26 1976
U. S. GEOLOGICAL SURVEY
ARTESIA, NEW MEXICO

Date Surveyed

18, 1976

Registered Professional Engineer and Land Surveyor **676**

Certified by

JOHN W. WEST

WORKING INTEREST

● LC-064200

Pennzoil - 30.46875%
Allied Chemical - 41.25%
Joseph I. O'Neill, Jr. 4.375%
Wainoco, Inc. - 7.03125%
J. M. Huber Corp. - 4.375%
Tom Brown, Inc. - 12.50%

● NM-042170

Pennzoil - 30.46875%
Allied Chemical - 41.25%
Joseph I. O'Neill, Jr. - 4.375%
Wainoco, Inc. - 7.03125%
C & K Pet., Inc. (Huber) - 4.375%
Tom Brown, Inc. - 12.50%

● NM-14761

MWJ Producing Co. - 100%

ROYALTY INTEREST

● LC-064200	-	12 $\frac{1}{2}$ %	USGS
● NM-042170	-	12 $\frac{1}{2}$ %	USGS
● NM-14761	-	12 $\frac{1}{2}$ %	USGS