

RECEIVED

UNITED STATES
DEPARTMENT OF THE INTERIOR
GEOLOGICAL SURVEY
NOV 3 1976

30-015-21960

APPLICATION FOR PERMIT TO DRILL, DEEPEN, OR PLUG BACK

1. TYPE OF WORK ARTESIA <input checked="" type="checkbox"/> DEEPEN <input type="checkbox"/> PLUG BACK <input type="checkbox"/>		5. LEASE DESIGNATION AND SERIAL NO. NM-0415461	
2. NAME OF OPERATOR Amoco Production Company ✓		6. IF INDIAN, ALLOTTEE OR TRIBE NAME	
3. ADDRESS OF OPERATOR P. O. Drawer A, Levelland, Texas 79336		7. UNIT AGREEMENT NAME Old Indian Draw Unit	
4. LOCATION OF WELL (Report location clearly and in accordance with any State requirements.)* At surface 660' FNL 1973' FWL, Sec 19 (Unit C NE/4 NW/4) At proposed prod. zone		8. FARM OR LEASE NAME Old Indian Draw Unit	
14. DISTANCE IN MILES AND DIRECTION FROM NEAREST TOWN OR POST OFFICE* 9 miles southeast of Carlsbad, NM		9. WELL NO. 17	
15. DISTANCE FROM PROPOSED* LOCATION TO NEAREST PROPERTY OR LEASE LINE, FT. (Also to nearest drilg. unit line, if any)		10. FIELD AND POOL, OR WILDCAT Indian Draw Delaware	
16. NO. OF ACRES IN LEASE		11. SEC., T., R., M., OR B.L. AND SURVEY OR AREA 19-22-28 NMPM	
17. DISTANCE FROM PROPOSED LOCATION* TO NEAREST WELL, DRILLING COMPLETED, OR APPLIED FOR, ON THIS LEASE, FT.		12. COUNTY OR PARISH Eddy	
18. PROPOSED DEPTH 3450'		13. STATE NM	
19. ELEVATIONS (Show whether DF, RT, GR, etc.) 3074.2 GL		17. NO. OF ACRES ASSIGNED TO THIS WELL 40	
20. ROTARY OR CABLE TOOLS Rotary		22. APPROX. DATE WORK WILL START*	

23. PROPOSED CASING AND CEMENTING PROGRAM

SIZE OF HOLE	SIZE OF CASING	WEIGHT PER FOOT	SETTING DEPTH	QUANTITY OF CEMENT
12-1/4"	8-5/8"	24#	400'	Circulate
7-7/8"	5-1/2"	14 - 15.5#	3450'	Sufficient to tie back into surface pipe.

After drilling well, logs will be run and evaluations made, perforating and/or stimulating as necessary in attempting commercial production.

Mud Program: O-SCP Water & Native Mud
SCP-TD Brine & Native Mud

BOP Program Attached

RECEIVED

AUG 30 1976

U. S. GEOLOGICAL SURVEY
ARTESIA, NEW MEXICO

IN ABOVE SPACE DESCRIBE PROPOSED PROGRAM: If proposal is to deepen or plug back, give data on present productive zone and proposed new productive zone. If proposal is to drill or deepen directionally, give pertinent data on subsurface locations and measured and true vertical depths. Give blowout preventer program, if any.

SIGNED Ray W. Cox TITLE Administrative Assistant DATE 8/20/76
(This space for Federal or State office use)

PERMIT NO.

APPROVED BY

CONDITIONS OF APPROVAL, IF ANY:

THIS APPROVAL IS EXTENDED IF OPERATIONS
ARE NOT COMPLETED WITHIN 3 MONTHS.
EXPIRES FEB - 0 1977

DATE

4 USGS-ARAP
1-DIV
1-SUSP
1-RC
2-Bass
1-MARATHON

ACTING DISTRICT ENGINEER

*See Instructions On Reverse Side

NEW MEXICO OIL CONSERVATION COMMISSION
WELL LOCATION AND ACREAGE DEDICATION PLAT

RECEIVED
AUG 30 1976
U.S. GEOLOGICAL SURVEY
ARTESIA, NEW MEXICO

Form O-102
Supersedes O-128
Effective 1-1-65

All distances must be from the outer boundaries of the Section

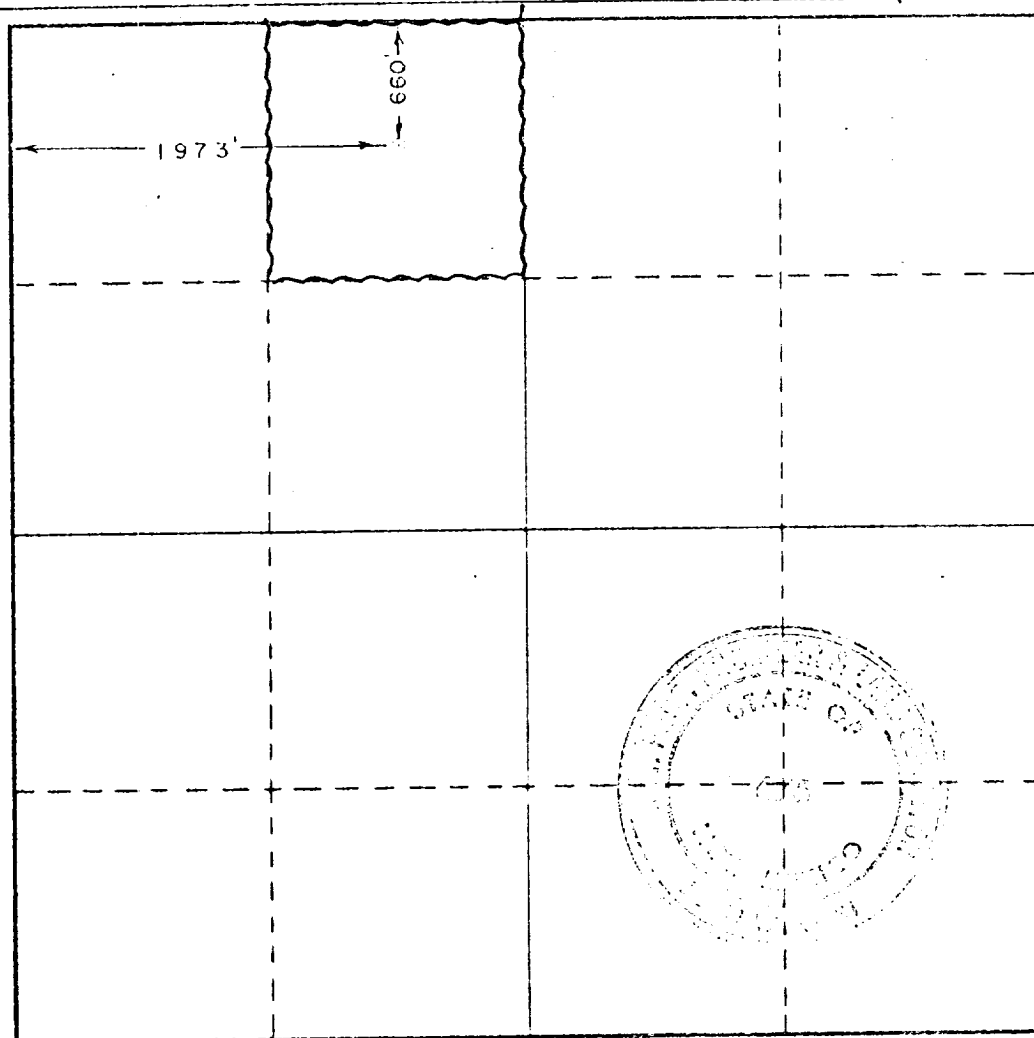
Operator AMOCO PRODUCTION COMPANY			Lease Old Indian Draw Unit		
Unit Letter C	Section 19	Township 22 South	Range 28 East	County Eddy	
Actual Well Location of Well: 660 feet from the north line and 1973 feet from the west line					
Ground Level Elev. 3074.2	Producing Formation DELAWARE		Foot INDIAN DRAW DELAWARE		Dedicated Acreage: 40

1. Outline the acreage dedicated to the subject well by colored pencil or hatchure marks on the plat below.
2. If more than one lease is dedicated to the well, outline each and identify the ownership thereof (both as to working interest and royalty).
3. If more than one lease of different ownership is dedicated to the well, have the interests of all owners been consolidated by communitization, unitization, force-pooling, etc?

☐ Yes ☐ No If answer is "yes," type of consolidation _____

If answer is "no," list the owners and tract descriptions which have actually been consolidated. (Use reverse side of this form if necessary.) _____

No allowable will be assigned to the well until all interests have been consolidated (by communitization, unitization, forced-pooling, or otherwise) or until a non-standard unit, eliminating such interests, has been approved by the Commission.



CERTIFICATION

I hereby certify that the information contained herein is true and complete to the best of my knowledge and belief.

Name Ray W. Cox
Position Administrative Assistant
Company AMOCO PRODUCTION COMPANY
Date Aug. 20, 1976

I hereby certify that the well location shown on this plat was plotted from field notes of actual surveys made by me or under my supervision, and that the same is true and correct to the best of my knowledge and belief.

Date Surveyed August 13, 1976
Registered Professional Engineer and or Land Surveyor

John W. West
Certificate No. 676

Amoco Production Company

ENGINEERING CHART
(TRACING)

SHEET NO. OF

FILE

APPN.

DATE

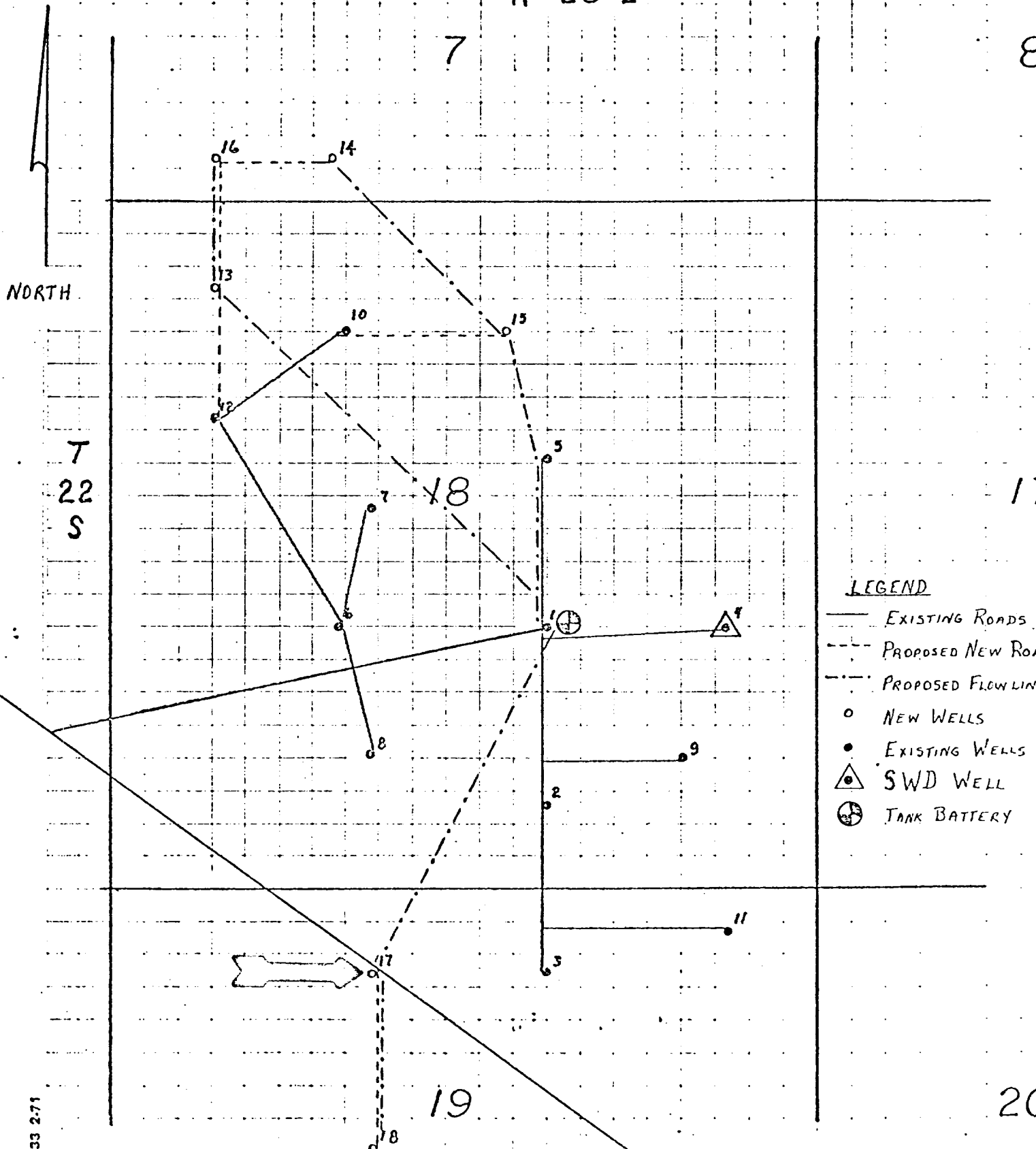
BY

SUBJECT OLD INDIAN DRAW UNIT

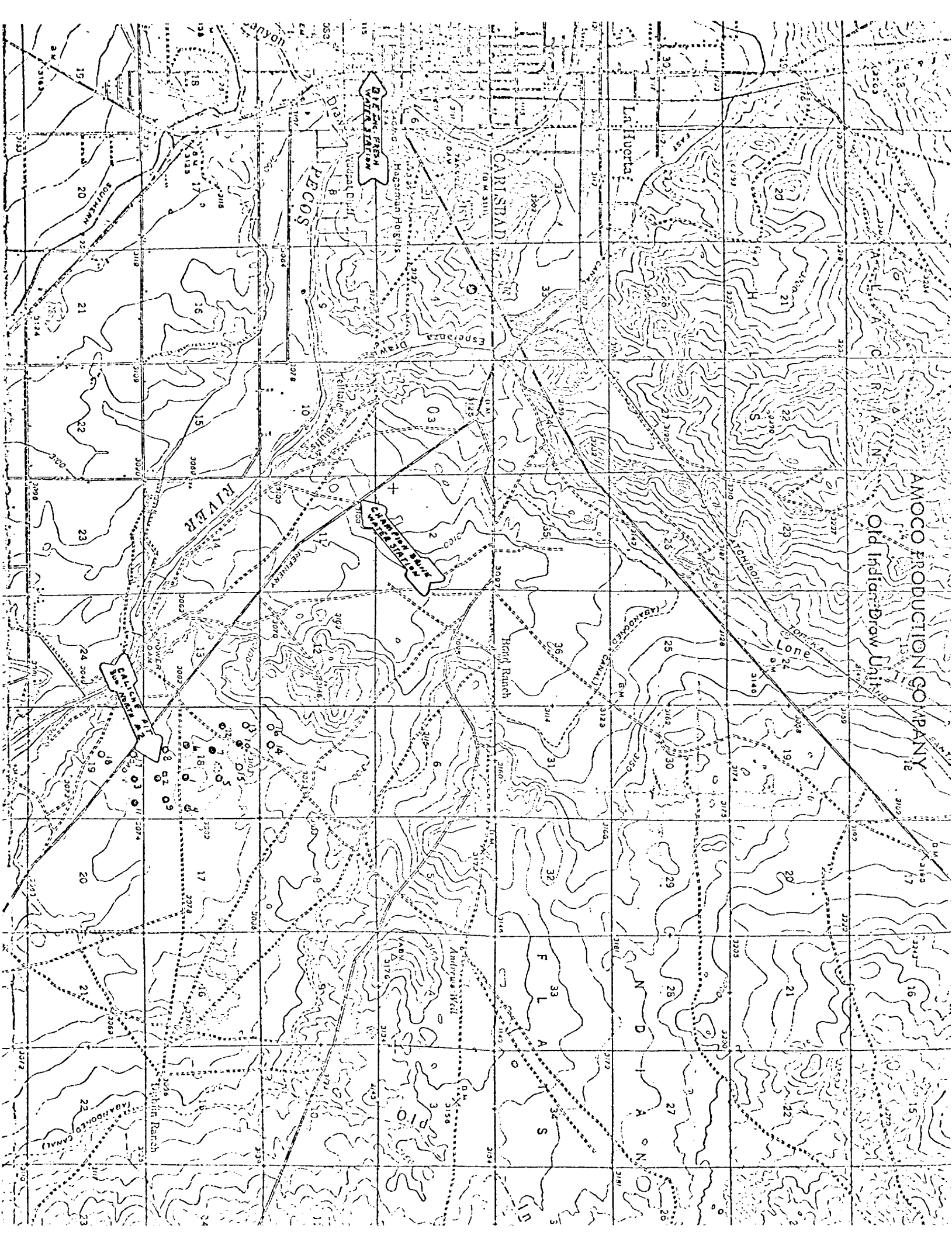
SEC. 7, 18 & 19, T-22-S, R-28-E, Eddy Co., N.M.

R-28-E

7



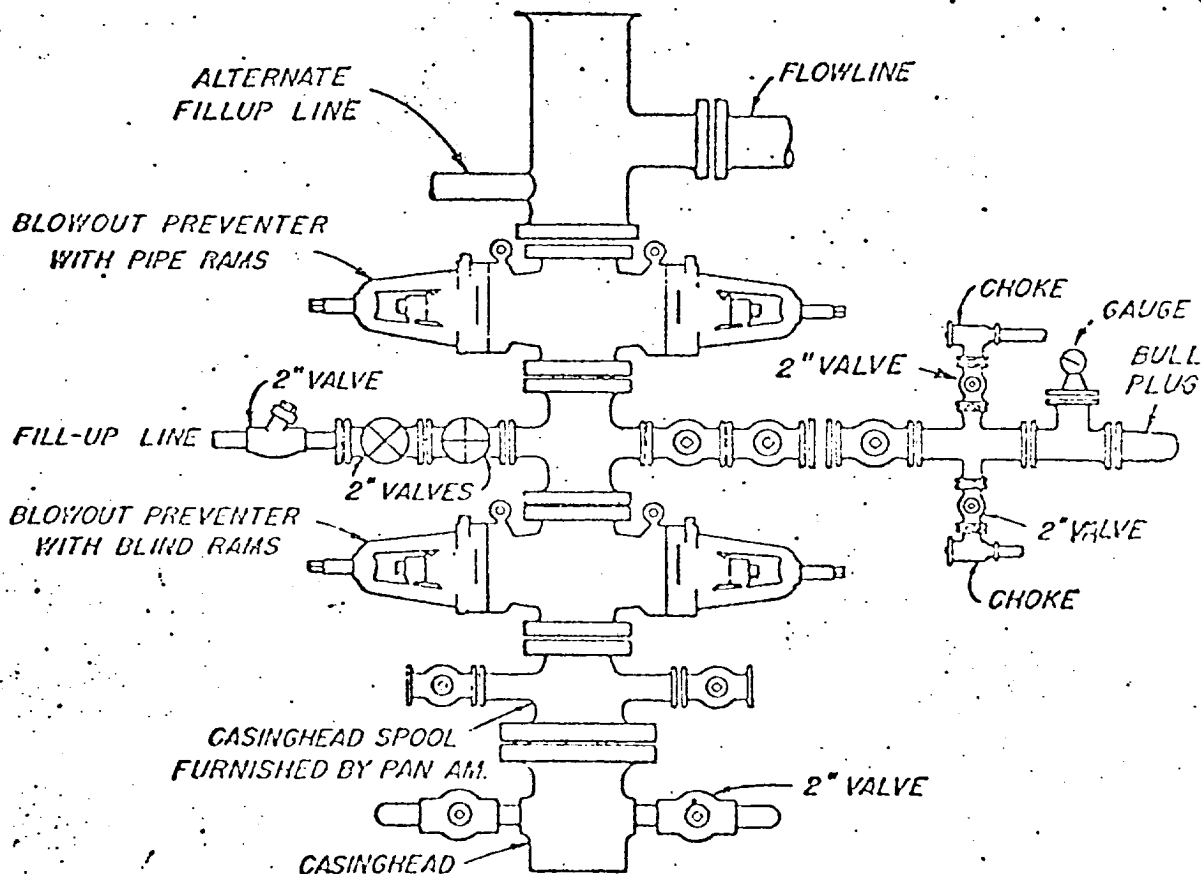
Old Indian-Brow Unit



ATTACHMENT "B"

NOTES

1. Blow-out preventers and master valve to be fluid operated and all fittings must be in good condition, 3,000# W.P. (6,000 p.s.i. test), minimum.
2. Equipment through which bit must pass shall be as large as the inside diameter of the casing that is being drilled through.
3. Nipple above blow-out preventer shall be same size as casing being drilled through.
4. Kelly cock required, 3,000# W.P. (6,000 p.s.i. test), minimum.
5. OMSCO or comparable safety valve must be available on rig floor at all times with proper connection or sub, 3,000# W.P. (6,000 p.s.i. test), minimum.
6. Blow-out preventers and master valve while drilling intermediate hole to 6,000' may be 2,000# W.P. (4,000 p.s.i. test), minimum.
7. Choke assembly, beyond second valve from cross, may be positioned (Optional) outside of derrick foundation.
8. Spool or cross may be eliminated if connections are available in the lower part of the blow-out preventer body.
9. Plug valves - gate valves are optional. Valves shown as 2" are minimum size.
10. Casing head and casing head spool, including attached valves, to be furnished by Pan American.
11. Rams in preventers will be installed as follows:
 When drilling, use:
 Top Preventer - Drill pipe rams
 Bottom Preventer - Blind rams or master valve
 When running casing, use:
 Top Preventer - Casing rams
 Bottom Preventer - Blind rams or master valve.



BLOWOUT PREVENTER HOOK-UP
 PAN AMERICAN PETROLEUM CORP.

EXHIBIT D-1 MODIFIED

JUNE 1, 1962