

NEW MEXICO OIL CONSERVATION COMMISSION WELL LOCATION AND ACREAGE DEDICATION PLAT

Form C-102
Supersedes C-
Effective 1-1-6

All distances must be from the corner boundaries of the Section.

Operator Amoco Production Company				Lease Brantley Gas Com.		Well No. 1
Unit Letter K	Section 22	Township 23 South	Range 28 East	County Eddy		
Actual Footage Location of Well:						

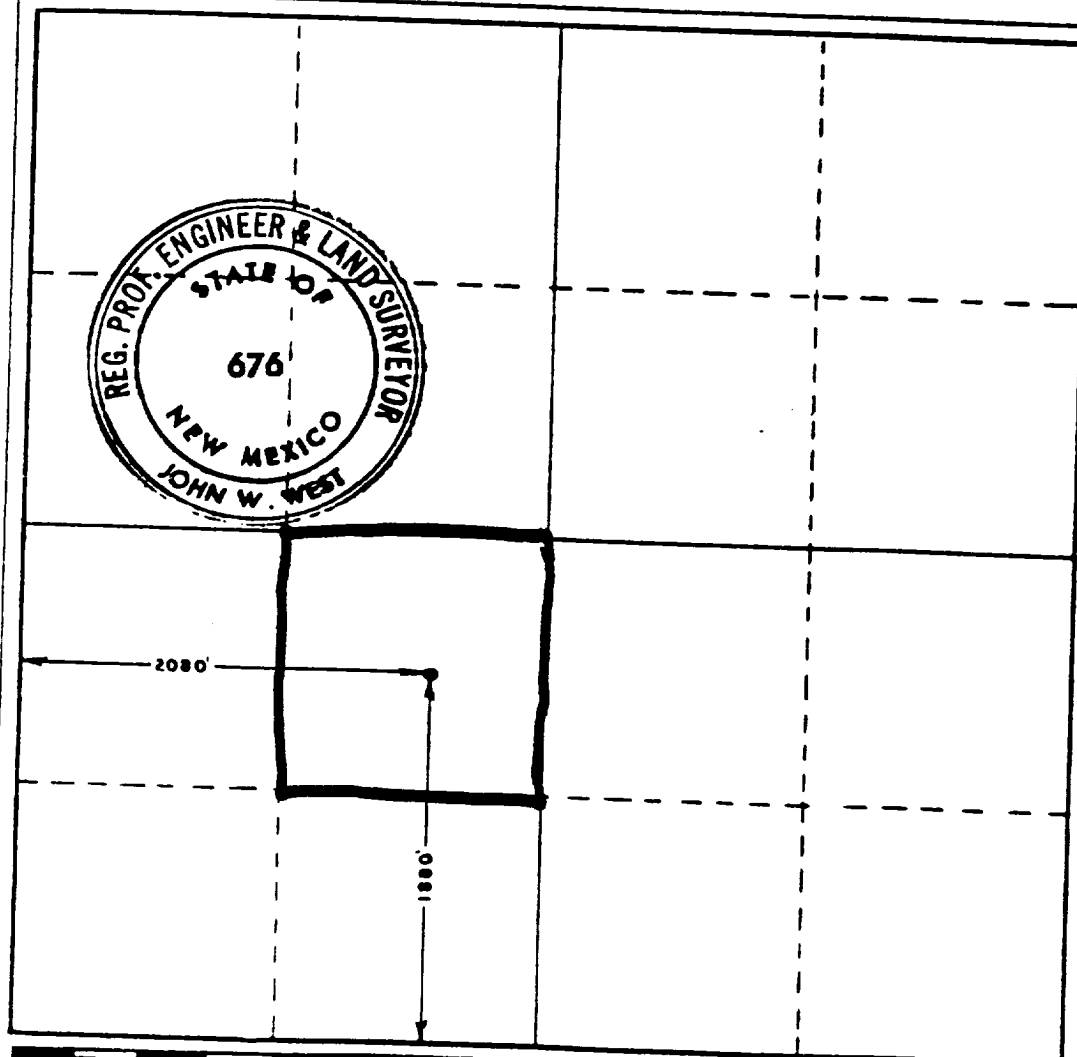
1880 feet from the South line and		2080 feet from the West line	
Ground Level Elev. 3012.3	Producing Formation East Loving Delaware	Pool Delaware	Dedicated Acreage 40 Acres

1. Outline the acreage dedicated to the subject well by colored pencil or hatchure marks on the plat below.
2. If more than one lease is dedicated to the well, outline each and identify the ownership thereof (both as to working interest and royalty).
3. If more than one lease of different ownership is dedicated to the well, have the interests of all owners been consolidated by communitization, unitization, force-pooling, etc?

☐ Yes ☐ No If answer is "yes," type of consolidation _____

If answer is "no," list the owners and tract descriptions which have actually been consolidated. (Use reverse side of this form if necessary.) _____

No allowable will be assigned to the well until all interests have been consolidated (by communitization, unitization, forced-pooling, or otherwise) or until a non-standard unit, eliminating such interests, has been approved by the Commission.



CERTIFICATION

I hereby certify that the information contained herein is true and complete to the best of my knowledge and belief.

H. I. Black

Name

H. I. BLACK

Position

Sr. Administrative Analyst

Company

Amoco Production Company

Date

8-11-92

I hereby certify that the well location shown on this plat was plotted from field notes of actual surveys made by me or under my supervision, and that the same is true and correct to the best of my knowledge and belief.

Date Surveyed

August 3, 1978

Registered Professional Engineer and/or Land Surveyor

John W. West
Certificate No. **John W. West**

676