

OIL CONSERVATION DIVISION  
P. O. DRAWER DD  
ARTESIA, NM 88210

DEC 14 1980

RECEIVED  
12/19/80  
DATE \_\_\_\_\_

NOTICE OF GAS CONNECTION

This is to notify the Oil Conservation Division that connection for the purchase of gas from the Aminoil U.S.A., Inc. ✓  
OPERATOR

Vasquez Com. #1

Eddy

F 3-24S-28E

LEASE & WELL

COUNTY

UNIT S-T-R

Malaga Atoka

El Paso Natural Gas Co.

POOL

NAME OF PURCHASER

December 19, 1980

30558

01

was made on

DATE

SITE CODE

SITE WELL NUMBER

El Paso Natural Gas Co.

PURCHASER

*M. H. M. Stehman*

REPRESENTATIVE

Assistant Chief Division Dispatcher

TITLE

MHM:bl

cc: Operator

Oil Conservation Division - Santa Fe, NM

H. P. Logan

M. E. McEuen

Proration

Measurement - Jal

R. L. Tabb

Earl Smith

File

#### IV. COMPLETION DATA

##### TUBING, CASING, & CEMENTING RECORD

<u>HOLE SIZE</u>	<u>CASING &amp; TUBING SIZE</u>	<u>DEPTH SET</u>	<u>SACKS CEMENT</u>
8½"	7 5/8" Liner	9,565'-12,008'	550 sx
6½"	4 1/2" Liner	11,756'-12,744'	120 sx

NEW MEXICO OIL CONSERVATION COMMISSION  
 WELL LOCATION AND ACREAGE DEDICATION PLAT

DEC 18 1980

All distances must be from the outer boundaries of the Section

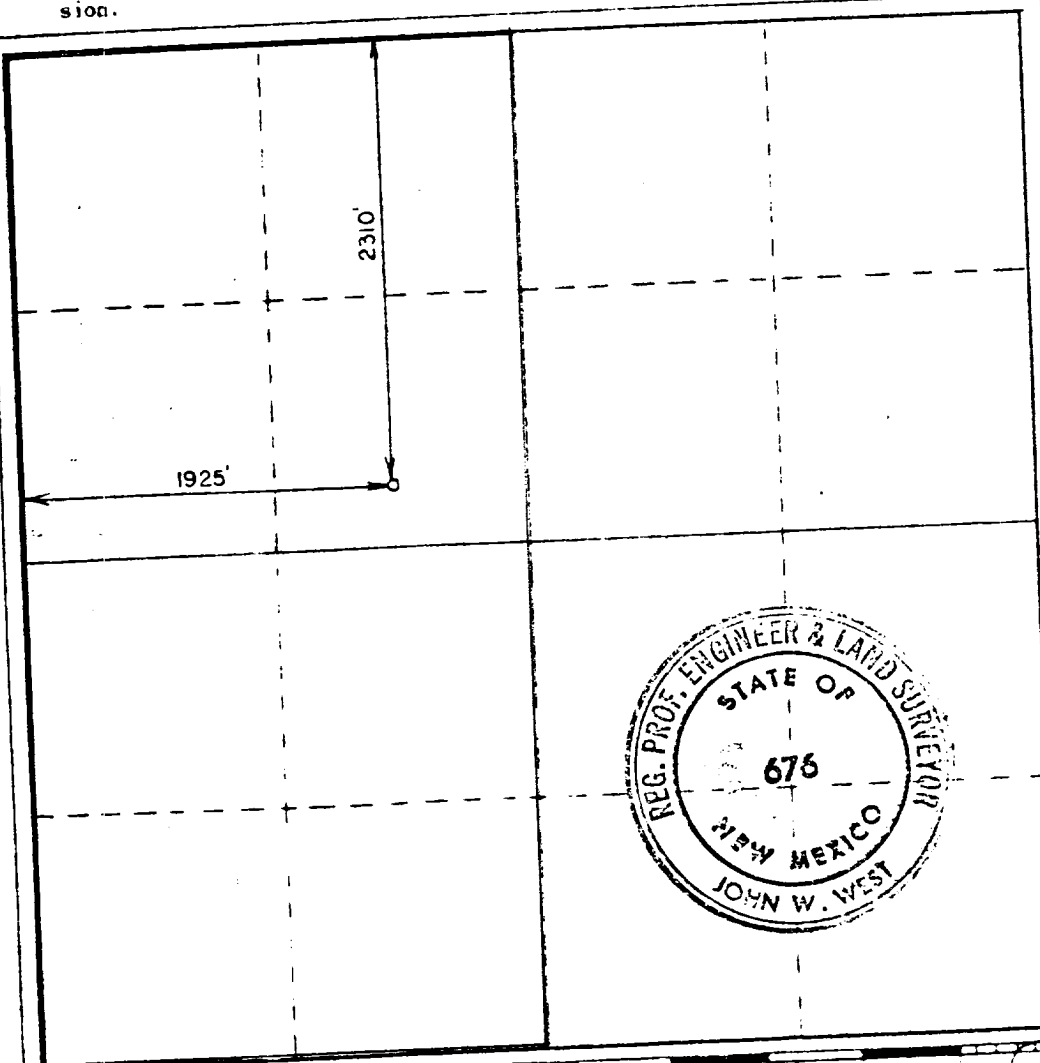
Operator <b>AMINOIL USA, INC.</b>		Lease <b>Vasquez</b>		SPECIAL OFFICE	
Unit Letter <b>F</b>	Section <b>3</b>	Quarter <b>24 South</b>	Range <b>28 East</b>	County <b>Eddy</b>	
Actual Frontal Location of Well: <b>2310</b> feet from the <b>North</b> line and <b>1925</b> feet from the <b>West</b> line		Producing Formation <b>Atoka</b>		Section <b>320</b>	
Ground Level Elev. <b>3018.6</b>				Well Name <b>Malaga Atoka</b>	

1. Outline the acreage dedicated to the subject well by colored pencil or hachure marks on the plat below.
2. If more than one lease is dedicated to the well, outline each and identify the ownership thereof (both as to working interest and royalty). Please see attached exhibit.
3. If more than one lease of different ownership is dedicated to the well, have the interests of all owners been consolidated by communitization, unitization, force-pooling, etc?

Yes  No If answer is "yes," type of consolidation Communitized

If answer is "no," list the owners and tract descriptions which have actually been consolidated. (If see reverse side of this form if necessary.)

No allowable will be assigned to the well until all interests have been consolidated (by communitization, unitization, forced-pooling, or otherwise) or until a non-standard unit, eliminating such interests, has been approved by the Commission.



CERTIFICATION

I hereby certify that the information contained herein is true and complete to the best of my knowledge and belief.

*Jerry L. Harper*  
 Name

Jerry L. Harper

Position

Operations Superintendent

Company

Aminoil USA, Inc.

Date

December 18, 1980

I hereby certify that the well location shown on this plat was plotted from field notes of actual surveys made by me or under my supervision, and that the same is true and correct to the best of my knowledge and belief.

Date Approved

November 15, 1979

Registered Professional Engineer  
 and Land Surveyor

*John W. West*

Certificate No. JOHN W. WEST 676  
 PATRICK A. ROMERO 6868  
 Ronald J. Edison 3239

