

NEW MEXICO OIL CONSERVATION COMMISSION
WELL LOCATION AND ACREAGE DEDICATION PLAT

All distances must be from the outer boundaries of the Section

RECEIVED BY

MAY 13 1985

Form C-102
Supersedes C-128
Effective 1-1-65

O. C. D.

ARTESIA OFFICE

Operator SANTA FE ENERGY CO.		Lease HENRY		Well No. 2	
Unit Letter I	Section 22	Township 22S	Range 27E	County EDDY	
Actual Footage Location of Well: 1570 feet from the SOUTH line and 990 feet from the EAST line					
Ground Level Elev. 3098.3	Producing Formation Morrow		Pool Undes. S. Carlsbad Morrow	Dedicated Acreage: 320 Acres	

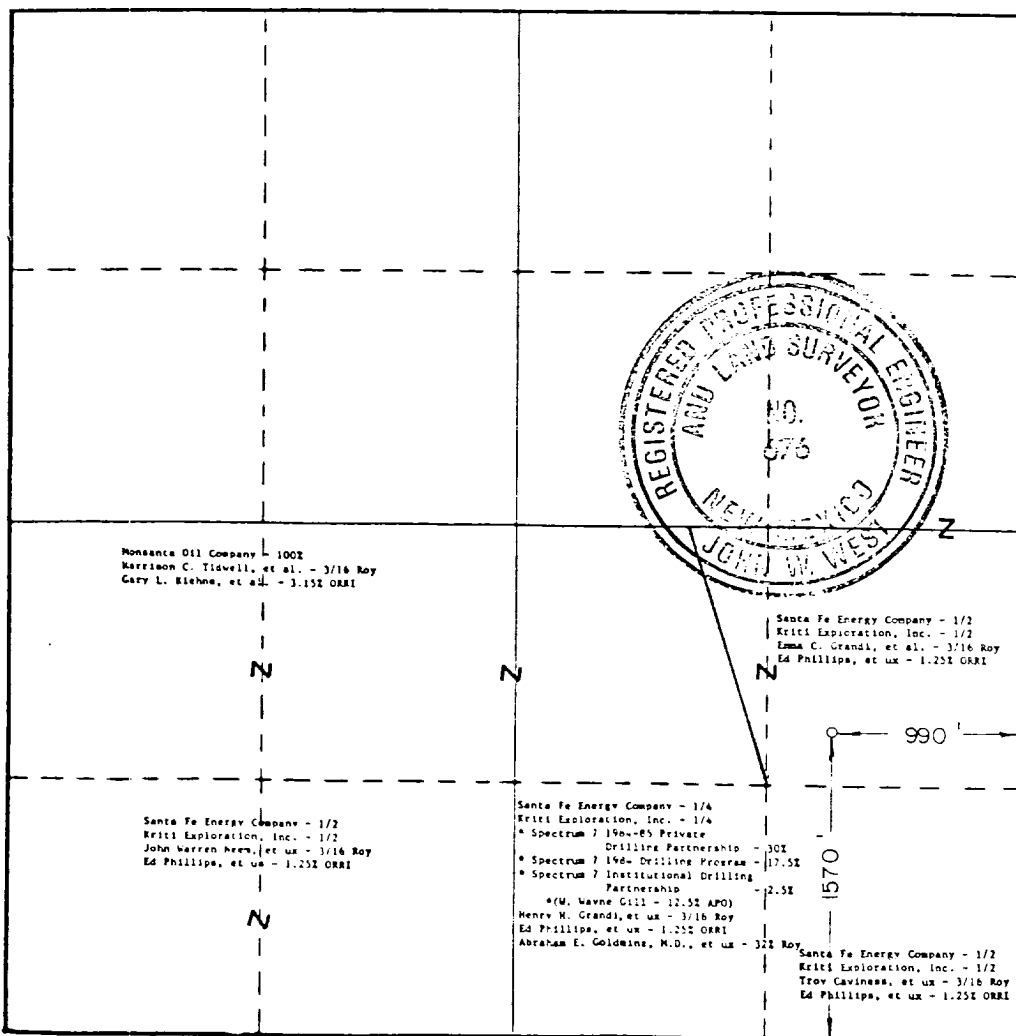
1. Outline the acreage dedicated to the subject well by colored pencil or hatchure marks on the plat below.
2. If more than one lease is dedicated to the well, outline each and identify the ownership thereof (both as to working interest and royalty).
3. If more than one lease of different ownership is dedicated to the well, have the interests of all owners been consolidated by communitization, unitization, force-pooling, etc?

Designation of Consolidated Gas
Leasehold Estate

☒ Yes ☐ No If answer is "yes," type of consolidation

If answer is "no," list the owners and tract descriptions which have actually been consolidated. (Use reverse side of this form if necessary.)

No allowable will be assigned to the well until all interests have been consolidated (by communitization, unitization, forced-pooling, or otherwise) or until a non-standard unit, eliminating such interests, has been approved by the Commission.



CERTIFICATION

I hereby certify that the information contained herein is true and complete to the best of my knowledge and belief.

M. Burton

Name
Mike Burton
Position
Sr. Drilling Engineer
Company
Santa Fe Energy Company
Date
2-11-85

I hereby certify that the well location shown on this plat was plotted from field notes of actual surveys made by me or under my supervision, and that the same is true and correct to the best of my knowledge and belief.

Date Surveyed
2/5/85

Registered Professional Engineer
and/or Land Surveyor

John W. West

Certificate No. JOHN W. WEST, 676