

OIL CONSERVATION DIVISION

P.O. Box 2088

Santa Fe, New Mexico 87504-2088

DISTRICT I

P.O. Box 1980, Hobbs, NM 88240

DISTRICT II

P.O. Drawer DD, Artesia, NM 88210

DISTRICT III

1000 Rio Brazos Rd., Aztec, NM 87410

WELL LOCATION AND ACREAGE DEDICATION PLAT

All Distances must be from the outer boundaries of the section

Operator NEFF OIL & GAS INC.		Lease B H P Federal		Well No. 1
Unit Letter H	Section 13	Township 22 South	Range 27 East NMPM	County Eddy
Actual Footage Location of Well: 1650 feet from the North line and 330 feet from the East line				
Ground level Elev. 3089.4	Producing Formation Cherry Canyon	Pool Und Indian Draw Cherry Canyon		Dedicated Acreage: 40 Acres

1. Outline the acreage dedicated to the subject well by colored pencil or hatchure marks on the plat below.
2. If more than one lease is dedicated to the well, outline each and identify the ownership thereof (both as to working interest and royalty).
3. If more than one lease of different ownership is dedicated to the well, have the interest of all owners been consolidated by communitization, unitization, force-pooling, etc.?
- ☐ Yes ☐ No If answer is "yes" type of consolidation _____
- If answer is "no" list the owners and tract descriptions which have actually been consolidated. (Use reverse side of this form if necessary.) _____
- No allowable will be assigned to the well until all interests have been consolidated (by communitization, unitization, forced-pooling, or otherwise) or until a non-standard unit, eliminating such interest, has been approved by the Division.

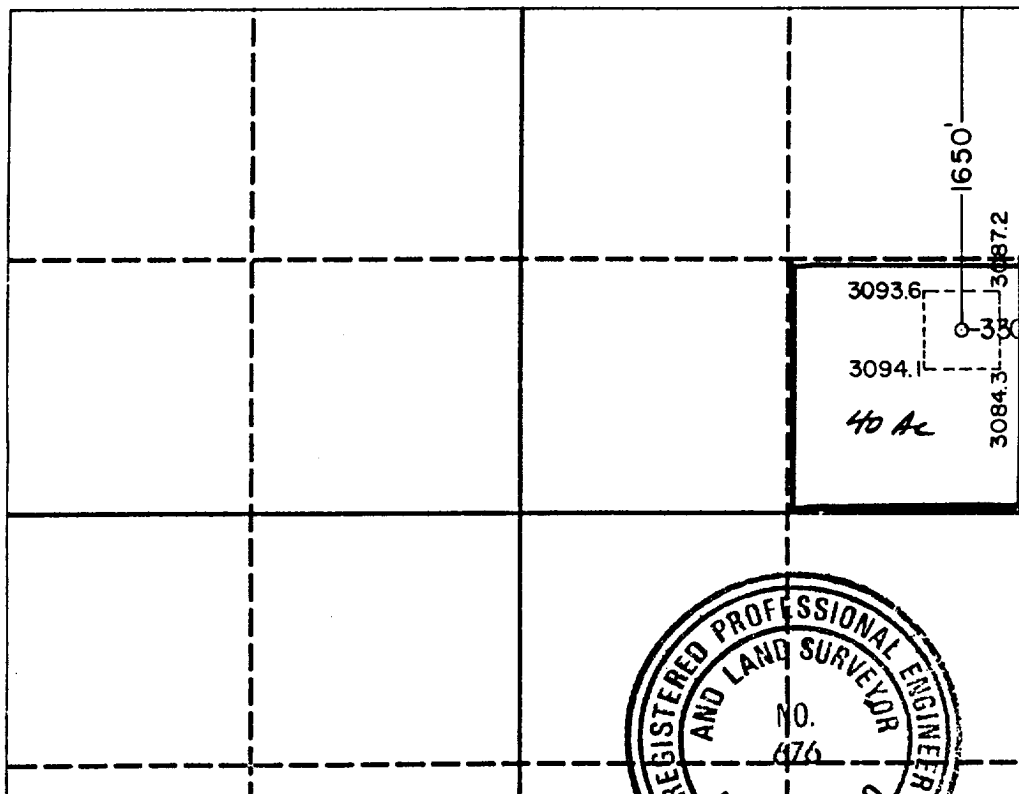


EXHIBIT "B"

ENCLOSURE TO APD
NEFF OIL AND GAS, INC. #1 BHP FEDERAL

SURVEYORS PLAT

OPERATOR CERTIFICATION

I hereby certify that the information contained herein is true and complete to the best of my knowledge and belief.

Signature _____

Printed Name _____

E. Richard Neff

Position

President

Company

Neff Oil and Gas, Inc.

Date _____

3-27-90

SURVEYOR CERTIFICATION

I hereby certify that the well location shown on this plat was plotted from field notes of actual surveys made by me or under my supervision, and that the same is true and correct to the best of my knowledge and belief.

Date Surveyed

March 20, 1990

**Signature & Seal of
Professional Surveyor**

Certificate No.	JOHN W. WEST,	676
	RONALD J. EIDSON,	3239

