

OIL CONSERVATION DIVISION

DISTRICT I
P.O. Box 1980, Hobbs, NM 88240

DISTRICT II
P.O. Drawer DD, Artesia, NM 88210

DISTRICT III
1000 Rio Brazos Rd., Aztec, NM 87410

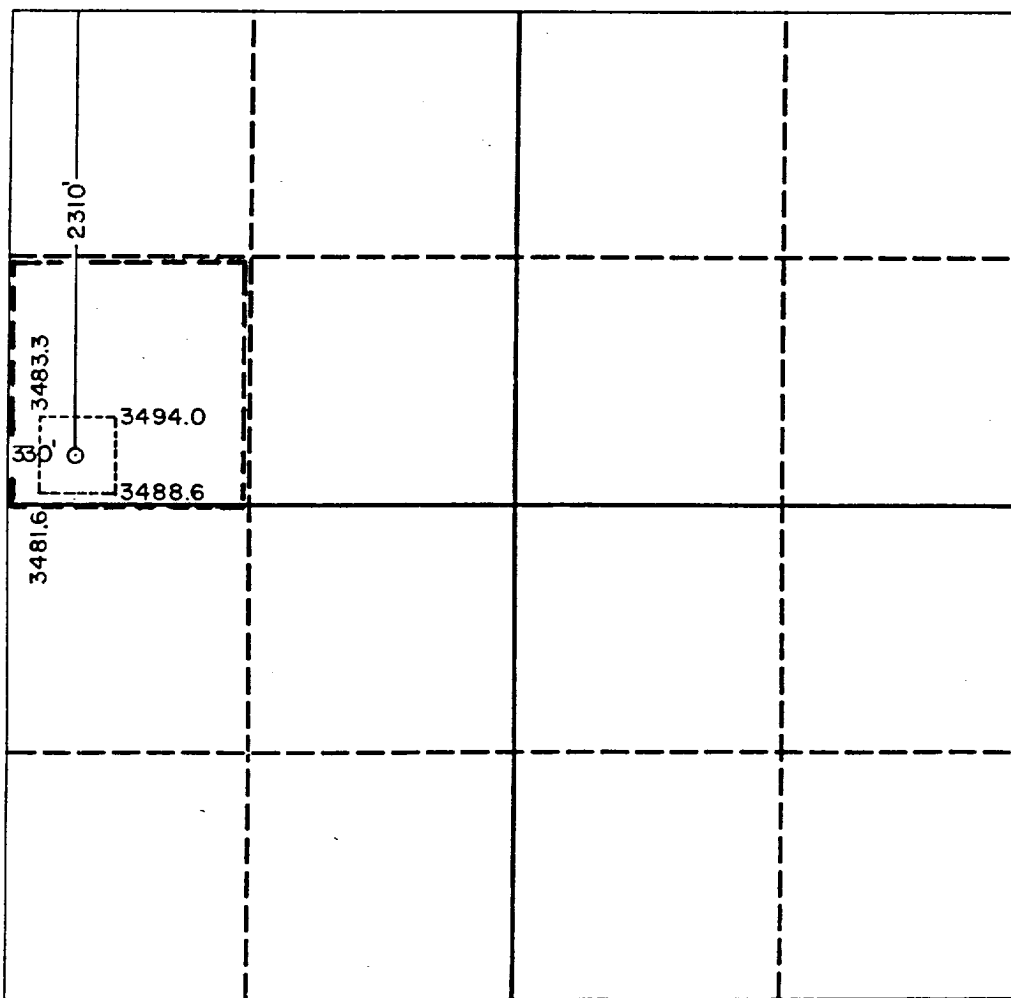
Santa Fe, New Mexico 87504-2088

WELL LOCATION AND ACREAGE DEDICATION PLAT

All Distances must be from the outer boundaries of the section

Operator Pogo Producing Company		Lease Cal-Mon		Well No. 8
Unit Letter E	Section 35	Township 23 South	Range 31 East NMPM	County Eddy
Actual Footage Location of Well: 2310 feet from the North line and 330 feet from the West line				
Ground level Elev. 3487.5	Producing Formation DELAWARE	Pool UNDES. INGLE WELLS DELAWARE	Dedicated Acreage: 40 Acres	

1. Outline the acreage dedicated to the subject well by colored pencil or hatchure marks on the plat below.
2. If more than one lease is dedicated to the well, outline each and identify the ownership thereof (both as to working interest and royalty).
3. If more than one lease of different ownership is dedicated to the well, have the interest of all owners been consolidated by communitization, unitization, force-pooling, etc.?
☐ Yes ☐ No If answer is "yes" type of consolidation _____
- If answer is "no" list the owners and tract descriptions which have actually been consolidated. (Use reverse side of this form if necessary). _____
- No allowable will be assigned to the well until all interests have been consolidated (by communitization, unitization, forced-pooling, or otherwise) or until a non-standard unit, eliminating such interest, has been approved by the Division.



OPERATOR CERTIFICATION

I hereby certify that the information contained herein is true and complete to the best of my knowledge and belief.

Signature

Printed Name _____

Richard L. Wright

Position

Division Operations Supr.

Company	
---------	--

POGO PRODUCING COMPANY

Date _____

July 15, 1992

SURVEYOR CERTIFICATION

I hereby certify that the well location shown on this plat was plotted from field notes of actual surveys made by me or under my supervision, and that the same is true and correct to the best of my knowledge and belief.

Date Surveyed

June 16, 1992

Signature & Seal of
Professional Surveyor

Certificate No. JOHN W. WEST, 676
RONALD J. EIDSON, 3239