

OIL CONSERVATION DIVISION

P.O. Box 2088

Santa Fe, New Mexico 87504-2088

DISTRICT I

P.O. Box 1980, Hobbs, NM 88240

DISTRICT II

P.O. Drawer DD, Artesia, NM 88210

DISTRICT III

1000 Rio Brazos Rd., Artec, NM 87410

WELL LOCATION AND ACREAGE DEDICATION PLAT

All Distances must be from the outer boundaries of the section

REVISED

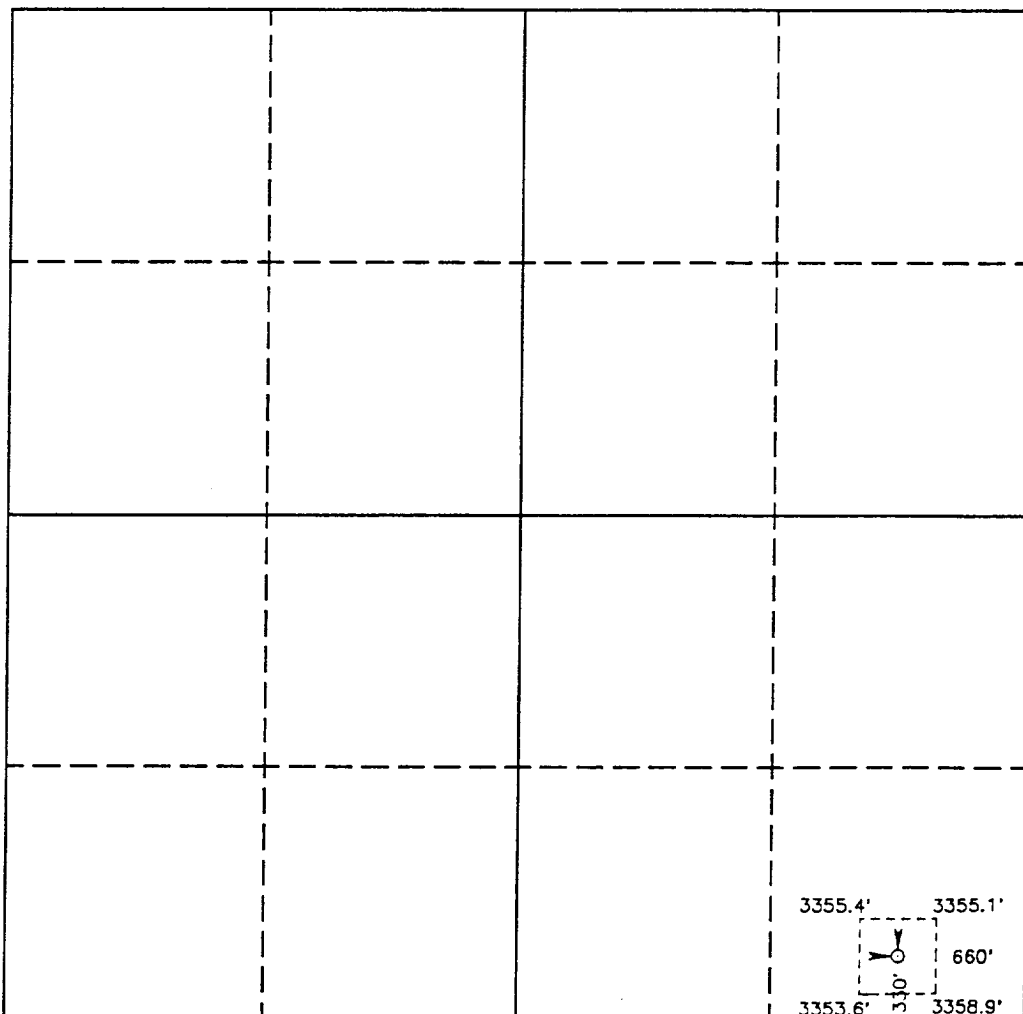
Operator POGO PRODUCING COMPANY		Lease MOBIL FEDERAL		Well No. 7	
Unit Letter P	Section 29	Township 23 SOUTH	Range 31 EAST NMPM	County EDDY	
Actual Footage Location of Well: 330 feet from the SOUTH line and 660 feet from the EAST line					
Ground Level Elev. 3356.6'	Producing Formation DELAWARE		Pool UNDESIGNATED DELAWARE	Dedicated Acreage: 40 Acres	

1. Outline the acreage dedicated to the subject well by colored pencil or hatchure marks on the plat below.
2. If more than one lease is dedicated to the well, outline each and identify the ownership thereof (both as to working interest and royalty).
3. If more than one lease of different ownership is dedicated to the well, have the interest of all owners been consolidated by communitization, unitization, force-pooling, etc.?

☐ Yes ☐ No If answer is "yes" type of consolidation _____

If answer is "no" list of owners and tract descriptions which have actually been consolidated. (Use reverse side of this form necessary. _____)

No allowable will be assigned to the well unit all interests have been consolidated (by communitization, unitization, forced-pooling, otherwise) or until a non-standard unit, eliminating such interest, has been approved by the Division.



OPERATOR CERTIFICATION

I hereby certify the the information contained herein is true and complete to the best of my knowledge and belief.

Signature _____

Printed Name

Richard L. Wright

Position

Division Operations Supr.

Company

POGO PRODUCING COMPANY

Date

July 17, 1992

SURVEYOR CERTIFICATION

I hereby certify that the well location shown on this plat was plotted from field notes of actual surveys made by me or under my supervision, and that the same is true and correct to the best of my knowledge and belief.

Date Surveyed

JULY 16, 1992

Signature & Seal of Professional Surveyor

JOHN W. WEST, 676
JOHN W. WEST, 3239
JOHN W. WEST, 7977

92-11-0985