

State of New Mexico  
Energy, Minerals and Natural Resources Department

Form C-102  
Revised 1-1-89

OIL CONSERVATION DIVISION

P.O. Box 2088  
Santa Fe, New Mexico 87504-2088

Exhibit No. 2  
Apache "25" Federal No. 1  
Eddy County, New Mexico

Submit to Appropriate  
District Office  
Data Lease - 4 copies  
Data Lease - 3 copies

DISTRICT I  
P.O. Box 1980, Hobbs, NM 88240

DISTRICT II  
P.O. Drawer DD, Artesia, NM 88210

DISTRICT III  
P.O. Rio Brazos Rd., Aztec, NM 87410

WELL LOCATION AND ACREAGE DEDICATION PLAT

All Distances must be from the outer boundaries of the section

Operator MITCHELL ENERGY Corporation			Lease APACHE 25 FEDERAL		Well No. #1
Unit Letter H	Section 25	Township 22S.	Range 30E.	County EDDY	
Actual Footage Location of Well: 1730 feet from the NORTH line and 660 feet from the EAST line					
Ground level Elev. 3366	Producing Formation Morrow		Pool Wildcat	Dedicated Acreage: 320 Acres	

1. Outline the acreage dedicated to the subject well by colored pencil or hatchure marks on the plat below.

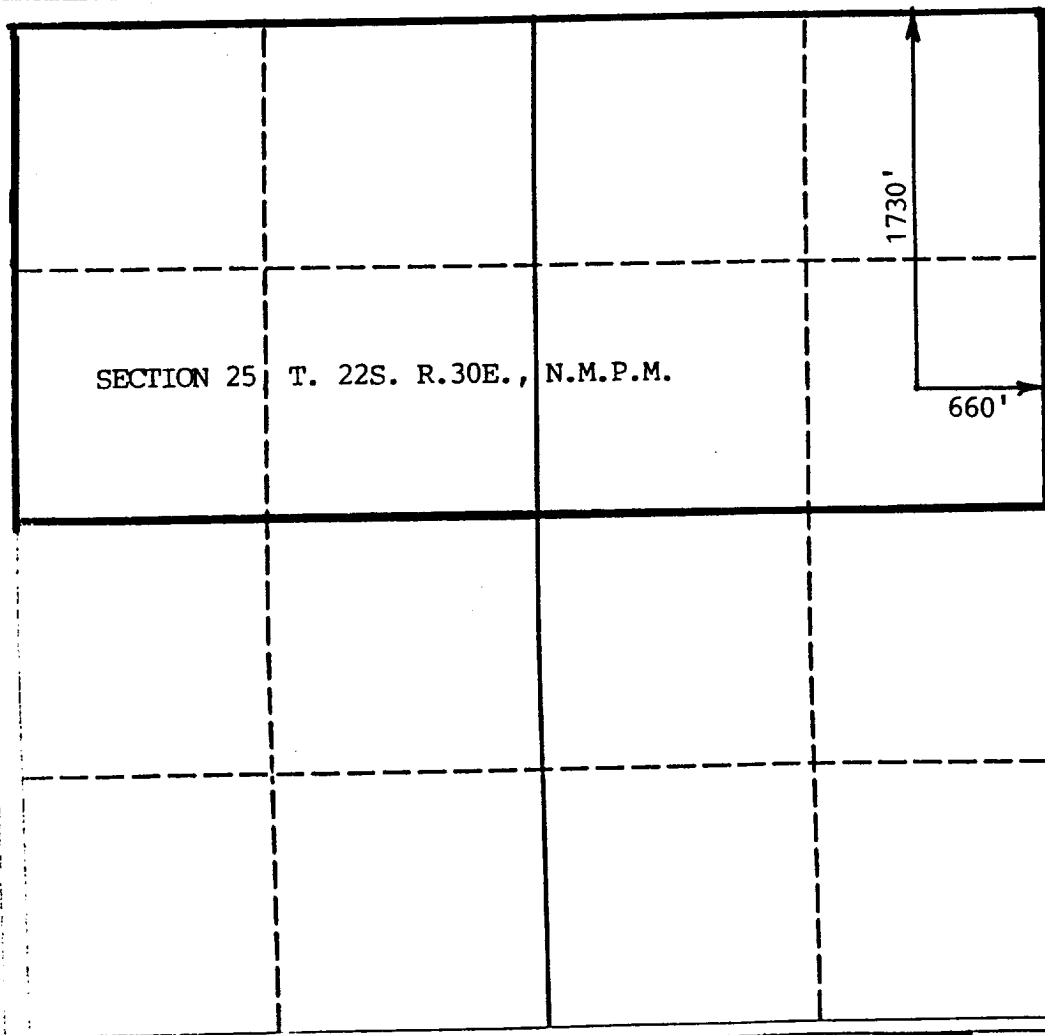
2. If more than one lease is dedicated to the well, outline each and identify the ownership thereof (both as to working interest and royalty).

3. If more than one lease of different ownership is dedicated to the well, have the interest of all owners been consolidated by communitization, unitization, force-pooling, etc.?

☐ Yes ☐ No If answer is "yes" type of consolidation

If answer is "no" list the owners and tract descriptions which have actually been consolidated. (Use reverse side of this form if necessary.)

No allowable will be assigned to the well until all interests have been consolidated (by communitization, unitization, forced-pooling, or otherwise) or until a non-standard unit, eliminating such interest, has been approved by the Division.



OPERATOR CERTIFICATION

I hereby certify that the information contained herein is true and complete to the best of my knowledge and belief.

Signature  
*George Mullen*  
Printed Name  
George Mullen  
Position  
Reg. Affairs Specialist  
Company  
Mitchell Energy Corp.  
Date  
November 25, 1992

SURVEYOR CERTIFICATION

I hereby certify that the well location shown on this plat was plotted from field notes of actual surveys made by me or under my supervision, and that the same is true and correct to the best of my knowledge and belief.

Date Surveyed  
11/19/92  
Signature & Seal of Professional Surveyor  
*[Signature]*  
Certificate No.  
6290  
NEW MEXICO  
PROFESSIONAL SURVEYOR