

UNITED STATES
DEPARTMENT OF THE INTERIOR
BUREAU OF LAND MANAGEMENT

OIL CONSERVATION DIV
811 S. 1ST ST.
ARTESIA, NM 88210-2834

FORM APPROVED
Budget Bureau No. 1004-0135
Expires March 31, 1993

SUNDRY NOTICES AND REPORTS ON WELLS

Do not use this form for proposals to drill or to deepen or reentry to a different reservoir.
Use "APPLICATION FOR PERMIT—" for such proposals

SUBMIT IN TRIPLICATE

1. Type of Well
☐ Oil Well ☐ Gas Well ☐ Other proposed oil well

2. Name of Operator
DEVON ENERGY CORPORATION (NEVADA)

3. Address and Telephone No.

20 NORTH BROADWAY, SUITE 1500, OKLAHOMA CITY, OKLAHOMA 73102 (405) 234-3811

4. Location of Well (Footage, Sec., T., R., M., or Survey Description)

1980' FNL & 660' FEL Unit H Section 24-T23S-R31E
990

RECEIVED

SEP 09 1996

OIL CON. DIV.
DIST. 2

5. Lease Designation and Serial No.

NM0533177-A

6. If Indian, Allottee or Tribe Name

N/A

7. If Unit or CA, Agreement Designation

N/A

8. Well Name and No.

Todd "24H" Federal #8

9. API Well No.

30-015-27693

10. Field and Pool, or Exploratory Area

Ingle Wells (Delaware)

11. County or Parish, State

Eddy Cnty, NM

CHECK APPROPRIATE BOX(s) TO INDICATE NATURE OF NOTICE, REPORT, OR OTHER DATA

TYPE OF SUBMISSION

TYPE OF ACTION

- ☐ Notice of Intent
☒ Subsequent Report
☐ Final Abandonment Notice

- ☐ Abandonment
☐ Recompletion
☐ Plugging Back
☐ Casing Repair
☐ Altering Casing
☒ Other move well location

- ☐ Change of Plans
☐ New Construction
☐ Non-Routine Fracturing
☐ Water Shut-Off
☐ Conversion to Injection
☐ Dispose Water

(Note: Report results of multiple completion on Well Completion or Recompletion Report and Log form.)

13. Describe Proposed or Completed Operations (Clearly state all pertinent details, and give pertinent dates, including estimated date of starting any proposed work. If well is directionally drilled, give subsurface locations and measured and true vertical depths for all markers and zones pertinent to this work.)*

The BLM previously approved, and then extended, an APD on the referenced well. At this time, we wish to move this location 330' west of its original location. The legal for the new location is 1980' FNL & 990' FEL. This move is well within the range allowed by the BLM at 43CFR Sec. 3101.1-2.

14. I hereby certify that the foregoing is true and correct

Signed Candace R. Graham

Title CANDACE R. GRAHAM
ENGINEERING TECH.

Date 7/8/96

(This space for Federal or State office use)

Approved by (ORIG. SGD.) RICHARD L. MANUS

Title Aron Manoff

Date SEP 4 1996

Conditions of approval, if any:

Title 18 U.S.C. Section 1001, makes it a crime for any person knowingly and willfully to make to any department or agency of the United States any false, fictitious or fraudulent statements or representations as to any matter within its jurisdiction.

*See Instruction on Reverse Side

DISTRICT I
P. O. Box 1980
Hobbs, NM 88241-1980

State of New Mexico
Energy, Minerals, and Natural Resources Department

Form C-102
Revised 02-10-94
Instructions on back

DISTRICT II
P. O. Drawer DD
Artesia, NM 88211-0719

DISTRICT III
1000 Rio Brazos Rd.
Aztec, NM 87410

DISTRICT IV
P. O. Box 2088
Santa Fe, NM 87507-2088

OIL CONSERVATION DIVISION

P. O. Box 2088
Santa Fe, New Mexico 87504-2088

RECEIVED
AUG 5 9 57 AM '96
Submit to the Appropriate
District Office
State Lease - 4 copies
Fee Lease - 3 copies

AMENDED REPORT

WELL LOCATION AND ACREAGE DEDICATION PLAT

1 API Number	2 Pool Code 33745	3 Pool Name Ingle Wells (Delaware)
4 Property Code	5 Property Name TODD '24 ^H FEDERAL	6 Well Number 8
7 OGRID No. 6137	8 Operator Name DEVON ENERGY CORPORATION (NEVADA)	9 Elevation 3555'

10 SURFACE LOCATION

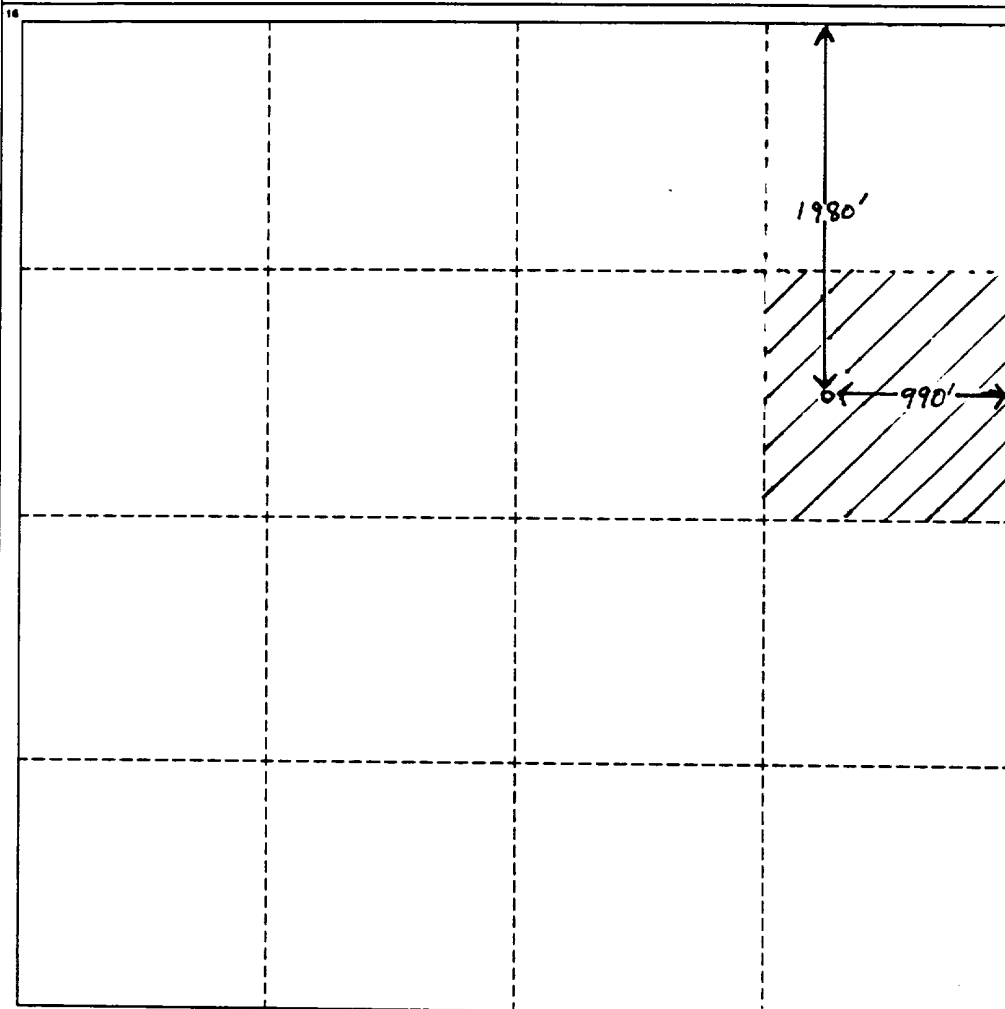
UL or lot no.	Section	Township	Range	Lot Ida	Feet from the	North/South line	Feet from the	East/West line	County
H	24	23 SOUTH	31 EAST, N.M.P.M.		1980'	NORTH	990'	EAST	EDDY

"BOTTOM HOLE LOCATION IF DIFFERENT FROM SURFACE

UL or lot no.	Section	Township	Range	Lot Ida	Feet from the	North/South line	Feet from the	East/West line	County

12 Dedicated Acres 40	13 Joint or Infill	14 Consolidation Code	15 Order No.
--------------------------	--------------------	-----------------------	--------------

NO ALLOWABLE WELL BE ASSIGNED TO THIS COMPLETION UNTIL ALL INTERESTS HAVE BEEN CONSOLIDATED OR A NON-STANDARD UNIT HAS BEEN APPROVED BY THE DIVISION



OPERATOR CERTIFICATION

I hereby certify that the information contained herein is true and complete to the best of my knowledge and belief.

Signature
Candace R. Graham

Printed Name
Candace R. Graham

Title
Engineering Tech.

Date
08-01-96

SURVEYOR CERTIFICATION

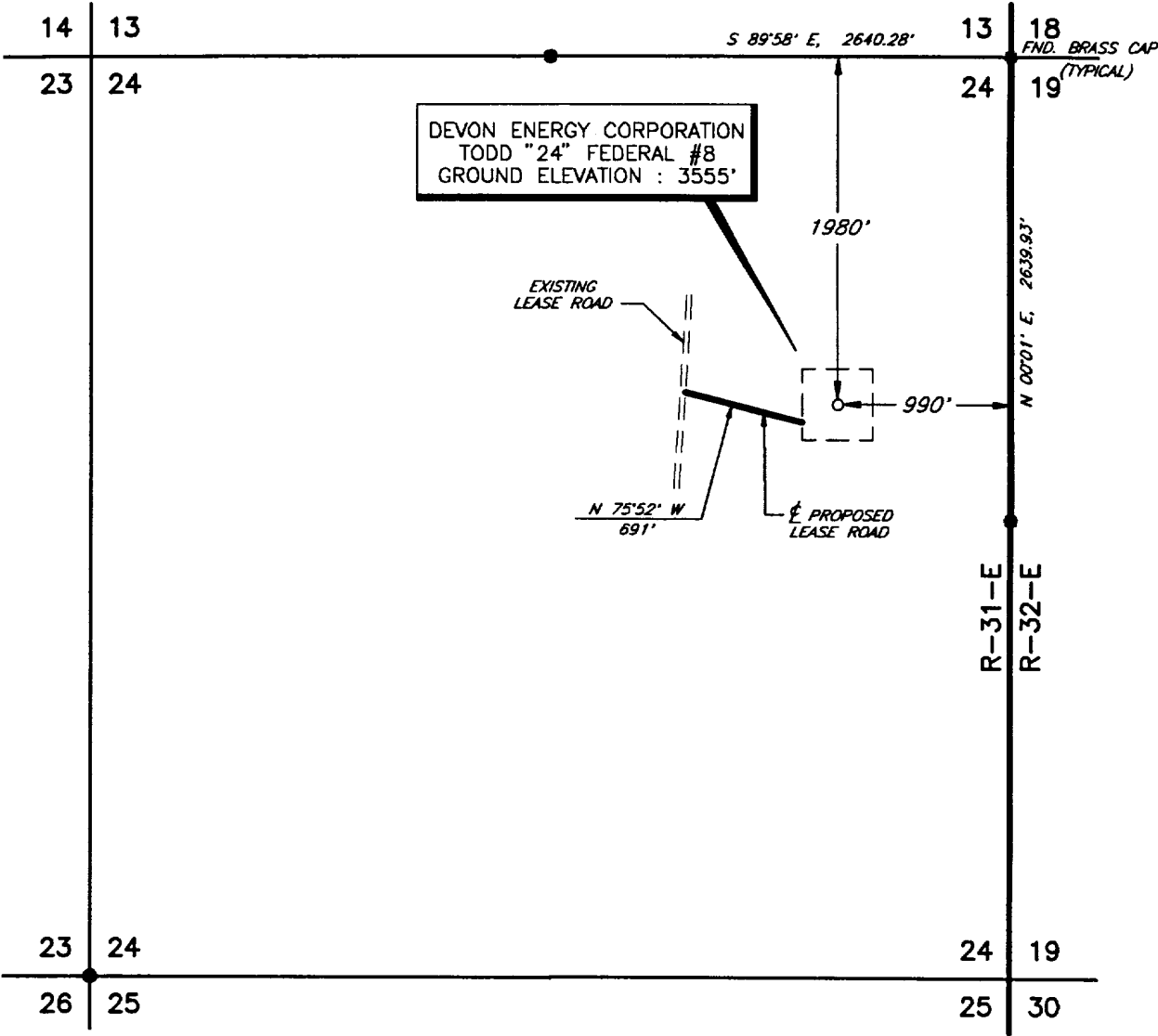
I hereby certify that the well location shown on this plat was plotted from field notes of actual surveys made by me or under my supervision, and that the same is true and correct to the best of my belief.

Date of Survey
JULY 10, 1996

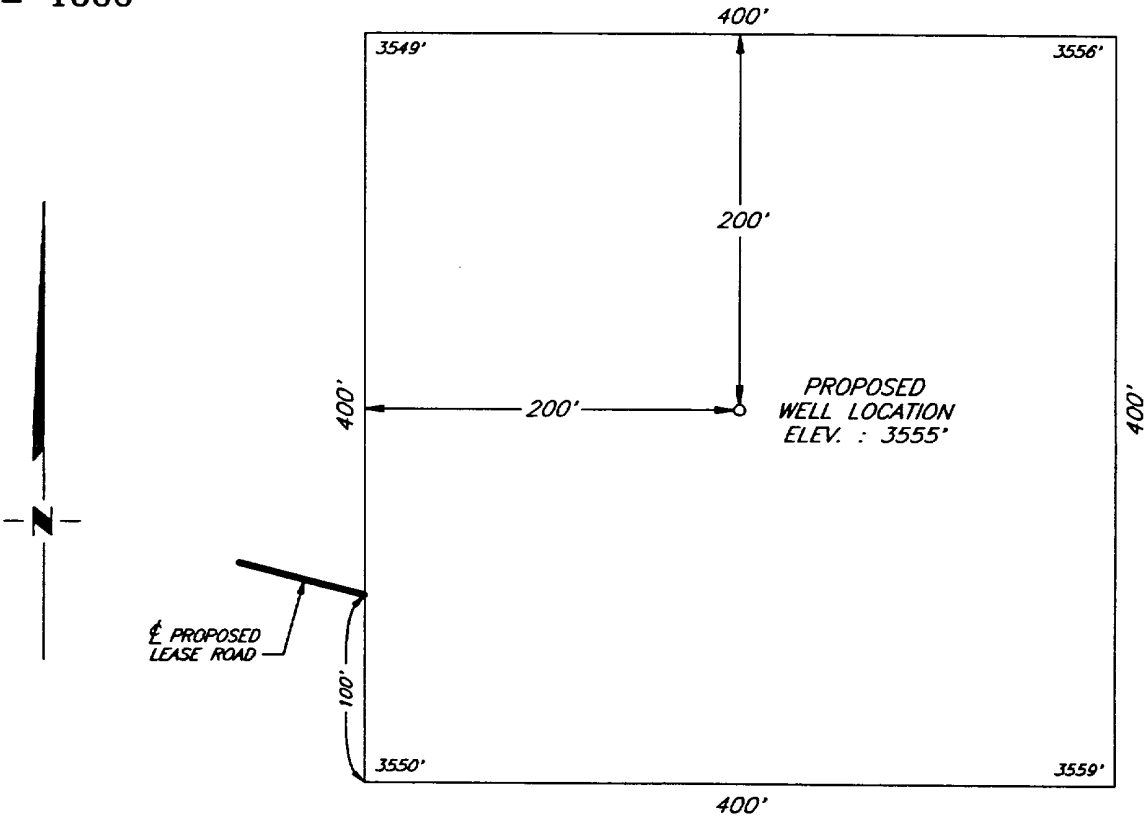
Signature and Seal of Professional Surveyor

Certification No.
V. L. BEZNER, P.E.S. #7920
JOB #4544 LAND SURV. V.H.B.

PLAT SHOWING PROPOSED
WELL LOCATION AND LEASE ROAD IN
SECTION 24, T-23-S, R-31-E, N.M.P.M.
EDDY COUNTY, NEW MEXICO



PLAN VIEW
1" = 1000'



DETAIL VIEW
1" = 100'

NO.	REVISION	DATE	BY

DEVON ENERGY CORPORATION	
SURVEYING AND MAPPING BY	
TOPOGRAPHIC LAND SURVEYORS	
MIDLAND, TEXAS	

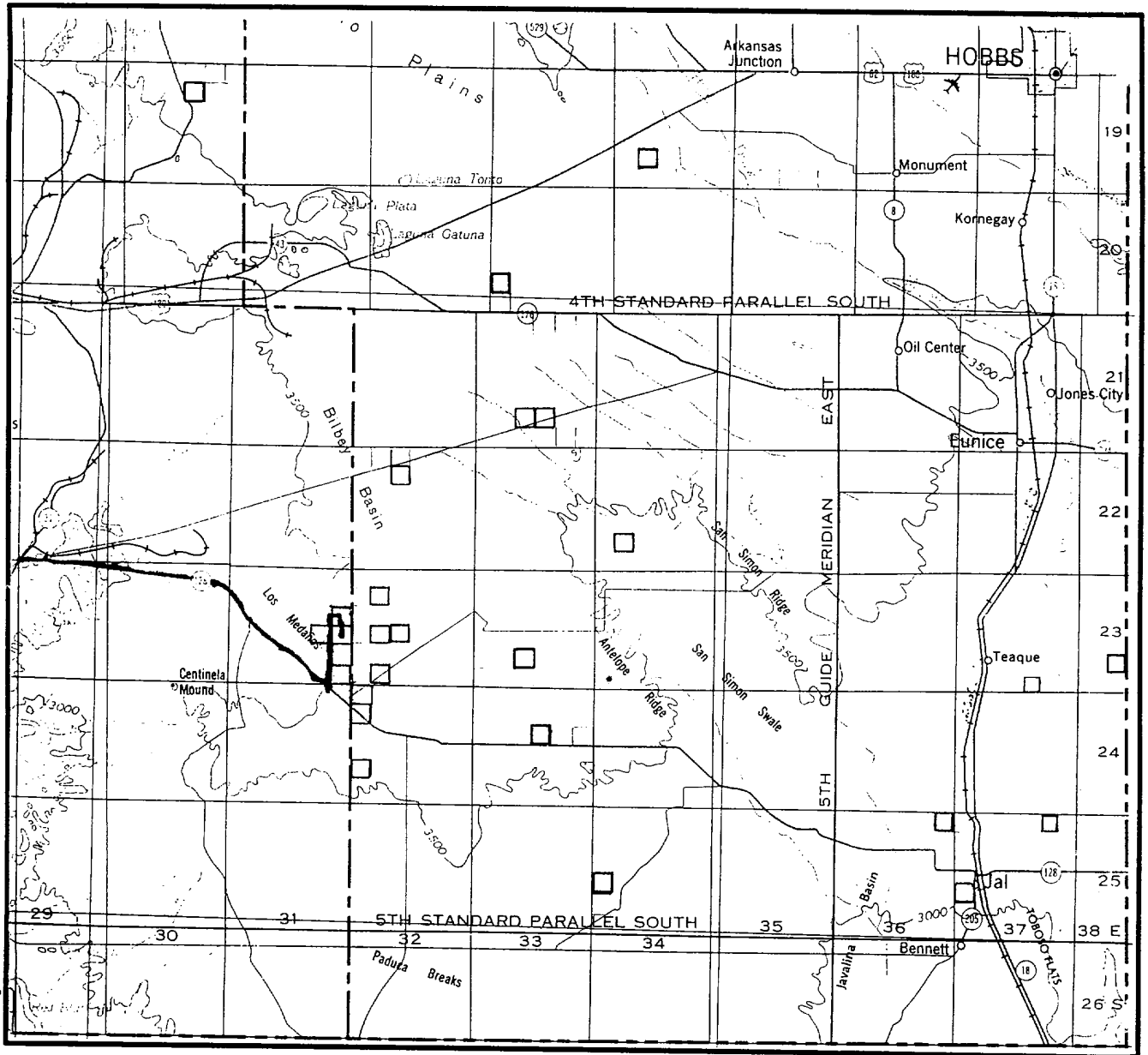
SCALE:	AS SHOWN
DATE:	JULY 10, 1996
JOB NO.:	46414-F
	47 SW
SHEET :	1 OF 1

RECEIVED

JUL 22 12 12 PM '96

CARLSB. FORCE
AREA HER. OFFERS

VICINITY MAP



SECTION 24 TWP 23-S RGE 31-E
 SURVEY NEW MEXICO PRINCIPAL MERIDIAN
 COUNTY EDDY STATE NM
 DESCRIPTION 1980' FNL & 990' FEL

OPERATOR DEVON ENERGY CORPORATION
 LEASE TODD "24" FEDERAL #8

DISTANCE & DIRECTION FROM JCT. OF STATE HWY. 128
& STATE HWY. 31, ±52 MILES WEST OF JAL, GO EAST
17.8 MILES ON STATE HWY. 128, THENCE NORTH 3.7
MILES ON COUNTY ROAD 798, THENCE EAST 0.8 MILE
ON LEASE ROAD, THENCE SOUTH 1.0 MILE ON LEASE
ROAD TO A POINT ±900' WEST OF THE LOCATION.



This location has been very carefully staked on the ground according to the best official survey records, maps, and other data available to us.
 Review this plat and notify us immediately of any possible discrepancy.

TOPOGRAPHIC LAND SURVEYORS

Surveying & Mapping for the Oil & Gas Industry

1307 N. HOBART
 PAMPA, TX. 79065
 (800) 658-6382

6709 N. CLASSEN BLVD.
 OKLAHOMA CITY, OK. 73116
 (800) 654-3219

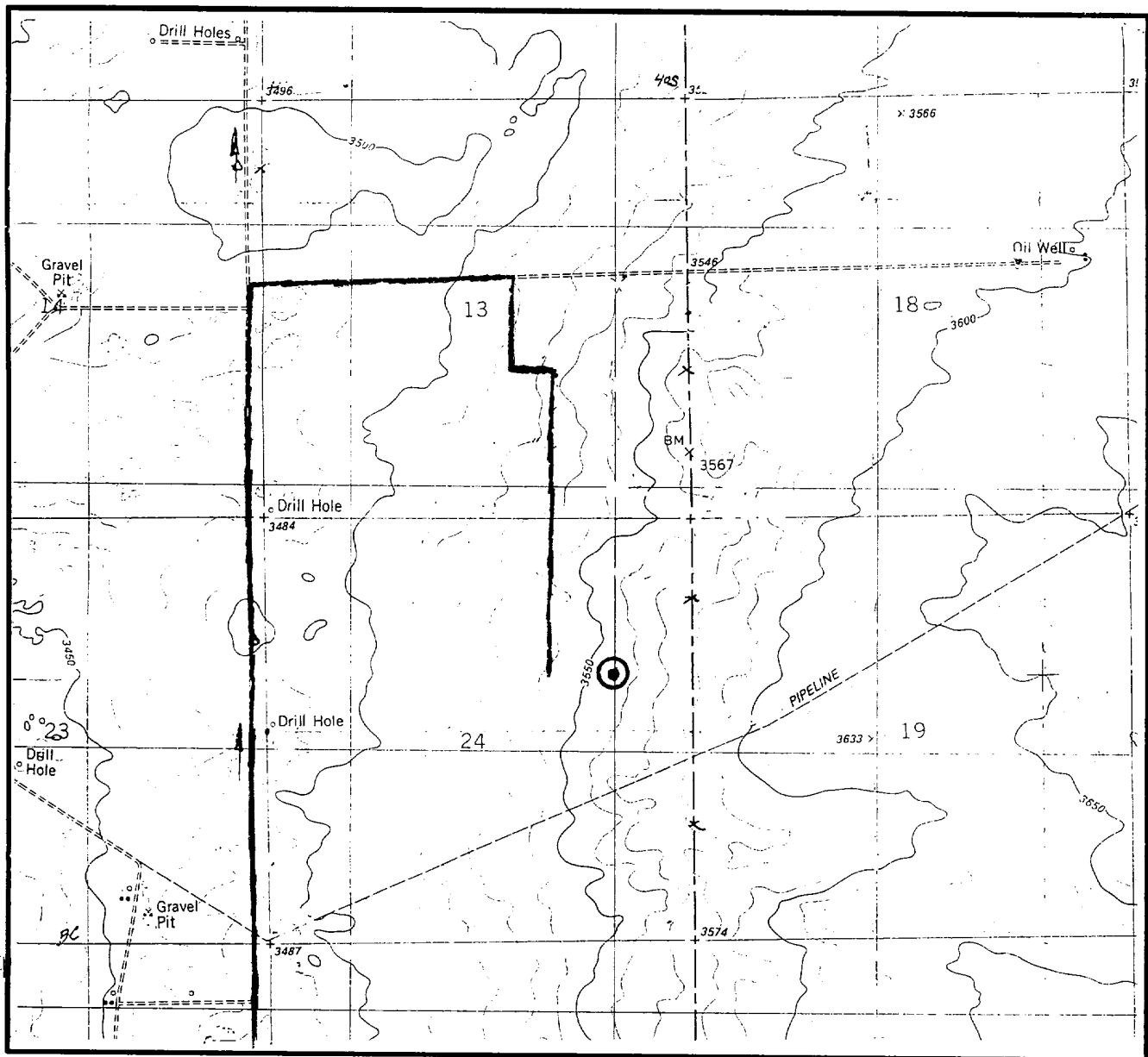
2903 N. BIG SPRING
 MIDLAND, TX. 79705
 (800) 767-1653

RECEIVED

JUL 22 12 12 PM '96

CARLE
AREA HEADQUARTERS

LOCAT. N & ELEVATION VERIFICATION MAP



SCALE : 1" = 2000'

CONTOUR INTERVAL 10'

SECTION 24 TWP 23-S RGE 31-E

SURVEY NEW MEXICO PRINCIPAL MERIDIAN

COUNTY EDDY STATE NM

DESCRIPTION 1980' FNL & 990' FEL

ELEVATION 3555'

OPERATOR DEVON ENERGY CORPORATION

LEASE TODD "24" FEDERAL #8

U.S.G.S. TOPOGRAPHIC MAP

BOOTLEG RIDGE, NEW MEXICO

SCALED LAT. N 32°17'30"

LONG. W 103°43'32"



This location has been very carefully staked on the ground according to the best official survey records, maps, and other data available to us.
Review this plat and notify us immediately of any possible discrepancy.

TOPOGRAPHIC LAND SURVEYORS

Surveying & Mapping for the Oil & Gas Industry

1307 N. HOBART
PAMPA, TX. 79065
(800) 658-6382

6709 N. CLASSEN BLVD.
OKLAHOMA CITY, OK. 73116
(800) 654-3219

2903 N. BIG SPRING
MIDLAND, TX. 79705
(800) 767-1653

RECEIVED

JUL 22 12 11 PM '96

CARL... DE
AREA... PERS