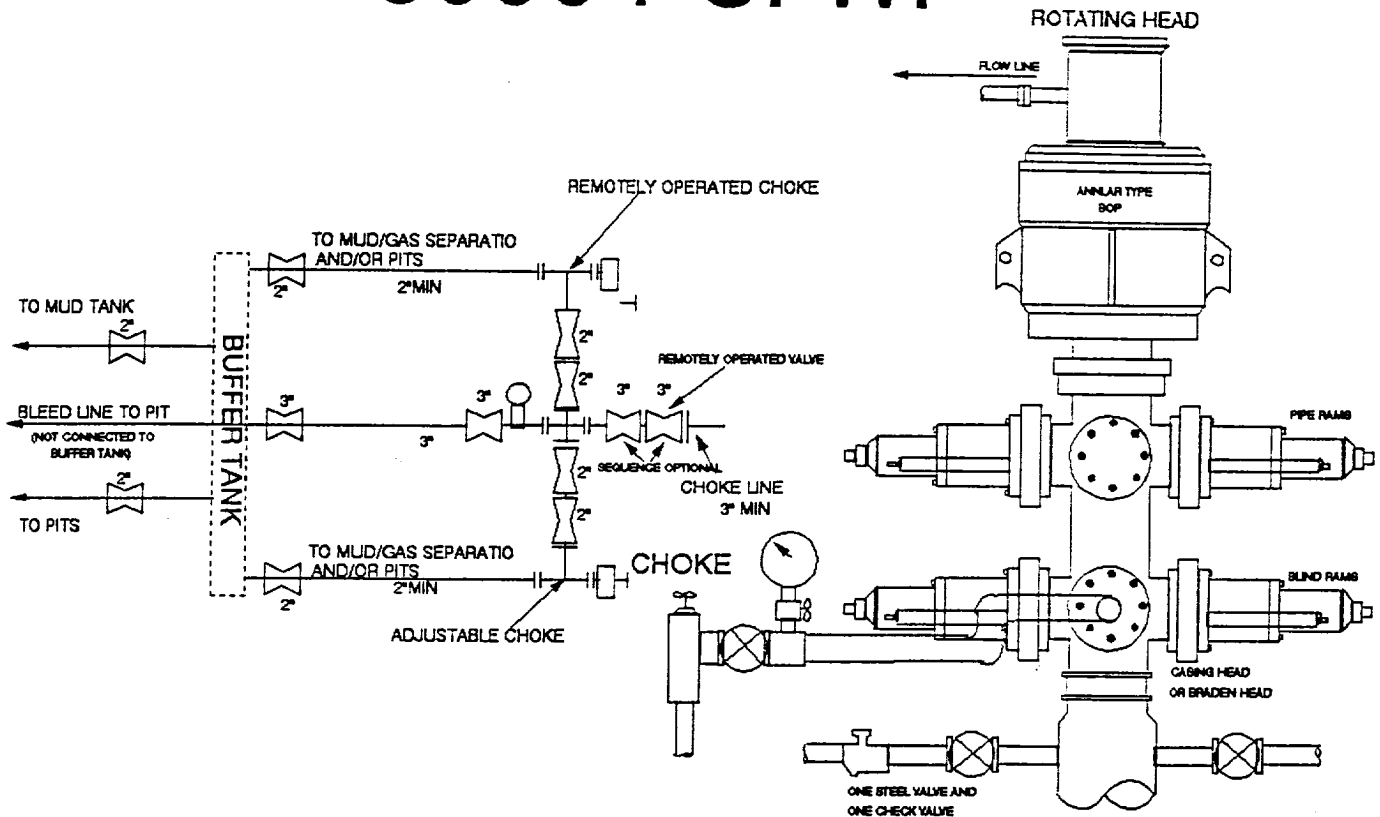


# 5000 PSI WP



## THE FOLLOWING CONSTITUTE MINIMUM BLOWOUT PREVENTER REQUIREMENTS

- A. One double gate blowout preventer with lower rams for pipe and upper rams blind, all hydraulically controlled.
- B. Opening on preventers between rams to be flanged, studded or clamped and at least two inches in diameter.
- C. All connections from operating manifold to preventers to be all steel hose or tube a minimum of one inch in diameter
- D. The available closing pressure shall be required with sufficient volume to operate preventers.
- E. All connections to and from preventer equivalent to that of the BOP's.
- F. Manual controls to be installed before d. ....
- G. Valve to control flow through drill pipe to be located on rig floor.
- H. Choke may be either positive or adjustable. Choke spool may be used between rams.

*DIAGRAM 1*

of that  
(se) the

rating

DIAGRAM I