

OWNERSHIP

Tract 1: NW/4 Sec. 19, T23S, R29E

SFEOP, L.P. - 100% WI
(Amoco Farmout)

Teledyne Potash, Inc. - 3/16 R.I.

Tract 2: SW/4 Sec. 19, T23S, R29E

Texaco Expl. & Prod., Inc. - 100% WI

D. Stuart Harroun, Jr. Trustee, et al - 3/16 R.I.

District I
PO Box 1980, Hobbs, NM 88241-1980
District II
PO Drawer DD, Artesia, NM 88211-0719
District III
1000 Rio Brazos Rd., Aztec, NM 87410
District IV
PO Box 2088, Santa Fe, NM 87504-2088

State of New Mexico
Energy, Minerals & Natural Resources Department

OIL CONSERVATION DIVISION
PO Box 2088
Santa Fe, NM 87504-2088

Form C-102
Revised February 21, 1994
Instructions on back
Submit to Appropriate District Office
State Lease - 4 Copies
Fee Lease - 3 Copies

☐ AMENDED REPORT

WELL LOCATION AND ACREAGE DEDICATION PLAT

¹ API Number 30-015-28165	² Pool Code 79860	³ Pool Name LAGUNA SALADO; UNDESIGNATED (ATOKA)
⁴ Property Code	⁵ Property Name HARROUN TRUST '19'	⁶ Well Number 1
⁷ OGRID No.	⁸ Operator Name SANTA FE ENERGY OPERATING PARTNERS, L.P.	⁹ Elevation 2969

¹⁰ Surface Location

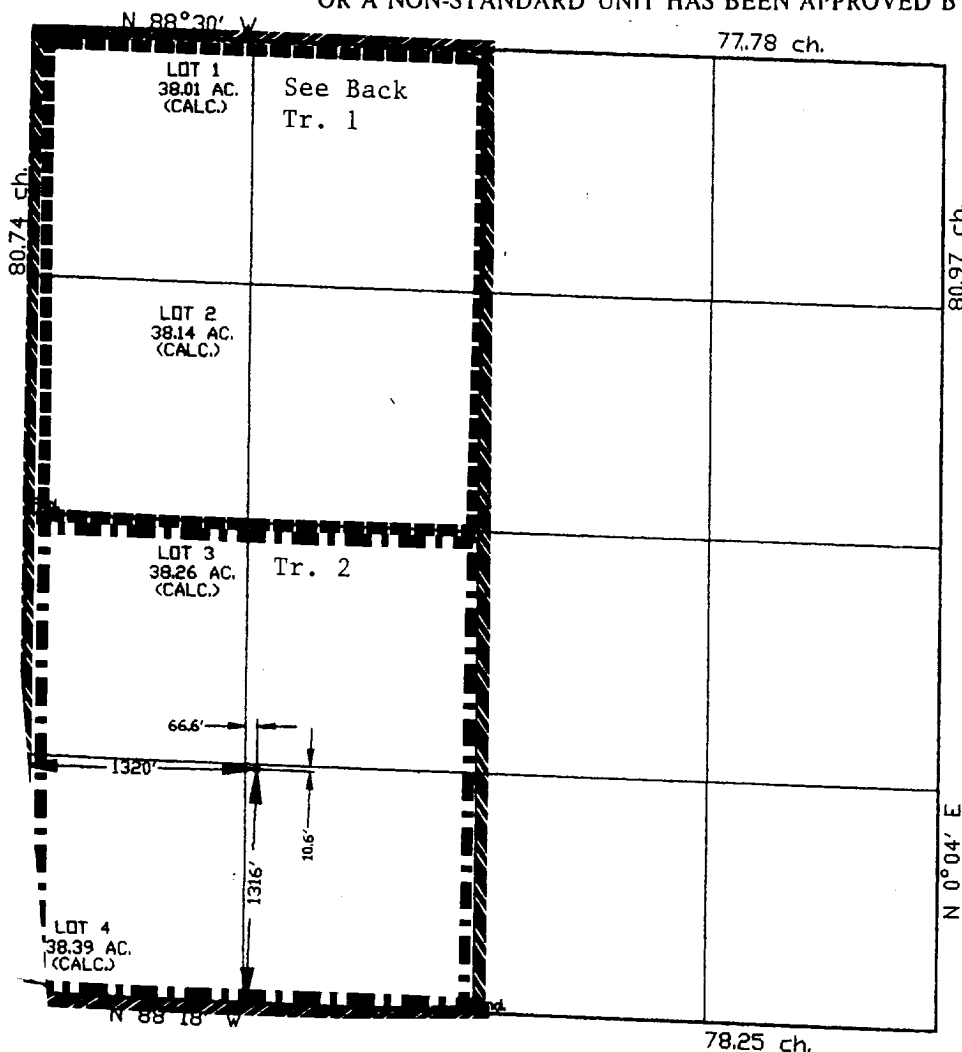
UL or lot no.	Section	Township	Range	Lot Idn	Feet from the	North/South line	Feet from the	East/West line	County
N	19	23 S	29 E		1316	SOUTH	1320	WEST	EDDY

¹¹ Bottom Hole Location If Different From Surface

UL or lot no.	Section	Township	Range	Lot Idn	Feet from the	North/South line	Feet from the	East/West line	County

¹² Dedicated Acres 320	¹³ Joint or Infill N	¹⁴ Consolidation Code O	¹⁵ Order No. CASE NO. 11070 ORDER - 10181
--------------------------------------	------------------------------------	---------------------------------------	---

NO ALLOWABLE WILL BE ASSIGNED TO THIS COMPLETION UNTIL ALL INTERESTS HAVE BEEN CONSOLIDATED
OR A NON-STANDARD UNIT HAS BEEN APPROVED BY THE DIVISION



¹⁷ OPERATOR CERTIFICATION

I hereby certify that the information contained herein is true and complete to the best of my knowledge and belief

Darrell Roberts
Signature

DARRELL ROBERTS
Printed Name

DIVISION DRILLING ENGR.
Title

10/21/99
Date

¹⁸ SURVEYOR CERTIFICATION

I hereby certify that the well location shown on this plat was plotted from field notes of actual surveys made by me or under my supervision, and that the same is true and correct to the best of my belief.

JULY 23, 1994

Date of Survey

Signature and Seal of Professional Surveyor

William E. Mahnke II
WILLIAM E. MAHNKE II
Certificate Number 8466

