

District I  
PO Box 1980, Hobbs, NM 88241-1980  
District II  
PO Drawer DD, Artesia, NM 88211-0719  
District III  
1000 Rio Brazos Rd., Aztec, NM 87410  
District IV  
PO Box 2088, Santa Fe, NM 87504-2088

State of New Mexico  
Energy, Minerals & Natural Resources Department

OIL CONSERVATION DIVISION  
PO Box 2088  
Santa Fe, NM 87504-2088

Form C-102  
Revised February 21, 1994  
Instructions on back  
Submit to Appropriate District Office  
State Lease - 4 Copies  
Fee Lease - 3 Copies

☐ AMENDED REPORT

WELL LOCATION AND ACREAGE DEDICATION PLAT

1 API Number Unassigned		2 Pool Code		3 Pool Name Willow Lake (Delaware)	
4 Property Code		5 Property Name WILLOW LAKE '25'			6 Well Number 1
7 OGRID No. 26485		8 Operator Name MERIDIAN OIL INC.			9 Elevation 2919

10 Surface Location

UL or lot no. 0	Section 25	Township 24 S	Range 28 E	Lot Idn	Feet from the 990	North/South line SOUTH	Feet from the 1650	East/West line EAST	County EDDY
--------------------	---------------	------------------	---------------	---------	----------------------	---------------------------	-----------------------	------------------------	----------------

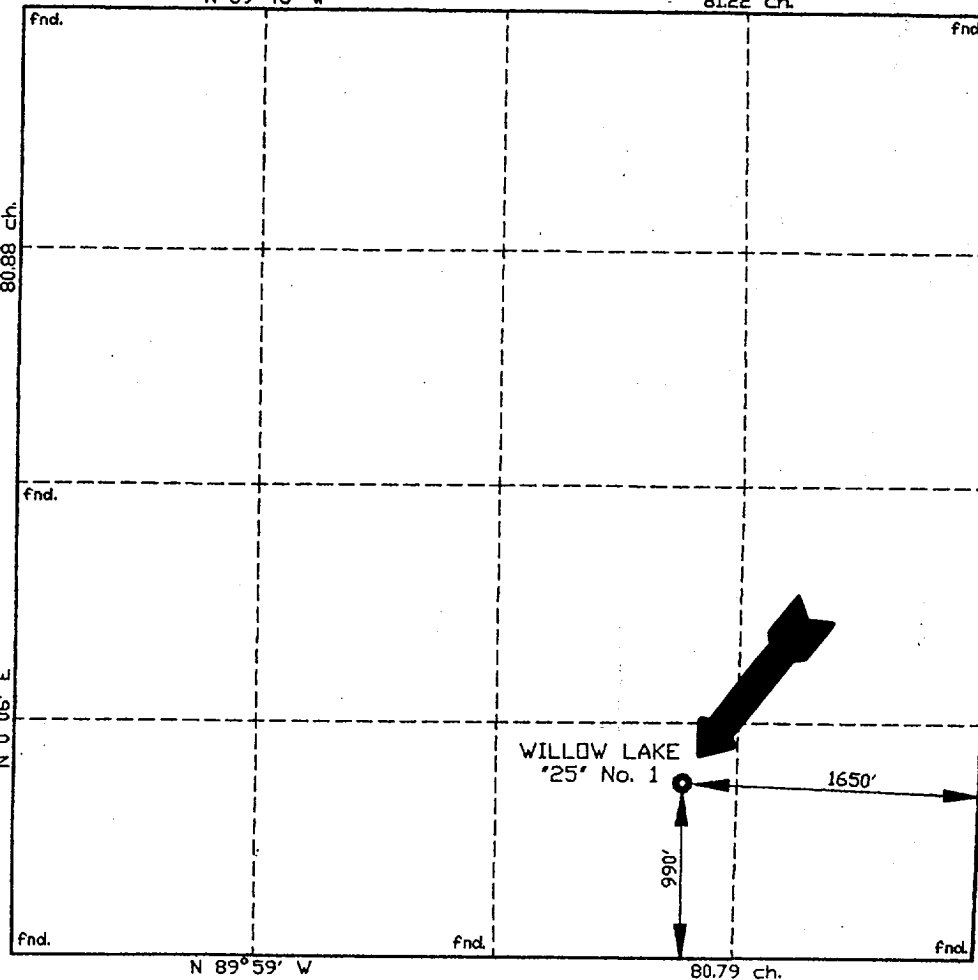
11 Bottom Hole Location If Different From Surface

UL or lot no. Same as Surface	Section Surface	Township	Range	Lot Idn	Feet from the	North/South line	Feet from the	East/West line	County
12 Dedicated Acres 40		13 Joint or Infill		14 Consolidation Code		15 Order No.			

NO ALLOWABLE WILL BE ASSIGNED TO THIS COMPLETION UNTIL ALL INTERESTS HAVE BEEN CONSOLIDATED  
OR A NON-STANDARD UNIT HAS BEEN APPROVED BY THE DIVISION

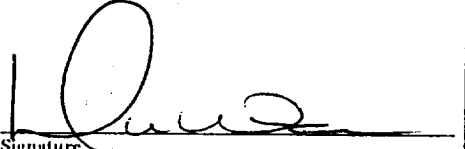
N 89°45' W

81.22 ch.



17 OPERATOR CERTIFICATION

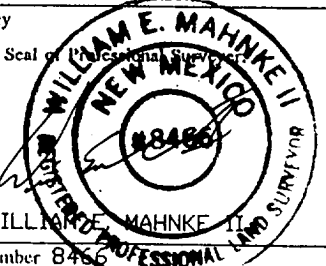
I hereby certify that the information contained herein is true and complete to the best of my knowledge and belief

  
Signature  
Donna Williams  
Printed Name  
Regulatory Assistant  
Title  
12/27/94  
Date

18 SURVEYOR CERTIFICATION

I hereby certify that the well location shown on this plat was plotted from field notes of actual surveys made by me or under my supervision, and that the same is true and correct to the best of my belief.

DECEMBER 19, 1994

Date of Survey  
Signature and Seal of Professional Surveyor  
  
WILLIAM E. MAHNKE II  
Certificate Number 8486