

30-015-28639  
 OIL CON. DIV.  
 DIST. 2  
 520

District I  
 PO Box 1980, Hobbs, NM 88241-1980  
 District II  
 PO Drawer DD, Artesia, NM 88211-0719  
 District III  
 1000 Rio Brazos Rd., Aztec, NM 87410  
 District IV  
 PO Box 2088, Santa Fe, NM 87504-2088

State of New Mexico  
 Energy, Minerals & Natural Resources Department  
**OIL CONSERVATION DIVISION**  
 PO Box 2088  
 Santa Fe, NM 87504-2088

Form C-101  
 Revised February 10, 1994  
 Instructions on back  
 Submit to Appropriate District Office  
 State Lease - 6 Copies  
 Fee Lease - 5 Copies

**RECEIVED**

JAN 02 1997

AMENDED REPORT

**APPLICATION FOR PERMIT TO DRILL, RE-ENTER, DEEPEN, PLUGBACK, OR ADD A ZONE**

Operator Name and Address: Pogo Producing Company P.O. Box 10340 Midland, Texas 79702		GRID Number 017891
Property Code <b>17562</b>	Property Name Harroun "22"	Well No. 1

*30-015-28639*  
~~30-015-28639~~  
~~30-015-28639~~

**Surface Location**

UL or lot no.	Section	Township	Range	Lot Ida	Feet from the	North/South line	Feet from the	East/West line	County
D	22	24S	29E		660'	North	660'	West	Eddy

**Proposed Bottom Hole Location If Different From Surface**

UL or lot no.	Section	Township	Range	Lot Ida	Feet from the	North/South line	Feet from the	East/West line	County

Proposed Pool 1 <i>Cedar Canyon, Delaware 11540</i>	Proposed Pool 2
--	-----------------

Work Type Code N	Well Type Code O	Cable/Rotary R	Lease Type Code S	Ground Level Elevation 2929'
Multiple S	Proposed Depth 5500'	Formation Delaware	Contractor N/A	Spud Date Upon Approval

**Proposed Casing and Cement Program**

Hole Size	Casing Size	Casing weight/foot	Setting Depth	Sacks of Cement	Estimated TOC
14-3/4"	10-3/4"	32.75# H-40	1250' <i>SS 6'</i>	400 sks.	Surface
1-7/8"	5-1/2"	15.5# J-55	5500'	1500 sks.	Surface

**RECEIVED**

Describe the proposed program. If this application is to DEEPEN or PLUG BACK give the data on the present productive zone and proposed new productive zone. Describe the blowout prevention program, if any. Use additional sheets if necessary.

This proposed well is a Delaware test.  
 B.O.P. Sketch is attached.

NOV 26 1996  
 OIL CON. DIV.  
 DIST. 2 Post FD-1  
 1-10-97  
*new loc + APF*

I hereby certify that the information given above is true and complete to the best of my knowledge and belief.

Signature: *James M.C. Ritchie, Jr.*  
 Printed name: James M.C. Ritchie, Jr.  
 Title: Agent  
 Date: 11/23/96  
 Phone: (915) 682-6601

**OIL CONSERVATION DIVISION**

Approved by: *James M. Quinn*  
 Title: *Richard Johnson*  
 Approval Date: 1-3-97  
 Expiration Date: 1-3-98

Conditions of Approval:  
 Attached

DISTRICT I  
P.O. Box 1960, Hobbs, NM 88241-1960

State of New Mexico  
Energy, Minerals and Natural Resources Depart

Form C-102  
Revised February 10, 1994  
Submit to Appropriate District Office  
State Lease - 4 Copies  
Fee Lease - 3 Copies

DISTRICT II  
P.O. Drawer DD, Artesia, NM 88211-0719

OIL CONSERVATION DIVISION  
P.O. Box 2088  
Santa Fe, New Mexico 87504-2088

DISTRICT III  
1000 Rio Brazos Rd., Aztec, NM 87410

DISTRICT IV  
P.O. BOX 2088, SANTA FE, N.M. 87504-2088

AMENDED REPORT

WELL LOCATION AND ACREAGE DEDICATION PLAT

API Number 30-015-28639	Pool Code 11540	Pool Name Cedar Canyon; Delaware
Property Code	Property Name HARROUN 22	Well Number 1
OGRID No.	Operator Name POGO PRODUCING COMPANY	Elevation 2929

Surface Location

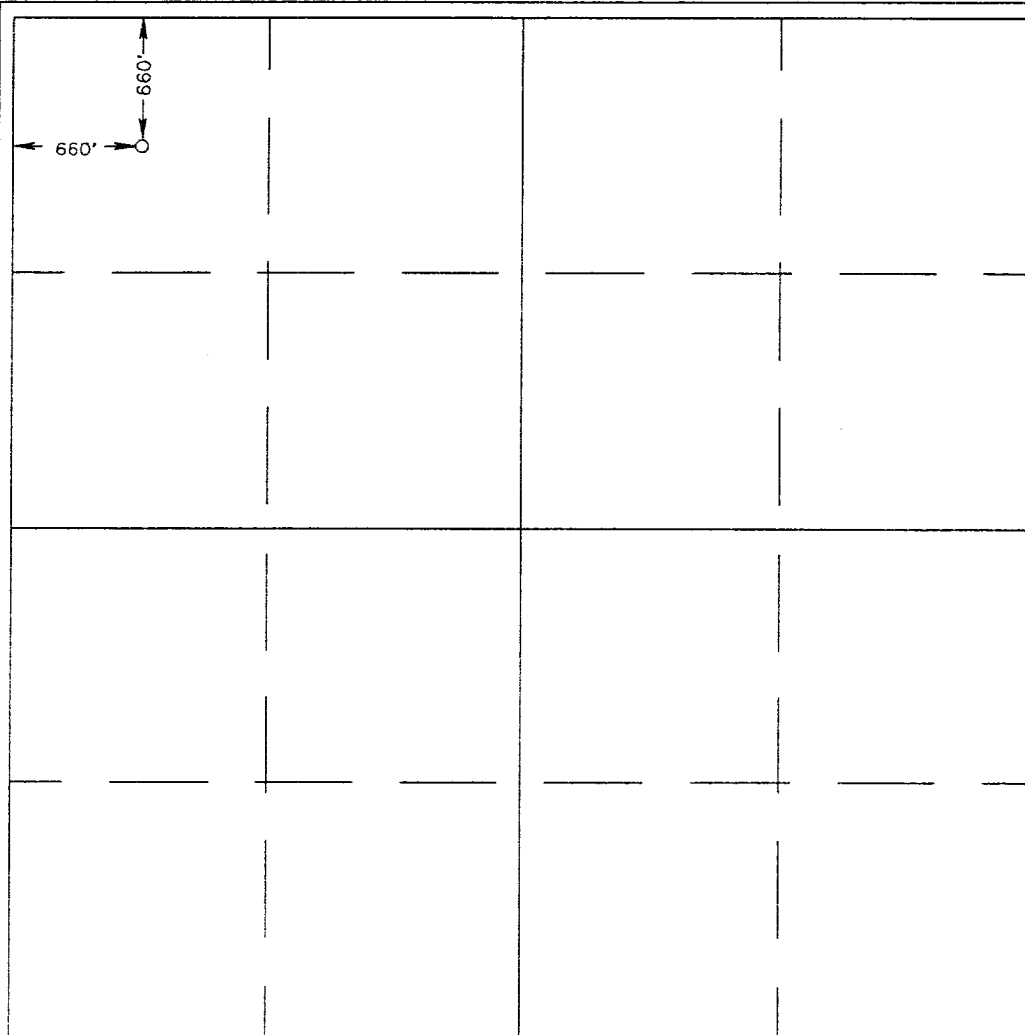
UL or lot No.	Section	Township	Range	Lot Idn	Feet from the	North/South line	Feet from the	East/West line	County
D	22	24 S	29 E		660	NORTH	660	WEST	EDDY

Bottom Hole Location If Different From Surface

UL or lot No.	Section	Township	Range	Lot Idn	Feet from the	North/South line	Feet from the	East/West line	County

Dedicated Acres 40	Joint or Infill	Consolidation Code	Order No.
-----------------------	-----------------	--------------------	-----------

NO ALLOWABLE WILL BE ASSIGNED TO THIS COMPLETION UNTIL ALL INTERESTS HAVE BEEN CONSOLIDATED OR A NON-STANDARD UNIT HAS BEEN APPROVED BY THE DIVISION



**OPERATOR CERTIFICATION**

I hereby certify the the information contained herein is true and complete to the best of my knowledge and belief.

*Richard L. Wright*  
Signature

Richard L. Wright  
Printed Name

Division Operations Manager  
Title

12/27/96  
Date

---

**SURVEYOR CERTIFICATION**

I hereby certify that the well location shown on this plat was plotted from field notes of actual surveys made by me or under my supervision, and that the same is true and correct to the best of my belief.

NOV. 11, 1996  
Date Surveyed

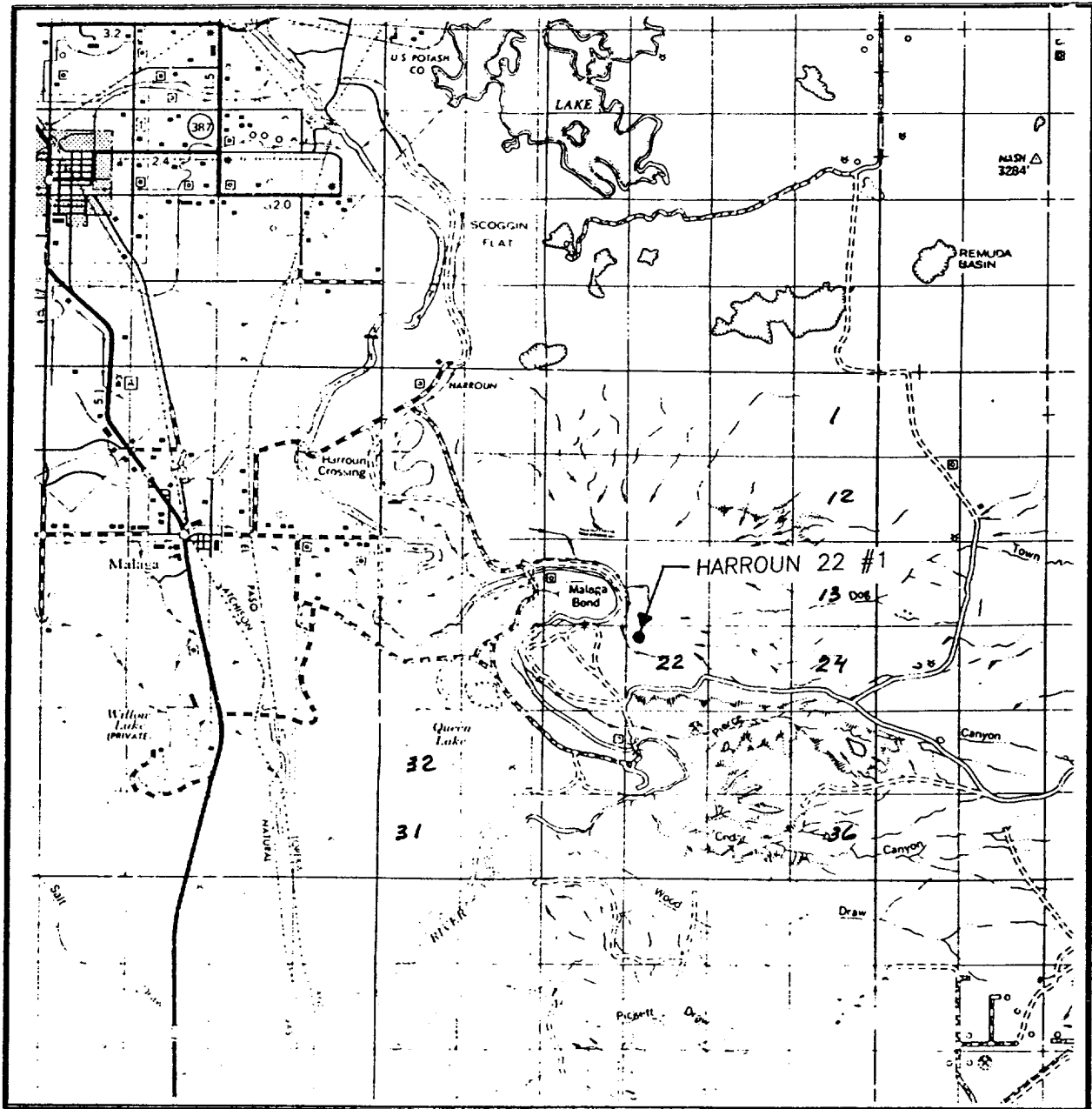
DMCC

Signature of Seal of Professional Surveyor  
*Ronald W. Eidson*

NEW MEXICO  
11-14-96  
96-11-143

Certificate No. JOHN W. WEST 676  
RONALD W. EIDSON 3239  
GARY EIDSON 12641

# VICINITY MAP



SCALE: 1" = 2 MILES

SEC. 22 TWP. 24-S RGE. 29-E

SURVEY N.M.P.M.

COUNTY EDDY

DESCRIPTION 660' FNL & 660' FWL

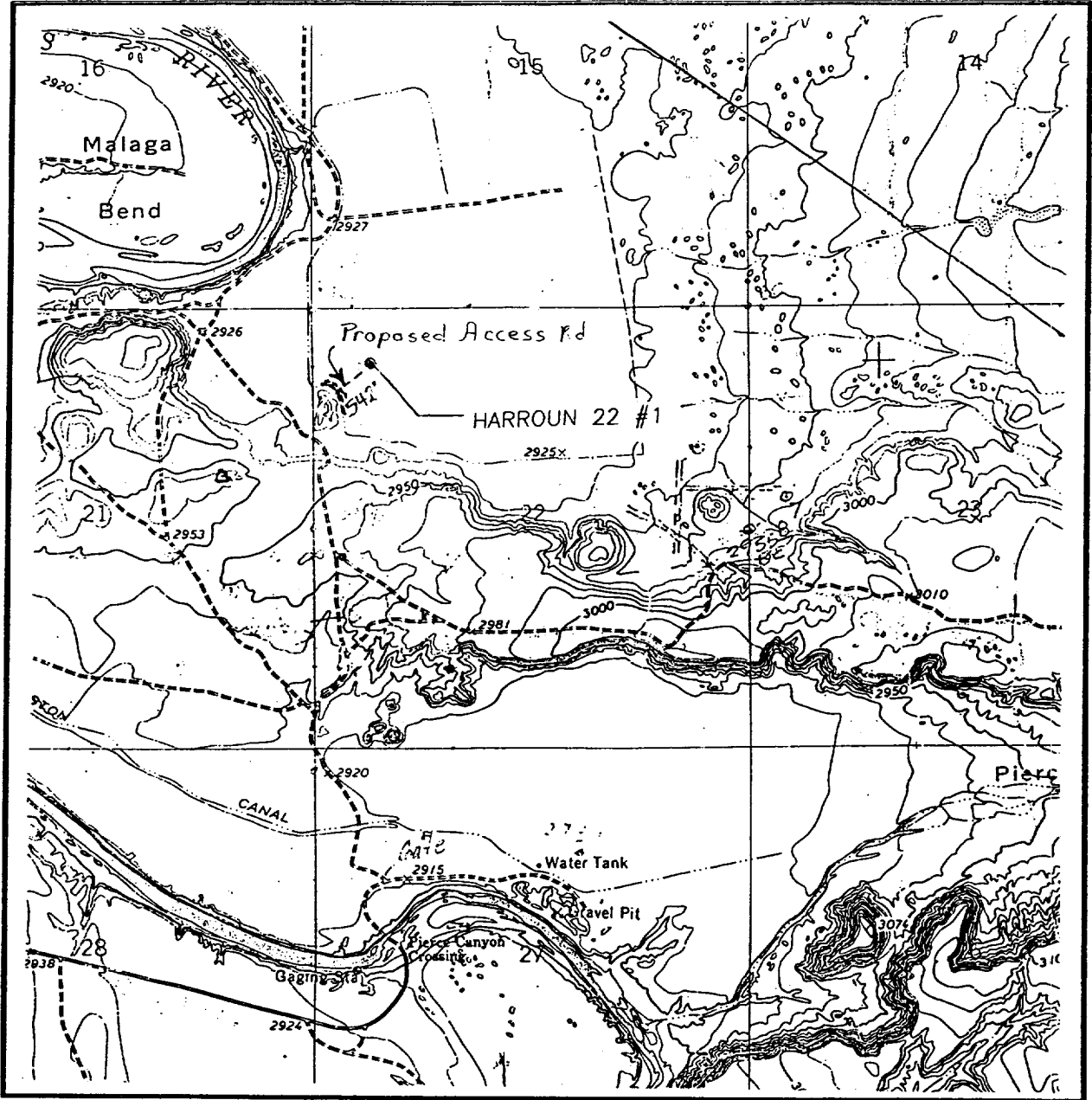
ELEVATION 2929

OPERATOR POGO PRODUCING COMPANY

LEASE HARROUN 22

**JOHN WEST ENGINEERING**  
**HOBBS, NEW MEXICO**  
**(505) 393-3117**

# LOCATION VERIFICATION MAP



SCALE: 1" = 2000'

CONTOUR INTERVAL:  
PIERCE CANYON - 10'

SEC. 22 TWP. 24-S RGE. 29-E

SURVEY N.M.P.M.

COUNTY EDDY

DESCRIPTION 660' FNL & 660' FWL

ELEVATION 2929

OPERATOR POGO PRODUCING COMPANY

LEASE HARROUN 22

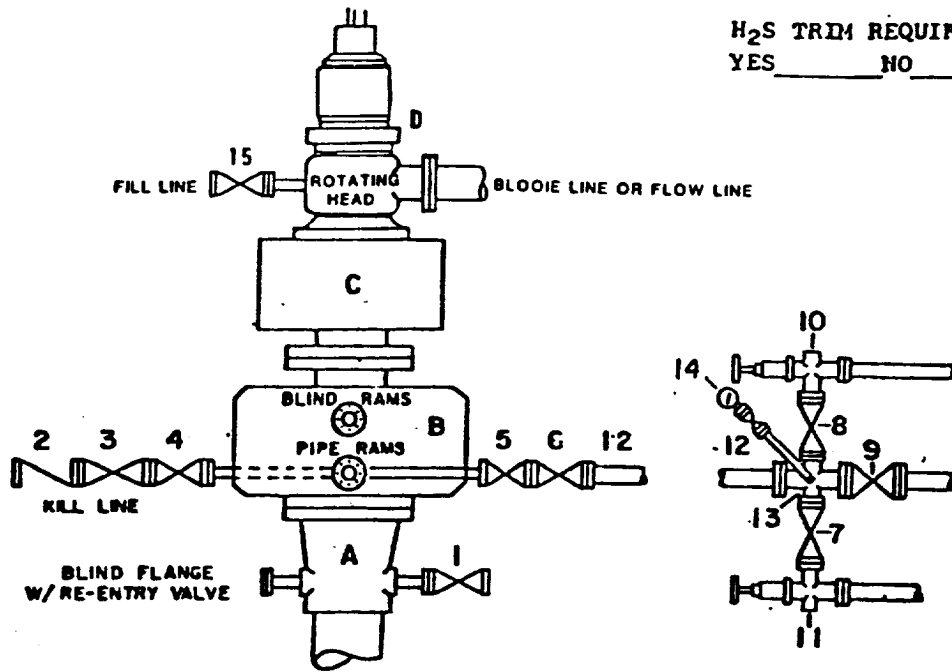
U.S.G.S. TOPOGRAPHIC MAP

PIERCE CANYON, N.M.

**JOHN WEST ENGINEERING  
HOBBS, NEW MEXICO**

**(505) 393-3117**

**DRILLING CONTROL  
CONDITION III-B 3000 PSI WP**



H<sub>2</sub>S TRIM REQUIRED  
YES \_\_\_\_\_ NO \_\_\_\_\_

**DRILLING CONTROL**

**MATERIAL LIST - CONDITION III - B**

- A Wellhead
- B 3000# W.P. Dual ram type preventer, hydraulic operated with 1" steel, 3000# W.P. control lines (where sub-structure height is adequate, 2 - 3000# W.P. single ram preventers may be utilized with 3000# W.P. drilling spool with 2" minimum flanged outlet for kill line and 3" minimum flanged outlet for choke line. The drilling spool is to be installed below the single ram type preventers).
- C 3000# W.P. Annular Preventer with 1" steel, 3000# W.P. control lines.
- D Rotating Head with fill up outlet and extended Blooie line.
- 1,3,4, 7,8, 2" minimum 3000# W.P. flanged full opening steel gate valve, or Halliburton Lo Torc Plug valve.
- 2 2" minimum 3000# W.P. back pressure valve.
- 5,6,9 3" minimum 3000# W.P. flanged full opening steel gate valve, or Halliburton Lo Torc Plug valve.
- 12 3" minimum Schedule 80, Grade B, seamless line pipe.
- 13 2" minimum x 3" minimum 3000# W.P. flanged cross.
- 10,11 2" minimum 3000# W.P. adjustable choke bodies.
- 14 Cameron Mud Gauge or equivalent (location optional in Choke line).
- 15 2" minimum 3000# W.P. flanged or threaded full opening steel gate valve, or Halliburton Lo Torc Plug valve.

SCALE:	DATE	EST NO	DRG NO.
DRAWN BY			
CHECKED BY			
APPROVED BY			

**EXHIBIT E**