

DISTRICT I
P.O. Box 1980, Hobbs, NM 88241-1980

State of New Mexico
Energy, Minerals and Natural Resources Department

Form C-102
Revised February 10, 1984
Submit to Appropriate District Office
State Lease - 4 Copies
Fee Lease - 3 Copies

DISTRICT II
P.O. Drawer 50, Artesia, NM 88211-0719

DISTRICT III
1000 Rio Brazos Rd., Aztec, NM 87413

OIL CONSERVATION DIVISION
P.O. Box 2088

Santa Fe, New Mexico 87504-2088

DISTRICT IV
P.O. BOX 2088, SANTA FE, N.M. 87504-2088

AMENDED REPORT

WELL LOCATION AND ACREAGE DEDICATION PLAT

API Number 33-016-28211	Pool Code 96238	Pool Name Corral Draw (Bore Springs)
Property Code	Property Name GAINES 21	Well Number 4
OGRID No. 017891	Operator Name FOGO PRODUCING COMPANY	Elevation 2936

Surface Location

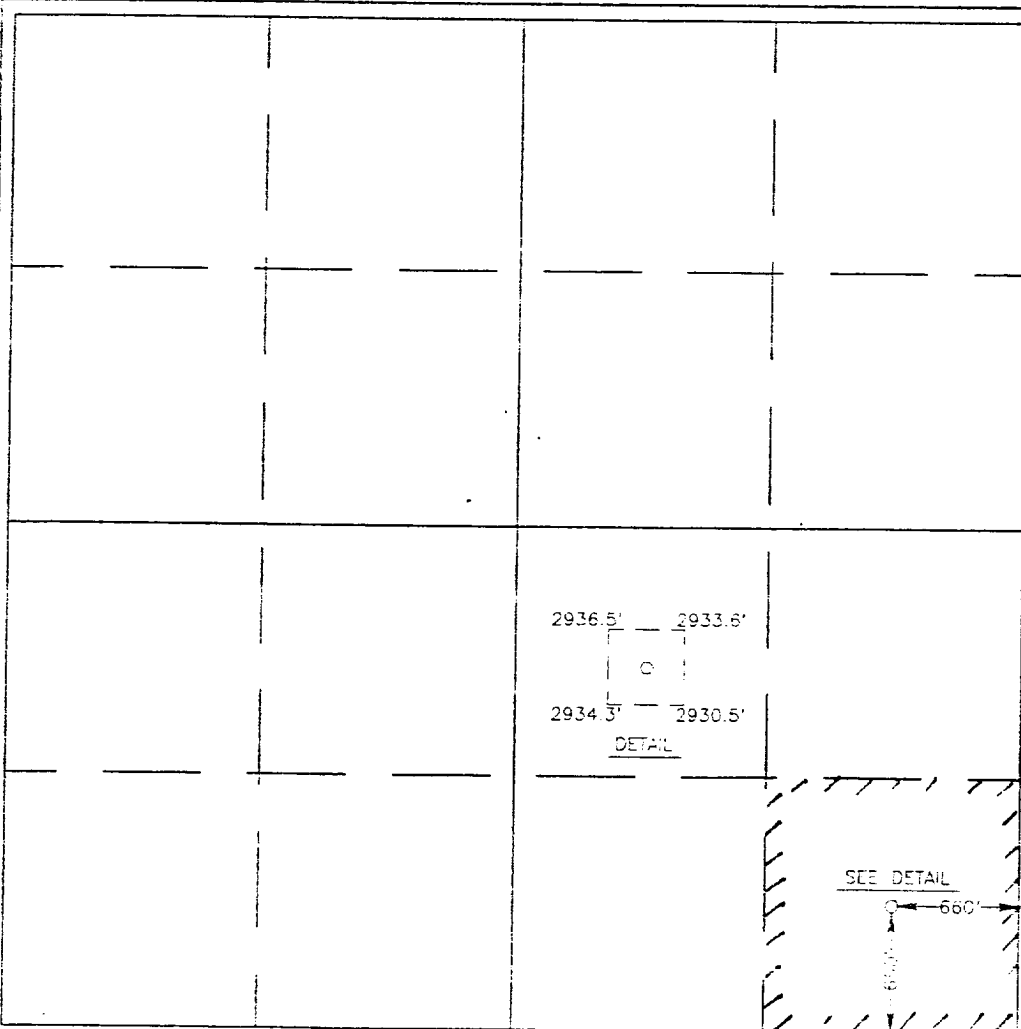
UL or lot No.	Section	Township	Range	Lot Idn	Feet from the	North/South line	Feet from the	East/West line	County
P	21	24 S	29 E		660	SOUTH	660	EAST	EDDY

Bottom Hole Location If Different From Surface

UL or lot No.	Section	Township	Range	Lot Idn	Feet from the	North/South line	Feet from the	East/West line	County

Dedicated Acres 4.0	Joint or Infill	Consolidation Code	Order No.
-------------------------------	-----------------	--------------------	-----------

NO ALLOWABLE WILL BE ASSIGNED TO THIS COMPLETION UNTIL ALL INTERESTS HAVE BEEN CONSOLIDATED OR A NON-STANDARD UNIT HAS BEEN APPROVED BY THE DIVISION



OPERATOR CERTIFICATION

I hereby certify that the information contained herein is true and complete to the best of my knowledge and belief.

James M.C. Ritchie, Jr.
Signature
James M.C. Ritchie, Jr.
Printed Name
Agent
Title
2/05/96
Date

SURVEYOR CERTIFICATION

I hereby certify that the well location shown on this plat was plotted from field notes of actual surveys made by me or under my supervision and that the same is true and correct to the best of my belief.

JANUARY 11, 1996
Date Surveyed SJA

Signature & Seal of Professional Surveyor
Ronald W. Edson
W.O. Num. 96-11-0048

Certificate No. JOHN W. WEST 876
RONALD W. EDSON 1011
GARY EDSON 12841