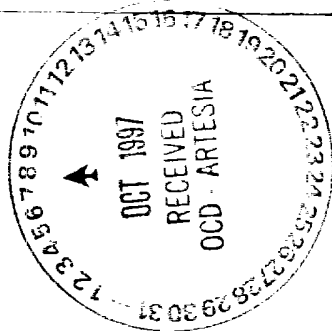


Company CHEVRON USA
 Well LENTINI 1 FED #16
 Field ID EDDY
 Location LOVING
 County EDDY
 State NM
 Country USA
 Service Company IMPERIAL
 Service Date 10/1/97 10:16:11 PM
 API Number
 Remarks

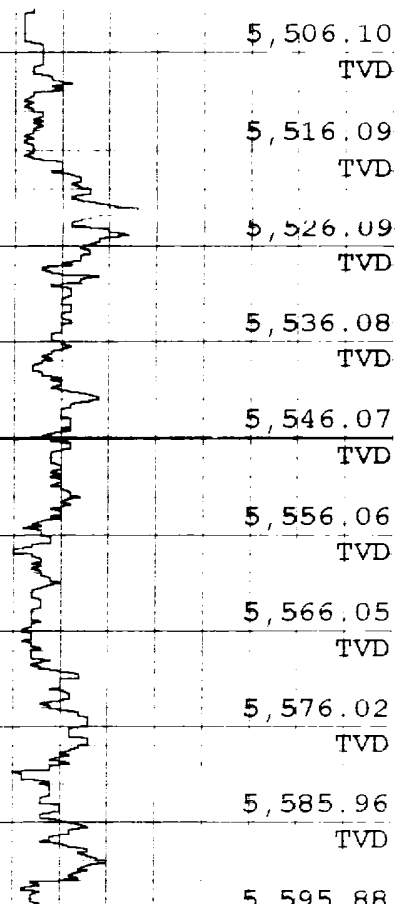
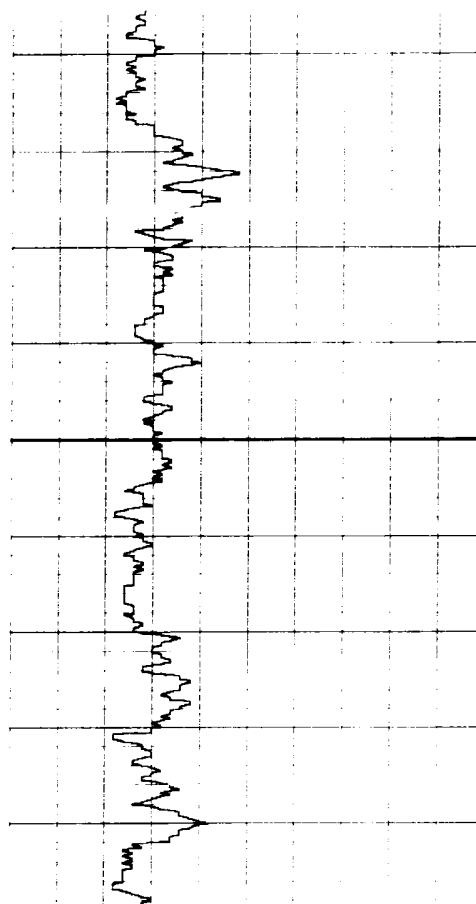
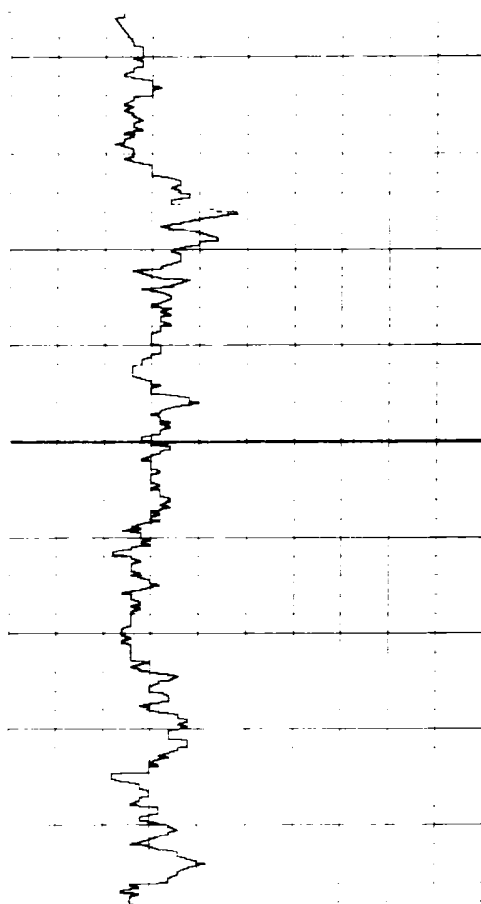


Survey Tie-In	MD	INC	AZM	TVD	N-S	E-W	PROP. DIR
	5,475.00	1.00	149.00	5,471.11	-124.60	93.43	77.46

0 MD Gamma 50

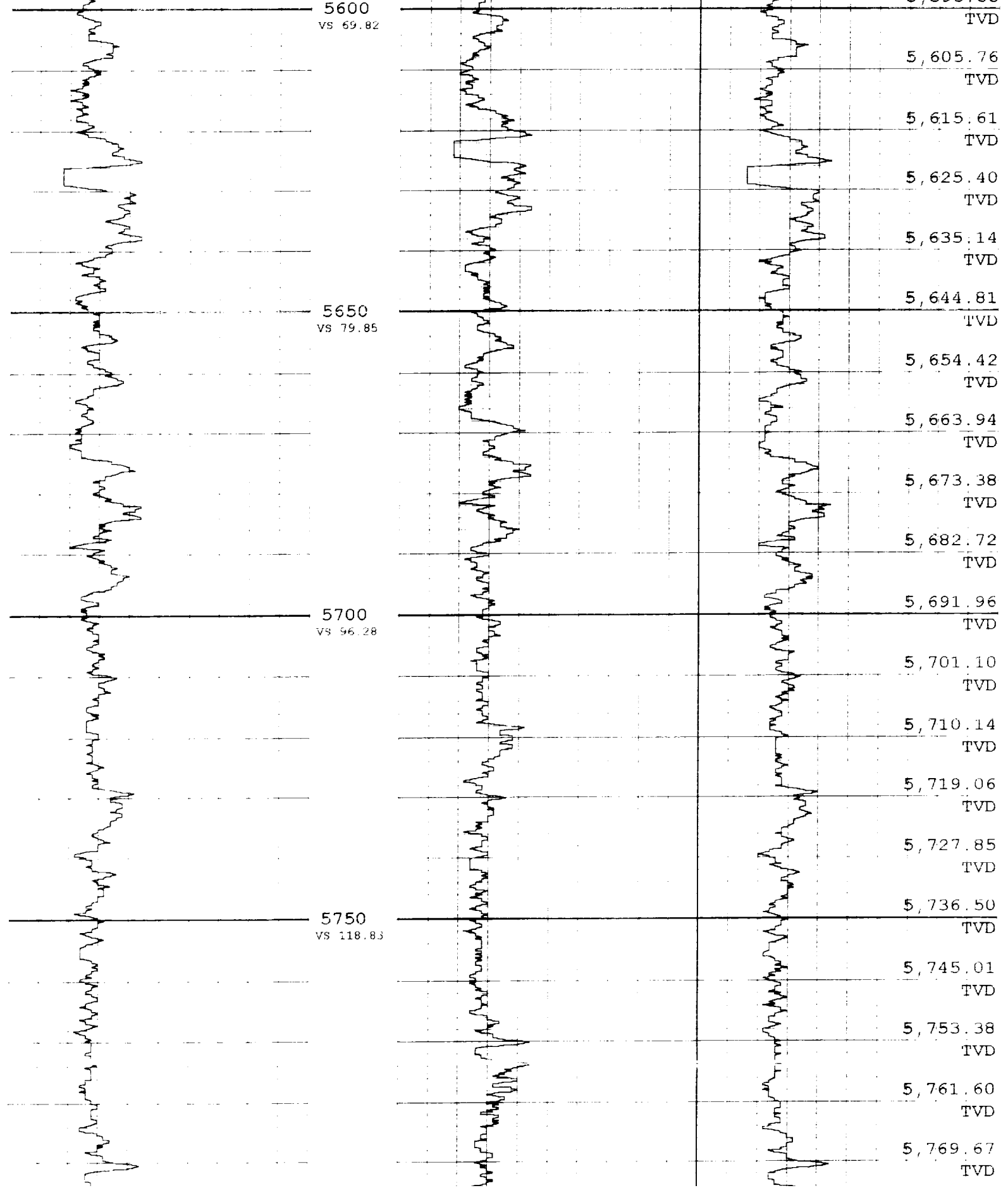
0 TVD Gamma 50

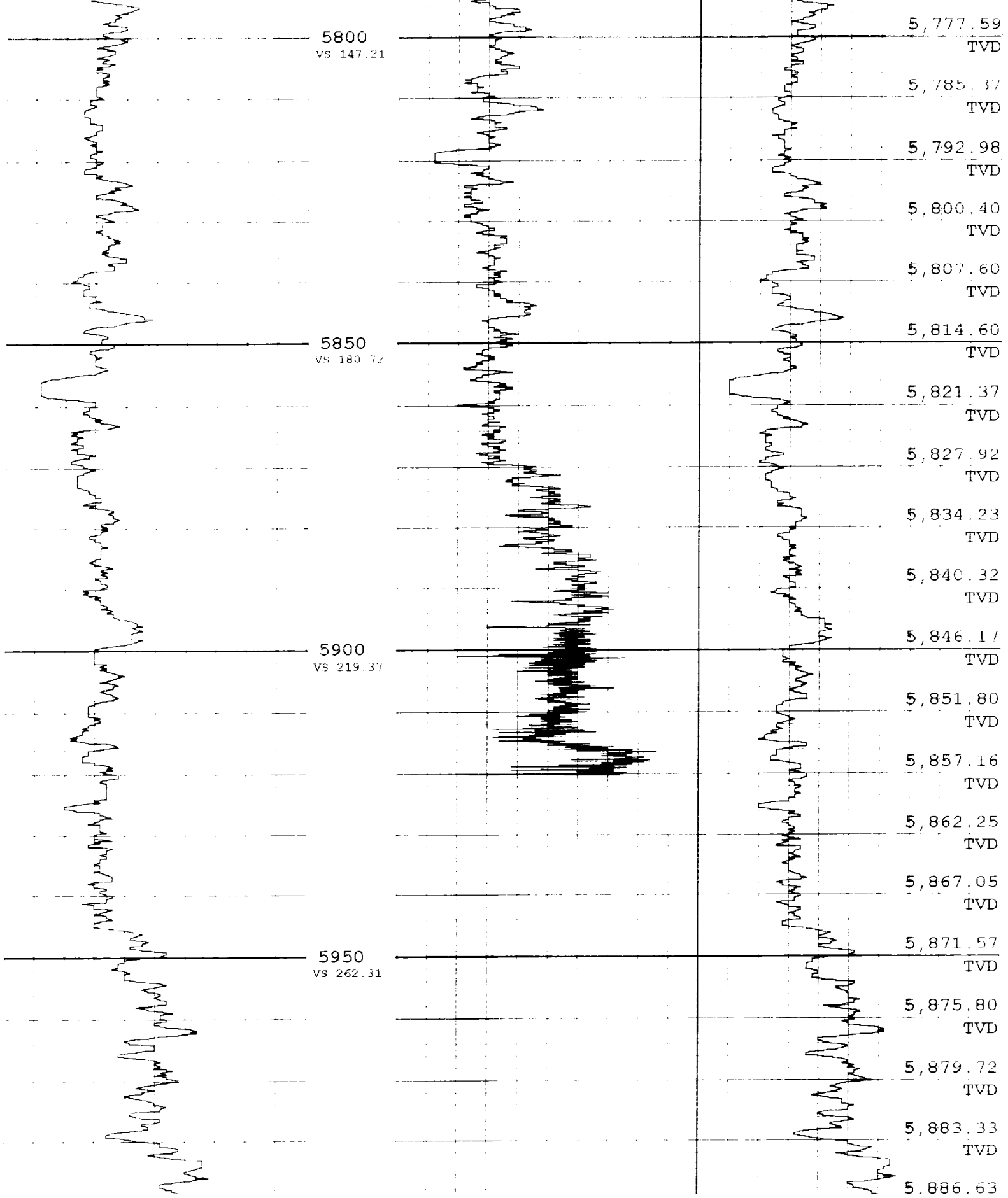
0 XTVD Gamma 50

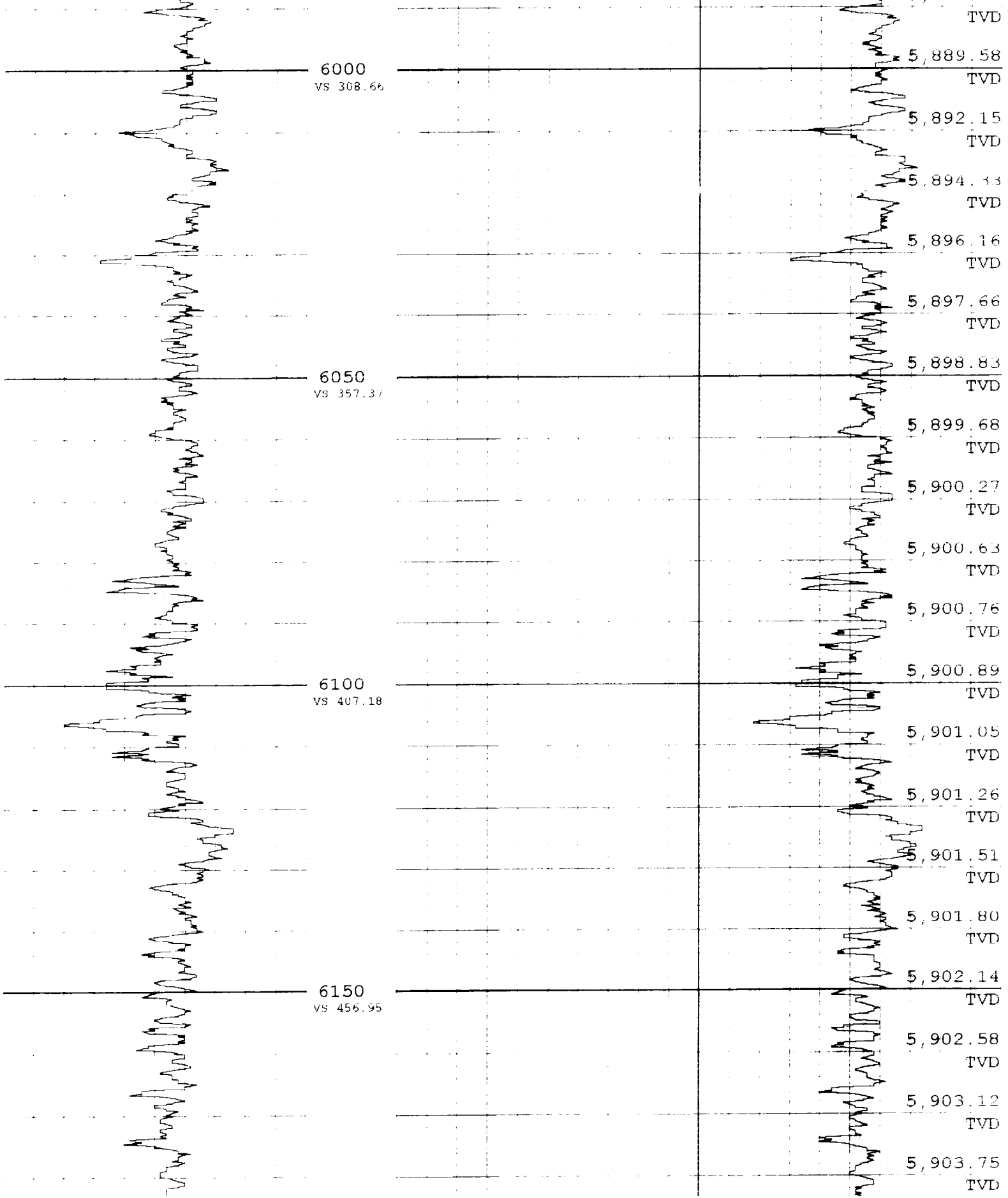


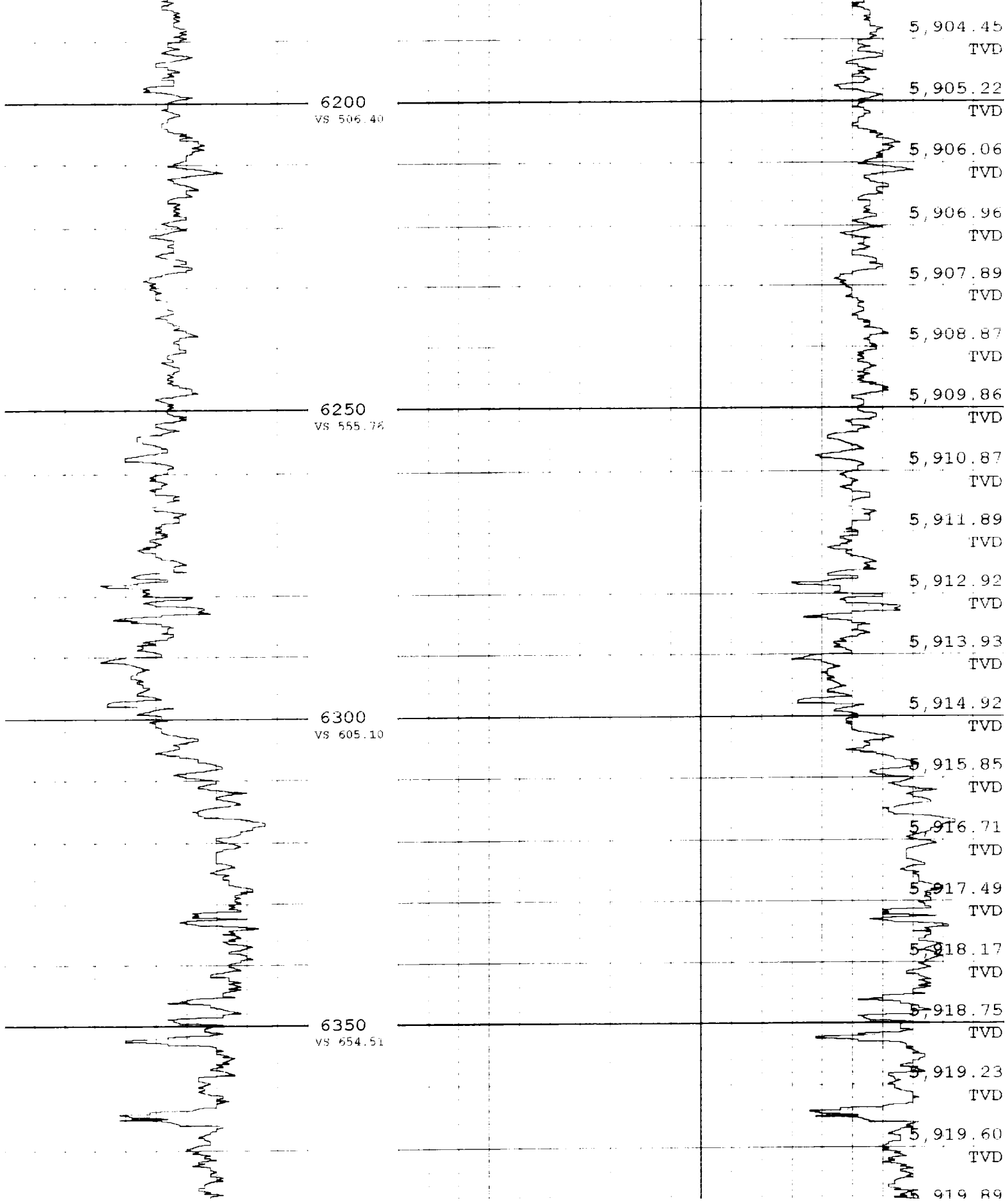
5550
VS 65.83

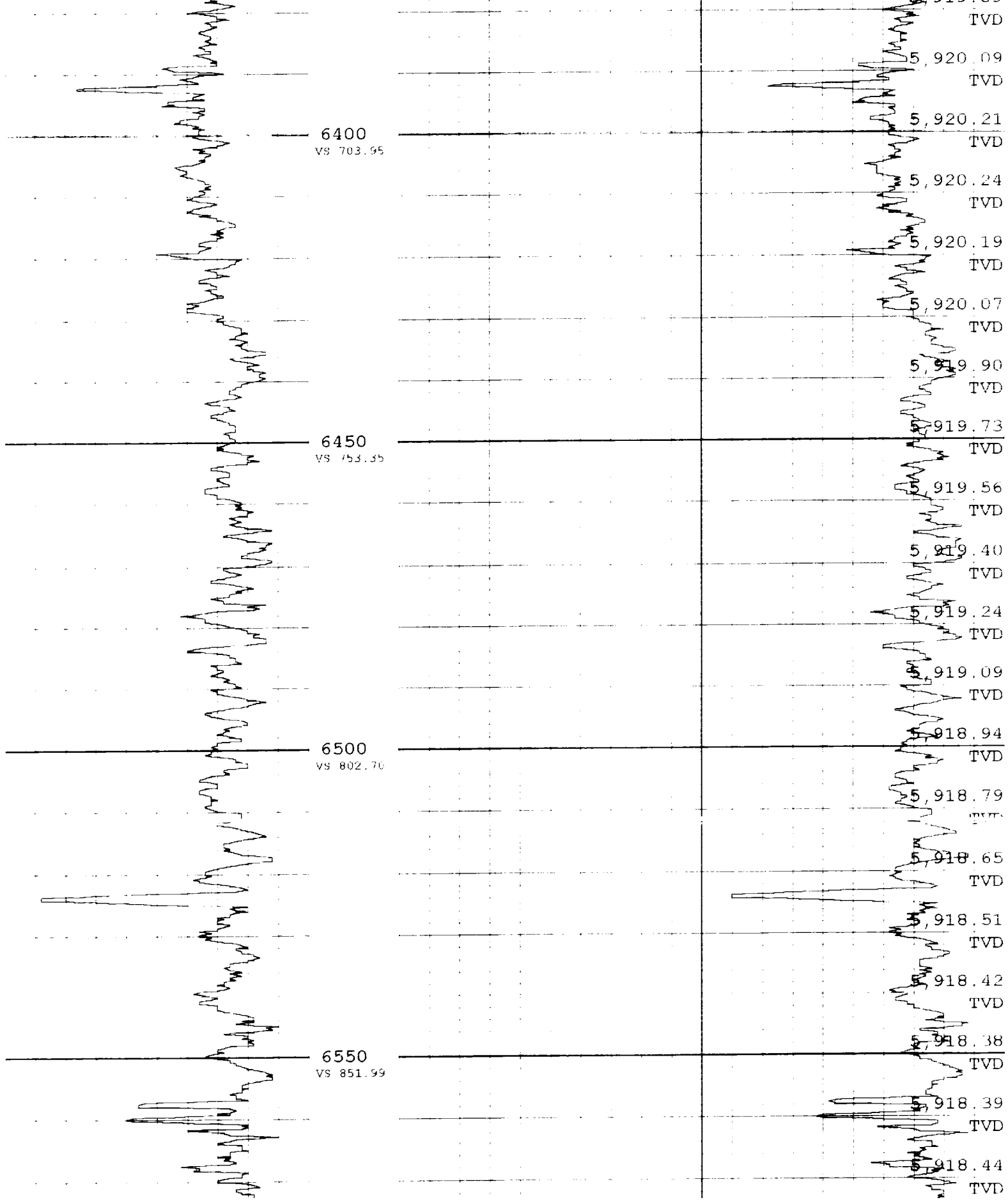
5,506.10
TVD
5,516.09
TVD
5,526.09
TVD
5,536.08
TVD
5,546.07
TVD
5,556.06
TVD
5,566.05
TVD
5,576.02
TVD
5,585.96
TVD
5,595.88

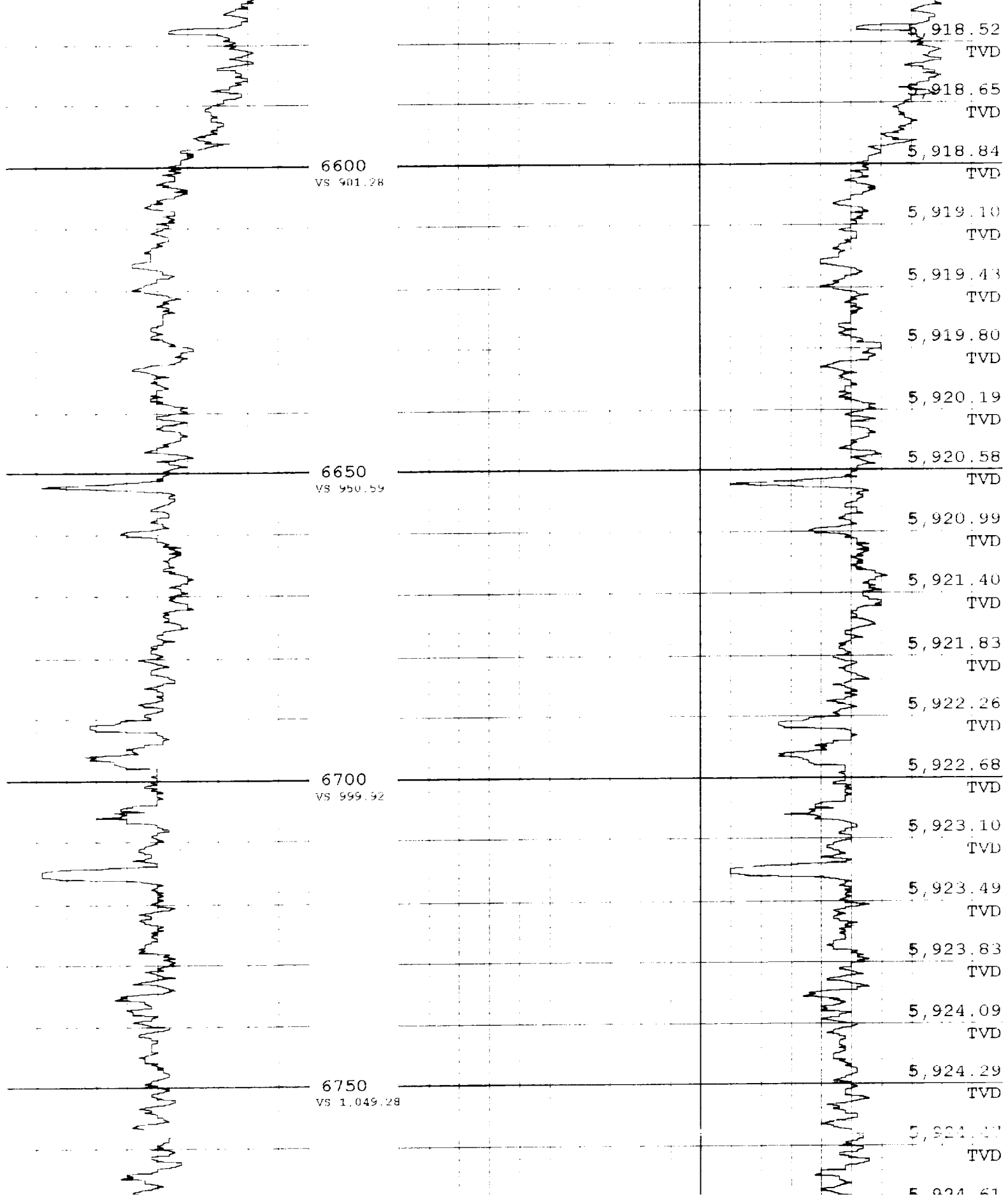


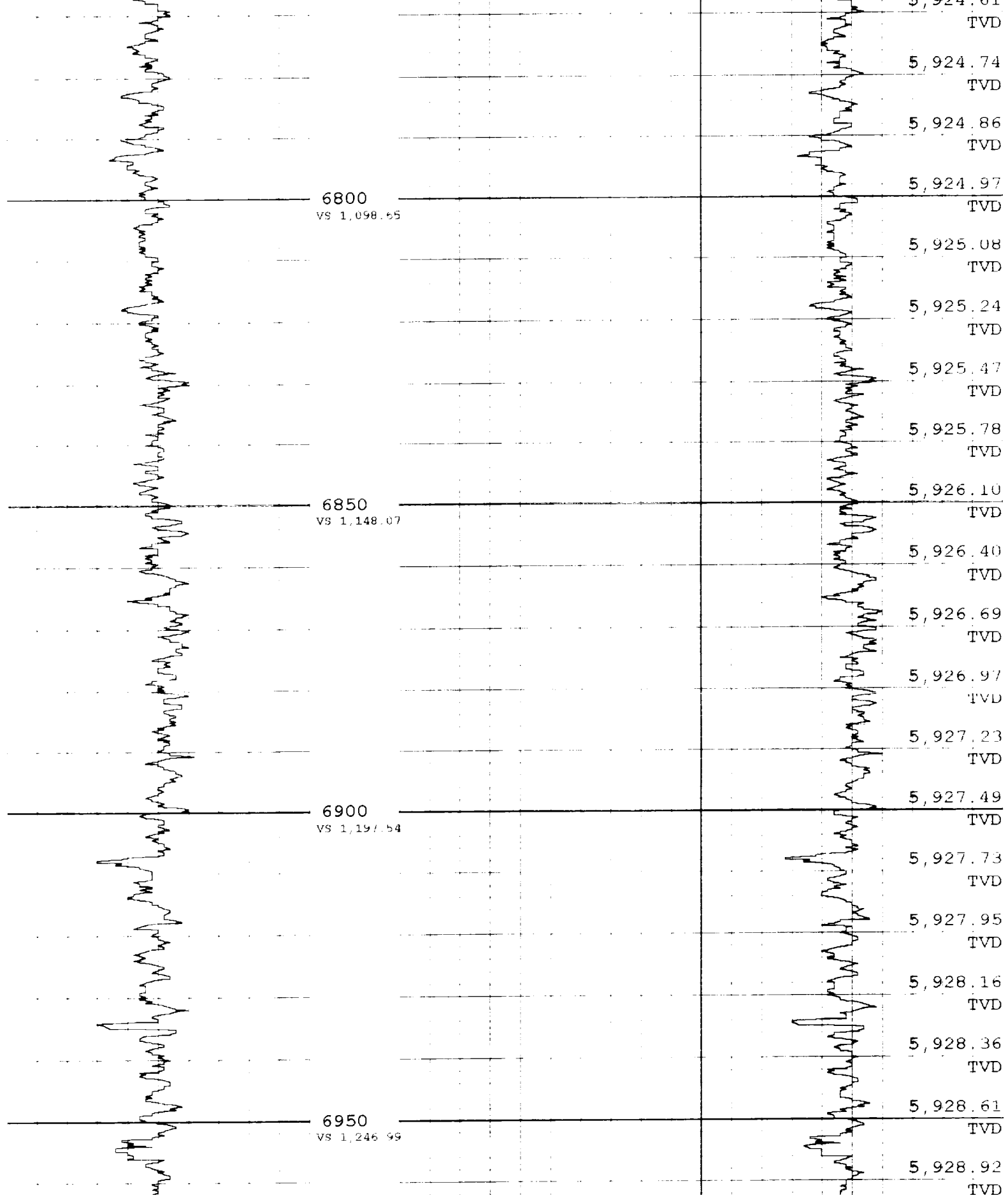


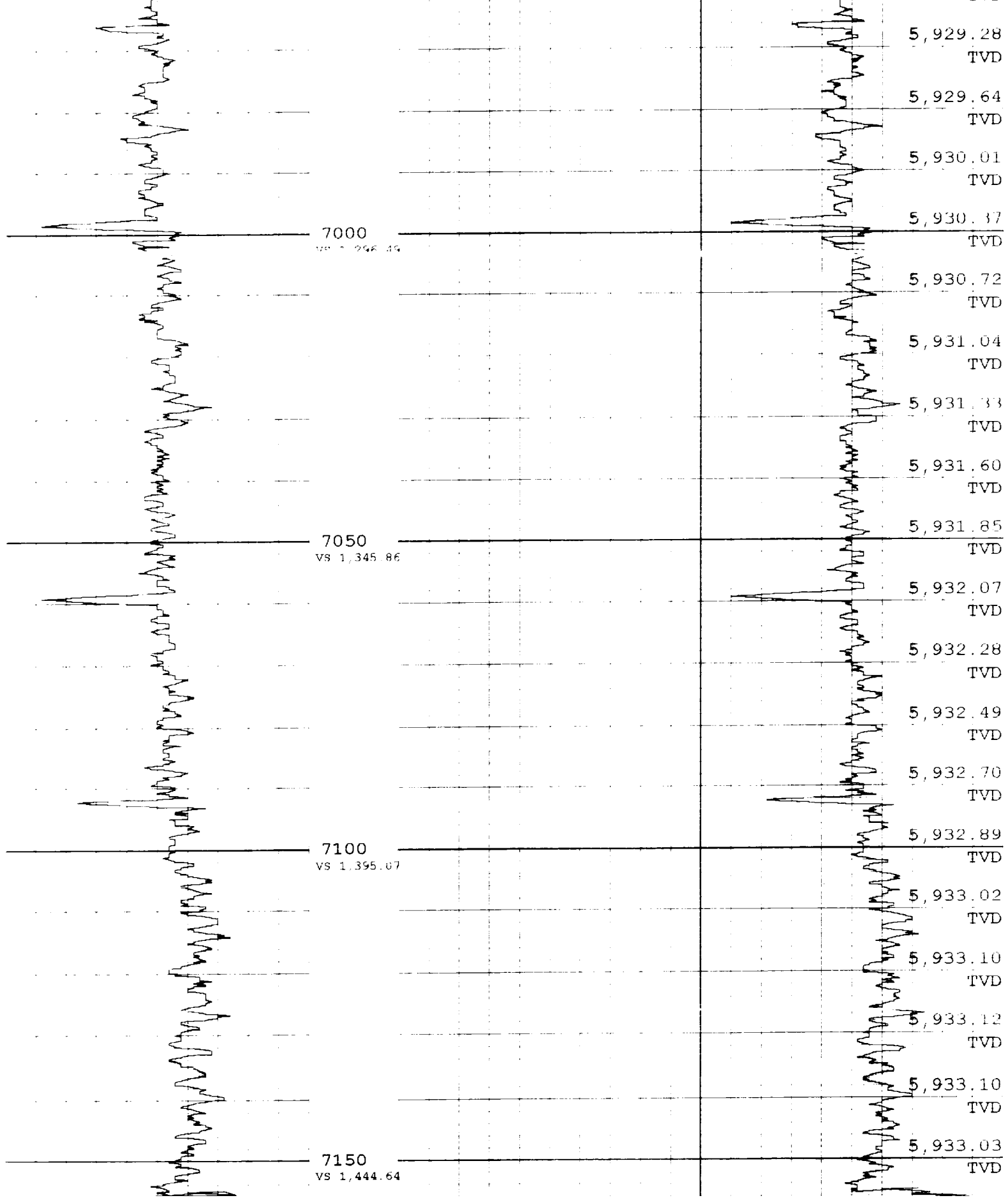












Last Survey Coordinates
MD 7,156.50
INC 90.66
AZM 71.83
TVD 5,932.96
N-S 298.69
E-W 1,420.13
VS 1,451.10

Gamma TVD and Vertical Section
Based On Gamma Spacing Of (8) ft
From Last Survey Point.
Gamma MD 7,156.50
Gamma TVD 5,932.96
Gamma VS 1,451.10