

Form 3160-3
(July 1992)

UNITED STATES DEPARTMENT OF THE INTERIOR
BUREAU OF LAND MANAGEMENT

SUBMIT IN TRIPLICATE*
(Other instructions on reverse side)

FORM APPROVED
OMB NO. 1004-0136
Expires: February 28, 1995

APPLICATION FOR PERMIT TO DRILL OR DEEPEN

1A. TYPE OF WORK

DRILL ☒

DEEPEN ☐

B. TYPE OF WELL

OIL WELL ☒

GAS WELL ☐

OTHER ☐

SINGLE ZONE ☐

MULTIPLE ZONE ☐

2. NAME OF OPERATOR

POGO PRODUCING COMPANY

(RICHARD WRIGHT)

3. ADDRESS AND TELEPHONE NO.

P.O. Box 10340, MIDLAND, TX 79702 PH (915) 682-6822

4. LOCATION OF WELL (Report location clearly and in accordance with any State requirements.)

At surface

SEC 4 T22S R31E 1650' FNL & 2310' FWL
At proposed prod. zone

SAME

UNIT F

14. DISTANCE IN MILES AND DIRECTION FROM NEAREST TOWN OR POST OFFICE*

Approximately 30 miles East of Carlsbad, New Mexico

15. DISTANCE FROM PROPOSED* LOCATION TO NEAREST PROPERTY OR LEASE LINE, FT.
(Also to nearest drlg. unit line, if any)

1650'

18. DISTANCE FROM PROPOSED LOCATION* TO NEAREST WELL, DRILLING, COMPLETED, OR APPLIED FOR, ON THIS LEASE, FT.

1980'

16. NO. OF ACRES IN LEASE

640

19. PROPOSED DEPTH

8150'

17. NO. OF ACRES ASSIGNED TO THIS WELL

40

20. ROTARY OR CABLE TOOLS

ROTARY

21. ELEVATIONS (Show whether DF, RT, GR, etc.)

3440' GR.

22. APPROX. DATE WORK WILL START*

AS SOON AS APPROVED

23. SECRETARY'S POTASH R-111-P POTASH CARLSBAD CONTROLLED WATER BASIN

SIZE OF HOLE	GRADE, SIZE OF CASING	WEIGHT PER FOOT	SETTING DEPTH	QUANTITY OF CEMENT
26"	20" Conductor	NA	40'	Cement to surface W/Redi-Mix
14-3/4"	H-40 10-3/4"	32.7	650'	400 sx Circulate
9-7/8"	J-55 7-5/8"	26.4	4000'	1000 sx " " " " " " " "
6-3/4"	J-55 4-1/2"	11.6	8150'	1500 sx " " " " " " " "

1. Drill 26" hole to 40'. Set 40' of 20" conductor pipe. Cement to surface with Redi-Mix.
2. Drill 14-3/4" hole to 650'. Run & set 650' of 10-3/4" H-40 32.7# ST&C casing. Cement with 250 sx of 35/65 Class "C" POZ Light + 2% CaCl, tail in with 150 sx Class "C" + 2% CaCl. Circulate cement to surface.
3. Drill 9-7/8" hole to 4000'. Run & set 4000' of 7-5/8" J-55 26.4# ST&C casing. Cement with 800 sx 35/65 Class "c" POZ + 5# Salt/sx. Tail in with 200 sx Class "C" + 2% CaCl. Circulate cement to surface.
4. Drill 6-3/4" hole to 8150'. Run & set 8150' of 4 1/2" J-55 11.6# ST&C Casing. Cement in 3 stages. 1st stage: 500 sx Class "H" + 5% Micro Bond. 2nd stage: 400 sx Class "C" 12# Gilsonite/Sx 3rd stage: 500 sx Class "C" Halco Light, tail in with 100 sx Class "C" neat. Circulate cement to surface.

APPROVAL SUBJECT TO
GENERAL REQUIREMENTS AND
SPECIAL STIPULATIONS
ATTACHED

IN ABOVE SPACE DESCRIBE PROPOSED PROGRAM: If proposal is to deepen, give data on present productive zone and depth of zone. If proposal is to drill or deepen directionally, give pertinent data on subsurface locations and measured and true vertical depths. Give blowout prevention program, if any.

24. SIGNED Just T. Janice TITLE Agent DATE 02/26/97

(This space for Federal or State office use)

PERMIT NO. _____

APPROVAL DATE _____

Application approval does not warrant or certify that the applicant holds legal or equitable title to those rights in the subject lease which would entitle the applicant to conduct operations thereon.
CONDITIONS OF APPROVAL, IF ANY:

APPROVED BY Richard A. Whitley TITLE Acting State Director DATE 7/10/97

*See Instructions On Reverse Side

and willfully to make to any department or agency of the

DISTRICT I
P.O. Box 1880, Hobbs, NM 88241-1880

DISTRICT II
P.O. Drawer DD, Artesia, NM 88211-0719

DISTRICT III
1000 Rio Brazos Rd., Aztec, NM 87410

DISTRICT IV
P.O. Box 2088, Santa Fe, NM 87504-2088

State of New Mexico
Energy, Minerals and Natural Resources Department

Form C-102
Revised February 10, 1994
Submit to Appropriate District Office
State Lease - 4 Copies
Fee Lease - 3 Copies

OIL CONSERVATION DIVISION

P.O. Box 2088
Santa Fe, New Mexico 87504-2088

☐ AMENDED REPORT

WELL LOCATION AND ACREAGE DEDICATION PLAT

API Number	Pool Code 96582	Pool Name LOST TANK DELAWARE WEST
Property Code 17955	Property Name LOST TANK 4 FEDERAL	Well Number 5
OGRID No. 17891	Operator Name POGO PRODUCING COMPANY	Elevation 3440

Surface Location

UL or lot No. F	Section 4	Township 22 S	Range 31 E	Lot Idn	Feet from the 1650	North/South line NORTH	Feet from the 2310	East/West line WEST	County EDDY
--------------------	--------------	------------------	---------------	---------	-----------------------	---------------------------	-----------------------	------------------------	----------------

Bottom Hole Location If Different From Surface

UL or lot No.	Section	Township	Range	Lot Idn	Feet from the	North/South line	Feet from the	East/West line	County
Dedicated Acres 40	Joint or Infill	Consolidation Code	Order No.						

NO ALLOWABLE WILL BE ASSIGNED TO THIS COMPLETION UNTIL ALL INTERESTS HAVE BEEN CONSOLIDATED
OR A NON-STANDARD UNIT HAS BEEN APPROVED BY THE DIVISION

				OPERATOR CERTIFICATION I hereby certify the the information contained herein is true and complete to the best of my knowledge and belief. Signature Joe T. Janica Printed Name Agent Title 02/26/97 Date	
SURVEYOR CERTIFICATION I hereby certify that the well location shown on this plat was plotted from field notes of actual surveys made by me or under my supervision, and that the same is true and correct to the best of my belief. FEBRUARY 15, 1997 Date Surveyed Signature & Seal of Professional Surveyor G. Eidson Certificate No. 285 JOHN WEST, 676 EIDSON, 3239 G. EIDSON, 12641					

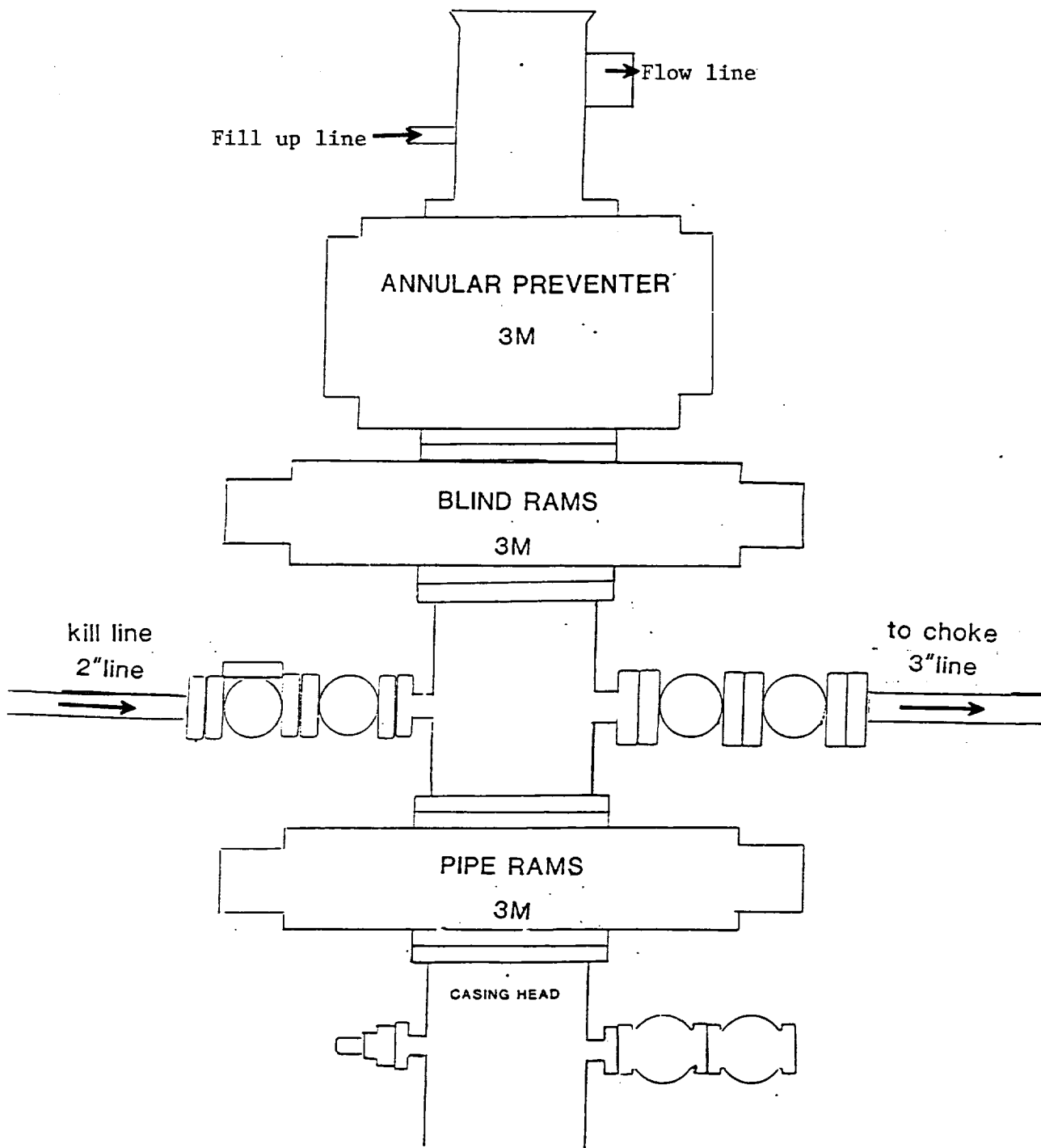
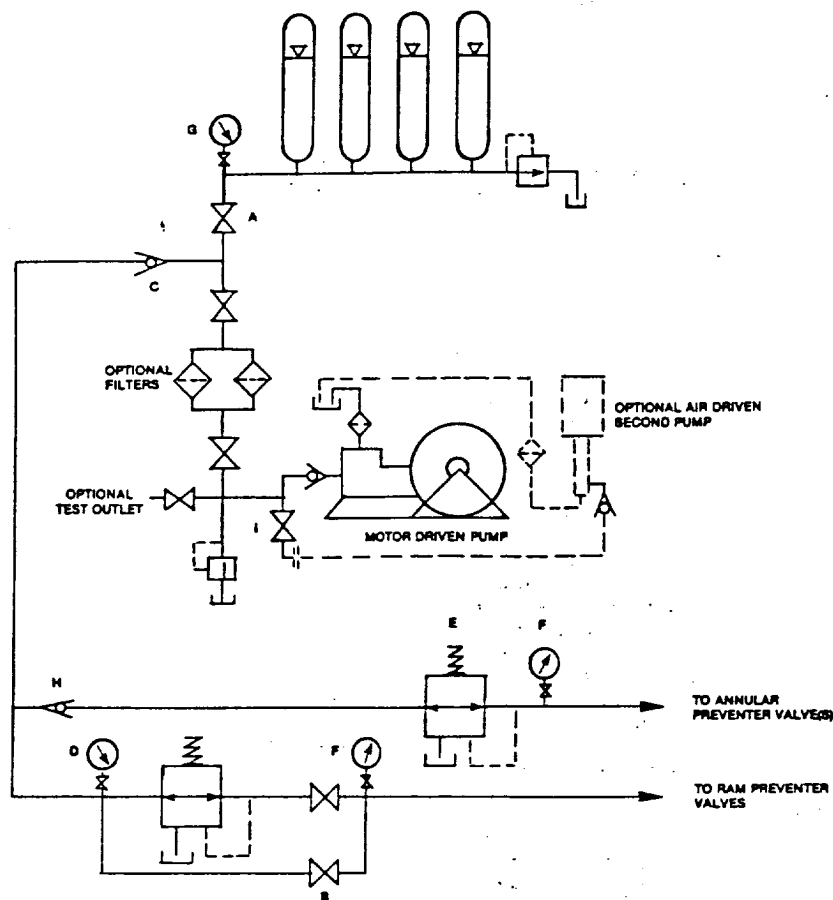


EXHIBIT "E"
B.O.P. SKETCH TO BE USED ON

POGO PRODUCING COMPANY
LOST TANK "4" FEDERAL #5
SECTION 4 UNIT F
T22S-R31E EDDY CO NM



HAND AJUSTABLE CHOKE

POGO PRODUCING CO
3M CHOKE MANIFOLD

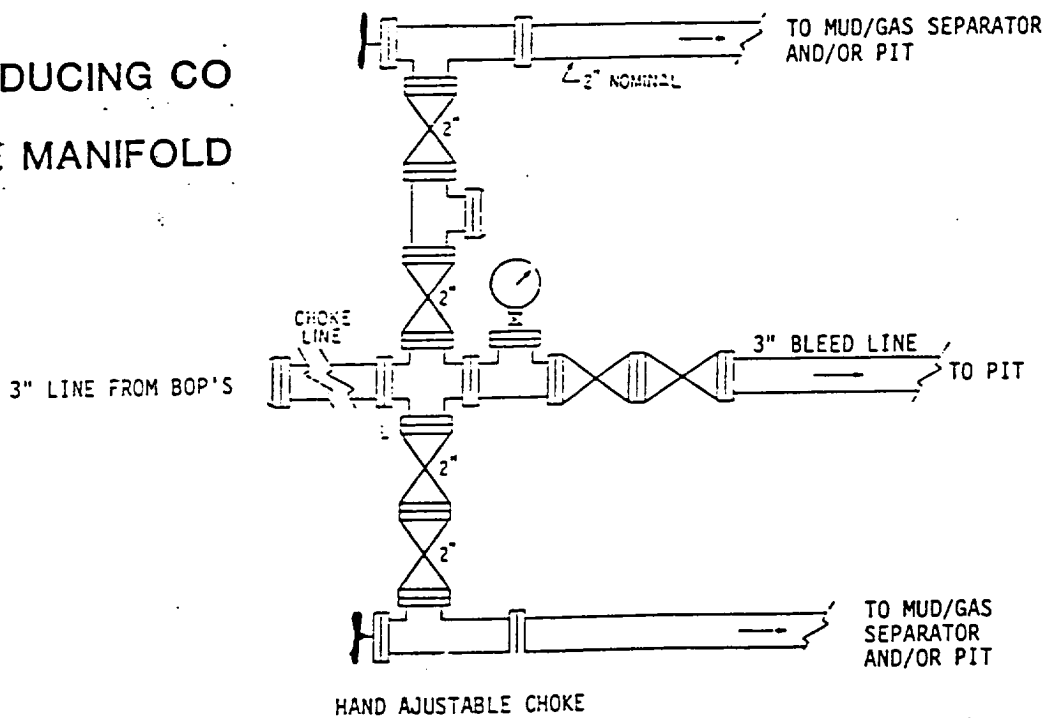


EXHIBIT "1-E"
CHOKE MANIFOLD & CLOSING UNIT

POGO PRODUCING COMPANY
LOST TANK "4" FEDERAL #5
SECTION 4 UNIT F
T22S-R31E EDDY CO NM