

Submit 3 Copies

to Appropriate

DISTRICT I

P. O. Box 1980, Hobbs, NM 88240

DISTRICT II

811 S. 1st Street, Artesia, NM 88210-283

DISTRICT III

1000 Rio Brazos Rd., Aztec, NM 87410

DISTRICT IV

P. O. Box 2088, Santa Fe, NM 87504-2088

State of New Mexico
Energy, Minerals and Natural Resources Department

OIL CONSERVATION DIVISION

P. O. Box 2088

Santa Fe, New Mexico 87504-2088

Form U-101

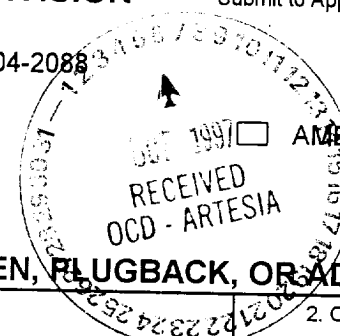
Revised February 10, 1994

Instructions on back

Submit to Appropriate District Office

State Lease - 6 Copies

Fee Lease - 5 Copies



APPLICATION FOR PERMIT TO DRILL, RE-ENTER, DEEPEN, PLUGBACK, OR ADD A ZONE

1. Operator Name and Address Bass Enterprises Production Co. P O Box 2760 Midland, Texas 79702-2760 915-683-2277		2. OGRID Number 001801
3. API Number 30-015-29876		4. Well No. 140
4. Property Code 1796	5. Property Name Poker Lake Unit	

7. Surface Location

UL or lot no.	Section	Township	Range	Lot Idn	Feet from the	North/South line	Feet from the	East/West line	County
E	32	23S	30E		1980	North	330	West	Eddy

8. Proposed Bottom Hole Location If Different From Surface

UL or lot no.	Section	Township	Range	Lot Idn	Feet from the	North/South line	Feet from the	East/West line	County

9. Proposed Pool 1 Forty-Niner Ridge (Delaware), SW (96472)	10. Proposed Pool 2
--	---------------------

11. Work Type Code N	12. Well Type Code O	13. Cable/Rotary R	14. Lease Type Code State	15. Ground Level Elevation 3187'
16. Multiple N	17. Proposed Depth 7600'	18. Formation Bone Spring	19. Contractor Lakota Drilling	20. Spud Date ASAP

21. Proposed Casing and Cement Program

Hole Size	Casing Size	Casing weight/foot	Setting Depth	Sacks of Cement	Estimated TOC
14-3/4"	11-3/4"	42#	500'	380	Surface
11"	8-5/8"	28#	3510'	960	Surface
7-7/8"	5-1/2"	15.5# & 17#	7600'	665	TOC @ 3310', (200' inside the 8-5/8" X 5-1/2" annulus

22. Described the proposed program. If this application is to DEEPEN or PLUG BACK give the data on the present productive zone and proposed new productive zone. Describe the blowout prevention program, if any. Use additional sheets if necessary.

The surface casing will be set into the Rustler below all fresh water sands.

The intermediate casing will be set into the top of the Lamar Lime.

*Post ID-1
10-17-97
API & Loc*

1-460-132-562

23. I hereby certify that the information given above is true and complete to the of my knowledge and belief.

Signature: *William R. Dannels*

Printed Name: William R. Dannels

Title: Division Drilling Supt.

Date: October 3, 1997

Phone: (915) 683-2277

OIL CONSERVATION DIVISION

Approved by: **ORIGINAL SIGNED BY TIM W. GUM**
DISTRICT II SUPERVISOR

Title: **OCT 10 1997**

Approval Date: *10-10-98*

Conditions of Approval:
Attached

DISTRICT I
P.O. Box 1980, Hobbs, NM 88240

State of New Mexico
Energy, Minerals and Natural Resources Department

Form C-102
Revised February 10, 1994
Instruction on back
Submit to Appropriate District Office
State Lease - 4 Copies
Fee Lease - 3 Copies

DISTRICT II
P.O. Drawer DD, Artesia, NM 88210

DISTRICT III
1000 Rio Brazos Rd., Aztec, NM 87410

OIL CONSERVATION DIVISION

P.O. Box 2088
Santa Fe, New Mexico 87504-2088

☐ AMENDED REPORT

WELL LOCATION AND ACREAGE DEDICATION PLAT

API Number 30-015-29876	Pool Code 96472	Pool Name Forty-Niner Ridge (Delaware), SW
Property Code E-5229	Property Name Poker Lake Unit	Well Number 140
OGRID No. 001801	Operator Name Bass Enterprises Production Company	Elevation 3187'

Surface Location

UL or lot No.	Section	Township	Range	Lot Idn	Feet from the	North/South line	Feet from the	East/West line	County
E	32	23 S	30 E		1980	North	330	West	Eddy

Bottom Hole Location If Different From Surface

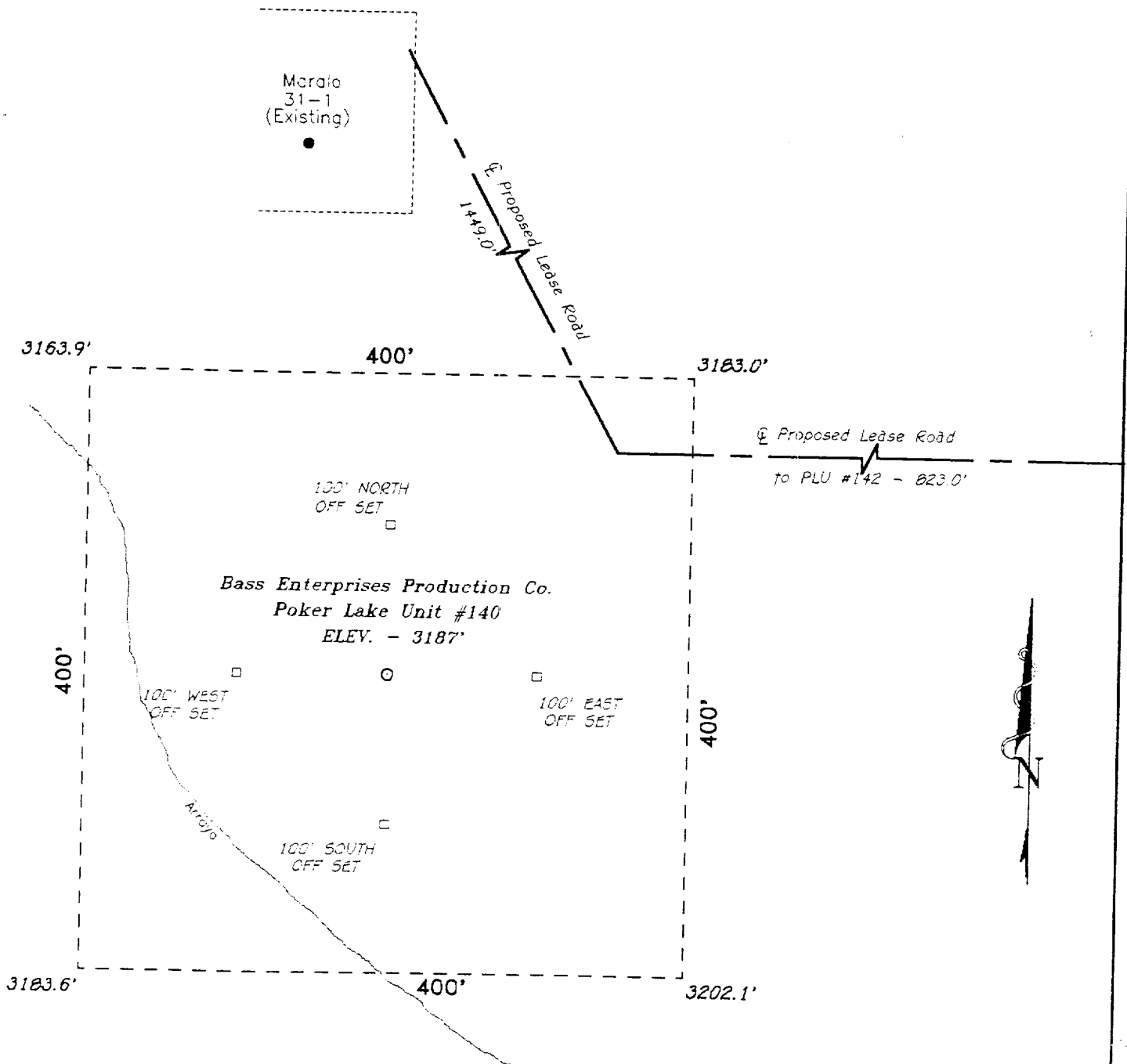
UL or lot No.	Section	Township	Range	Lot Idn	Feet from the	North/South line	Feet from the	East/West line	County

Dedicated Acres 40	Joint or Infill N	Consolidation Code	Order No.
------------------------------	-----------------------------	--------------------	-----------

NO ALLOWABLE WILL BE ASSIGNED TO THIS COMPLETION UNTIL ALL INTERESTS HAVE BEEN CONSOLIDATED
OR A NON-STANDARD UNIT HAS BEEN APPROVED BY THE DIVISION

	OPERATOR CERTIFICATION I hereby certify the the information contained herein is true and complete to the best of my knowledge and belief. <u>William R. Dannels</u> Signature William R. Dannels Printed Name Division Drilling Supt. Title September 15, 1997 Date		
	SURVEYOR CERTIFICATION I hereby certify that the well location shown on this plat was plotted from field notes of actual surveys made by me or under my supervision, and that the same is true and correct to the best of my belief. August 22, 1997 Date Surveyed Signature & Seal of Professional Surveyor W.D. No. 74986 Certificate No. 5884 Jones 7977		
	BASIN SURVEYS		

SECTION 32, TOWNSHIP 23 SOUTH, RANGE 30 EAST, N.M.P.M.,
EDDY COUNTY, NEW MEXICO.



100 0 100 200 FEET

SCALE: 1" = 100'

BASS ENTERPRISES PRODUCTION CO.

REF: Poker Lake Unit No. 140 / Well Pad Topic

THE POKER LAKE UNIT No. 140 LOCATED 1980' FROM THE
NORTH LINE AND 330' FROM THE WEST LINE OF
SECTION 32, TOWNSHIP 23 SOUTH, RANGE 30 EAST,
N.M.P.M., EDDY COUNTY, NEW MEXICO.

BASIN SURVEYS P.O. BOX 1786-HOBBS, NEW MEXICO

W.C. Number: 7498 Drawn By: S.C. NICHOLS

Date: 08-26-97 Disk: SON #39 - 7498AA.DWG

Survey Date: 08-22-97

Sheet 1 of 1 Sheets

**EIGHT POINT DRILLING PROGRAM
BASS ENTERPRISES PRODUCTION CO.**

NAME OF WELL: POKER LAKE UNIT #140

LEGAL DESCRIPTION - SURFACE: 1980' FNL & 330' FWL, Section 32, T-23-S, R-30-E, Eddy County, New Mexico.

POINT 1: ESTIMATED FORMATION TOPS

(See No. 2 Below)

POINT 2: WATER, OIL, GAS AND/OR MINERAL BEARING FORMATIONS

Anticipated Formation Tops: KB 3203' (est)
GL 3187'

<u>FORMATION</u>	<u>ESTIMATED TOP FROM KB</u>	<u>ESTIMATED SUBSEA TOP</u>	<u>BEARING</u>
T/Rustler	293'	+2910'	Barren
T/Salt	553'	+2650'	Barren
B/Salt	3273'	- 70'	Barren
T/Lamar Lime	3493'	- 290'	Barren
T/Ramsey Sand	3523'	- 320'	Oil/Gas
T/Lwr Brushy Canyon	7017'	- 3814'	Oil/Gas
T"W" Sand	7126'	- 3923'	Oil/Gas
T"Y" Sand	7173'	- 3970'	Oil/Gas
T/Bone Spring	7283'	- 4080'	Oil/Gas
TD	7600'	- 4397'	

POINT 3: CASING PROGRAM

<u>TYPE</u>	<u>INTERVALS</u>	<u>PURPOSE</u>	<u>CONDITION</u>
11-3/4", 42#, WC-40, STC	0' - 500'	Surface	New
8-5/8", 28, WC-50, LT&C	0' - 3510'	Intermediate	New
5-1/2", 17# & 15.50#, K-55, LT&C	0' - 7600'	Production	New

POINT 4: PRESSURE CONTROL EQUIPMENT (SEE ATTACHED DIAGRAM)

A BOP equivalent to Diagram 1 will be nipped up on the surface casing head. When testing, the BOP stack, choke, kill lines, kelly cocks, inside BOP, etc. will be hydro-tested to the lowest rated working pressure of the equipment being tested. In addition to the rated working pressure test, a low pressure (200 psi) test will be required. These tests will be performed:

- a) Upon installation
- b) After any component changes
- c) Fifteen days after a previous test
- d) As required by well conditions

Con't...

POINT 4: PRESSURE CONTROL EQUIPMENT (SEE ATTACHED DIAGRAM)

A function test of annular, pipe and blind rams to insure that the preventers are operating correctly will be performed on each trip. A function test is required only a minimum of once every 24 hours. See the attached diagram #1 for the minimum criteria for the choke manifold.

POINT 5: MUD PROGRAM

<u>DEPTH</u>	<u>MUD TYPE</u>	<u>WEIGHT</u>	<u>FV</u>	<u>PV</u>	<u>YP</u>	<u>FL</u>	<u>Ph</u>
0' - 500'	FW Spud	8.4 - 9.0	45-38	NC	NC	NC	9.5
500' - 3510'	Brine	9.8 -10.2	28-30	NC	NC	NC	9.5
3510' - 6500'	Fresh Water	8.5 - 9.0	28-30	NC	NC	NC	9.5
6500' - 7600'	FW/Starch	8.5 - 9.0	28-30	NC	NC	<100	9.5

POINT 6: TECHNICAL STAGES OF OPERATION

A) TESTING

None anticipated.

B) LOGGING

GR-CNL from Intermediate casing point ($\pm 3510'$) to surface.

GR-CNL-LDT-AIT from TD to Intermediate casing point.

C) CONVENTIONAL CORING

None anticipated.

D) CEMENT

SURFACE

<u>INTERVAL</u>	<u>AMOUNT SXS</u>	<u>FT OF FILL</u>	<u>TYPE</u>	<u>GALS/SX</u>	<u>PPG</u>	<u>FT³/SX</u>
0-550'	100	250	Class "C" + 4% gel +	9.09	13.5	1.74
(100% excess circ to surface)	280	300	2% CaCl ₂ + 1/4 pps Cellophane Class C + 2% CaCl ₂	6.32	14.8	1.32

INTERMEDIATE

<u>INTERVAL</u>	<u>AMOUNT SXS</u>	<u>FT OF FILL</u>	<u>TYPE</u>	<u>GALS/SX</u>	<u>PPG</u>	<u>FT³/SX</u>
LEAD						
0 - 3010'	770	3010	35/65 PozC + 6% Gel +	11.95	12.4	2.14
(100% excess)			5% Salt + 1/4 pps Cellophane			
TAIL						
3010 - 3510'	190	500	Class "C" Neat	6.32	14.8	1.32
(100% excess)						

Con't... POINT 6: TECHNICAL STAGES OF OPERATION

D) CEMENT

PRODUCTION (Two stage w/DV tool @ $\pm 5000'$)

<u>INTERVAL</u>	<u>AMOUNT SXS</u>	<u>FT OF FILL</u>	<u>TYPE</u>	<u>GALS/SX</u>	<u>PPG</u>	<u>FT³/SX</u>
1st Stage 5000'-7600' (50% excess)	410	2600	Class H + 1.4 gps Fumed Silica + 0.05 gps Flac + 0.2 gps Anti foam agent + 3% Salt + 0.3% Retarder	8.8	14.0	1.66
2nd Stage LEAD 3310-4700' (50% excess)	195	1390'	35/65 PozC + 6% Gel + 1/4 pps Cellophane	10.2	12.8	1.87
TAIL 4700-5000' (50% excess)	60	300'	Class C Neat	6.32	14.8	1.32

E) DIRECTIONAL DRILLING

No directional services anticipated.

POINT 7: ANTICIPATED RESERVOIR CONDITIONS

Normal pressured formations are anticipated throughout this well. No H₂S is expected.

POINT 8: OTHER PERTINENT INFORMATION

A) Auxiliary Equipment

Upper and lower kelly cocks. Full opening stab in valve on the rig floor.

B) Anticipated Starting Date

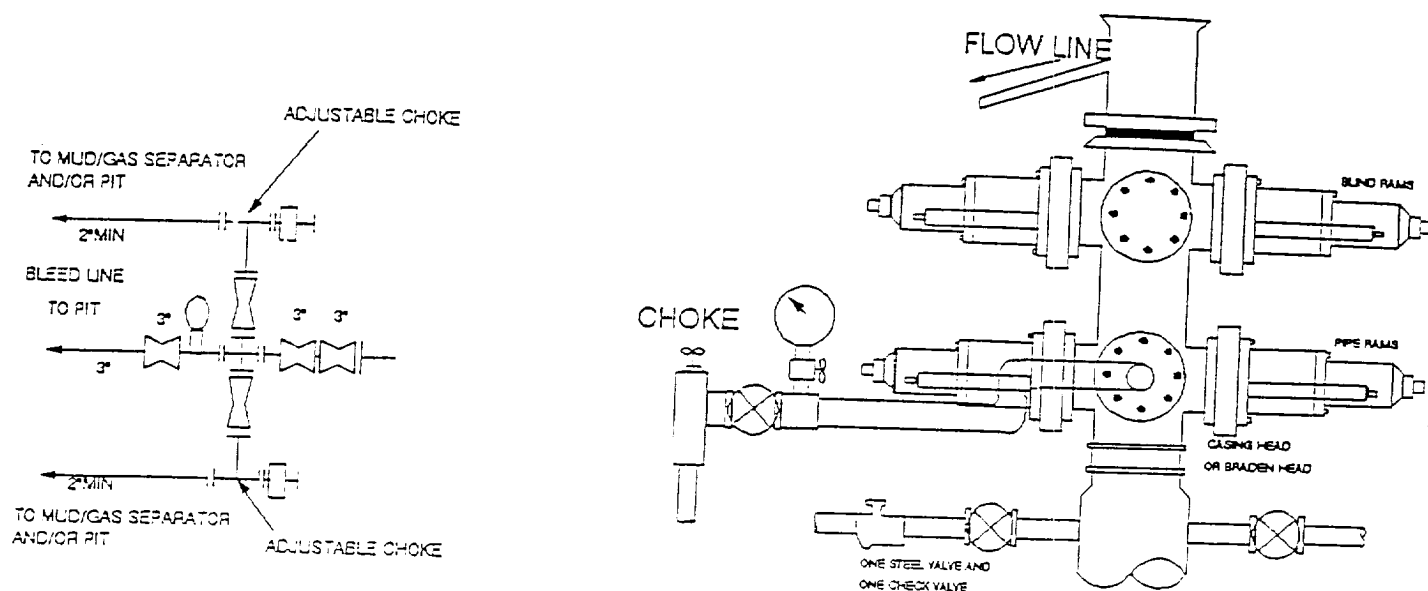
Upon approval

15 days drilling operations

14 days completion operations

BGH/mac
9/12/97

3000 PSI WP



THE FOLLOWING CONSTITUTE MINIMUM BLOWOUT PREVENTER REQUIREMENTS

- A. One double gate blowout preventer with lower rams for pipe and upper rams blind, all hydraulically controlled.
- B. Opening on preventers between rams to be flanged, studed or clamped and at least two inches in diameter.
- C. All connections from operating manifold to preventers to be all steel hose or tube a minimum of one inch in diameter.
- D. The available closing pressure shall be at least 15% in excess of that required with sufficient volume to operate (close, open, and re-close) the preventers.
- E. All connections to and from preventers to have a pressure rating equivalent to that of the BOP's.
- F. Manual controls to be installed before drilling cement plug.
- G. Valve to control flow through drill pipe to be located on rig floor.
- H. All chokes will be adjustable. Choke spool may be used between rams.

DIAGRAM 1