

District I
PO Box 1980, Hobbs, NM 88241-1980
District II
811 S. 1st Street, Artesia, NM 88210-2834
District III
1000 Rio Brazos Rd., Aztec, NM 87410
District IV
2040 South Pacheco, Santa Fe, NM 87505

State of New Mexico
Energy, Minerals & Natural Resources Departn.

OIL CONSERVATION DIVISION
2040 South Pacheco
Santa Fe, NM 87505

Form C-101
Revised October 18, 1994
Instructions on back
Submit to Appropriate District Office
State Lease - 6 Copies
Fee Lease - 5 Copies

☐ AMENDED REPORT

APPLICATION FOR PERMIT TO DRILL, RE-ENTER, DEEPEN, PLUG BACK, OR ADD A ZONE

| | | |
|--|---|--|
| ¹ Operator name and Address ARCO PERMIAN P.O. BOX 1610 MIDLAND, TX 79702 | | ² OGRID Number 000990 |
| ⁴ Property Code 20761 | ⁵ Property Name BARCLAY STATE | ³ API Number 30-0 15-29926 |
| | | ⁶ Well No. 8 |

⁷ Surface Location

| UL or lot no. | Section | Township | Range | Lot. Idn | Feet from the | North/South Line | Feet from the | East/West line | County |
|---------------|---------|----------|-------|----------|---------------|------------------|---------------|----------------|--------|
| 1 | 2 | 23S | 31E | | 990 | NORTH | 470 | EAST | EDDY |

⁸ Proposed Bottom Hole Location If Different From Surface

| UL or lot no. | Section | Township | Range | Lot. Idn | Feet from the | North/South Line | Feet from the | East/West line | County |
|---|---------|----------|-------|----------|-------------------------------|------------------|---------------|----------------|--------|
| | | | | | | | | | |
| ⁹ Proposed Pool 1 LIVINGSTON RIDGE SOUTH (DELAWARE) 96149 | | | | | ¹⁰ Proposed Pool 2 | | | | |

| | | | | |
|-----------------------------------|--------------------------------------|-------------------------------------|--|--|
| ¹¹ Work Type Code N | ¹² Well Type Code O | ¹³ Cable/Rotary R | ¹⁴ Lease Type Code S | ¹⁵ Ground Level Elevation 3447 |
| ¹⁶ Multiple NO | ¹⁷ Proposed Depth 8600 | ¹⁸ Formation DELAWARE | ¹⁹ Contractor PETERSON DR LG | ²⁰ Spud Date 12/97 |

²¹ Proposed Casing and Cement Program

| Hole Size | Casing Size | Casing weight/foot | Setting Depth | Sacks of Cement | Estimated TOC |
|-----------|-------------|--------------------|---------------|-----------------|---------------|
| 17 1/2 | 13 3/8 | 48 | 860 | 775 | SURF |
| 12-1/4 | 8 5/8 | 32 | 4600 | 1800 | SURF |
| 7 7/8 | 5 1/2 | 15.5/17 | 8600 | 860 | 4500 |
| | | | | | |
| | | | | | |

²² Describe the proposed program. If this application is to DEEPEN or PLUG BACK give the data on the present productive zone and proposed new productive zone. Describe the blowout prevention program, if any. Use additional sheets if necessary

Subject well planned as a 8600' straight hole.
3000 psi BOPE will be used from 850' to TD.

Post FD-1
11-14-97
APE & LAC

²³ I hereby certify that the information given above is true and complete to the best of my knowledge and belief.

Signature:

Elizabeth A. Casbeer

Printed name: ELIZABETH A. CASBEER

Title: 11/5/97

OIL CONSERVATION DIVISION

Approved by:

ORIGINAL SIGNED BY TIM W. GUM

Title:

DISTRICT II SUPERVISOR

Approval Date:

NOV 10 1997

Expiration Date:

11-10-98

DISTRICT I
P.O. Box 1980, Hobbs, NM 88241-1980

State of New Mexico
Energy, Minerals and Natural Resources Department

Form C-102
Revised February 10, 1994
Submit to Appropriate District Office
State Lease - 4 Copies
Fee Lease - 3 Copies

DISTRICT II
P.O. Drawer DD, Artesia, NM 88211-0719

DISTRICT III
1000 Rio Brazos Rd., Artec, NM 87410

DISTRICT IV
P.O. Box 2088, Santa Fe, NM 87504-2088

OIL CONSERVATION DIVISION

P.O. Box 2088
Santa Fe, New Mexico 87504-2088

☐ AMENDED REPORT

WELL LOCATION AND ACREAGE DEDICATION PLAT

| | | |
|-----------------------------------|---------------------------------------|---|
| API Number 30-015-29926 | Pool Code 96149 | Pool Name LIVINGSTON RIDGE SOUTH (DELAWARE) |
| Property Code 20761 | Property Name BARCLAY STATE | Well Number 8 |
| OGRID No. 000990 | Operator Name ARCO PERMIAN | Elevation 3447 |

Surface Location

| UL or lot No. | Section | Township | Range | Lot Idn | Feet from the | North/South line | Feet from the | East/West line | County |
|---------------|---------|----------|-------|---------|---------------|------------------|---------------|----------------|--------|
| 1 | 2 | 23 S | 31 E | | 990 | NORTH | 470 | EAST | EDDY |

Bottom Hole Location If Different From Surface

| UL or lot No. | Section | Township | Range | Lot Idn | Feet from the | North/South line | Feet from the | East/West line | County |
|---------------|---------|----------|-------|---------|---------------|------------------|---------------|----------------|--------|
| | | | | | | | | | |

| | | | |
|------------------------------|-----------------|--------------------|-----------|
| Dedicated Acres 40 | Joint or Infill | Consolidation Code | Order No. |
|------------------------------|-----------------|--------------------|-----------|

NO ALLOWABLE WILL BE ASSIGNED TO THIS COMPLETION UNTIL ALL INTERESTS HAVE BEEN CONSOLIDATED
OR A NON-STANDARD UNIT HAS BEEN APPROVED BY THE DIVISION

| | | | |
|-----------------|-----------------|-----------------|-----------------|
| LOT 4 39.49 AC. | LOT 3 39.64 AC. | LOT 2 39.78 AC. | LOT 1 39.95 AC. |
| | | | |
| | | | |
| | | | |

Diagram showing well location relative to LOT 1 (39.95 AC.). The well is located 990' North and 470' East of the corner of LOT 1.

OPERATOR CERTIFICATION

I hereby certify the the information contained herein is true and complete to the best of my knowledge and belief.

Elizabeth A. Casbeer
Signature
ELIZABETH A. CASBEER
Printed Name
REG. COMP. ANALYST
Title
11/5/97
Date

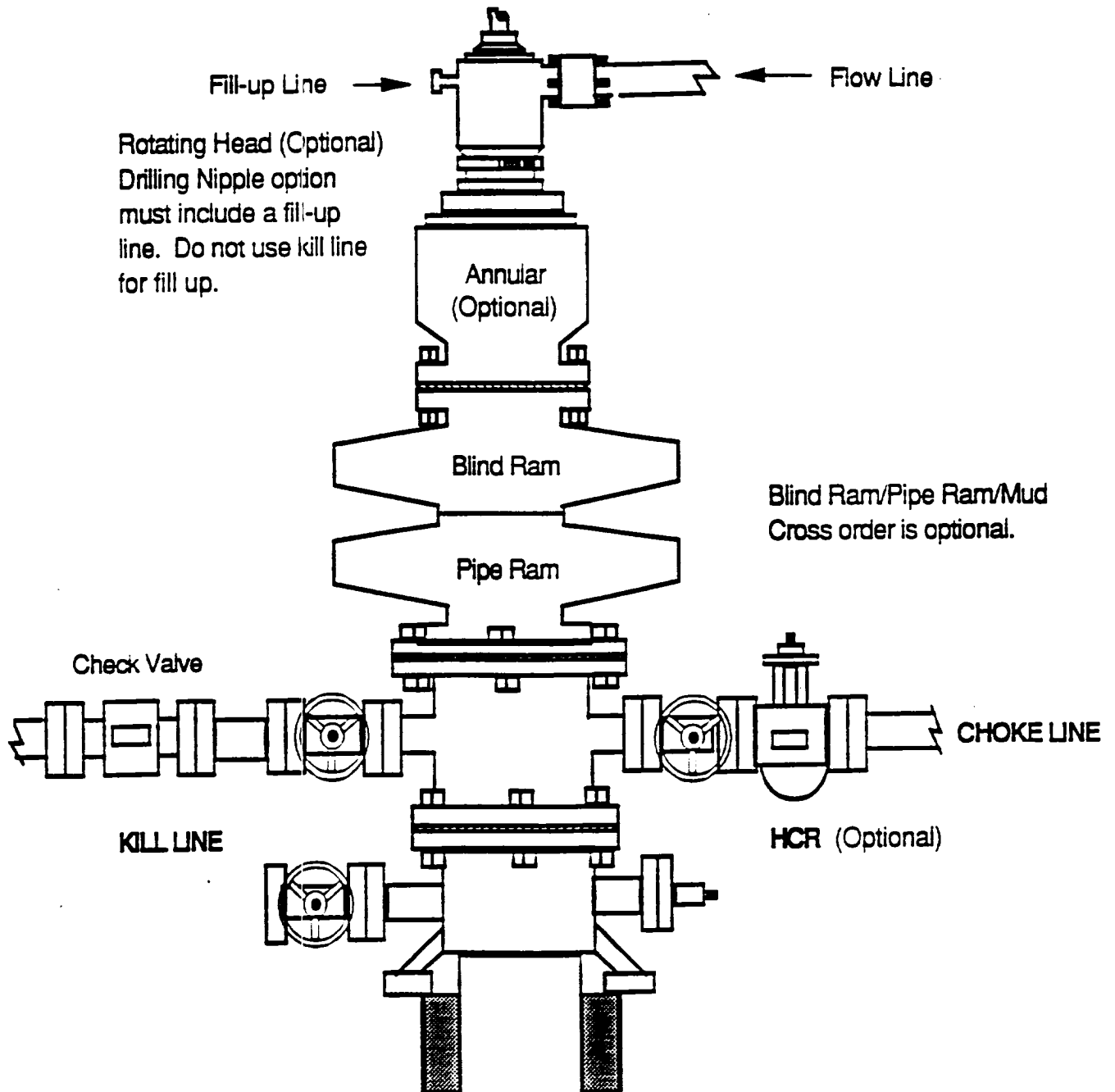
SURVEYOR CERTIFICATION

I hereby certify that the well location shown on this plat was plotted from field notes of actual surveys made by me or under my supervision, and that the same is true and correct to the best of my belief.

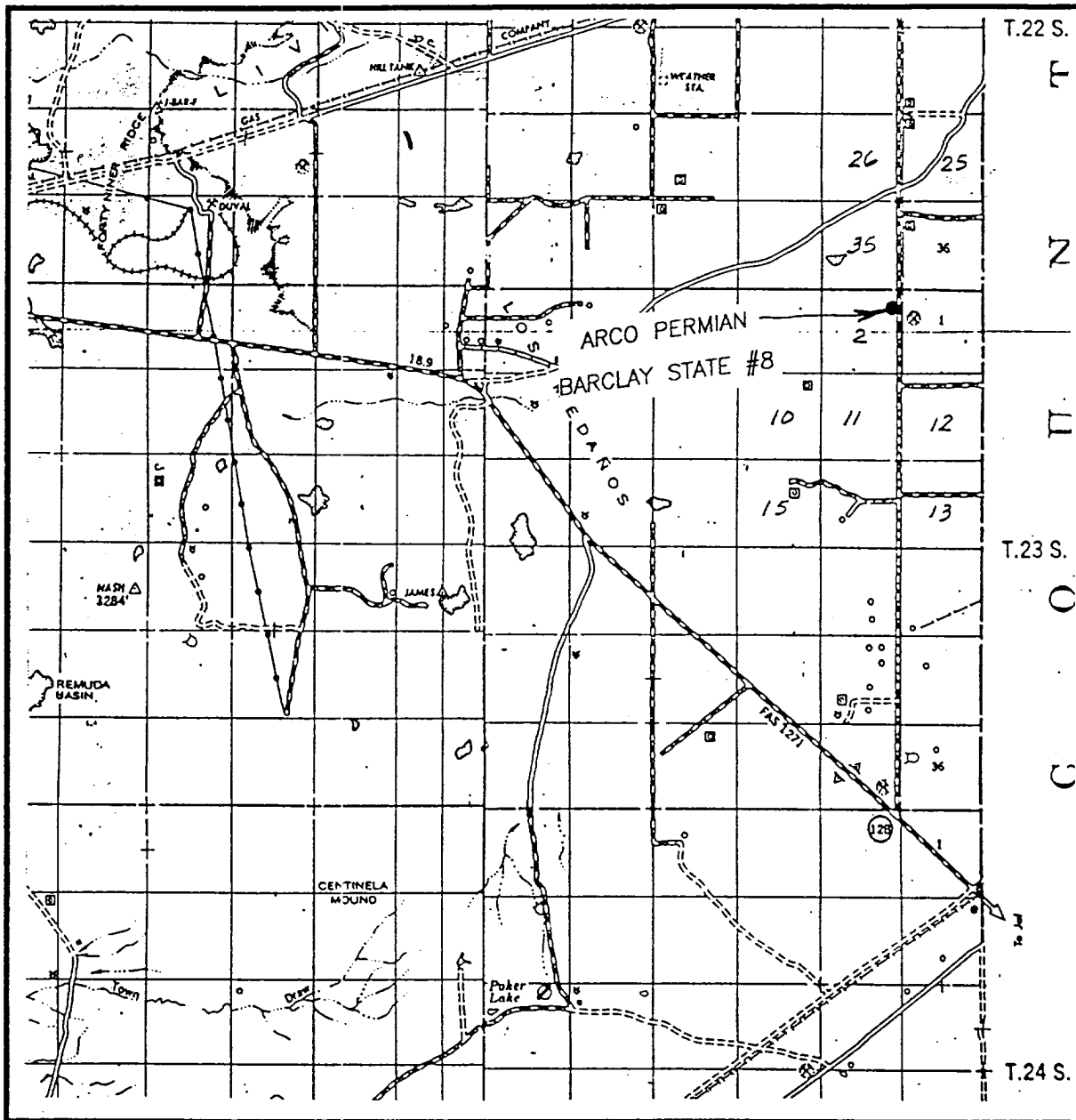
OCTOBER 21, 1997
Date Surveyed
JLP

Ronald J. Eidson
Signature
Professional Surveyor
Professional Surveyor
NEW MEXICO
10-27-97
P.O. Num. 97-181698
Certificate No. **RONALD J. EIDSON, 3239**
GARY C. EIDSON, 12641
PROFESSOR McDONALD, 12185

DRILLING OPERATIONS
CLASS - 1: NORMAL PRESSURE < 10 PPG
OPTION - 1: ARCO STANDARD BOPE STACK



VICINITY MAP



SCALE: 1" = 2 MILES

SEC. 2 TWP. 23-S RGE. 31-E

SURVEY N.M.P.M.

COUNTY EDDY

DESCRIPTION 990' FNL & 470' FEL

ELEVATION 3447'

OPERATOR ARCO PERMIAN

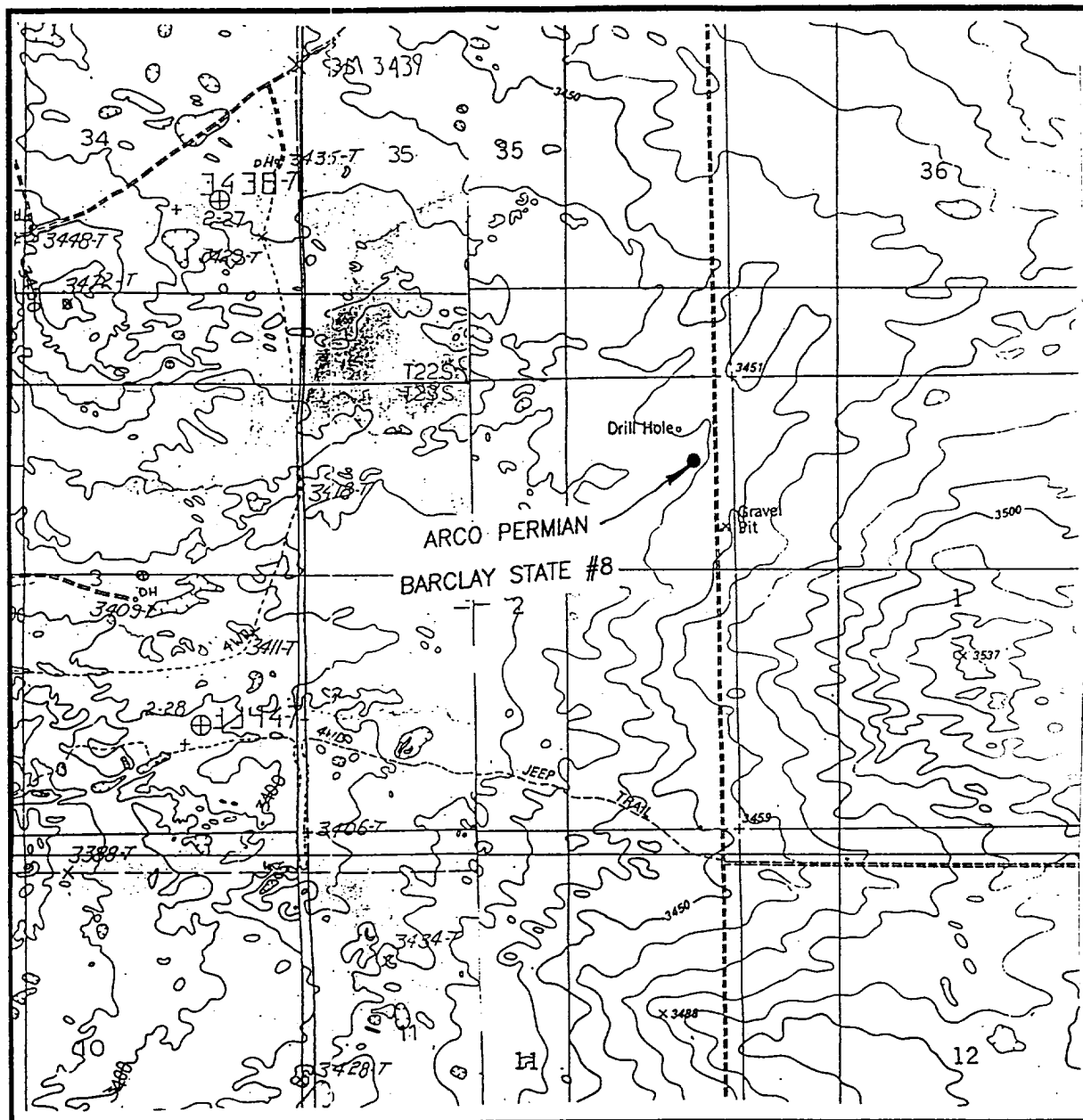
LEASE BARCLAY FEDERAL

JOHN WEST ENGINEERING

HOBBS, NEW MEXICO

(505) 393-3117

LOCATION VERIFICATION MAP



SCALE: 1" = 2000'

CONTOUR INTERVAL - 10'

SEC. 2 TWP. 23-S RGE. 31-E

SURVEY N.M.P.M.

COUNTY EDDY

DESCRIPTION 990' FNL & 470' FEL

ELEVATION 3447'

OPERATOR ARCO PERMIAN

LEASE BARCLAY FEDERAL

U.S.G.S. TOPOGRAPHIC MAP

BOOTLEG RIDGE, & LOS MEDANOS, N.M.

JOHN WEST ENGINEERING
HOBBS, NEW MEXICO
(505) 393-3117