

District I
PO Box 1980, Hobbs, NM 88241-1980
District II
811 South First, Artesia, NM 88210
District III
1000 Rio Brazos Rd., Aztec, NM 87410
District IV
2040 South Pacheco, Santa Fe, NM 87505

State of New Mexico
Energy, Minerals & Natural Resources Department

OIL CONSERVATION DIVISION
2040 South Pacheco
Santa Fe, NM 87505

Form C-101
Revised October 18, 1994
Instructions on back
Submit to Appropriate District Office
State Lease - 6 Copies
Fee Lease - 5 Copies

☐ AMENDED REPORT

APPLICATION FOR PERMIT TO DRILL, RE-ENTER, DEEPEN, PLUGBACK, OR ADD A ZONE

Operator Name and Address: RAM ENERGY, INC 601 N. MARIENFELD, SUITE 102 MIDLAND, TX 79701		OGRID Number 018890
Property Name SOUTH CULEBRA BLUFF		API Number 30-015-30164
Property Code 009456	Well No. 13	

Surface Location

UL or lot no.	Section	Township	Range	Lot Idn	Feet from the	North/South line	Feet from the	East/West line	County
F	23	23-S	28-E		1650'	NORTH	1650'	WEST	EDDY

Proposed Bottom Hole Location If Different From Surface

UL or lot no.	Section	Township	Range	Lot Idn	Feet from the	North/South line	Feet from the	East/West line	County
Proposed Pool 1 E. LOUING BRUSHY CANYON					Proposed Pool 2				

Work Type Code N	Well Type Code O	Cable/Rotary ROTARY	Lease Type Code P	Ground Level Elevation 3026'
Multiple	Proposed Depth 6500	Formation DELAWARE	Contractor N/A	Spud Date 6-15-98

Proposed Casing and Cement Program

Hole Size	Casing Size	Casing weight/foot	Setting Depth	Sacks of Cement	Estimated TOC
12 1/4"	8 5/8"	24-32#	550	500	Surface
7 7/8"	5 1/2"	15.5-17#	6500	1500	Surface

Describe the proposed program. If this application is to DEEPEN or PLUG BACK give the data on the present productive zone and proposed new productive zone. Describe the blowout prevention program, if any. Use additional sheets if necessary.

1. Drill 12 1/4" hole to depth of 550'.
2. Set 8 5/8" casing to 550 and cement same to surface.
3. Test casing and B.O.P.'s to 1500 psi, prior to drilling out shoe joint.
4. Drill 7 7/8" hole to a depth of 6500', log and evaluate.

Posted ID-1
N/A API
4-10-98

I hereby certify that the information given above is true and complete to the best of my knowledge and belief.

Signature: *Tim Goudeau*
Printed name: Tim Goudeau
Title: Region Manager

OIL CONSERVATION DIVISION

Approved by: ORIGINAL SIGNED BY TIM W. GUM
Title: DISTRICT II SUPERVISOR

Approval Date: APR 2 1998
Expiration Date: 4-2-99

DISTRICT I
P.O. Box 1980, Hobbs, NM 88241-1980

DISTRICT II
P.O. Drawer 80, Artesia, NM 88211-0719

DISTRICT III
1000 Rio Brazos Rd., Aztec, NM 87410

DISTRICT IV
P.O. BOX 2088, SANTA FE, N.M. 87504-2088

State of New Mexico
Energy, Minerals and Natural Resources Department

Form C-102
Revised February 10, 1994
Submit to Appropriate District Office
State Lease - 4 Copies
Fee Lease - 3 Copies

OIL CONSERVATION DIVISION
P.O. Box 2088
Santa Fe, New Mexico 87504-2088

☐ AMENDED REPORT

WELL LOCATION AND ACREAGE DEDICATION PLAT

API Number	Pool Code 40350	Pool Name LOVING BRUSHY CANYON, EAST
Property Code 009456	Property Name SCB 23	Well Number 13
OGRID No. 018890	Operator Name RAM ENERGY, INC.	Elevation 3026'

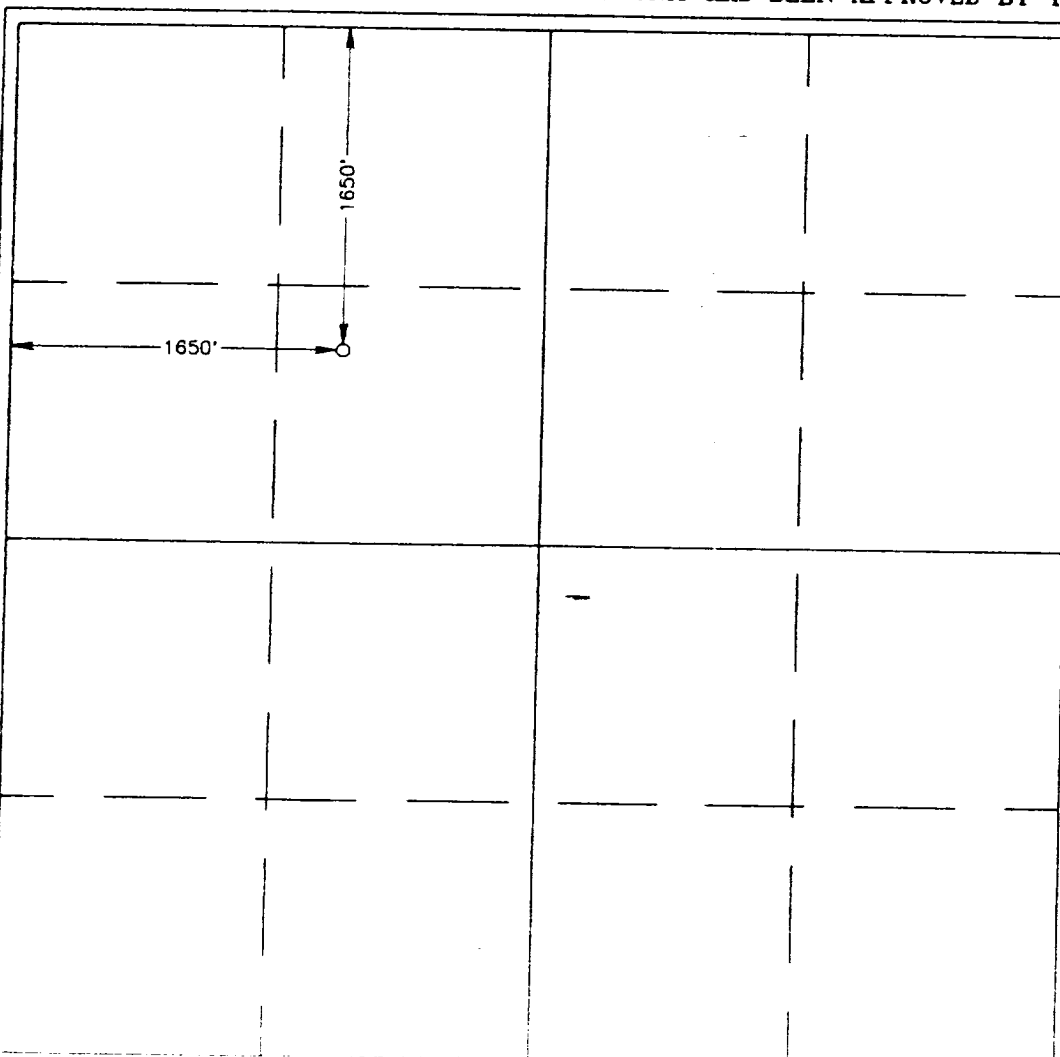
Surface Location

UL or lot No. F	Section 23	Township 23 S	Range 28 E	Lot Idn	Feet from the 1650	North/South line NORTH	Feet from the 1650	East/West line WEST	County EDDY
--------------------	---------------	------------------	---------------	---------	-----------------------	---------------------------	-----------------------	------------------------	----------------

Bottom Hole Location If Different From Surface

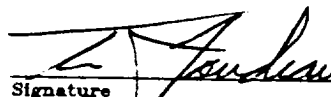
UL or lot No.	Section	Township	Range	Lot Idn	Feet from the	North/South line	Feet from the	East/West line	County
Dedicated Acres	Joint or Infill	Consolidation Code	Order No.						

NO ALLOWABLE WILL BE ASSIGNED TO THIS COMPLETION UNTIL ALL INTERESTS HAVE BEEN CONSOLIDATED
OR A NON-STANDARD UNIT HAS BEEN APPROVED BY THE DIVISION



OPERATOR CERTIFICATION

I hereby certify the the information
contained herein is true and complete to the
best of my knowledge and belief.

Signature 

Printed Name
Tim Goudeau

Title
Region Manager

Date
3-5-98

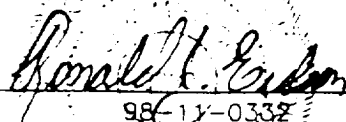
SURVEYOR CERTIFICATION

I hereby certify that the well location shown
on this plat was plotted from field notes of
actual surveys made by me or under my
supervision, and that the same is true and
correct to the best of my belief.

FEBRUARY 23, 1998

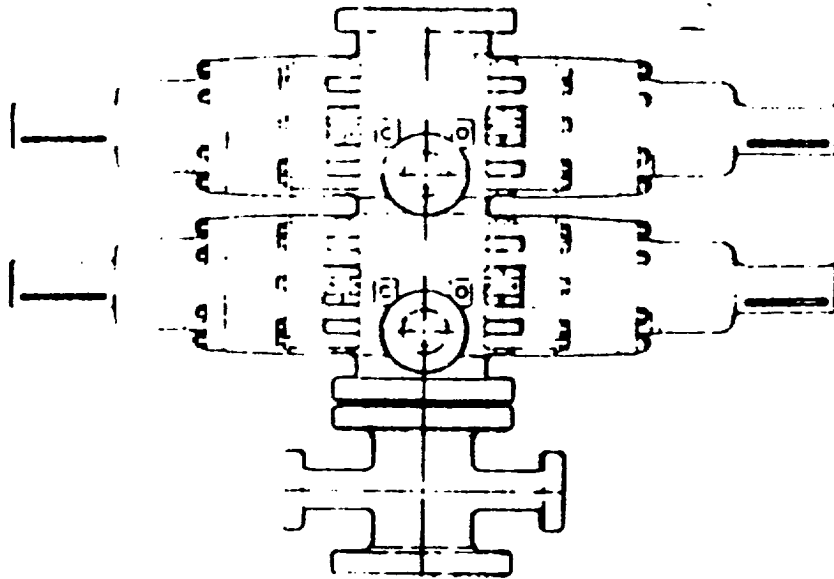
Date Surveyed
CDG

Signature & Seal of
Professional Surveyor

 3-03-98
98-11-0332

Certificate No. RONALD H. EDSON 3239
GARY EDSON 12641

BLOW OUT PREVENTION EQUIPMENT



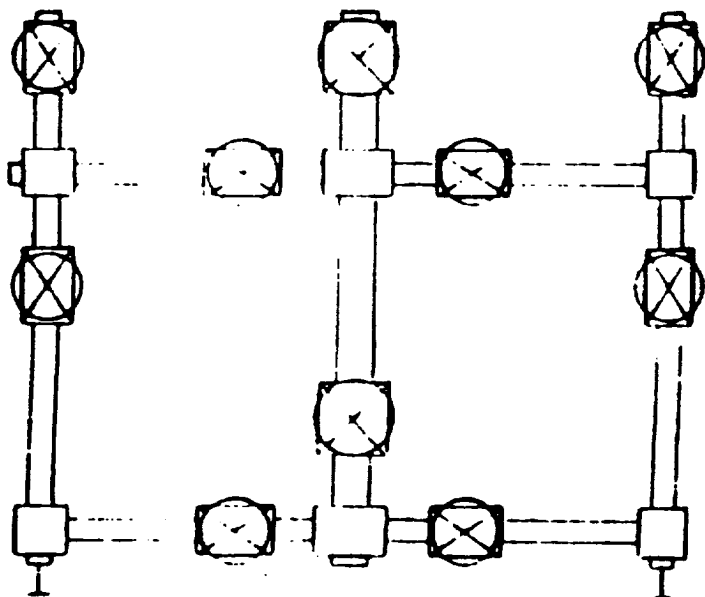
BOP Stack

- 1 Rucker Shaffer "B" double ram
10" - 3000 psi WP

Closing Unit

- Hydral model 80 three station
accumulator
- Controls located in accumulator
house and on rig floor

CHOKE MANIFOLD



900 Series, 3000 psi WP

PLAT #2