

DISTRICT I  
P.O. Box 1980, Hobbs, NM 88241-1980

DISTRICT II  
P.O. Drawer DD, Artesia, NM 88211-0719

DISTRICT III  
1000 Rio Brazos Rd., Artec, NM 87410

DISTRICT IV  
P.O. BOX 2088, SANTA FE, N.M. 87504-2088

State of New Mexico  
Energy, Minerals and Natural Resources Department

Form C-102  
Revised February 10, 1994  
Submit to Appropriate District Office  
State Lease - 4 Copies  
Fee Lease - 3 Copies

OIL CONSERVATION DIVISION  
P.O. Box 2088  
Santa Fe, New Mexico 87504-2088

☐ AMENDED REPORT

WELL LOCATION AND ACREAGE DEDICATION PLAT

API Number	Pool Code <del>11540</del> 96473	Pool Name Pierce Crossing Bone Springs <del>Artesia Canyon (detached)</del> , <del>249</del>
Property Code 17565	Property Name HARROUN 15	Well Number 8
OGRID No. C17891	Operator Name POGO PRODUCING COMPANY	Elevation 2930

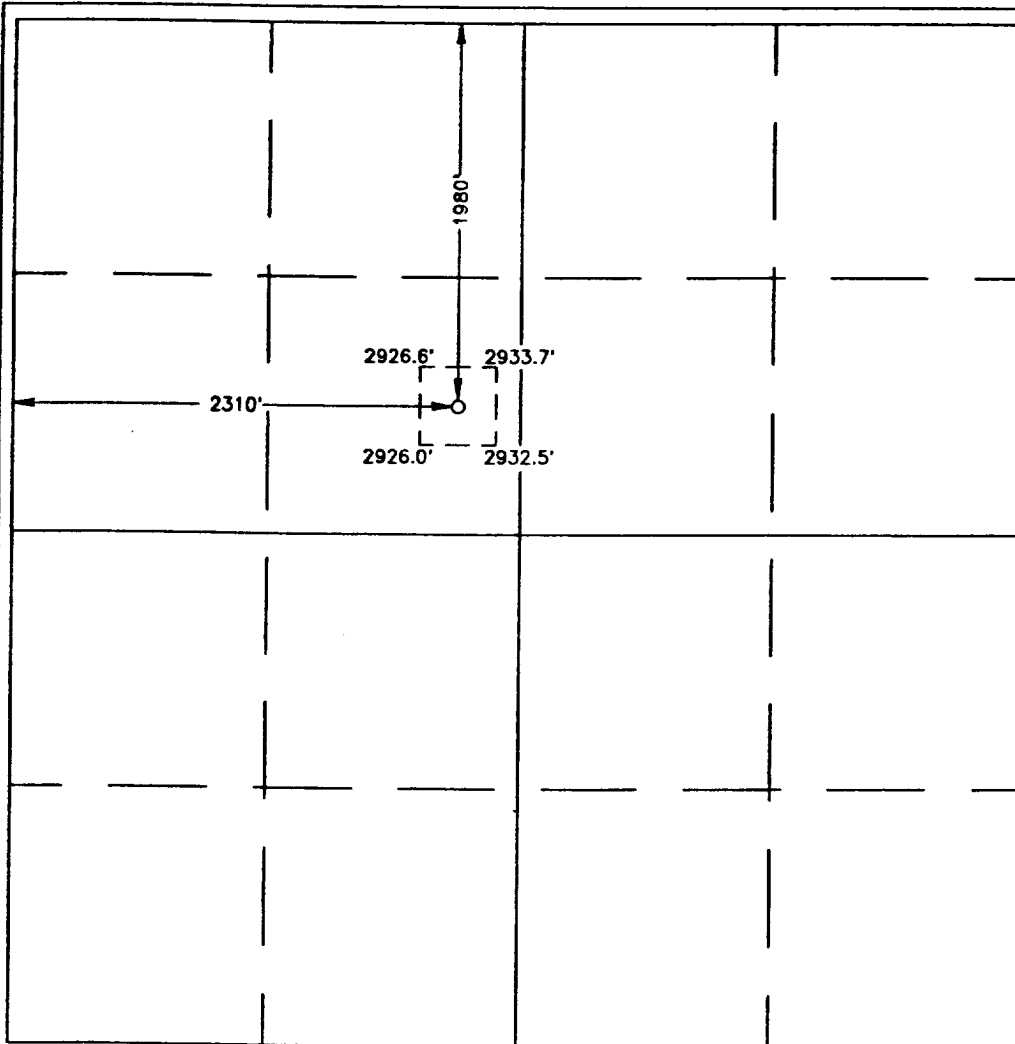
Surface Location

UL or lot No.	Section	Township	Range	Lot Idn	Feet from the	North/South line	Feet from the	East/West line	County
F	15	24 S	29 E		1980	NORTH	2310	WEST	EDDY

Bottom Hole Location If Different From Surface

UL or lot No.	Section	Township	Range	Lot Idn	Feet from the	North/South line	Feet from the	East/West line	County
Dedicated Acres	Joint or Infill	Consolidation Code	Order No.						

NO ALLOWABLE WILL BE ASSIGNED TO THIS COMPLETION UNTIL ALL INTERESTS HAVE BEEN CONSOLIDATED  
OR A NON-STANDARD UNIT HAS BEEN APPROVED BY THE DIVISION



<b>OPERATOR CERTIFICATION</b>	
I hereby certify the the information contained herein is true and complete to the best of my knowledge and belief.	
<u>James M. C. Ritchie, Jr.</u>	
Signature	
<u>James M. C. Ritchie, Jr.</u>	
Printed Name	
<u>AGENT</u>	
Title	
<u>05/18/98</u>	
Date	
<b>SURVEYOR CERTIFICATION</b>	
I hereby certify that the well location shown on this plat was plotted from field notes of actual surveys made by me or under my supervision, and that the same is true and correct to the best of my belief.	
APRIL 30, 1998	
Date Surveyed	DMCC
<u>Ronald E. Edison</u>	
Signature of Surveyor	
<u>5-04-98</u>	
Professional Surveyor	
1983-07-15	
Certificate No.	RONALD E. EDISON 3239
	CARL E. EDISON 12641
	WILLIAM J. EDWARDS 12185