

UNITED STATES
DEPARTMENT OF THE INTERIOR
BUREAU OF LAND MANAGEMENTN. M. OIL CONS. DIVISION
SUBMIT (Other instructions on
811 S. (Other instructions on
ARTESIA, NM 87003-2000
801FORM APPROVED
OMB NO. 1004-0136
Expires: February 28, 1995

APPLICATION FOR PERMIT TO DRILL OR DEEPEN

1a. TYPE OF WORK

DRILL ☒DEEPEN ☐

b. TYPE OF WELL

OIL
WELL ☒GAS
WELL ☐OTHER ☐SINGLE
ZONE ☒MULTIPLE
ZONE ☐

2. NAME OF OPERATOR

POGO PRODUCING COMPANY (RICHARD WRIGHT) 915-685-8140

3. ADDRESS AND TELEPHONE NO.

P.O. BOX 10340 MIDLAND, TEXAS 79702-7340 915-685-8140

4. LOCATION OF WELL (Report location clearly and in accordance with any State requirements.)*

At surface

1485' FNL & 1310' FWL SEC. 24 T23S-R31E EDDY CO. NM

At proposed prod. zone SAME

14. DISTANCE IN MILES AND DIRECTION FROM NEAREST TOWN OR POST OFFICE*

Approximately 25 miles East of Loving New Mexico.

15. DISTANCE FROM PROPOSED*

LOCATION TO NEAREST
PROPERTY OR LEASE LINE, FT.
(Also to nearest drlg. unit line, if any)

1310'

19. DISTANCE FROM PROPOSED LOCATION*

TO NEAREST WELL, DRILLING COMPLETED,
OR APPLIED FOR, ON THIS LEASE, FT.

300'

18. NO. OF ACRES IN LEASE

320

19. PROPOSED DEPTH

8500'

17. NO. OF ACRES ASSIGNED
TO THIS WELL

40

20. ROTARY OR CABLE TOOLS

ROTARY

21. ELEVATIONS (Show whether DF, RT, GR, etc.)

3501' GR.

22. APPROX. DATE WORK WILL START*

WHEN APPROVED

23.

PROPOSED CASING AND CEMENTING PROGRAM

SIZE OF HOLE	GRADE SIZE OF CASING	WEIGHT PER FOOT	SETTING DEPTH	QUANTITY OF CEMENT
25"	Conductor 20"	NA	40'	Cement to surface with Redi-mix.
14 3/4"	H-40 10 3/4"	32.7	800'	650 Sx. circulate to surface.
9 7/8"	J-55 7 5/8"	26.4	4350'	1150 Sx. " " "
6 3/4"	J-55, N-80 4 1/2"	11.6	8500'	1400 Sx. Top of cement 3800'

1. Drill 25" hole to 40'. Set 40' of 20" conductor pipe and cement to surface with Redi-mix.
2. Drill 14 3/4" hole to 800'. Run and set 800' of 10 3/4" H-40 32.75# ST&C casing. Cement with 650 Sx. of Class "C" cement + additives, circulate cement to surface.
3. Drill 9 7/8" hole to 4350'. Run and set 4350' of 7 5/8" J-55 26.4# ST&C casing. Cement with 1150 Sx. of Class "C" cement + additives, circulate cement to surface.
4. Drill 6 3/4" hole to 8500'. Run and set 8500' of 4 1/2" casing as follows: 1500' of N-80 11.6# LT&C, 5500' of J-55 11.6# LT&C, 1500' of N-80 11.6# LT&C casing. Cement with 1400 Sx. of Class "H" Premium Plus cement + additives, top of cement 3800'±.

IN ABOVE SPACE DESCRIBE PROPOSED PROGRAM: If proposal is to deepen, give data on present productive zone and proposed new productive zone. If proposal is to drill or deepen directionally, give pertinent data on subsurface locations and measured and true vertical depths. Give blowout prevention program, if any.

24.

SIGNED

TITLE

Agent

DATE

06/27/98

(This space for Federal or State office use)

PERMIT NO.

APPROVAL DATE

Application approval does not warrant or certify that the applicant holds legal or equitable title to those rights in the subject lease which would entitle the applicant to conduct operations thereon.
CONDITIONS OF APPROVAL, IF ANY:

APPROVED BY

TITLE

Acting STATE DIRECTOR

DATE

7/28/98

*See Instructions On Reverse Side

Title 18 U.S.C. Section 1001, makes it a crime for any person knowingly and willfully to make to any department or agency of the United States any false, fictitious or fraudulent statements or representations as to any matter within its jurisdiction.

RECEIVED
JUN 29 1998
FBI - NEW YORK

1998 JUN 29 A 9 32

RECEIVED

DISTRICT I
P.O. Box 1980, Hobbs, NM 88241-1980

State of New Mexico
Energy, Minerals and Natural Resources Department

Form C-102
Revised February 10, 1994
Submit to Appropriate District Office
State Lease - 4 Copies
Fee Lease - 3 Copies

DISTRICT II
P.O. Drawer 80, Artesia, NM 88211-0719

DISTRICT III
1000 Rio Brazos Rd., Artec, NM 87410

OIL CONSERVATION DIVISION

P.O. Box 2088
Santa Fe, New Mexico 87504-2088

DISTRICT IV
P.O. Box 2088, Santa Fe, NM 87504-2088

☐ AMENDED REPORT

WELL LOCATION AND ACREAGE DEDICATION PLAT

API Number	Pool Code	Pool Name
	33745	INGLE WELLS-DELAWARE
Property Code	Property Name	Well Number
	AMAX "24" FEDERAL	14
OGRID No.	Operator Name	Elevation
17891	POGO PRODUCING COMPANY	3501

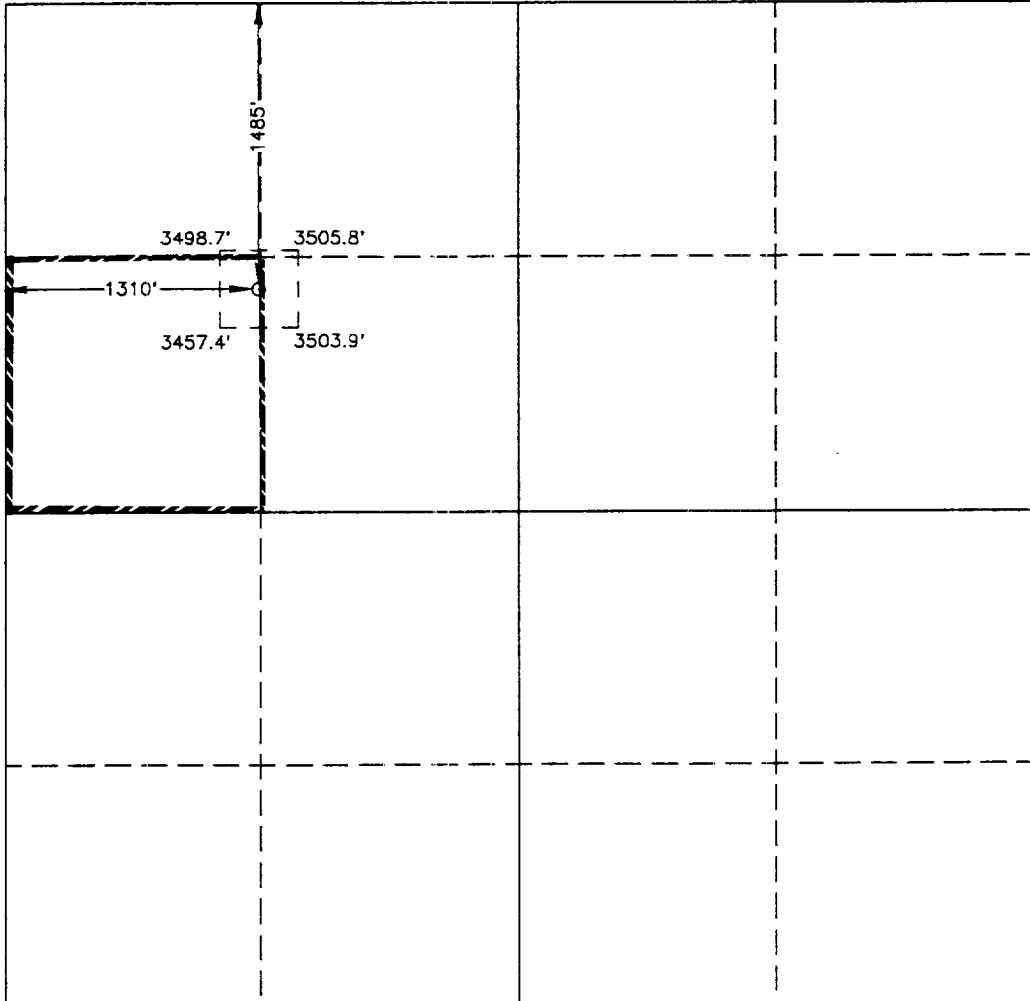
Surface Location

UL or lot No.	Section	Township	Range	Lot Idn	Feet from the	North/South line	Feet from the	East/West line	County
E	24	23 S	31 E		1485	NORTH	1310	WEST	EDDY

Bottom Hole Location If Different From Surface

UL or lot No.	Section	Township	Range	Lot Idn	Feet from the	North/South line	Feet from the	East/West line	County
Dedicated Acres	Joint or Infill	Consolidation Code	Order No.						
40									

NO ALLOWABLE WILL BE ASSIGNED TO THIS COMPLETION UNTIL ALL INTERESTS HAVE BEEN CONSOLIDATED
OR A NON-STANDARD UNIT HAS BEEN APPROVED BY THE DIVISION

	<p>OPERATOR CERTIFICATION</p> <p>I hereby certify the the information contained herein is true and complete to the best of my knowledge and belief.</p> <p><i>Joe T. Janica</i> Signature</p> <p>Joe T. Janica Printed Name</p> <p>Agent</p> <p>Title</p> <p>06/27/98 Date</p>
	<p>SURVEYOR CERTIFICATION</p> <p>I hereby certify that the well location shown on this plat was plotted from field notes of actual surveys made by me or under my supervision, and that the same is true and correct to the best of my belief.</p> <p>JUNE 12, 1998 Date Surveyed</p> <p>JLP</p> <p>Signature & Seal of Professional Surveyor</p> <p><i>Ronald J. Eidson</i> Professional Surveyor</p> <p>W.O. Num. 98-11-0886</p> <p>Certificate No. RONALD J. EIDSON, 3239 GARY G. EIDSON, 12641 RONALD J. EIDSON, 12185</p>

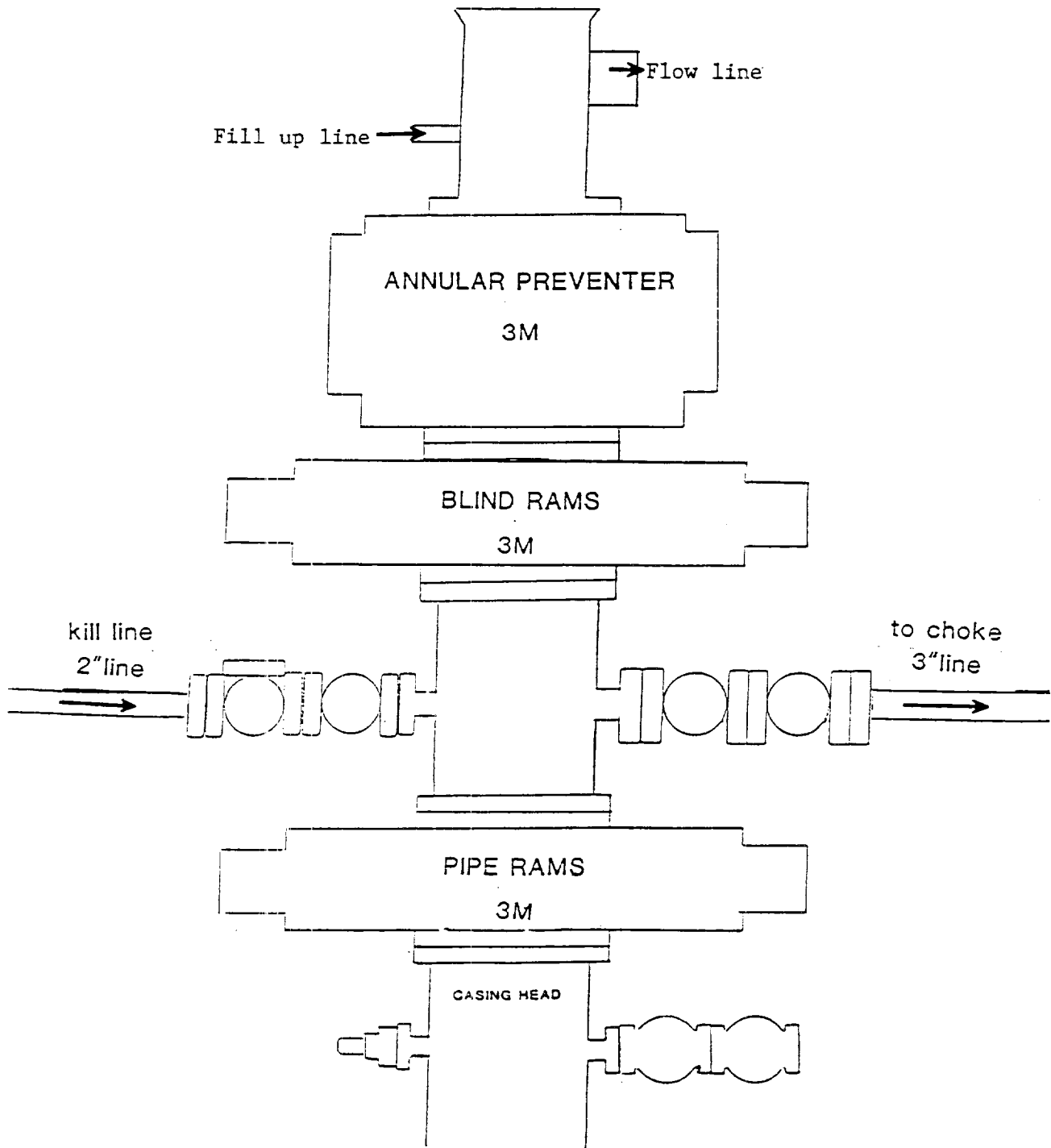
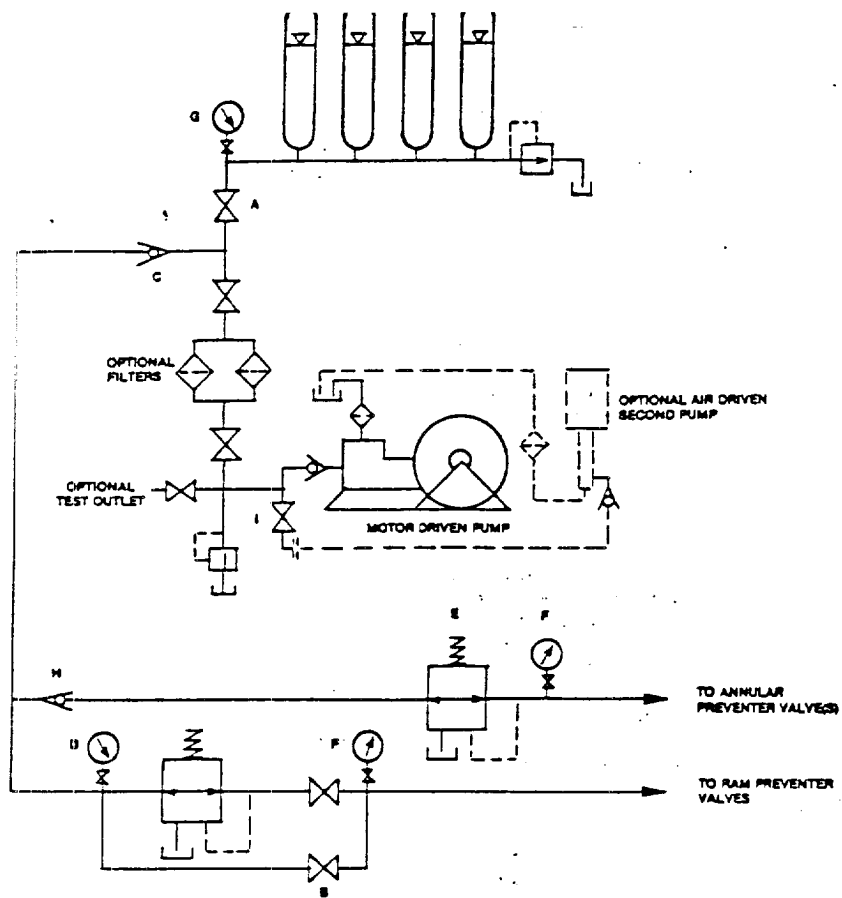


EXHIBIT "E"
B.O.P. SKETCH TO BE USED ON

POGO PRODUCING COMPANY
AMAX "24" FEDERAL #14
UNIT "E" SECTION 24
T23S-R31E EDDY CO. N.M.



HAND AJUSTABLE CHOKE

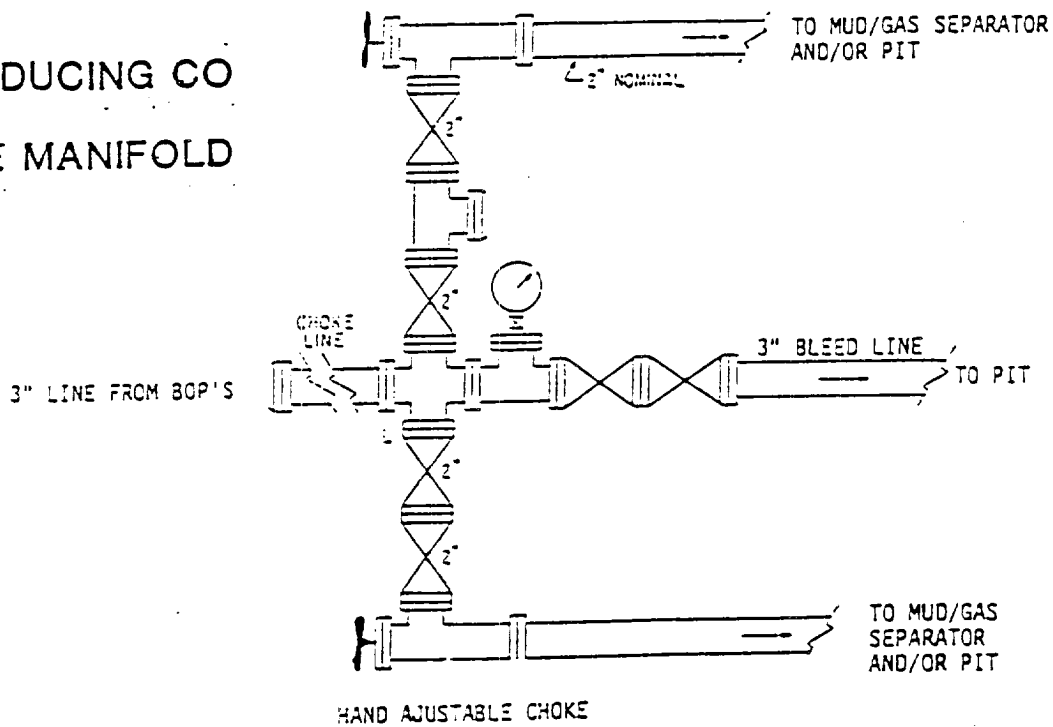


EXHIBIT "1-E"
CHOKE MANIFOLD & CLOSING UNIT

POGO PRODUCING COMPANY
AMAX "24" FEDERAL #14
UNIT "E" SECTION 24
T23S-R31E EDDY CO. N.M.