

District I
PO Box 1980, Hobbs, N.M. 88241-1980
District II
P.O. Drawer DD, Artesia, N.M. 88211-0719
District III
1000 Rio Brazos Rd., Aztec, N.M. 87410
District IV
P.O. Box 2088, Santa Fe, N.M. 87504-2088

State of New Mexico
Energy, Minerals & Natural Resources Department

OIL CONSERVATION DIVISION
PO Box 2088
Santa Fe, NM 87504-2088

Form C-1010
Revised February 10, 1994
Instructions on back
Submit to Appropriate District Office
State Lease - 6 Copies
Fee lease - 5 Copies

☐ AMENDED REPORT

APPLICATION FOR PERMIT TO DRILL, RE-ENTER, DEEPEN, PLUGBACK, OR ADD A ZONE

| | | |
|---|--|--------------------------|
| 1 Operator Name and Address Pogo Producing Company P.O. Box 10340 Midland, Texas 79702 | | 2 OGRID Number 017891 |
| 3 API Number 30-015-30375 | | 4 Property Code 23614 |
| 5 Property Name Harroun "10" | | 6 Well No. 1 |

7 Surface Location

| UL or Lot No. | Section | Township | Range | Lot Idn | Feet from the | North/South line | Feet from the | East/West line | County |
|---------------|---------|----------|-------|---------|---------------|------------------|---------------|----------------|--------|
| N | 10 | 24S | 29E | | 660 | South | 2310 | West | Eddy |

8. Proposed Bottom Hole Location If Different From Surface

| UL or Lot No. | Section | Township | Range | Lot Idn | Feet from the | North/South line | Feet from the | East/West line | County |
|---------------|---------|----------|-------|---------|---------------|------------------|---------------|----------------|--------|
| 96473 | | | | | | | | | |

9. Proposed Pool 1
Pierce Crossing (Bone Springs), East

10. Proposed Pool 2

| | | | | |
|-------------------------|------------------------------|-------------------------------|--------------------------|-------------------------------------|
| 11. Work Type Code N | 12. Well Type Code O | 13. Cable/Rotary R | 14. Lease Type Code S | 15. Ground Level Elevation 2944' |
| 16. Multiple S | 17. Proposed Depth 7,000' | 18. Formation Bone Springs | 19. Contractor N/A | 20. Spud Date Upon Approval |

21. Proposed Casing and Cement Program

| Hole Size | Casing Size | Casing weight/foot | Setting Depth | Sacks of Cement | Estimated TOC |
|-----------|-------------------------------|--------------------|---------------|-----------------|---------------|
| 14-3/4" | 10-3/4" | 32.75# H-40 | 550' | 500 sx | Surface |
| 9-7/8" | 7-5/8" | 26.40# J-55 | 2950' | 900 sx | Surface |
| 6-3/4" | 4-1/2" | 11.60# J-55 | 7000' | 900 sx | 2900' |
| 18 Hours | WOC on 10 3/4 & 7 5/8" casing | | | | |

22. Describe the proposed program. If this is to DEEPEN or PLUG BACK give the data on the present productive zone and proposed new productive zone. Describe the blowout prevention program, if any. Use additional sheets if necessary.

This proposed well is a Bone Springs Test.
B.O.P. Sketch attached.

Post ID-1
8-21-98
API & Loc

23. I hereby certify that the information given above is true and complete to the best of my knowledge and belief.

Signature:

Printed Name:

James M.C. Ritchie, Jr.

Title:

Agent

Date:

07/26/98

Phone:

(915) 682-6601

OIL CONSERVATION DIVISION

Approved by:

ORIGINAL SIGNED BY TIM W. GUM

Title:

DISTRICT II SUPERVISOR

Approval Date:

8-18-98

Expiration Date:

8-18-99

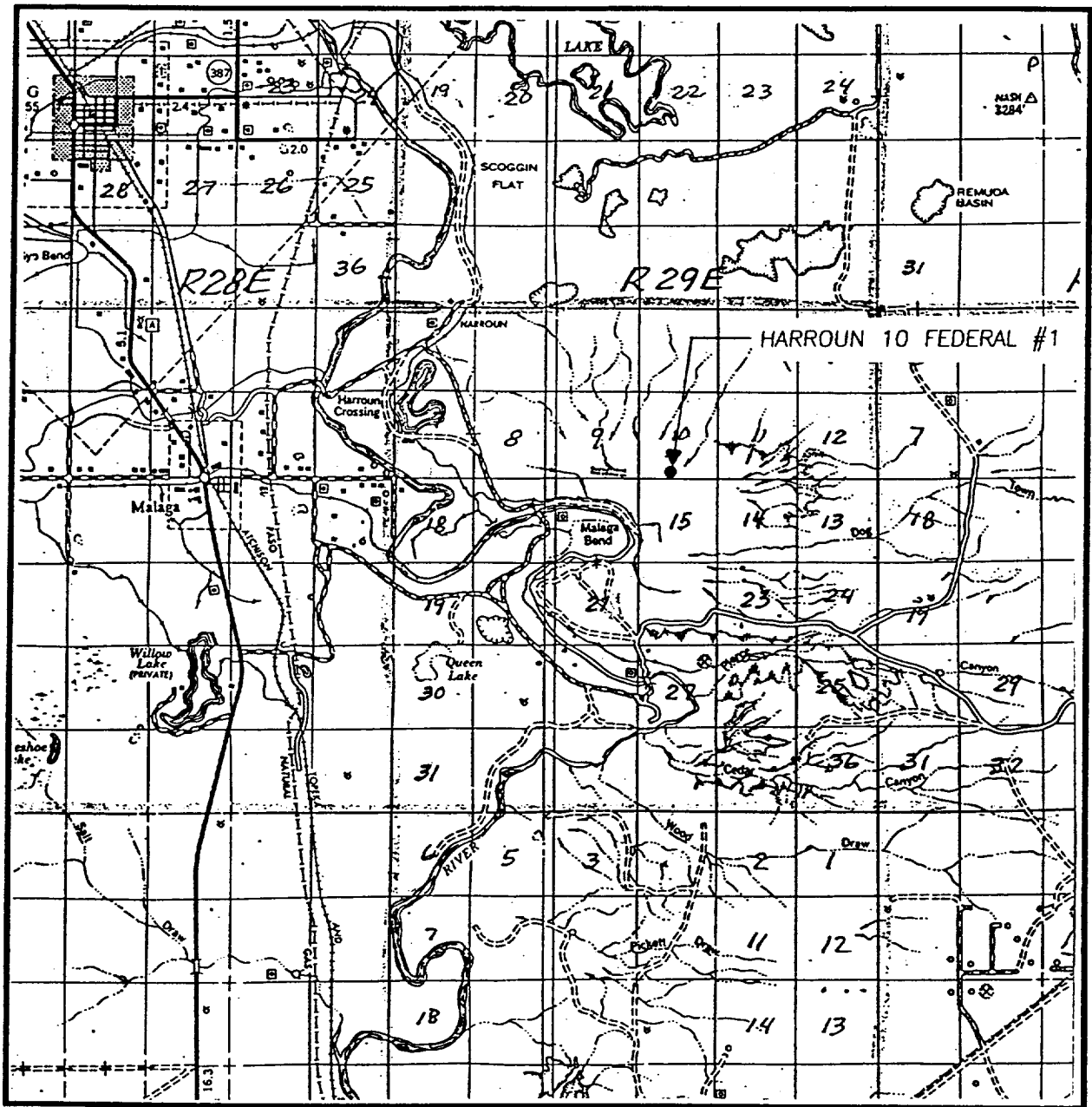
Conditions of Approval:

Attached: ☐

Form C-102
Revised February 10, 1994
Submit to Appropriate District Office
State Lease - 4 Copies
Fee Lease - 3 Copies

| | |
|--|--|
| <p style="text-align: center;">2938.2' 2942.0'</p> <p style="text-align: center;">2944.6' 2939.9'</p> <p style="text-align: center;"><u>DETAIL</u></p> <p style="text-align: right; margin-top: 20px;"><u>SEE DETAIL</u></p> | <h3 style="text-align: center;">OPERATOR CERTIFICATION</h3> <p style="text-align: center;"><i>I hereby certify the the information contained herein is true and complete to the best of my knowledge and belief.</i></p> <div style="border-bottom: 1px solid black; margin-bottom: 5px;"> </div> <p style="margin-bottom: 5px;">Signature</p> <div style="border-bottom: 1px solid black; margin-bottom: 5px;"> JAMES M.C. Ritchie, Jr. </div> <p style="margin-bottom: 5px;">Printed Name</p> <div style="border-bottom: 1px solid black; margin-bottom: 5px;"> AGENT </div> <p style="margin-bottom: 5px;">Title</p> <div style="border-bottom: 1px solid black; margin-bottom: 5px;"> 7-26-98 </div> <p style="margin-bottom: 5px;">Date</p> |
| <p style="text-align: center;">2938.2' 2942.0'</p> <p style="text-align: center;">2944.6' 2939.9'</p> <p style="text-align: center;"><u>DETAIL</u></p> <p style="text-align: right; margin-top: 20px;"><u>SEE DETAIL</u></p> | <h3 style="text-align: center;">SURVEYOR CERTIFICATION</h3> <p style="text-align: center;"><i>I hereby certify that the well location shown on this plat was plotted from field notes of actual surveys made by me or under my supervision, and that the same is true and correct to the best of my belief.</i></p> <p style="text-align: center; margin-top: 20px;">JULY 23, 1998</p> <p style="text-align: right; margin-top: 20px;">DMCC</p> |
| <div style="display: flex; justify-content: space-between; align-items: center;"> <div> <p>Date Surveyed</p> <p>Signature & Seal</p> <p>Professional Surveyor</p> </div> <div style="text-align: right;"> <p>72498</p> <p>98-11-1061</p> </div> </div> | |
| <div style="display: flex; justify-content: space-between; align-items: center;"> <div> <p>Certificate No. RONALD J. EIDSON</p> <p>12641</p> <p>12185</p> </div> <div style="text-align: right;"> <p>72498</p> <p>98-11-1061</p> </div> </div> | |

VICINITY MAP



SCALE: 1" = 2 MILES

SEC. 10 TWP. 24-S RGE. 29-E

SURVEY N.M.P.M.

COUNTY EDDY

DESCRIPTION 660' FSL & 2310' FWL

ELEVATION 2944

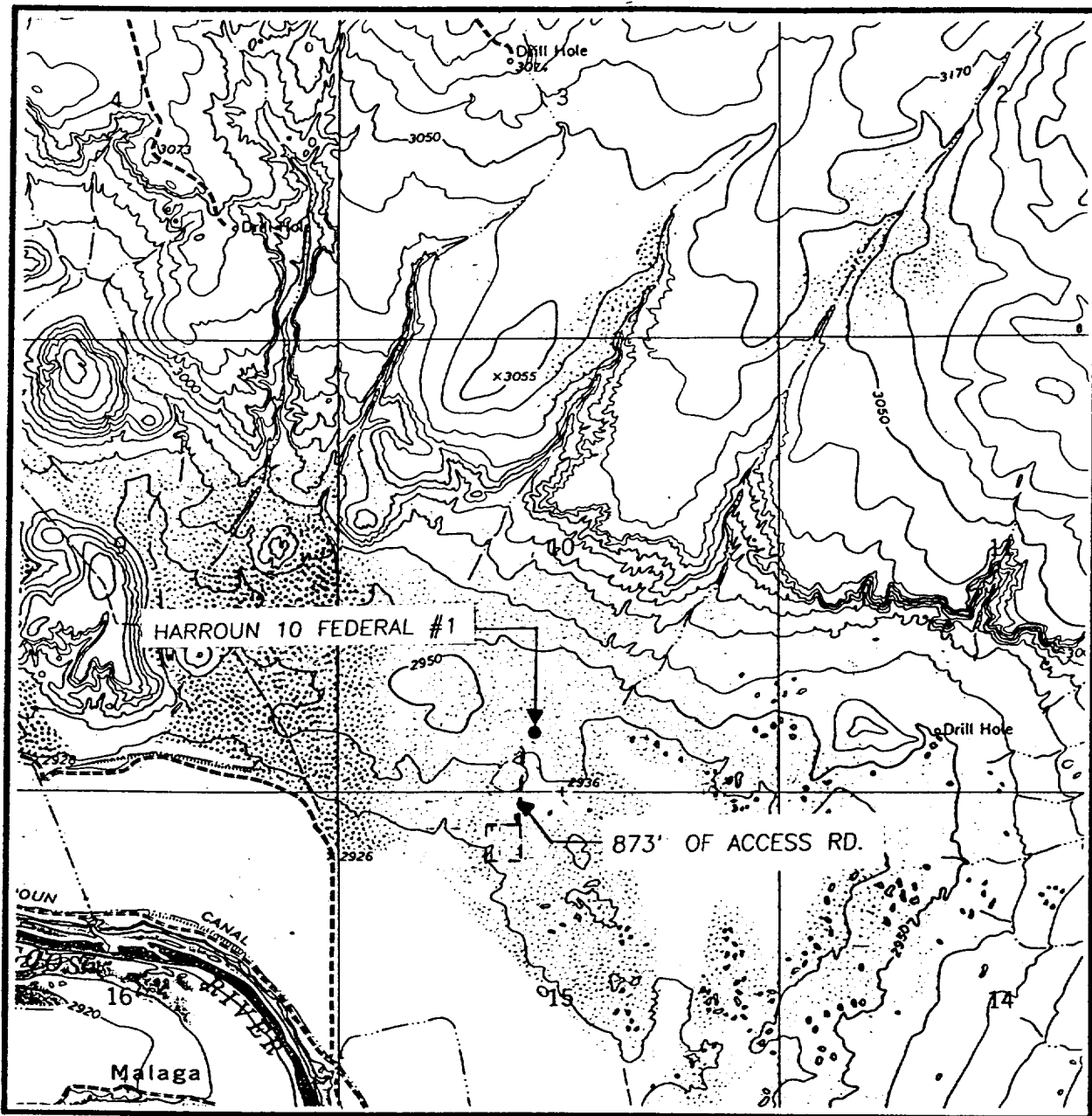
OPERATOR POGO PRODUCING COMPANY

LEASE HARROUN 10 FEDERAL

**JOHN WEST ENGINEERING
HOBBS, NEW MEXICO**

(505) 393-3117

LOCATION VERIFICATION MAP



SCALE: 1" = 2000'

CONTOUR INTERVAL:
PIERCE CANYON - 10'

SEC. 10 TWP. 24-S RGE. 29-E

SURVEY N.M.P.M.

COUNTY EDDY

DESCRIPTION 660' FSL & 2310' FWL

ELEVATION 2944

OPERATOR POGO PRODUCING COMPANY

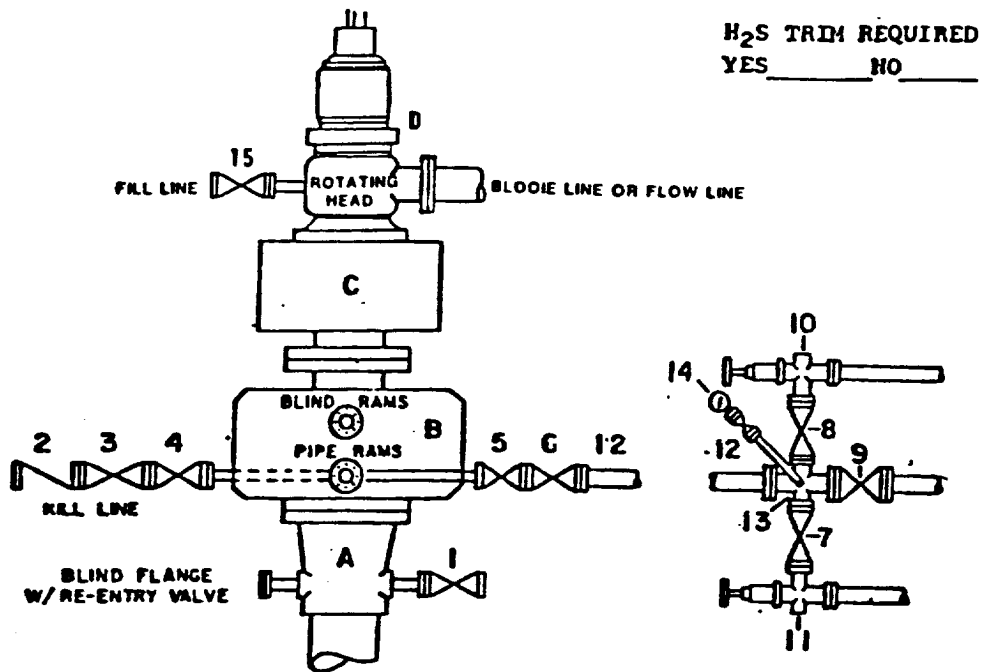
LEASE HARROUN 10 FEDERAL

U.S.G.S. TOPOGRAPHIC MAP

PIERCE CANYON, N.M.

JOHN WEST ENGINEERING
HOBBS, NEW MEXICO
(505) 393-3117

DRILLING CONTROL **CONDITION III-B 3000 PSI WP**



H₂S TRIM REQUIRED
 YES _____ NO _____

DRILLING CONTROL

MATERIAL LIST - CONDITION III - B

- | | |
|------------|--|
| A | Wellhead |
| B | 3000# W.P. Dual ram type preventer, hydraulic operated with 1" steel, 3000# W.P. control lines (where substructure height is adequate, 2 - 3000# W.P. single ram preventers may be utilized with 3000# W.P. drilling spool with 2" minimum flanged outlet for kill line and 3" minimum flanged outlet for choke line. The drilling spool is to be installed below the single ram type preventers). |
| C | 3000# W.P. Annular Preventer with 1" steel, 3000# W.P. control lines. |
| D | Rotating Head with fill up outlet and extended Bore line. |
| 1,3,4,7,8, | 2" minimum 3000# W.P. flanged full opening steel gate valve, or Halliburton Lo Torc Plug valve. |
| 2 | 2" minimum 3000# W.P. back pressure valve. |
| 5,6,9 | 3" minimum 3000# W.P. flanged full opening steel gate valve, or Halliburton Lo Torc Plug valve. |
| 12 | 3" minimum Schedule 80, Grade B, seamless line pipe. |
| 13 | 2" minimum x 3" minimum 3000# W.P. flanged cross. |
| 10,11 | 2" minimum 3000# W.P. adjustable choke bodies. |
| 14 | Cameron Mud Gauge or equivalent (location optional in Choke line). |
| 15 | 2" minimum 3000# W.P. flanged or threaded full opening steel gate valve, or Halliburton Lo Torc Plug valve. |

| | | | |
|-------------|------|---------|--------|
| SCALE | DATE | EST. NO | DWG NO |
| DRAWN BY | | | |
| CHECKED BY | | | |
| APPROVED BY | | | |

EXHIBIT E