

District I
PO Box 1980, Hobbs, NM 88241-1980
District II
311 S. 1st Street, Artesia, NM 88210-2834
District III
1000 Rio Brazos Rd., Aztec, NM 87410
District IV
2040 South Pacheco, Santa Fe, NM 87505

State of New Mexico
Energy, Minerals & Natural Resources Department

OIL CONSERVATION DIVISION
2040 South Pacheco
Santa Fe, NM 87505

Form C-101
Revised October 18, 1994

Instructions on back
Submit to Appropriate District Office
State Lease - 6 Copies
Fee Lease - 5 Copies

☐ AMENDED REPORT

APPLICATION FOR PERMIT TO DRILL, RE-ENTER, DEEPEN, PLUGBACK, OR ADD A ZONE

¹ Operator name and Address ARCO PERMIAN P.O. BOX 1610		² OGRID Number 000990
⁴ Property Code 20761	⁵ Property Name BARCLAY STATE	³ APN Number 30-015-30809 30-015-39902
		⁶ Well No. 7

⁷ Surface Location

UL or lot no.	Section	Township	Range	Lot. Idn	Feet from the	North/South Line	Feet from the	East/West line	County
P	2	23S	31E		660	SOUTH	660	EAST	EDDY

⁸ Proposed Bottom Hole Location If Different From Surface

UL or lot no.	Section	Township	Range	Lot. Idn	Feet from the	North/South Line	Feet from the	East/West line	County

⁹ Proposed Pool 1

LIVINGSTON RIDGE SOUTH (DELAWARE) 96149

¹⁰ Proposed Pool 2

¹¹ Work Type Code N	¹² Well Type Code O	¹³ Cable/Rotary R	¹⁴ Lease Type Code S	¹⁵ Ground Level Elevation 3454
¹⁶ Multiple NO	¹⁷ Proposed Depth 8600	¹⁸ Formation DELAWARE	¹⁹ Contractor FWA/PETERSON	²⁰ Spud Date 11/99

18 Hours WOC

²¹ Proposed Casing and Cement Program

Hole Size	Casing Size	Casing weight/foot	Setting Depth	Sacks of Cement	Estimated TOC
17 1/2	13 3/8	48	860	775	SURF
12-1/4	8 5/8	32	4600	1800	SURF
7 7/8	5 1/2	15.5/17	8600	860	4500

²² Describe the proposed program. If this application is to DEEPEN or PLUG BACK give the data on the present productive zone and proposed new productive zone. Describe the blowout prevention program, if any. Use additional sheets if necessary.

Subject well planned as a 8600' straight hole.
3000 psi BOPE will be used from 860' to TD.

Notify N.M.U.C.C. in sufficient
time to witness cementing
the 13 3/8" & 8 5/8" casing

Post ID-1
11-5-99
API & WOC

²³ I hereby certify that the information given above is true and complete to the best of my knowledge and belief.

Signature: Laurie Cherry
Printed name: LAURIE CHERRY

Title: 10/13/99

OIL CONSERVATION DIVISION

Approved by: [Signature]
Title: District Supervisor

Approval Date: 11-1-99 Expiration Date: 11-1-00

DISTRICT I
P.O. Box 1980, Hobbs, NM 88241-1980

State of New Mexico

Energy, Minerals and Natural Resources Department

Form C-102
Revised February 10, 1994
Submit to Appropriate District Office
State Lease - 4 Copies
Fee Lease - 3 Copies

DISTRICT II
P.O. Drawer DD, Artesia, NM 88211-0719

DISTRICT III
1000 Rio Brazos Ed., Aztec, NM 87410

DISTRICT IV
P.O. Box 2088, Santa Fe, NM 87504-2088

OIL CONSERVATION DIVISION

P.O. Box 2088
Santa Fe, New Mexico 87504-2088

☐ AMENDED REPORT

WELL LOCATION AND ACREAGE DEDICATION PLAT

API Number 30-015-29925	Pool Code 96149	Pool Name LIVINGSTON RIDGE SOUTH (DELAWARE)
Property Code 20761	Property Name BARCLAY STATE	Well Number 7
OGRID No. 000990	Operator Name ARCO PERMIAN	Elevation 3454

Surface Location

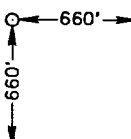
UL or lot No. P	Section 2	Township 23 S	Range 31 E	Lot Idn	Feet from the 660	North/South line SOUTH	Feet from the 660	East/West line EAST	County EDDY
--------------------	--------------	------------------	---------------	---------	----------------------	---------------------------	----------------------	------------------------	----------------

Bottom Hole Location If Different From Surface

UL or lot No.	Section	Township	Range	Lot Idn	Feet from the	North/South line	Feet from the	East/West line	County
---------------	---------	----------	-------	---------	---------------	------------------	---------------	----------------	--------

Dedicated Acres 40	Joint or Infill	Consolidation Code	Order No.
-----------------------	-----------------	--------------------	-----------

NO ALLOWABLE WILL BE ASSIGNED TO THIS COMPLETION UNTIL ALL INTERESTS HAVE BEEN CONSOLIDATED
OR A NON-STANDARD UNIT HAS BEEN APPROVED BY THE DIVISION

LOT 4 39.49 AC.	LOT 3 39.64 AC.	LOT 2 39.78 AC.	LOT 1 39.95 AC.
			

OPERATOR CERTIFICATION

I hereby certify the the information contained herein is true and complete to the best of my knowledge and belief.

Laurie Cherry
Signature
LAURIE CHERRY
Printed Name
REG/COMP. ASST.
Title
10-13-99
Date

SURVEYOR CERTIFICATION

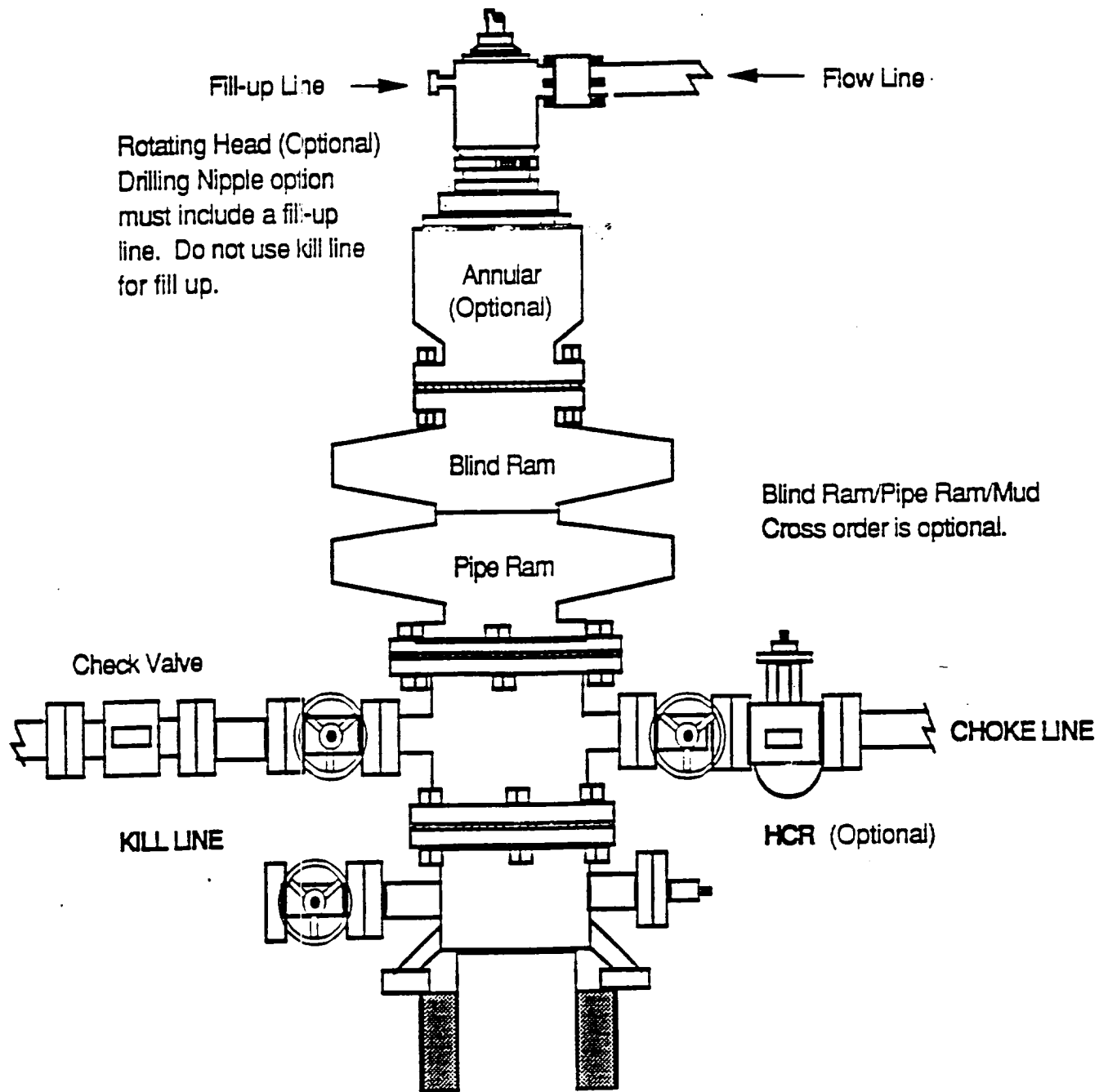
I hereby certify that the well location shown on this plat was plotted from field notes of actual surveys made by me or under my supervision, and that the same is true and correct to the best of my belief.

OCTOBER 21, 1997
Date Surveyed JLP

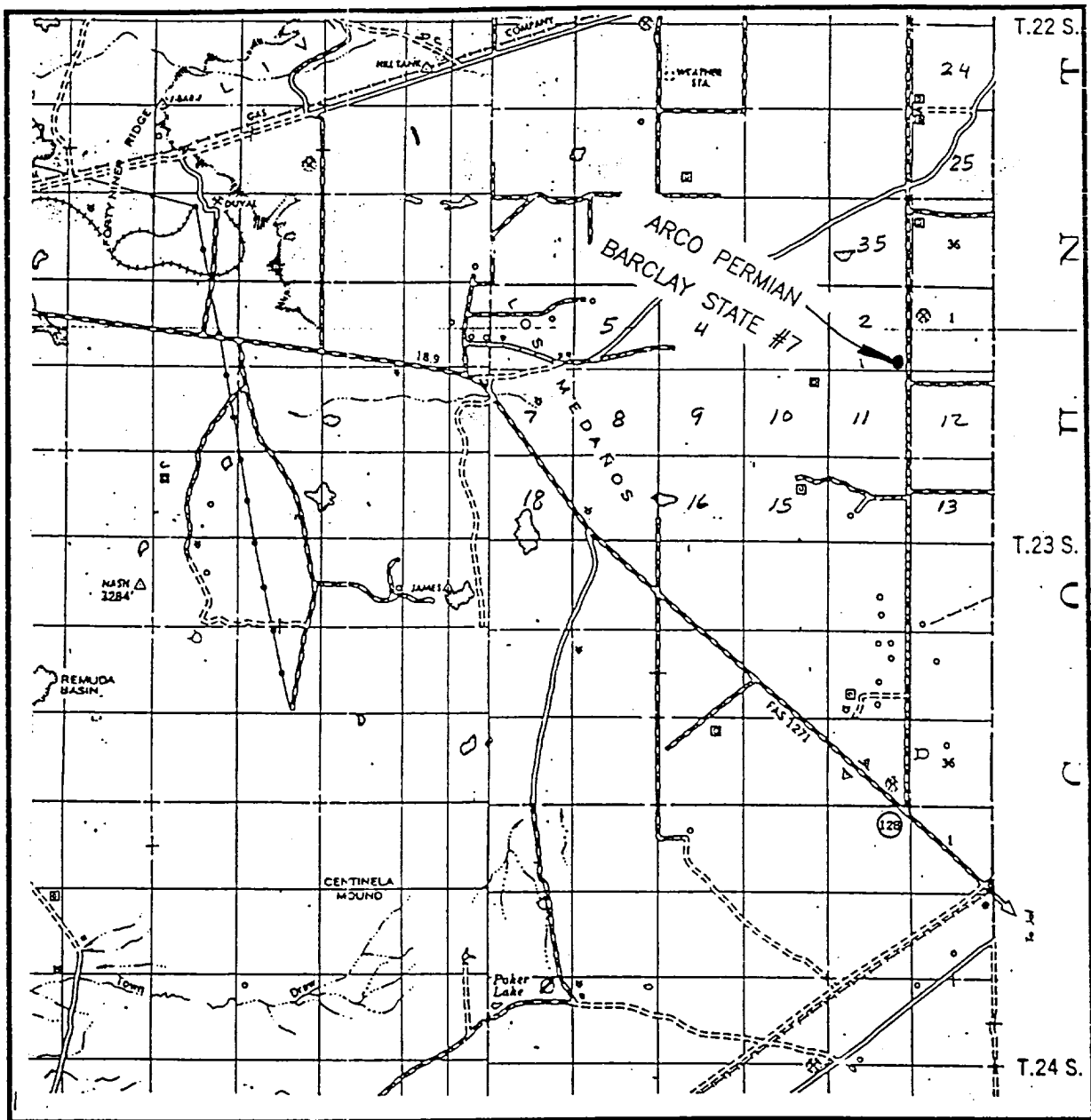
Ronald J. Eidson
Signature & Seal of Professional Surveyor
W.O. Num 97-151697
Certificate No. RONALD J. EIDSON, 3239
SARAH EIDSON, 12641
MAGNUS McDONALD, 12185

#7

DRILLING OPERATIONS
CLASS - 1: NORMAL PRESSURE < 10 PPG
OPTION - 1: ARCO STANDARD BOPE STACK



VICINITY MAP

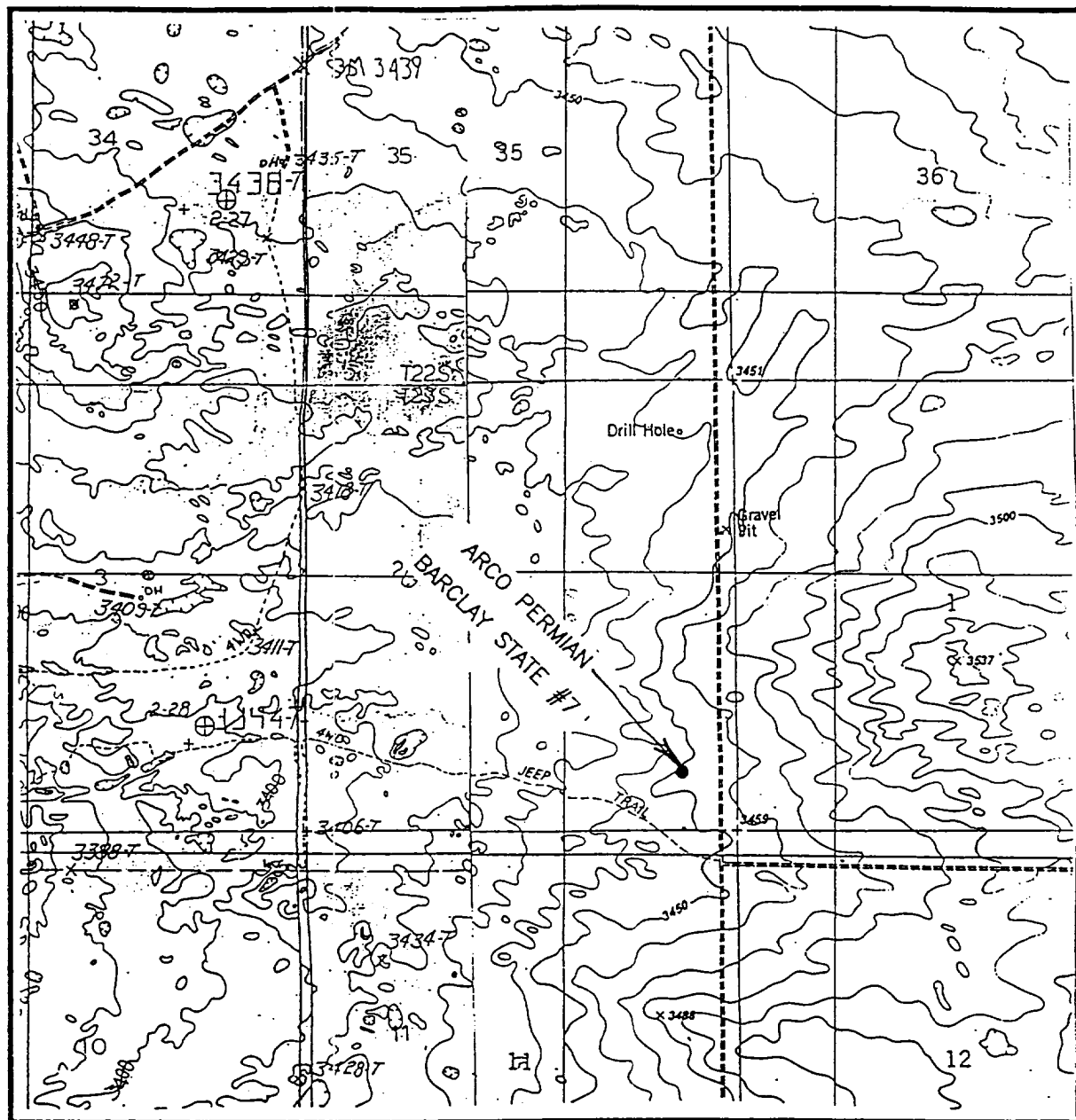


SCALE: 1" = 2 MILES

SEC. 2 TWP. 23-S RGE. 3-E
 SURVEY N.M.P.M.
 COUNTY EDDY
 DESCRIPTION 660' FSL & 660' FEL
 ELEVATION 3454'
 OPERATOR ARCO PERMIAN
 LEASE BARCLAY FEDERAL

JOHN WEST ENGINEERING
HOBBS, NEW MEXICO
(505) 393-3117

LOCATION VERIFICATION MAP



SCALE: 1" = 2000'

CONTOUR INTERVAL - 10'

SEC. 2 TWP. 23-S RGE. 31-E

SURVEY N.M.P.M.

COUNTY EDDY

DESCRIPTION 660' FSL & 660' FEL

ELEVATION 3454'

OPERATOR ARCO PERMIAN

LEASE BARCLAY FEDERAL

U.S.G.S. TOPOGRAPHIC MAP

BOOTLEG RIDGE, & LOS MEDANOS, N.M.

JOHN WEST ENGINEERING
HOBBS, NEW MEXICO
(505) 393-3117