

District I
1625 N. French Dr., Hobbs, NM 88240
District II
811 South First, Artesia, NM 88210
District III
1000 Rio Brazos Road, Aztec, NM 87410
District IV
2040 South Pacheco, Santa Fe, NM 87505

State of New Mexico
Energy Minerals and Natural Resources

Oil Conservation Division
2040 South Pacheco
Santa Fe, NM 87505

Form C-101
Revised March 17, 1999

Submit to appropriate District Office
State Lease - 6 Copies
Fee Lease - 5 Copies

AMENDED REPORT

APPLICATION FOR PERMIT TO DRILL, RE-ENTER, DEEPEN, PLUGBACK, OR ADD A ZONE

Operator Name and Address POGO PRODUCING COMPANY P.O. BOX 10340 MIDLAND, TEXAS 79702-4345		CORID Number 17891
Property Code 19128	Property Name COYOTE 21	API Number 30- 015-31439
		Well No. 4

Surface Location

UL or lot no. "L"	Section 21	Township 24S	Range 29E	Lot Idn	Feet from the 1650'	North/South line SOUTH	Feet from the 1300'	East/West line WEST	County EDDY
----------------------	---------------	-----------------	--------------	---------	------------------------	---------------------------	------------------------	------------------------	----------------

Proposed Bottom Hole Location If Different From Surface

UL or lot no.	Section	Township	Range	Lot Idn	Feet from the	North/South line	Feet from the	East/West line	County
---------------	---------	----------	-------	---------	---------------	------------------	---------------	----------------	--------

Proposed Pool 1 CEDAR CANYON-DELAWARE (11540)	Proposed Pool 2
--	-----------------

Work Type Code N	Well Type Code O	Cable/Rotary ROTARY	Lease Type Code P	Ground Level Elevation 2938'
Multiple NO	Proposed Depth 5500'	Formation DELAWARE	Contractor	Spud Date WHEN APPROVED

Minimum WOC time 18 hrs Proposed Casing and Cement Program

Hole Size	Casing Size	Casing weight/foot	Setting Depth	Sacks of Cement	Estimated TOC
25"	20"	NA	40'	Redi-mix	surface
14 3/4"	10 3/4"	32.75	550'	500 Sx.	surface
7 7/8"	5 1/2"	15.5	5500'	1000 Sx.	surface

Describe the proposed program. If this application is to DEEPEN or PLUG BACK, give the data on the present productive zone and proposed new productive zone.
Describe the blowout prevention program, if any. Use additional sheets if necessary.

1. Drill 25" hole to 40'. Set 40' of 20" conductor pipe and cement to surface with Redi-mix.
2. Drill 14 3/4" hole to 550'. Run and set 550' of 10 3/4" 32.75# H-40 ST&C casing. Cement with 500 Sx. of Class "C" cement + additives, circulate cement to surface.
3. Drill 7 7/8" hole to 5500'. Run and set 5500' of 5 1/2" 15.5# J-55 ST&C casing. Cement with 1000 Sx. of Class "H" cement + additives, bring cement back to surface or at least 250' into 10 3/4" surface casing.

NSL-4524

I hereby certify that the information given above is true and complete to the best of my knowledge and belief.

Signature: Joe T. Jarica

Printed name: Joe T. Jarica

Title: Agent

Date: 11/01/00

Phone: 505-391-8503

OIL CONSERVATION DIVISION

Approved by: ORIGINAL SIGNED BY TIM W. GUM
DISTRICT II SUPERVISOR

Title:

Approval Date: NOV 09 2000 Expiration Date: NOV 09 2001

Conditions of Approval:

Attachment ☐

DISTRICT I
P.O. Box 1980, Hobbs, NM 88241-1980

DISTRICT II
P.O. Drawer DD, Artesia, NM 88211-0719

DISTRICT III
1000 Rio Brazos Rd., Aztec, NM 87410

DISTRICT IV
P.O. Box 2088, Santa Fe, NM 87504-2088

State of New Mexico
Energy, Minerals and Natural Resources Department

Form C-102
Revised February 10, 1994
Submit to Appropriate District Office
State Lease - 4 Copies
Fee Lease - 3 Copies

OIL CONSERVATION DIVISION

P.O. Box 2088
Santa Fe, New Mexico 87504-2088

☐ AMENDED REPORT

WELL LOCATION AND ACREAGE DEDICATION PLAT

API Number	Pool Code 11540	Pool Name CEDAR CANYON - DELAWARE
Property Code 19128	Property Name COYOTE "21"	Well Number 4
OGRID No. 17891	Operator Name POGO PRODUCING COMPANY	Elevation 2938

Surface Location

UL or lot No.	Section	Township	Range	Lot Idn	Feet from the	North/South line	Feet from the	East/West line	County
L	21	24 S	29 E		1650	SOUTH	1300	WEST	EDDY

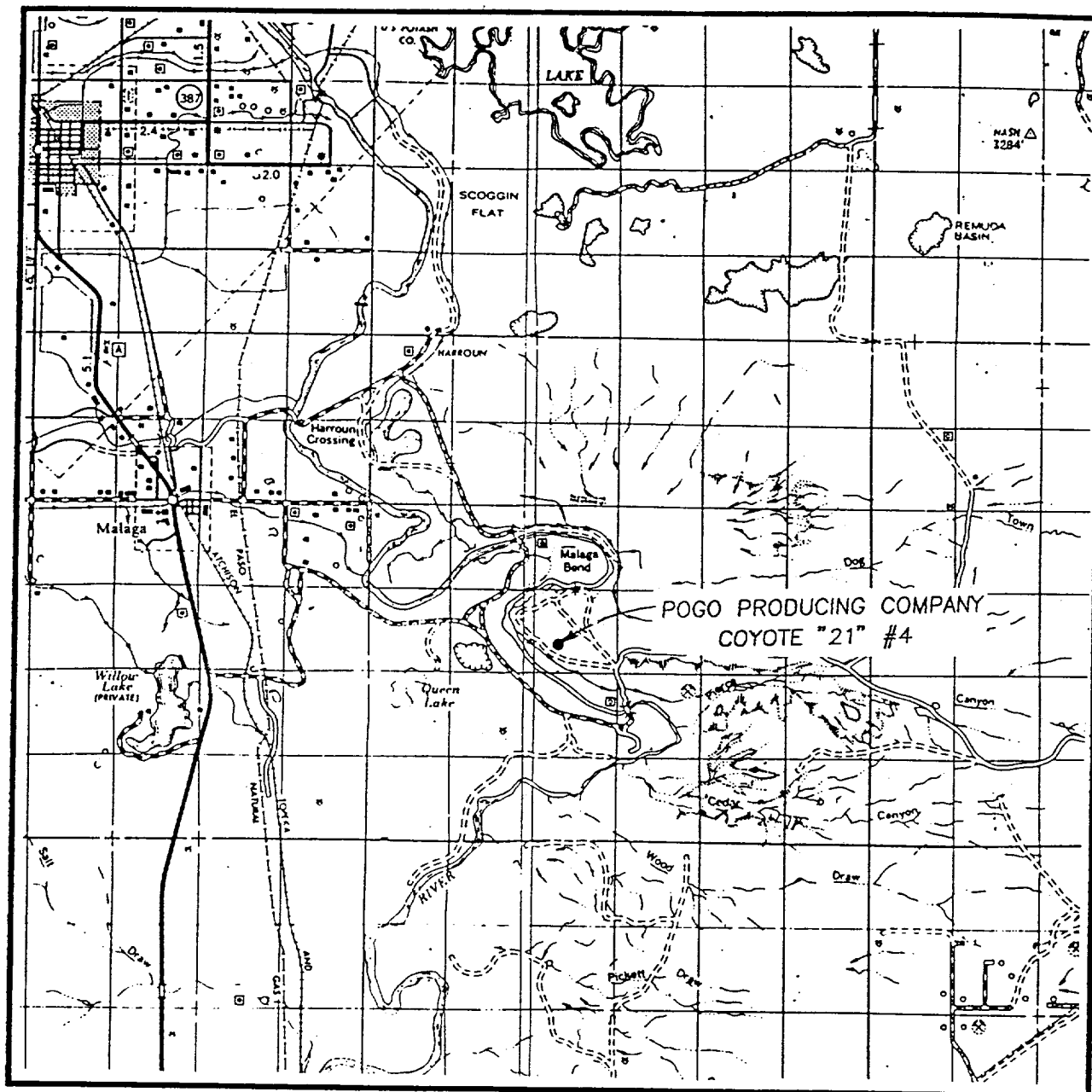
Bottom Hole Location If Different From Surface

UL or lot No.	Section	Township	Range	Lot Idn	Feet from the	North/South line	Feet from the	East/West line	County
Dedicated Acres 40	Joint or Infill	Consolidation Code	Order No.						

NO ALLOWABLE WILL BE ASSIGNED TO THIS COMPLETION UNTIL ALL INTERESTS HAVE BEEN CONSOLIDATED
OR A NON-STANDARD UNIT HAS BEEN APPROVED BY THE DIVISION

	OPERATOR CERTIFICATION I hereby certify the the information contained herein is true and complete to the best of my knowledge and belief. Signature Joe T. Janica Printed Name Agent Title 11/01/00 Date	
	SURVEYOR CERTIFICATION I hereby certify that the well location shown on this plat was plotted from field notes of actual surveys made by me or under my supervision, and that the same is true and correct to the best of my belief. OCTOBER 31, 2000 Date Surveyed JLP Signature & Seal of Professional Surveyor W.O. Num. 00-11-1361 Certificate No. RONALD J. EDSON, 3239 GARY C. EDSON, 12841	

VICINITY MAP



SCALE: 1" = 2 MILES

SEC. 21 TWP. 24-S RGE. 29-E

SURVEY N.M.P.M.

COUNTY EDDY

DESCRIPTION 1650' FSL & 1300' FWL

ELEVATION 2938

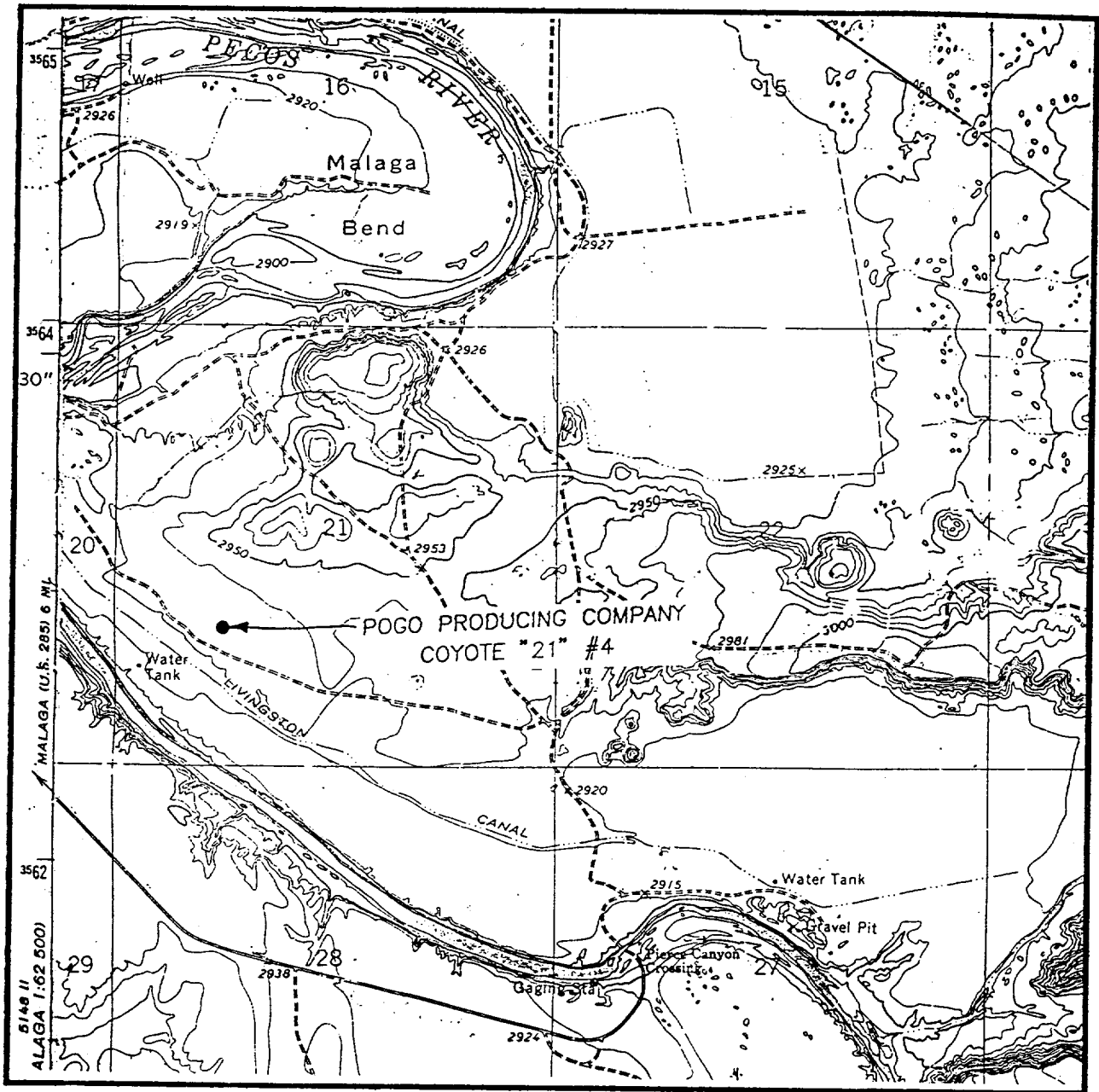
OPERATOR POGO PRODUCING COMPANY

LEASE COYOTE "21"

**JOHN WEST SURVEYING
HOBBS, NEW MEXICO**

(505) 393-3117

LOCATION VERIFICATION MAP



SCALE: 1" = 2000'

CONTOUR INTERVAL - 10'

SEC. 21 TWP. 24-S RGE. 29-E

SURVEY N.M.P.M.

COUNTY EDDY

DESCRIPTION 1650' FSL & 1300' FWL

ELEVATION 2938

OPERATOR POGO PRODUCING COMPANY

LEASE COYOTE #21

U.S.G.S. TOPOGRAPHIC MAP

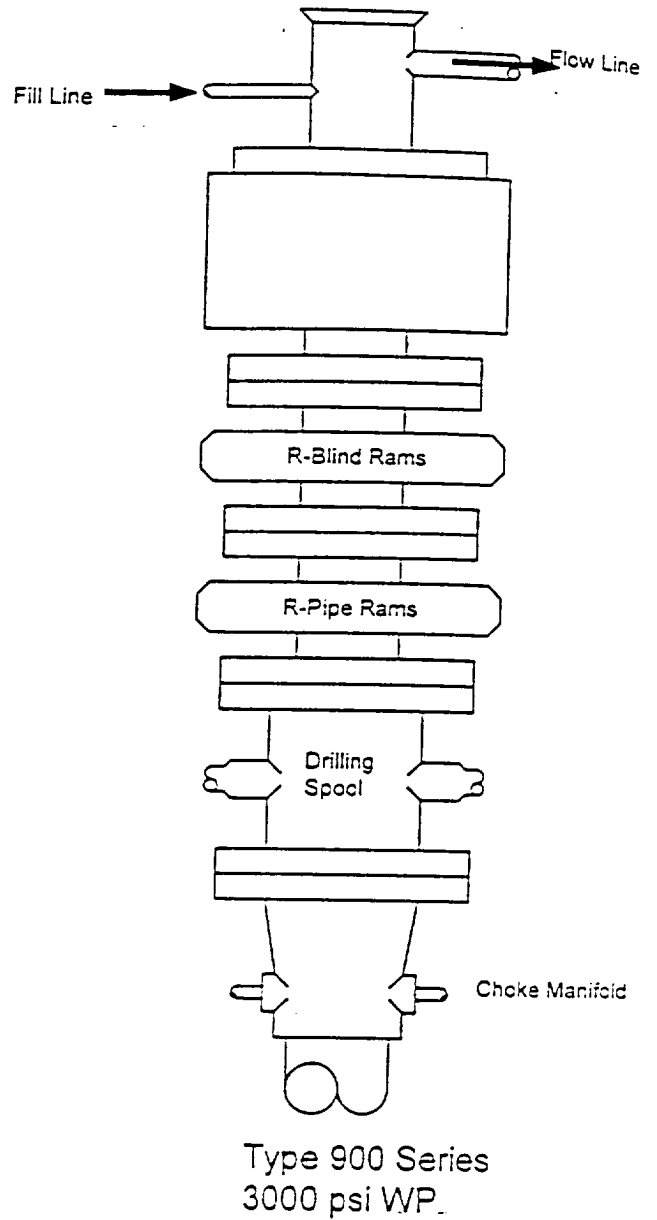
PIERCE CANYON, N.M.

JOHN WEST SURVEYING

HOBBS, NEW MEXICO

(505) 393-3117

BLOWOUT PREVENTER SYSTEM



Choke Manifold Assembly for 3M WP System

