

UNITED STATES
DEPARTMENT OF THE INTERIOR
GEOLOGICAL SURVEYRECEIVED
(Other instructions on
reverse side)

JAN 22 1985

Form approved.
Budget Bureau No. 42-R1425.

30-015-01159

5. LEASE DESIGNATION AND SERIAL NO.

NM-38459

6. IF INDIAN, ALLOTTEE OR TRIBE NAME

7. UNIT AGREEMENT NAME

8. FARM OR LEASE NAME

Welch "ABV" Federal

9. WELL NO.

1

10. FIELD AND POOL, OR WILDCAT

Wildcat - Bone Springs

11. SEC., T., R., M., OR BLK.
AND SURVEY OR AREA

Sec. 21-T26S-R27E

12. COUNTY OR PARISH 13. STATE

Eddy

NM

1a. TYPE OF WORK

DRILL ☒DEEPEN ☐PLUG BACK ☐

b. TYPE OF WELL

OIL
WELL ☒GAS
WELL ☐

RE-ENTRY

OTHER

SINGLE
ZONE ☐MULTIPLE
ZONE ☐

2. NAME OF OPERATOR

Yates Petroleum Corporation

3. ADDRESS OF OPERATOR

207 South Fourth Street, Artesia, New Mexico 88210

4. LOCATION OF WELL (Report location clearly and in accordance with any State requirements.)*

At surface

660' FNL and 760' FWL

At proposed prod. zone

14. DISTANCE IN MILES AND DIRECTION FROM NEAREST TOWN OR POST OFFICE*

Approximately 23 miles SW of Malaga, New Mexico

15. DISTANCE FROM PROPOSED*

LOCATION TO NEAREST

PROPERTY OR LEASE LINE, FT.

(Also to nearest drlg. unit line, if any)

16. NO. OF ACRES IN LEASE

320

17. NO. OF ACRES ASSIGNED
TO THIS WELL

40

18. DISTANCE FROM PROPOSED LOCATION*

TO NEAREST WELL, DRILLING, COMPLETED,
OR APPLIED FOR, ON THIS LEASE, FT.

19. PROPOSED DEPTH

8945'

20. ROTARY OR CABLE TOOLS

Reverse Unit

21. ELEVATIONS (Show whether DF, RT, GR, etc.)

3235' GL

22. APPROX. DATE WORK WILL START*

ASAP

23. PROPOSED CASING AND CEMENTING PROGRAM

SIZE OF HOLE	SIZE OF CASING	WEIGHT PER FOOT	SETTING DEPTH	QUANTITY OF CEMENT
17 3/4	13 3/8	54.5#J-55	630 sx	in place
12 1/4	9 5/8	40.0#S-95	5694 sx	in place
7 7/8	7"	32.0#S-95	12,614 sx	in place

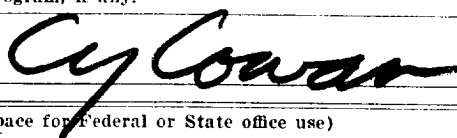
This well was originally drilled by El Paso Natural Gas Company 5/5/57, as the #1-X Welch Unit to total depth of 13,348'. Plugged back to 12,490'. This well was P&A'ed 12/13/63.

We propose to drill out plug @ 4220'. Clean out hole to CIBP at 11,200' cement behind 7" production casing as necessary. Selectively perforated and stimulated Bone Springs formation to obtain production.

IN ABOVE SPACE DESCRIBE PROPOSED PROGRAM: If proposal is to deepen or plug back, give data on present productive zone and proposed new productive zone. If proposal is to drill or deepen directionally, give pertinent data on subsurface locations and measured and true vertical depths. Give blowout preventer program, if any.

24.

SIGNED



TITLE

Regulatory Agent

DATE

1/18/85

(This space for Federal or State office use)

PERMIT NO.

APPROVAL DATE

APPROVED BY

TITLE

DATE

1-21-85

CONDITIONS OF APPROVAL, IF ANY:

APPROVAL SUBJECT
GENERAL REQUIREMENTS AND
SPECIAL STIPULATIONS
ATTACHED

OIL CONSERVATION DIVISION

STATE OF NEW MEXICO

P. O. BOX 2088

Form C-102
Revised 10-1-78

ENERGY AND MINERALS DEPARTMENT

SANTA FE, NEW MEXICO 87501

All distances must be from the outer boundaries of the Section.

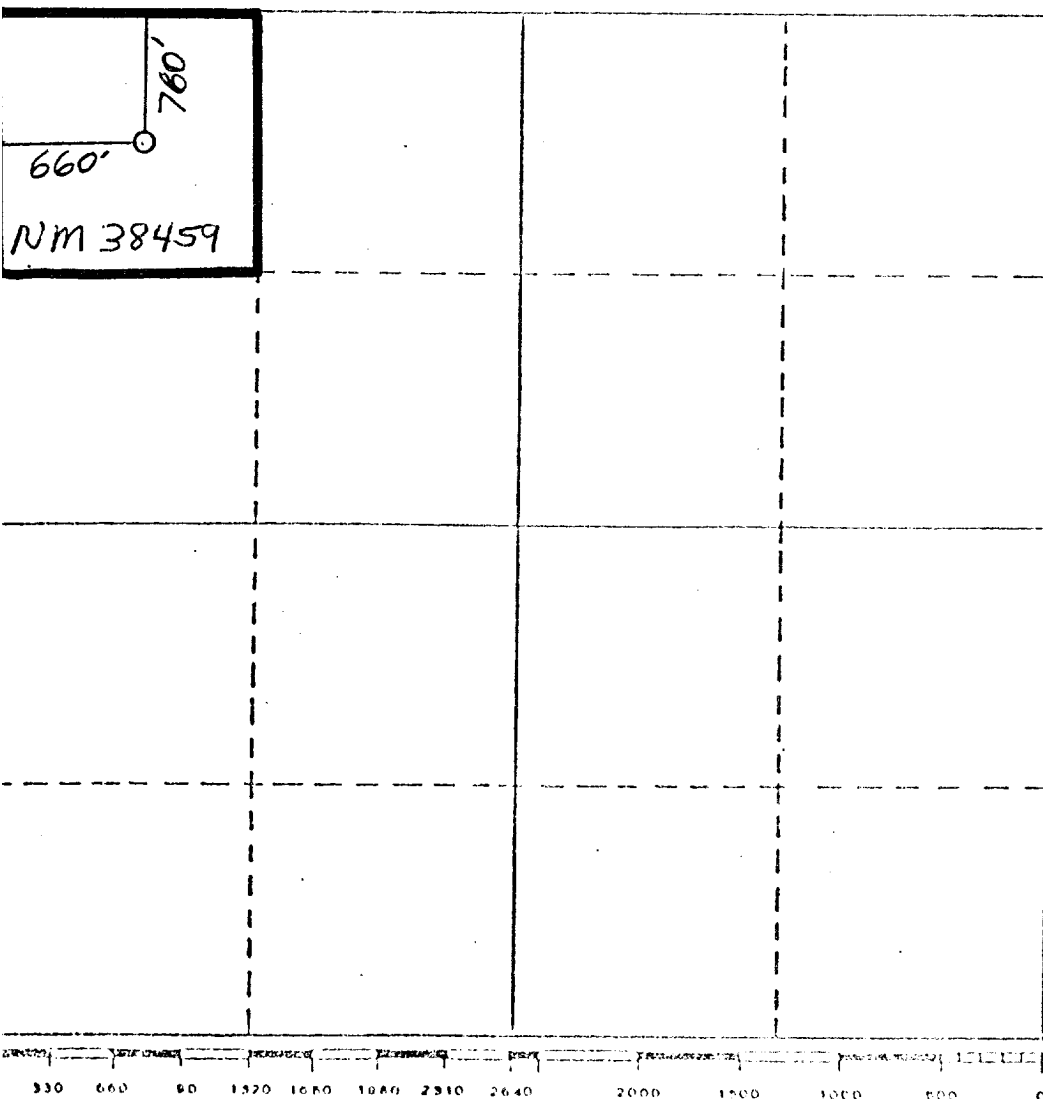
Operator Yates Petroleum Corporation			Lease Welch "ABV" Fed		Well No. 1
Unit Letter D	Section 21	Township 26S	Range 27E	County Eddy	
Actual Footage Location of Well: 660' North 760' West					
Ground Level Elev. 3235' GL	Producing Formation Deleware	Pool Wildcat		Dedicated Acreage: 40 Acres	

- Outline the acreage dedicated to the subject well by colored pencil or hachure marks on the plat below.
- If more than one lease is dedicated to the well, outline each and identify the ownership thereof (both as to working interest and royalty).
- If more than one lease of different ownership is dedicated to the well, have the interests of all owners been consolidated by communitization, unitization, force-pooling, etc?

☐ Yes ☐ No If answer is "yes," type of consolidation _____

If answer is "no," list the owners and tract descriptions which have actually been consolidated. (Use reverse side of this form if necessary.) _____

No allowable will be assigned to the well until all interests have been consolidated (by communitization, unitization, forced-pooling, or otherwise) or until a non-standard unit, eliminating such interests, has been approved by the Division.



CERTIFICATION

I hereby certify that the information contained herein is true and complete to the best of my knowledge and belief.

Cy Cowan

Name

Cy Cowan

Position

Regulatory Agent

Company

Yates Petroleum Corporation

Date

January 10, 1985

I hereby certify that the well location shown on this plat was plotted from field notes of actual surveys made by me or under my supervision, and that the same is true and correct to the best of my knowledge and belief.

Date Surveyed

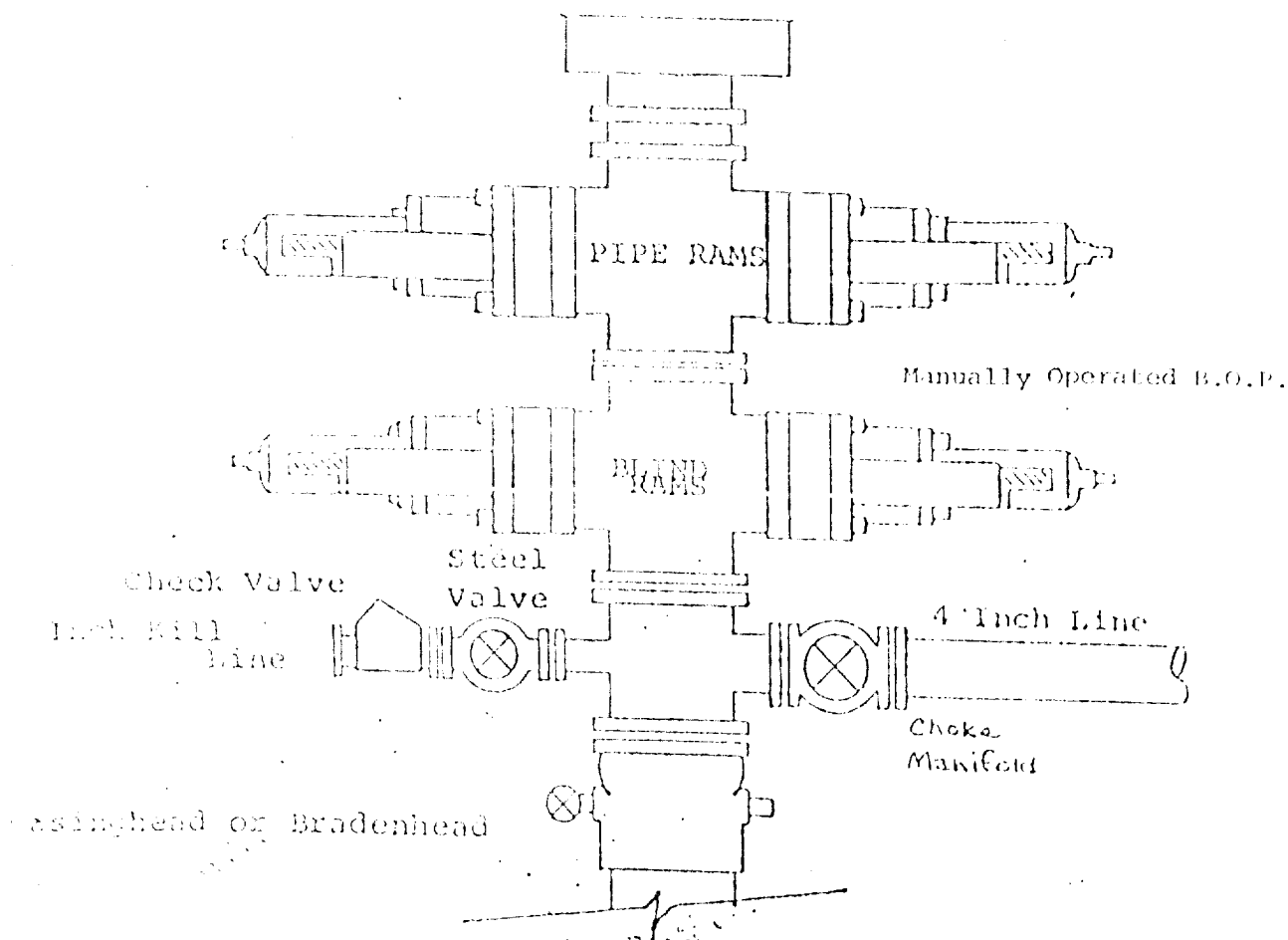
~~refer to original plat~~
Registered Professional Engineer
and/or Land Surveyor

Certificate No.

EXHIBIT B

BDP DIAGRAM

RATED 3000[#]



YATES PETROLEUM CORPORATION
Welch "ABV" Federal #1
660' FNL and 760' FWL
Section 21, T26S-R27E
Eddy County, NM
Re-entry

In conjunction with Form 9-331C, Application for Permit to Drill subject well, Yates Petroleum Company submits the following ten items of pertinent information in accordance with BLM requirements.

1. The geologic surface formation is Alluvial.
2. The estimated tops of geologic markers are as follows:

Top Salt	1293
Base Salt	1864
Deleware Limestone	2047
Deleware Sandstone	2080
Bone Springs	5665
Wolfcamp	8945
Top of Penn	11200
Atoka	12296

3. The estimated depths at which anticipated water, oil or gas formations are expected to be encountered:

Water: 250-300'

Oil or Gas: 4500'

4. Proposed Casing Program: See Form 9-331C.
5. Pressure Control Equipment: See Form 9-331C.
6. Mud Program: See Form 9-331C.
7. Auxiliary Equipment: Kelly Cock; pit level indicators and flow sensor equipment; sub with full-opening valve on floor, drill pipe connection.
8. Testing, Logging and Coring Program:

Samples:	As warranted
DST's:	As warranted
Coring:	None
Logging:	CNL-FDC w/GR CNL to surface
9. No abnormal pressures or temperatures are anticipated.
10. Anticipated starting date: As soon as possible after approval.

