

UNITED STATES
DEPARTMENT OF THE INTERIOR
GEOLOGICAL SURVEY

APPLICATION FOR PERMIT TO DRILL, DEEPEN, OR PLUG BACK

1a. TYPE OF WORK
DRILL ☒ DEEPEN ☐ PLUG BACK ☐

b. TYPE OF WELL
OIL WELL ☐ GAS WELL ☒ OTHER ☐ SINGLE ZONE ☐ MULTIPLE ZONE ☐

2. NAME OF OPERATOR
J.M. Huber Corporation

3. ADDRESS OF OPERATOR
1900 Wilco Building, Midland, Texas 79701

4. LOCATION OF WELL (Report location clearly and in accordance with any State requirements.)
At surface: 1980' FNL & 660' East of the N 01 1/4 Line, Section 14, T-26-S, R-24-E, Eddy County, New Mexico
At proposed prod. zone:

14. DISTANCE IN MILES AND DIRECTION FROM NEAREST TOWN OR POST OFFICE*
10 miles south of White City, New Mexico

15. DISTANCE FROM PROPOSED* LOCATION TO NEAREST PROPERTY OR LEASE LINE, FT.
(Also to nearest drlg. unit line, if any)
660'

18. DISTANCE FROM PROPOSED LOCATION* TO NEAREST WELL, DRILLING, COMPLETED, OR APPLIED FOR, ON THIS LEASE, FT.
None

21. ELEVATIONS (Show whether DF, RT, GR, etc.)
3827' GR

5. LEASE DESIGNATION AND SERIAL NO.

NM-4022

6. IF INDIAN, ALLOTTEE OR TRIBE NAME

7. UNIT AGREEMENT NAME

8. FARM OR LEASE NAME

Western - USA

9. WELL NO.

1

10. FIELD AND POOL, OR WILDCAT

Washington Ranch MORLEY

11. SEC., T., R., M., OR BLK. AND SURVEY OR AREA

14-26S-24E

12. COUNTY OR PARISH

Eddy

13. STATE

New Mexico

16. NO. OF ACRES IN LEASE 2201.48

17. NO. OF ACRES ASSIGNED TO THIS WELL 320

19. PROPOSED DEPTH 7,800'

20. ROTARY OR CABLE TOOLS Rotary

22. APPROX. DATE WORK WILL START

July 27, 1972

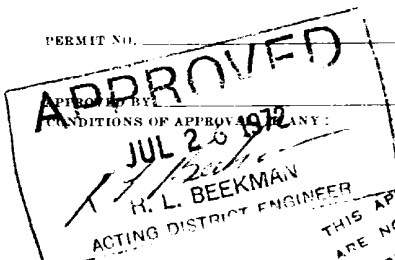
23. PROPOSED CASING AND CEMENTING PROGRAM

SIZE OF HOLE	SIZE OF CASING	WEIGHT PER FOOT	SETTING DEPTH	QUANTITY OF CEMENT
11"	8-5/8	24#	300	300 SX
7-7/8"	4-1/2	10.5#	7,800	380 SX

IN ABOVE SPACE DESCRIBE PROPOSED PROGRAM: If proposal is to deepen or plug back, give data on present productive zone and proposed new productive zone. If proposal is to drill or deepen directionally, give pertinent data on subsurface locations and measured and true vertical depths. Give blowout preventer program, if any.

24. SIGNED James R. Sutherland TITLE District Prod. Supt. DATE July 17, 1972
(This space for Federal or State office use)

PERMIT NO.



THIS APPROVAL IS RESCINDED IF OPERATIONS ARE NOT COMMENCED WITHIN 3 MONTHS.
OCT 26 1972

DECLARED WATER BASIN
CEMENT BEHIND THE CASING MUST BE CIRCULATED

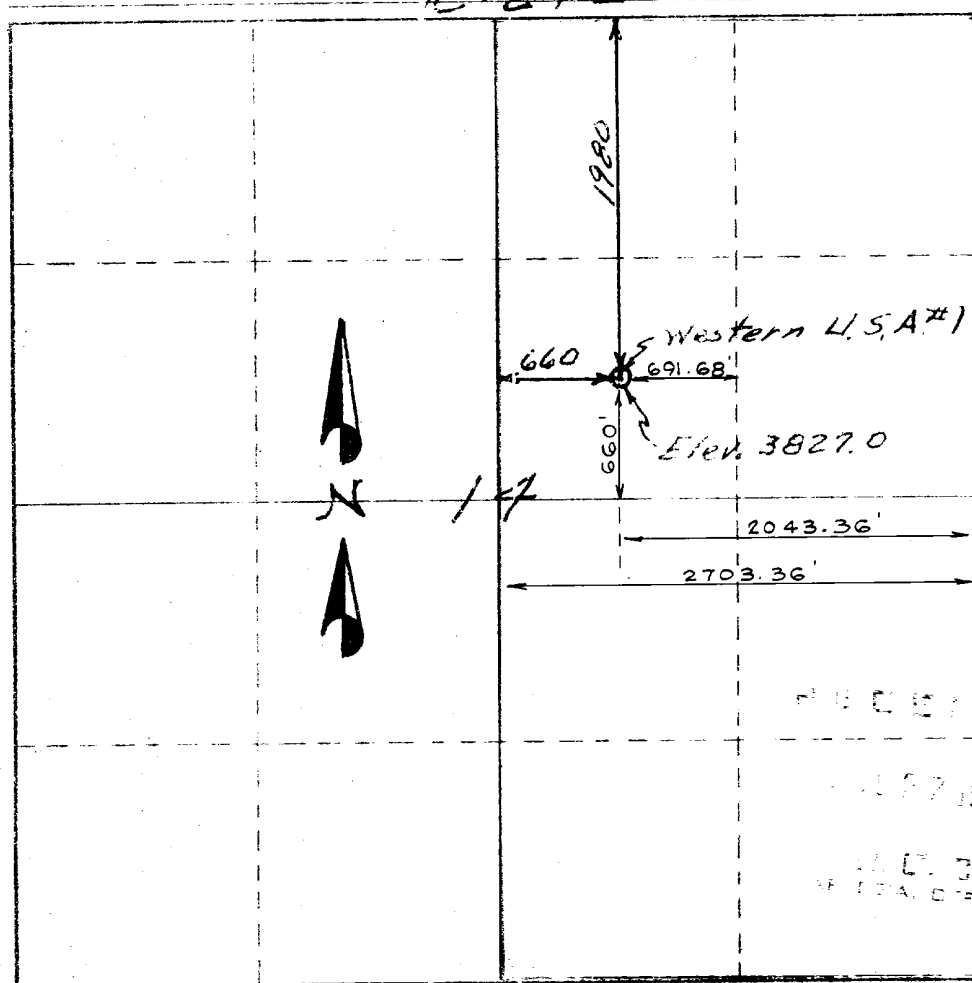
RECEIVED
JUL 24 1972

Page: 6 of 10
 Subject: *Arts & Culture*
 Title: *My Country*

Author <i>J. M. Huber Corp</i>		Locs <i>Western USA</i>		Well No <i>Western #1</i>	
Section <i>G</i>	Range <i>14</i>	Township <i>26 S</i>	State <i>24 E</i>	County <i>EDDY, New Mexico</i>	
Actual Footage Location: <i>19.60</i>					
Direction <i>North</i>		Line and <i>2043.36'</i>		East	
Ground Elevation <i>3827.0</i>		Estimated Elevation <i>Morrow</i>		Station <i>Washington</i>	
				320	

- ☐ Yes ☐ No If answer is "yes," type of consolidation

No allowable well be assigned to the well until all interests have been consolidated (by communitization, unitization, forced-pooling, or otherwise) or until a non-standard unit, eliminating such interests, has been approved by the Commission.



I hereby certify that the information con-
tained herein is true and complete to the
best of my knowledge and belief.

James R. Sutherland

James R. Sutherland

Position
District Prod. Supt.

Company
J.M. HUBER CORPORATION

Date: **July 17, 1972**

I hereby certify that the well location shown on this map was plotted from field notes of actual surveys made by me or under my supervision and that the same is true and correct to the best of my knowledge and belief.

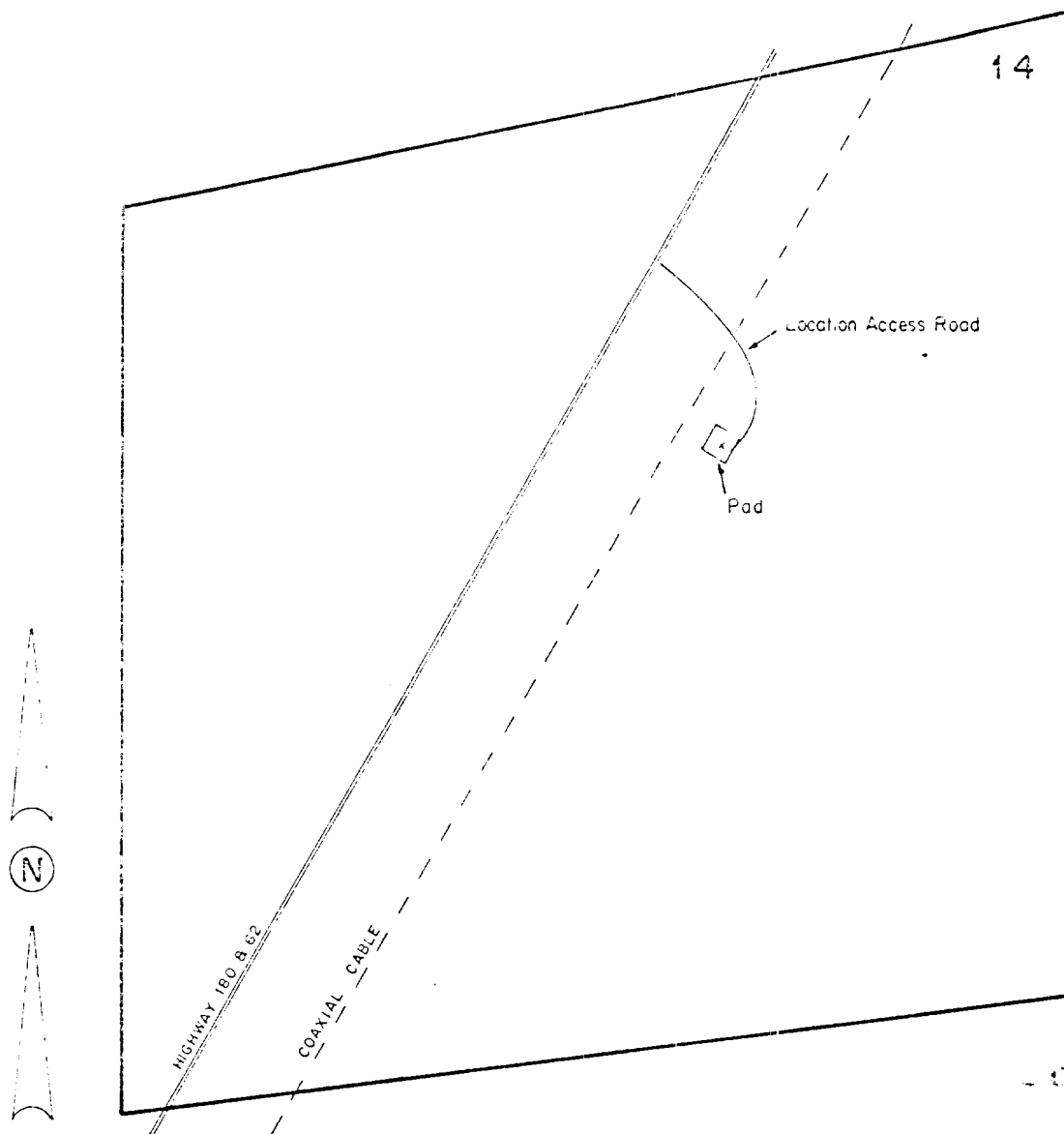
7-11-72

2 x 100 Subscribed
Charles L. Mason

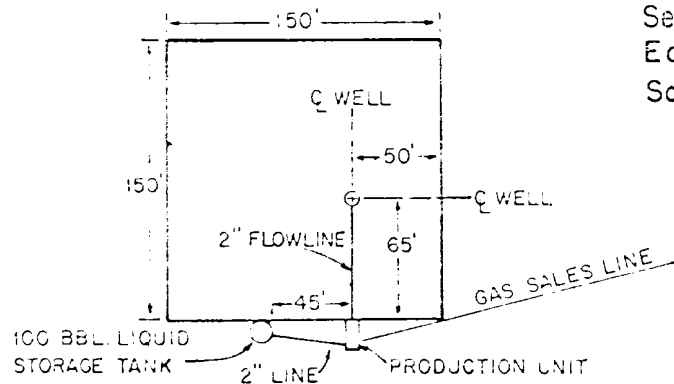
Registered Professional Engineer
and/or Land Surveyor

NM 3954

Copyright - 1997

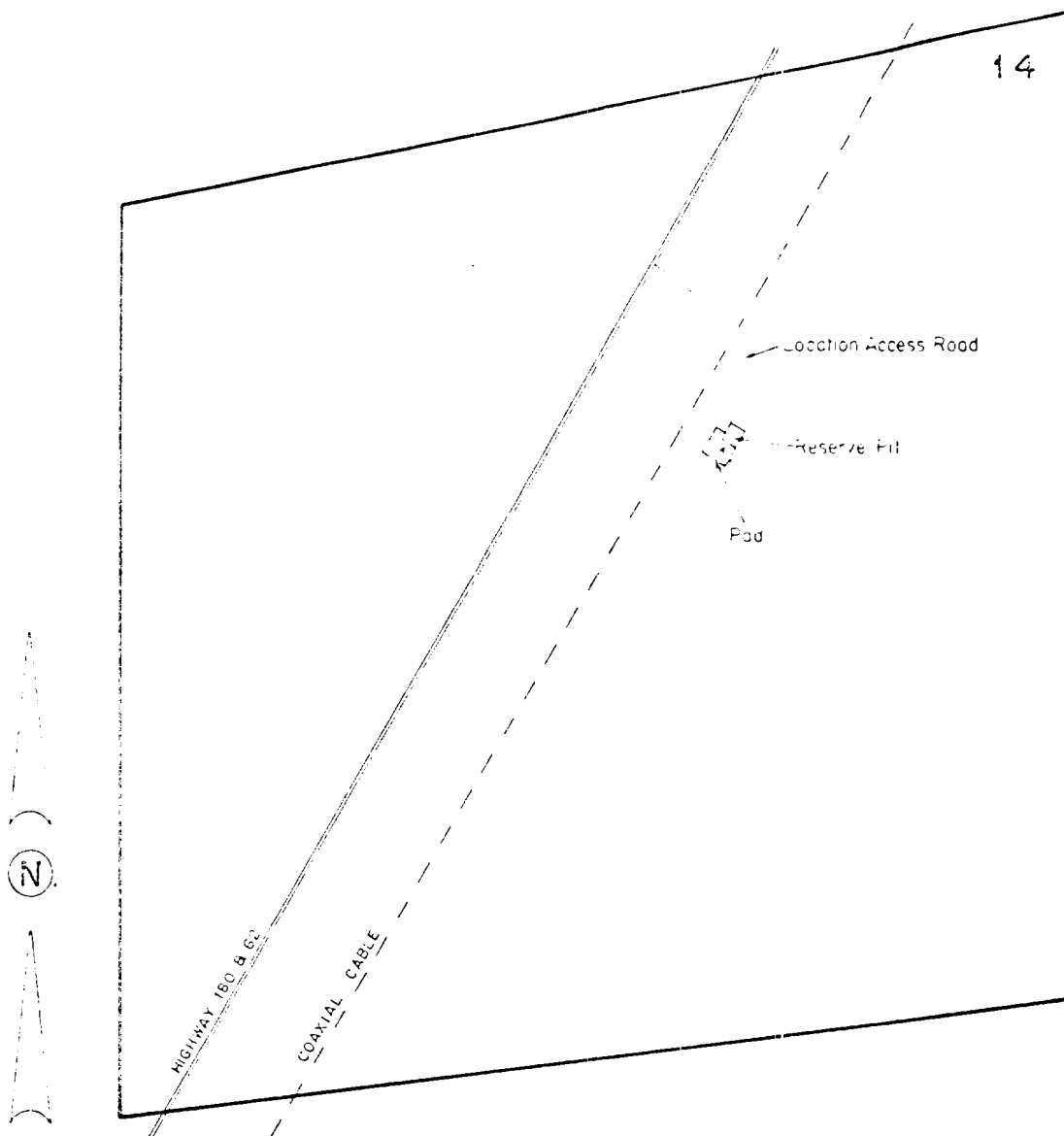


DETAIL of PRODUCTION FACILITIES
SCALE 1" = 100'

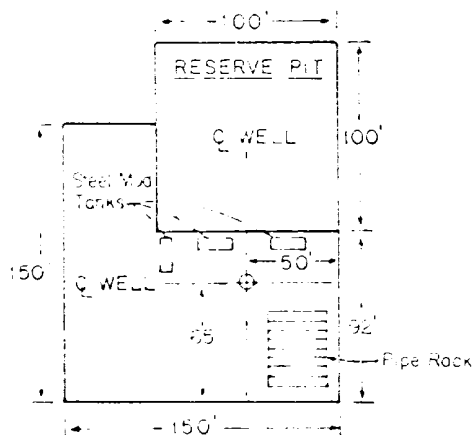


J.M. HUBER CORP. — *Western USA No. 1*
~~1980' FNL 8: 660' E from the N-S 1/4 line~~
 Sec. 14 T 26 S R 24 E
 Eddy County, New Mexico
 Scale: 1" = 1000'

RECEIVED
 JUL 24 1971
 U.S. GEOLOGICAL SURVEY
 ARTESIA, NEW MEXICO



DETAIL OF PAD & RIG LAYOUT
SCALE: 1" = 100'



J.M. HUBER CORP. — *Western USA No. 1*

1980' FNL & ~~660' E from the N-S 1/4 line~~ **2043 E**

Sec. 14 T 26 S R 24 E

Eddy County, New Mexico

Scale: 1" = 1000'

RECEIVED
JUL 21 1972
U. S. GEOLOGICAL SURVEY
ARTESIAN, NEW MEXICO

J.M. Huber Corporation

1900 Wilco Building

Midland, Texas 79701

July 17, 1972

OIL AND GAS
DIVISION

TELEPHONE
MUTUAL 2-7794

Mr. Jim Knauf, District Engineer
U.S.G.S.
Drawer U
Artesia, New Mexico 88210

Re: J.M. Huber Corporation
Western - USA No. 1
Approx. 1980' FN&EL
Section 14, T-26-S, R-24-E
Eddy County, New Mexico

Dear Mr. Knauf:

The following recommended mud program and B.O.P. program are presented for the above captioned well. We submit letter and detail of our proposed program as an attachment to our application to drill, Form 331-C.

Recommended Drilling Mud Program:

0' - 800' Spud with aquagel flocculated with lime. Use paper and cottonseed hulls for seepage loss of fluid or loss of circulation.

Surface Casing - 8-5/8' at 800'.

800' - 5500' Drill out surface casing with fresh water and circulate the reserve pit. Use paper for seepage loss of fluid. Maintain pH 10.5 with lime to help prevent corrosion to the drill string. Use Benex as a flocculant to prevent solids buildup.

5500' - 6800' Mud up with a non-dispersed aquagel, dextrid, drispac mud with the following properties: Viscosity 32-33, Weight 8.6 - 8.8, and WL 10 - 12.

6800' - 7800' Due to the sensitivity of the Morrow formation to contamination from drilling fluid filtrate, recommend lowering the WL to 2 - 3 before drilling the Morrow formation at approximately 7000'. Increase the viscosity to 36 - 38 while maintaining the mud weight 8.8 - 8.9.

JUL 24 1972
U.S. GEOLOGICAL SURVEY
ARTESIA, NEW MEXICO