

NEW MEXICO OIL CONSERVATION COMMISSION
WELL LOCATION AND ACREAGE DEDICATION PLAT

Form C-102
Supersedes C-128
Effective 1-1-65

All distances must be from the outer boundaries of the Section.

Mobil Oil Corporation			Lease Corral Draw Unit		Well No. 1
Section K	Section 14	Township 25-S	Range 29-E	County Eddy	
Actual Tract Location of Well:					
1980 feet from the South line and		1980 feet from the West line			
Original Elev. 3101	Producing Formation Morrow	Tract Corral Draw (Morrow)	Dedicated Acreage: 320 Acres		

1. Outline the acreage dedicated to the subject well by colored pencil or hatchure marks on the plat below.
2. If more than one lease is dedicated to the well, outline each and identify the ownership thereof (both as to working interest and royalty).
3. If more than one lease of different ownership is dedicated to the well, have the interests of all owners been consolidated by communitization, unitization, force-pooling, etc?

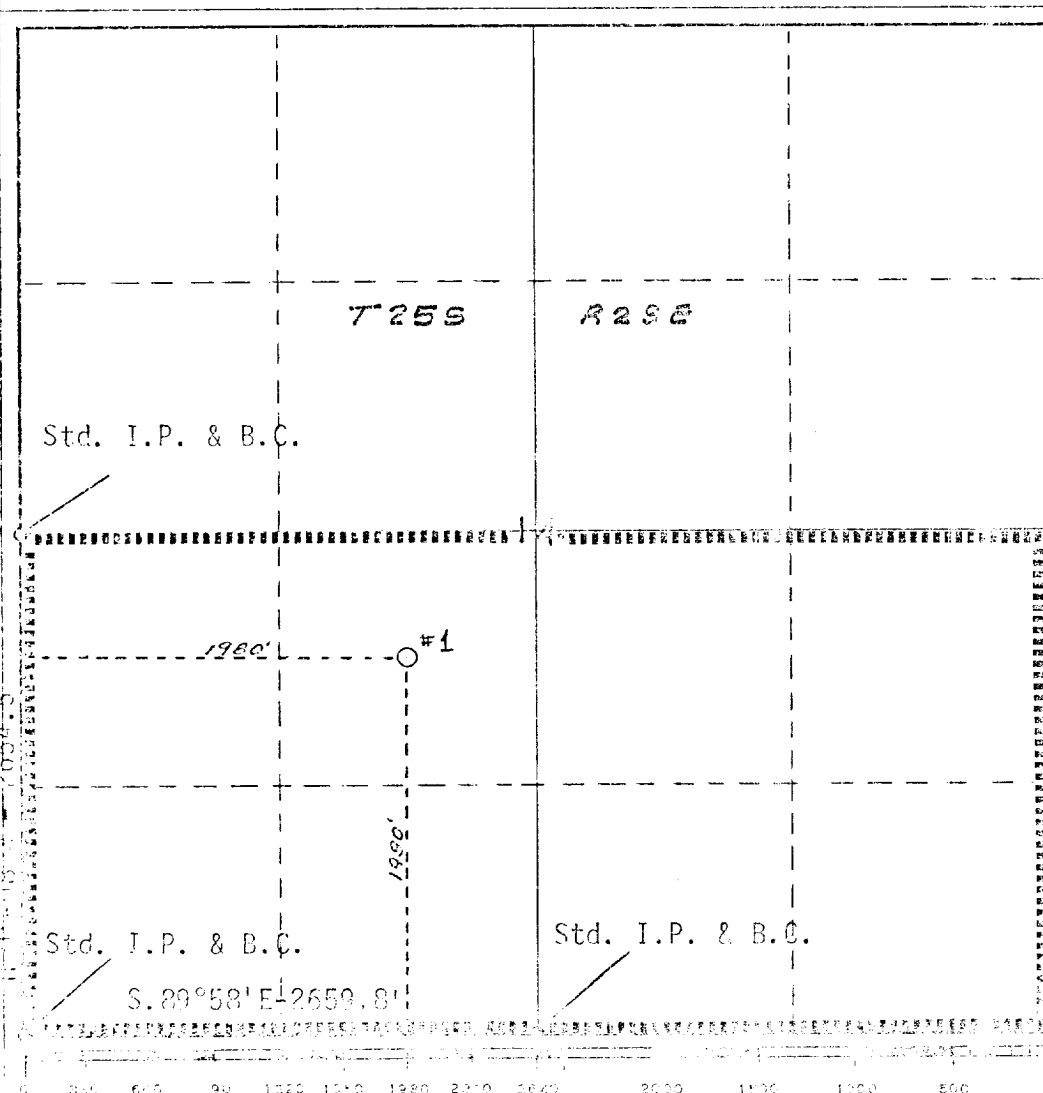
RECEIVED

SEP - 6 1974

☐ Yes ☐ No If answer is "yes," type of consolidation _____

If answer is "no," list the owners and tract descriptions which have actually been consolidated (Use reverse side of this form if necessary.) _____

No allowable will be assigned to the well until all interests have been consolidated (by communitization, unitization, forced-pooling, or otherwise) or until a non-standard unit, eliminating such interests, has been approved by the Commission.



CERTIFICATION	
I hereby certify that the information contained herein is true and complete to the best of my knowledge and belief.	
<i>A. D. Bond</i>	
Name	A. D. Bond
Position	Proration Staff Assistant
Company	Mobil Oil Corporation
Date	September 5, 1974
I hereby certify that the well location shown on this plat was plotted from field notes of actual surveys made by me or under my supervision, and that the same is true and correct to the best of my knowledge and belief.	
Date Surveyed	December 3, 1973
Registered Professional Engineer and/or Land Surveyor	
Harvey A. Carson, Jr.	
Certificate No.	5063